

WHITENING

Opalescence™ Endo Whitening

Back to **bright**

- 35% hydrogen peroxide
- Specifically formulated to whiten endodontically-treated, discoloured, non-vital teeth
- Designed for the “walking bleach” technique
- Convenient, premixed syringe delivery



Before

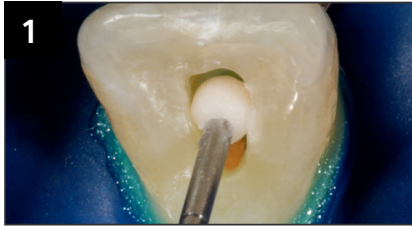


After

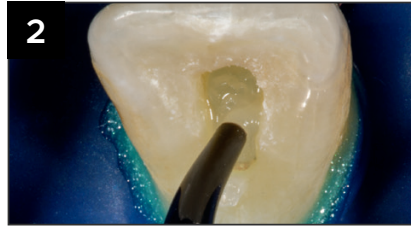
Courtesy of Dr. Rich Tuttle.



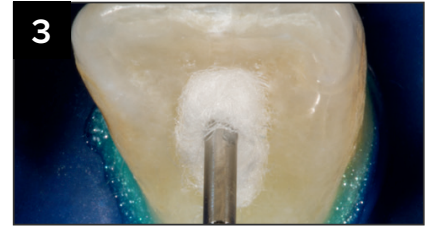
Non-Vital "Walking Bleach"



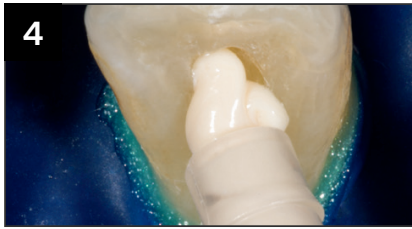
1 Completely remove all the restorative and root sealing material from the coronal pulp chamber and 2-3 mm below healthy gingiva. Place a 2 mm thick conventional glass ionomer or a resin modified glass ionomer to seal the endodontically treated canal. Verify set of material before proceeding.



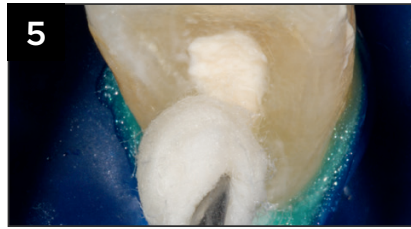
2 Apply a layer of Opalescence Endo whitening gel to the chamber.



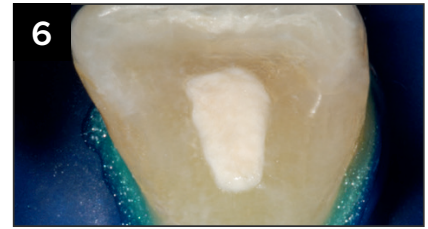
3 Insert a cotton pellet into the chamber.



4 Place mixed UltraTemp™ Regular filling material directly to site.



5 Wipe away excess with a wet cotton ball or gauze before it sets.



6 Finished. Repeat every 1-5 days until desired results are achieved.

Courtesy of Dr. Carlos Ramos



OPALESCENCE ENDO MINI KIT
2 x 1.2 mL Opalescence Endo Syringes
20 x Black Mini Tips

701270