

# Evanescence™

## Nano-Enhanced Universal Restorative



### For Restorations That Disappear

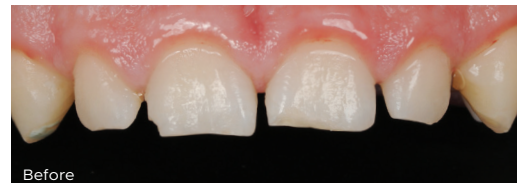
Evanescence™ Nano-Enhanced Universal Restorative from Clinician's Choice® is designed for both simple and complex cases. To Evanescence means to disappear gradually; vanish; fade away. True to its name, Evanescence composite blends effortlessly with natural dentition. Formulated with a proprietary process to optimize the refractive index of its unique nano pigments and fillers, you'll be amazed with its polishability and its ability to disappear or what we call its "Evanescence effect". Truly amazing esthetics can be easily achieved with Evanescence and its simple technique often requires only a single shade or, in more complex cases, fewer layers of composite.

### Exceptional Handling

Beyond beautiful esthetics, Evanescence exhibits putty-like handling. With the assistance of rheological modifiers, Evanescence adapts during placement and manipulation, yet is absolutely slump-free when you take your instrument or brush away, holding its form until you polymerize. Now you can build the most detailed anatomy or place the thinnest layers, for an infinity edge, with ease.

### Evanescence UX

When a lower viscosity is required, try Evanescence UX. Whether it's personal preference or the need to optimize adaptation in certain clinical cases, such as very conservative cavity preparations, Evanescence provides the clinician with added versatility. With an 85% universal/body opacity, UX shades can be used for single shade restorations or combined with other Evanescence opacities and Enamel EX shades for multi-layer cases. Evanescence UX is available in the most popular shades including A1, A2, A3, A3.5, B1, C2, and BL1.

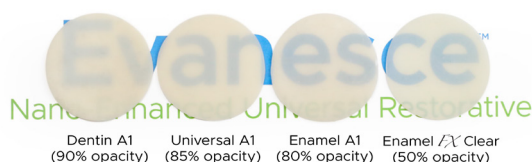


Dentistry and photography courtesy of Marcos Vargas, BDB, DDS, MS

### A Complete Restorative System

Truly a universal composite for both anterior and posterior cases, Evanescence is strong, has low shrinkage, and packs beautifully into Class I and II preparations. Evanescence is available in 30 VITA shades in three opacities options: Enamel (80%), Universal (85%) and Dentin (90%).

To further enhance esthetic enamel characterization, we've developed three non-VITA "Enamel EX" shades: Enamel White, Enamel Incisal, and Enamel Clear.



### Evanescence EX Enamel White

- 70% opacity
- Reinforced microfill
- Used to create lingual shelf and small incisal defects
- Available in 0.25g single dose or 3g syringe



### Evanescence EX Enamel Incisal

- 60% opacity
- Nano-hybrid
- Incisal placement
- Available in 0.25g single dose or 4g syringe



### Evanescence EX Enamel Clear

- 50% opacity
- Reinforced microfill
- Enhance facial lobes
- Thin clear coat
- Available in 0.25g single dose or 3g syringe



### Evanescence Shades & Opacities

UNIVERSAL SHADES (85% Opacity)												
A1	A2	A3	A3.5	A4*	B0.5*	B1	B2	C1*	C2	C3*	BL1*	BL3*
UX SHADES** (85% Opacity)												
A1UX*	A2UX*	A3UX*	A3.5UX*	B1UX*	C2UX*	BL1UX*						
DENTIN SHADES (90% Opacity)												
A1	A2	A3	A3.5	B1	C2	C4*						
ENAMEL SHADES (80% Opacity)												
A1	A2	A3	A3.5	B0.5*	B1	B2*	C2					
ENAMEL EX SHADES												
ENAMEL Incisal				ENAMEL White				ENAMEL Clear				

\*Available in single dose only

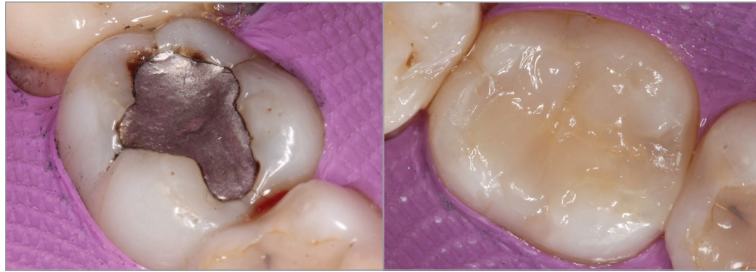
\*\*UX indicates a slightly lower viscosity



“A composite whose optical ‘chameleon’ properties allow it to blend seamlessly with the tooth. Evanescence makes all anterior composite restorations easier to match existing tooth color.”

— Robert Lowe, DDS

Posterior Class I *Dentistry and photography courtesy of Daniele Larose, DDS, AAACD*



Evanescence packs beautifully into Class I and II preparations when compared to other composites—especially bulk-fill materials. Superior non-slump handling allows you to create occlusal grooves and ridges; minimizing finishing time.

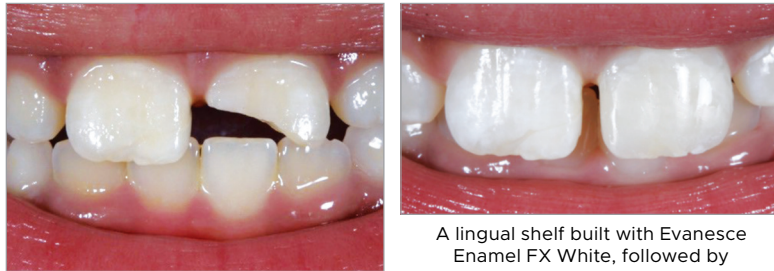
Match to Porcelain *Dentistry and photography courtesy of Daniele Larose, DDS, AAACD*



Matching composite material to porcelain is a common clinical challenge. The Evanescence range of opacities and outstanding polishability make porcelain matching cases significantly easier. Evanescence is a truly universal restorative system.

Multi-Shade Emergency Anterior Case

*Dentistry and photography courtesy of Bob Margeas, DDS*



Active adolescent presents with a second Class IV fracture.

A lingual shelf built with Evanescence Enamel FX White, followed by Evanescence A2 Dentin, opaquers, and then overlaid with Evanescence A1 Enamel. (Immediately post-op: shown before tooth re-hydration.)

Scan to watch  
 "Building Incisal Translucency in Anterior Restorations," with David Chan, DDS, AAACD



<p><b>TRUE™ DENTAL DAM - LATEX (BLUE)</b>                  5" x 5" 52-pack (838252)                  6" x 6" 36-pack (838236)</p>	<p><b>NEW</b></p>	<p><b>EVANESCE SINGLE DOSE 10PK</b>                  Contains: 10 x 0.25g single dose, instructions/SDS</p> <p>A4 Universal (322505)                  B2 Universal (322507)                  C1 Universal (322508)                  C3 Universal (322510)                  BL1 Universal (322511)                  BL3 Universal (322513)                  B0.5 Universal (322536)                  A1 Enamel (322514)                  A2 Enamel (322515)                  A3 Enamel (322516)                  A3.5 Enamel (322517)                  B0.5 Enamel (322537)                  B1 Enamel (322518)                  B2 Enamel (322519)                  A1 Dentin (322520)                  A2 Dentin (322521)                  A3 Dentin (322522)                  A3.5 Dentin (322523)                  B1 Dentin (322524)                  C2 Dentin (322525)                  C4 Dentin (322526)                  Enamel FX White (322534)                  Enamel FX Incisal (322535)                  Enamel FX Clear (322533)</p>	<p><b>EVANESCE SINGLE DOSE 20PK</b>                  Contains: 20 x 0.25g single dose, instructions/SDS</p> <p>A1 Universal (322501)                  A2 Universal (322502)                  A3 Universal (322503)                  A3.5 Universal (322504)                  B1 Universal (322506)                  B2 Universal (322507)                  C2 Universal (322506)                  A1 Enamel (321507)                  A2 Enamel (321508)                  A3 Enamel (321509)                  A3.5 Enamel (321510)                  B1 Enamel (321511)                  C2 Enamel (321512)                  A1 Dentin (321516)                  A2 Dentin (321517)                  A3 Dentin (321518)                  A3.5 Dentin (321519)                  B1 Dentin (321520)                  C2 Dentin (321521)                  Enamel FX Incisal (321515)                  Enamel FX White (321514)                  Enamel FX Clear (321513)</p> <p><i>*UX indicates a slightly lower viscosity</i></p>	<p><b>EVANESCE 4g SYRINGES</b>                  Contains: 1 x 4g syringe, instructions/SDS</p> <p>A1 Universal (321501)                  A2 Universal (321502)                  A3 Universal (321503)                  A3.5 Universal (321504)                  B1 Universal (321505)                  B2 Universal (321522)                  C2 Universal (321506)                  A1 Enamel (321507)                  A2 Enamel (321508)                  A3 Enamel (321509)                  A3.5 Enamel (321510)                  B1 Enamel (321511)                  C2 Enamel (321512)                  A1 Dentin (321516)                  A2 Dentin (321517)                  A3 Dentin (321518)                  A3.5 Dentin (321519)                  B1 Dentin (321520)                  C2 Dentin (321521)                  Enamel FX Incisal (321515)                  Enamel FX White (321514)                  Enamel FX Clear (321513)</p>
<p><b>TRUE™ DENTAL DAM - LATEX FREE (PURPLE)</b>                  5" x 5" 50-pack (838200)                  6" x 6" 50-pack (838201)</p>	<p><b>NEW</b></p>			
<p><b>RESINBLEND LV COMPOSITE BLENDING RESIN (151201)</b>                  1 x 3mL ResinBlend LV, instructions/SDS.</p>				
<p><b>EVANESCE SYRINGE TRIAL KIT (325901)</b>                  Contains: 5 x 4g syringes in Universal shades:                  A1, A2, A3, A3.5, B1, instructions/SDS</p>				
<p><b>EVANESCE SINGLE DOSE TRIAL KIT (325902)</b>                  Contains: 5 x 0.25g single dose 10-packs in Universal shades:                  A1, A2, A3, A3.5, B1, instructions/SDS</p>				



# ResinBlend LV

Composite Blending Resin

Blending, adapting, shaping and contouring of composite prior to light-curing, all leads to decreased finishing time and a more esthetic composite restoration. Utilizing a composite lubricant can make this task more efficient and predictable. ResinBlend LV is a low viscosity, unfilled resin wetting agent which enables enhanced manipulation of all composites without altering their physical or optical properties.

- Eliminates composite pull back, stickiness
- Adds no thickness or composite seams/layers to the final restoration
- Is unfilled and Hema-free so that the original shade of the composite will not be compromised over time.
- Compatible with all composites