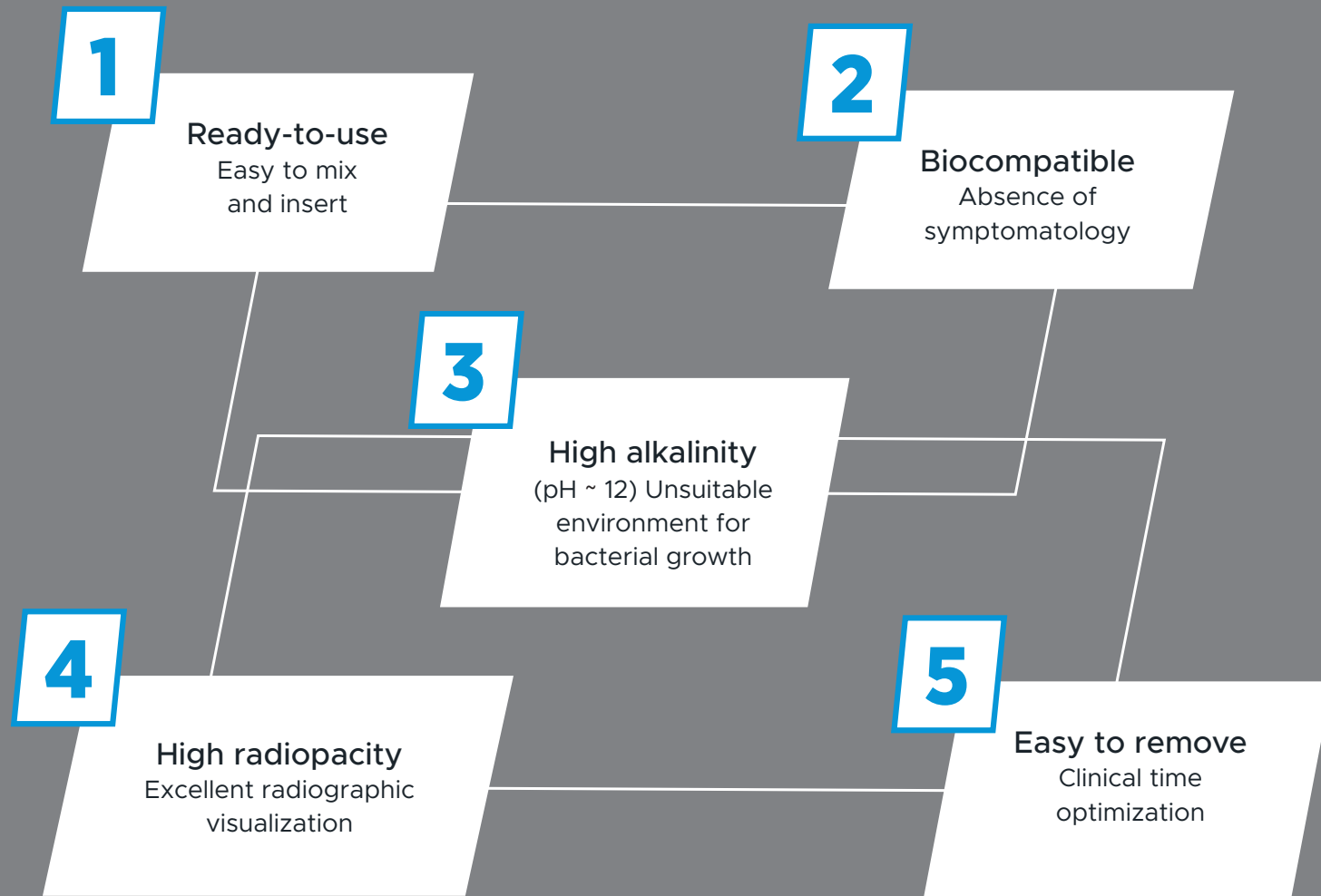


5

Reasons to use BIO-C® TEMP



BIO-C TEMP PASTE 850812
4-Pack x 0.5g syringes with 20 tips

ENDODONTICS

BIO-C® TEMP

Ready-to-use bioceramic paste for intracanal dressing.



Indications

- Intracanal dressing for endodontic treatment of teeth with pulp necrosis and retreatment.
- Intracanal dressing for cases of perforations, external and internal resorptions, prior to the use of BIO-C® REPAIR, MTA REPAIR HP and MTA ANGELUS®.
- Incomplete rhizogenesis.

Definition

BIO-C® TEMP is a ready-to-use bioceramic paste for intracanal dressing. It has a great advantage in relation to calcium hydroxide pastes because it presents **low solubility** and in this way allows the product to be in contact with the canal walls for a long period of time. As a result, a **high release of hydroxyl (OH-) ions** is obtained continuously and gradually. Available in a syringe with silicone cap and applicator tips specially developed for the product. The silicone cap effectively protects the product from external environment moisture, preventing premature hardening. The applicator tips are pre-curved and with adequate length, which facilitates the application in areas of difficult access.



Ready-to-use



Biocompatible
High alkalinity



High radiopacity
Easy to remove

Composition

COMPONENT	FUNCTION
Tricalcium Silicate	Active components Release of Calcium and Hydroxyl ions
Dicalcium Silicate	
Tricalcium Aluminate	
Calcium Oxide	
Base Resin	Plasticity
Calcium Tungstate	Radiopacity
Polyethylene Glycol	Dispersing agent
Titanium	Pigmentation

Key Features and Benefits

pH

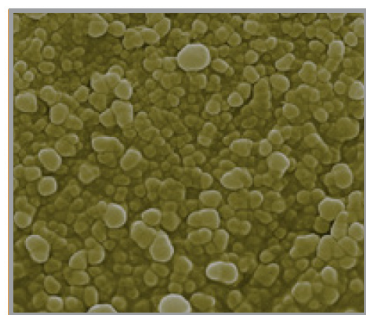
The main components of BIO-C® TEMP are Calcium Silicates, which after hydrated produce Calcium Hydroxide that dissociates into Ca²⁺ and OH⁻. The released hydroxyl ions (OH⁻) are responsible for a significant increase in the pH of the surrounding tissue, making the environment unsuitable for bacterial growth.

Release of Ca²⁺ ions

The release of Ca²⁺ ions is key for the biological and chemical action of an intracanal dressing. BIO-C® TEMP presents a constant release of Ca²⁺ ions to the tissues being biocompatible, causing no irritation or painful symptomatology.

Particle Size

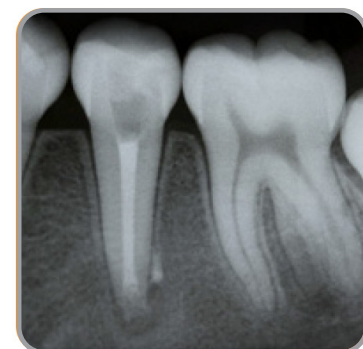
Its particle size ($\leq 2 \mu\text{m}$) gives BIO-C® TEMP a better flow and penetration into the accessory canals and dentinal tubules, in addition to a higher product reactivity, which favors the faster release of Ca²⁺ ions and OH⁻ ions



Images courtesy of Dr. Celson Klein.

Radiopacity

BIO-C® TEMP has high radiopacity ($\geq 9 \text{ mm}$ in the Aluminum step-wedge), providing a radiographic visualization of excellence.



Images courtesy of Dr. Maria Antonieta Veloso Carvalho de Oliveira.

NO STAINING
The radiopacifier used in BIO-C® TEMP does not cause staining in the dental structure (Calcium Tungstate)

Technical Data

pH	~ 12
Radiopacity	9 mm Al
Particles Size	$\leq 2 \mu\text{m}$
Flow	$23.85 \pm 0.33 \text{ mm}$
Rheometry	$11.0 \pm 2.0 \text{ Pa.s}$
Solubility	$0.15 \pm 0.05\%$



Clinical Case

Courtesy of Dr. Maria Antonieta Veloso Carvalho de Oliveira.



Initial radiograph



BIO-C® TEMP application



Filling with BIO-C® TEMP



Radiographic appearance immediately after canal obturation



6 months follow-up

Testimonial

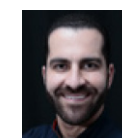
“Bioceramics are ceramic materials used in medicine and dentistry due to their biocompatibility and ability to create an ideal healing environment. BIO-C® TEMP is Endodontics’ first intracanal bioceramic medication, indicated for cases of treatment and retreatment due to its high pH, its anti-bacterial, bacteriostatic and anti-inflammatory action and mineralization induction. Because it is a bioactive product, BIO-C® TEMP interacts with the surrounding tissue, stimulating healing, and the tissue system responds to the material as if it were a natural tissue. We use BIO-C® TEMP in the most diverse cases: pulpitis, pulp necrosis, periapical lesion, persistent fistula, inflammatory or purulent exudate, perforation, apexification, external and internal resorption. We recommend BIO-C® TEMP not only for its actions, but also because it is a ready-to-use product, easy to insert into the root canal and with no painful symptomatology even in cases where it extrudes through the apical foramen.”



Maria Antonieta Veloso



Paulo Vinicius Soares



Luis Henrique Raposo

Staff of the Faculty of Dentistry of the Federal University of Uberlândia (FOUFU)
 Maria Antonieta Veloso Carvalho de Oliveira - PhD Professor of the Endodontics Area of the Faculty of Dentistry from the Federal University of Uberlândia (FOUFU) - MG.
 Luis Henrique Araújo Raposo - PhD Professor of the Occlusion and Fixed Prosthodontics Department of the Faculty of Dentistry of the Federal University of Uberlândia (FOUFU) - MG.
 Paulo Vinicius Soares - PhD Professor of the Dentistry and Dental Materials Department, from the Faculty of Dentistry of the Federal University of Uberlândia (FOUFU) - MG.

Easy removal

BIO-C® TEMP has been developed with a formulation that in addition to not setting it is easy to remove.



Scan for more

1-800-265-3444 | CLINICALRESEARCHDENTAL.COM

CRD[®]