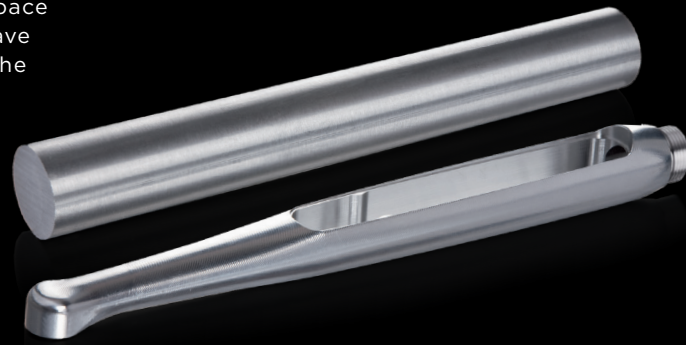
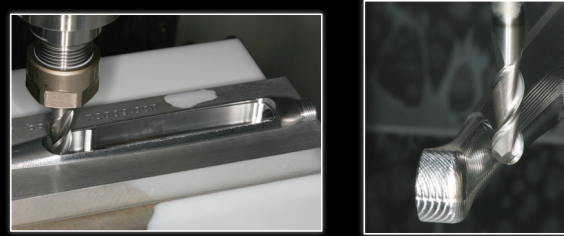


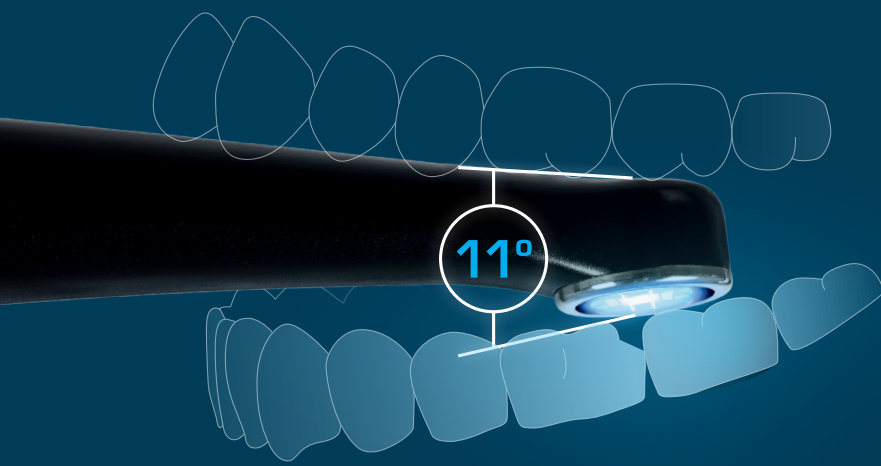
ENGINEERED FOR DURABILITY

All VALO curing lights are created from solid bars of high-grade aerospace aluminum, making any VALO light virtually indestructible. You won't have to worry about accidentally knocking it off of the tray onto the floor—the VALO curing light can handle it.



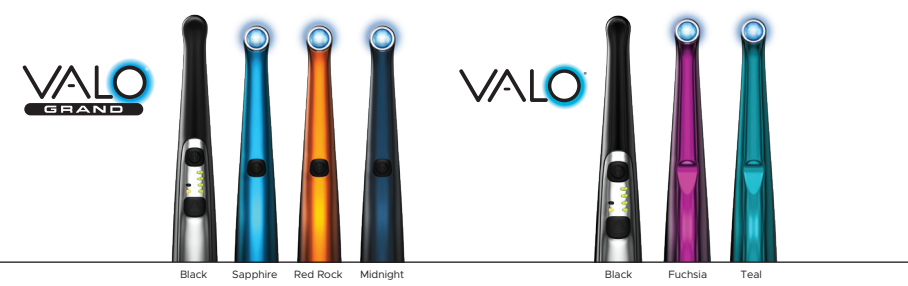
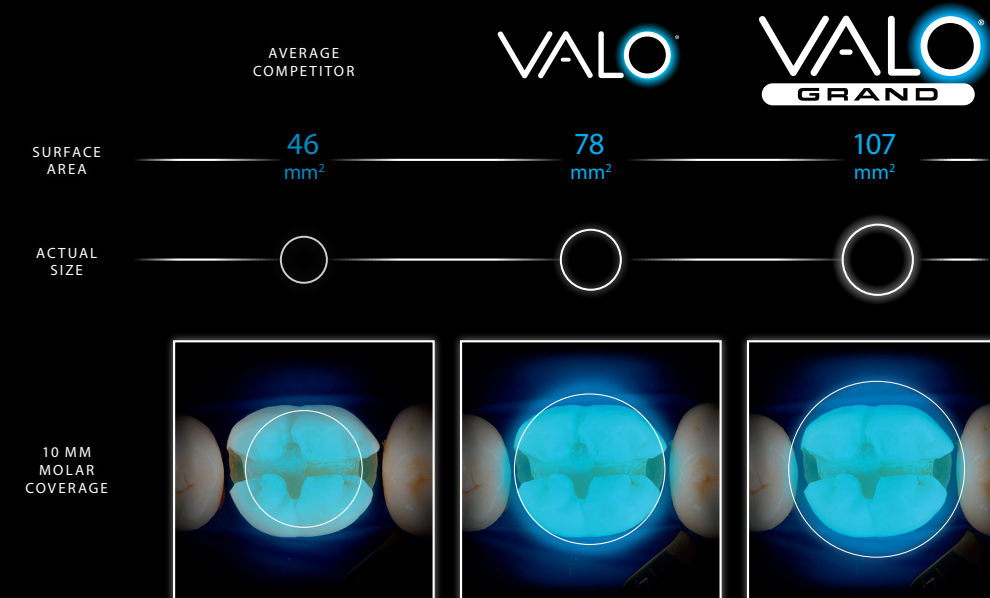
UNMATCHED ACCESSIBILITY

Properly positioning a curing light can be difficult when the restoration is located in the back of the mouth. A patient can only open their mouth so wide, and if you can't get the light over the restoration, you face either having a poor cure or making the patient uncomfortable. The VALO curing light is designed with a low-profile head and elegant, ergonomic, streamlined design to allow for easy direct access to all areas of the patient's mouth.



VALO GRAND

When it comes to curing, the circumstances aren't always ideal. Squirming patients, sectional bands blocking the light from getting to the entire restoration, or even a simple hand movement can prevent a complete cure. That's where the VALO Grand curing light comes in. The VALO Grand light has a large 12 mm lens that allows you to cover more area in a single cure. With the VALO Grand light, you won't miss a thing.



VALO

VALO CORDED CURING LIGHT

- 1 x Black VALO LED curing light - 7' cord
- 1 x Power supply with universal plugs - 6' cord
- 1 x Handpiece bracket holder
- 1 x Blue light blocking light shield
- 1 x Sample pack barrier sleeves

725919



- VALO POWER SUPPLY 6' CORD
- VALO POWER SUPPLY 16' CORD
- VALO BARRIER SLEEVE 100 PK
- VALO LIGHT SHIELD 1 PK
- VALO MOUNTING BRACKET

725930
725933
725931
725935
721667

VALO GRAND CORDLESS

VALO GRAND KIT

- 1 x VALO Grand Cordless LED curing light
- 4 x Batteries (rechargeable)
- 1 x Battery charger
- 1 x Power supply with universal plugs for battery charger
- 1 x VALO Grand light shield
- 1 x Handpiece bracket holder
- 1 x Sample pack Barrier sleeves

725972
725975
725976
725977

CHARGING UNIT POWER SUPPLY

725961

BATTERY CHARGING UNIT

725962

RECHARGEABLE BATTERIES 2PK

725963

VALO GRAND BARRIER SLEEVE 100PK

725974

VALO GRAND MOUNTING BRACKET

721667

VALO GRAND LIGHT SHIELD 1PK



VALO CORDLESS

VALO CORDLESS KIT

- 1 x VALO Cordless LED curing light
- 4 x Batteries (rechargeable)
- 1 x Battery charger
- 1 x Power supply with universal plugs for battery charger
- 1 x Blue light blocking light shield
- 1 x Handpiece bracket holder
- 1 x Sample pack barrier sleeves

BLACK
FUCHSIA
TEAL

725941
725945
725946



- VALO CORDLESS BARRIER SLEEVES 100PK
- VALO CORDLESS LIGHT SHIELD
- VALO MOUNTING BRACKET

725947
725929
721667

CHARGING UNIT POWER SUPPLY

725961

BATTERY CHARGING UNIT

725962

RECHARGEABLE BATTERIES 2PK

725963



VALO LENSES (NOT YET AVAILABLE FOR VALO GRAND)

The great versatility of the VALO curing light is also due to the functional accessories. Additional lenses allow for specific curing in dedicated areas, thus increasing the scope of use. The magnetic lenses are simply applied to the head of the VALO light.

The lenses can be disinfected with a surface sanitizer (do not autoclave).

- BLACK LIGHT LENS
- POINTCURE LENS 2PK
- PROXICURE BALL LENSES 2PK
- TRANSLUME LENSES 2PK

725939
725934
725936
725937



EQUIPMENT



ELEGANTLY POWERFUL





RED ROCK

SAPPHIRE

MIDNIGHT

BLACK

VALO Grand comes in 4 colours

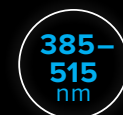
THE REVOLUTIONARY, AWARD-WINNING VALO™ CURING LIGHT, ECLIPSING THE COMPETITION.

AVAILABLE ON ALL VALO CURING LIGHTS



UNPARALLELED POWER

Ultra-high-energy broadband LEDs produce a high-intensity light with an irradiance of 800-2300 mW/cm²



MULTIPLE WAVELENGTHS

Custom LEDs in three wavelengths polymerize all light-cured dental materials



DURABLE UNIBODY CONSTRUCTION

A bar of tempered, high-grade aerospace aluminum is CNC precision milled to create an extremely durable, lightweight handpiece



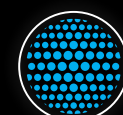
ACCESSIBILITY

The 11 mm head height allows easy and direct access to all curing sites



COLLATED BEAM

Optimally collimated beam delivers consistent, uniform power



MORE UNIFORM CURE

Unique glass lens system forms the collimated blended beam to give an even cure



AWARD-WINNING

The VALO family has won multiple Reality 5 Star Awards, Townie Choice Awards, and Pride Institute "Best of Class" Technology Awards, and has been named one of Dentistry Today's Top 50 Technology Products multiple times

EXCLUSIVE TO THE VALO GRAND LIGHT



LARGER TIP DIAMETER

The VALO Grand light has a 12 mm diameter lens, capable of covering 107 mm²



ADDITIONAL CURING BUTTON

Curing button on the underside facilitates intuitive operation

VALO™

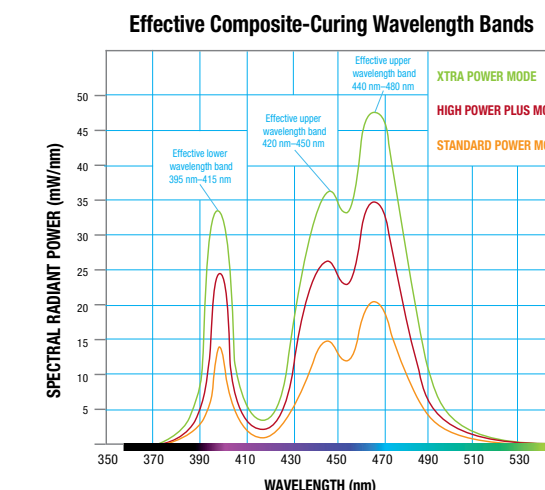
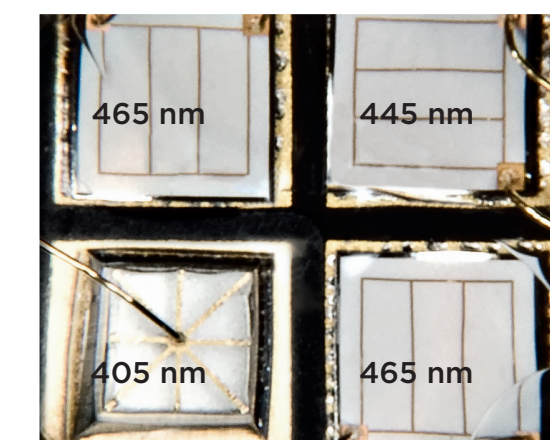
BROADBAND LED CURING LIGHT

ACCESSIBILITY. DURABILITY. POWER.



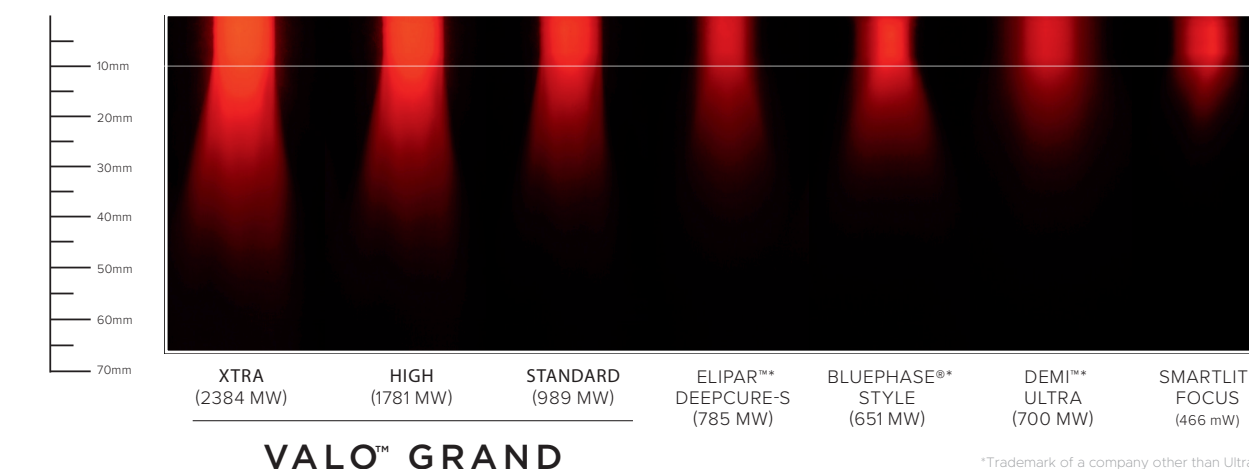
POWERFUL BROAD-SPECTRUM CURING

A lot of curing lights only have a single LED chip that operates on one wavelength. This can create hot and cold spots in the beam, which makes uniform curing nearly impossible. The original VALO curing light was created to answer that problem. With four powerful LEDs that deliver a uniform light over a broad spectrum, you know that you are getting a powerful, uniform cure that will last. The VALO Grand curing light has that same uniform power you expect, plus a larger lens.



All VALO LED curing lights use a custom, multiwavelength light-emitting diode (LED) for producing high-intensity light at 385-515 nm, which is capable of polymerizing all light-cured dental materials. Every member of the VALO curing light family also offers three curing modes to accommodate your preferences.

CURING DEPTH COMPARISON



AWARD-WINNING

The VALO curing light was first recognized by Reality in 2010 with the Five Star Reality's Choice Award for LED curing lights. It has earned the award for nine consecutive years (2010-2018) and has stayed ranked #1. In addition, the VALO has been recognized numerous times as a Top 50 Product by Dentistry Today, and as a Dental Town Dental Townie award recipient.

