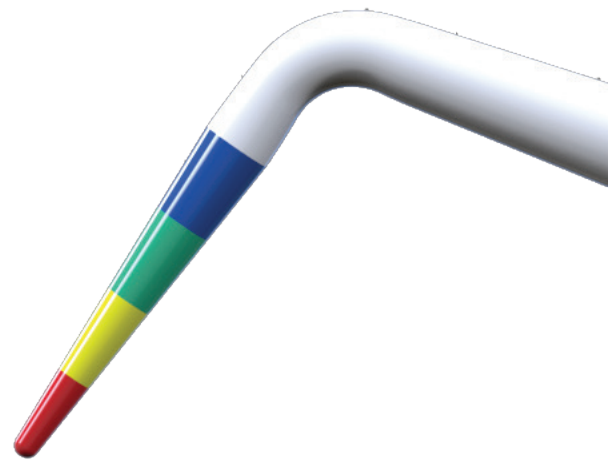


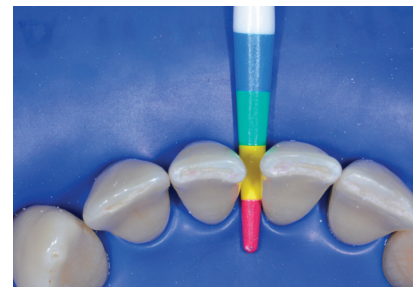
BT MATRIX



Black Triangle Matrix

The Bioclear Black Triangle System enables black triangle closure up to 40% faster* than with the original Bioclear matrices. Black Triangle matrices are custom designed for black triangle treatment and require no trimming prior to seating. A colour-coded gauge and matrices make choosing the correct curvature for gingival embrasure closure simple and predictable. Curvature is indicated by colours at the top of the matrix and correspond with a gauge that, when inserted into the black triangle, indicates which curvature to use. The matrices come in two sizes (large incisor and small incisor) and four curvatures allowing you to treat the entire anterior sextant, canine to canine and both upper and lower arches with strong aesthetically pleasing results.

- 40% faster* closure of black triangles
- Delivers Bioclear's consistently strong and aesthetically pleasing results
- Custom designed only for black triangle treatment and require no trimming prior to seating
- Simple to place
- Colour-coded gauge and matrices make choosing the correct curvature simple and predictable
- Matrices come in two sizes (large incisor and small incisor) and four curvatures
- System treats the entire anterior sextant, canine to canine and both upper and lower arches
- Black Triangle Gauge is fully autoclavable



* Typical improvement for most Bioclear dentists



BLACK TRIANGLE INTRO KIT

208600

10 x Matrices of each colour in size small
10 x Matrices of each colour in size large
1 Black Triangle Gauge
Assorted set of True Contact
1 Bottle of Bioclear two tone disclosing solution