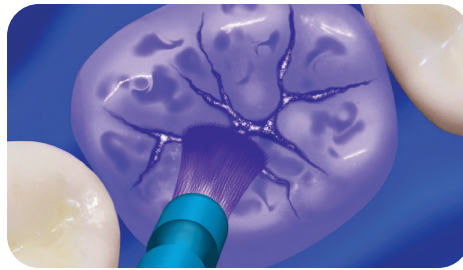




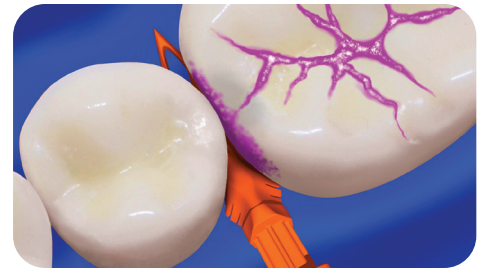
Class II Pre-Operative View

Rubber dam isolation is always preferred. Groom contacts with BioClear TruContact Sander before rubber dam placement to expedite process and avoid tearing the rubber dam.



Disclose the Tooth to Identify Biofilm

Place BioClear Dual Color Disclosing Solution with a disposable brush onto the **dried tooth**.



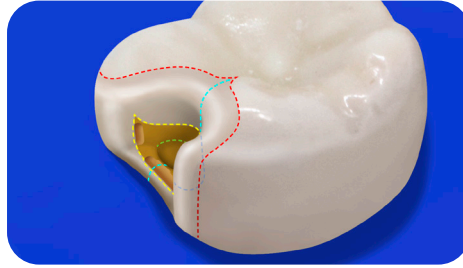
Pre-Wedge with Diamond Wedge

The wedge can be placed from buccal or lingual directions. If possible the wider end near the handle should be placed into the widest, deepest part of the embrasure.



Cavity Preparation and Beveling

The pre-wedge helps to protect the dam, soft tissue, and neighboring tooth. Bevel using Komet USA's fine trimming diamond FSD3F.FG.031 or fine grit finishing diamond 8833.FG.008.



Finished Cavity Preparation

For most cavities, no mechanical retention via box shape prep is needed when the proper BioClear Class II preparation is cut.



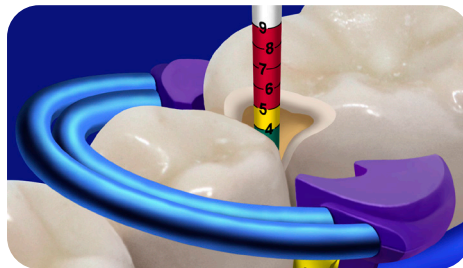
Run Sanding Strip Through Contact

The contact area must be lightly broken. It is much safer to use a Komet lightening strip instead of a bur in order to protect the neighboring tooth.



Blast Tooth Inside and Out

The blaster has 3 purposes, first to remove biofilm from the infinity edge area, second to remove the pellicle from enamel past the bevel, and third to cleanse the inside of the cavity.



Use EMHI to Determine Matrix Selection and Cure Depth

The numbers on the Evolve Matrix Height Indicator (EMHI) correspond with the numbers on the Evolve matrices to help determine matrix height selection. The colors on the EMHI indicate if the composite should be cured in one layer or two.



Place Evolve Matrix and Wedge

The Evolve Matrices are rugged and will withstand heavy seating pressure. Hold the "tab" against the neighboring tooth during pressure. To aid separation use the largest wedge that will fit in the embrasure. The tab should be centered as shown.



Place TwinRing

The TwinRing has four "hands" that will straddle the wedge. Rock the TwinRing apically, like a rubber dam clamp, to assure full seating.



Place Acid Etch

Make sure to inject acid etch all the way to the infinity edge area (the edge of the matrix). Etch for 15 seconds, rinse and dry.



Place and Massage Adhesive Into Dentin

Apply 3M™ Scotchbond™ Universal Plus Adhesive, with agitation, for 20 seconds. Do not cure.



Air Thin the Adhesive

Gently air dry 3M™ Scotchbond™ Universal Plus Adhesive for a minimum of 5 seconds and until there is no adhesive movement. Do not light cure.



Place Spot Welds of Flowable Composite

Place two "Spot Welds" of heated 3M™ Filtek™ Flowable Restorative composite, 1-2 mm in diameter, inside, over, and outside the corners of the matrix.

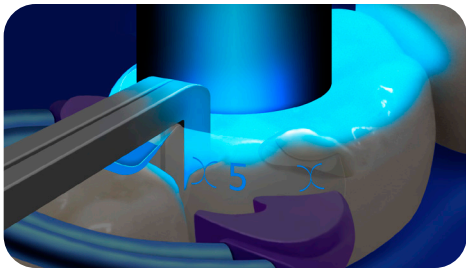


BIOCLEAR

Powered by 3M | Oral Care

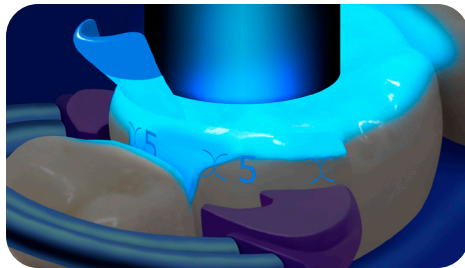
BIOCLEARMATRIX.COM

Refer to manufacturer instructions for use (IFU) for complete product information.



Place Push-Pull, Quick Light Cure

Place the Push-Pull Instrument inside of the cavity prep, with pressure mid coronal-apical, to approximate the matrix for a broad, tight contact. Hold the Push-Pull instrument and the matrix in place while your assistant light cures the "Spot Welds".



Cure Again After Removing Push-Pull

Light cure the adhesive for 10 seconds after the Push-Pull instrument has been removed.



2nd Application of Adhesive

Wet the cavity area and infinity edge areas with 3M™ Scotchbond™ Universal Plus Adhesive to act as a surfactant. This step allows good flow of composite in the next steps. Do not light-cure.



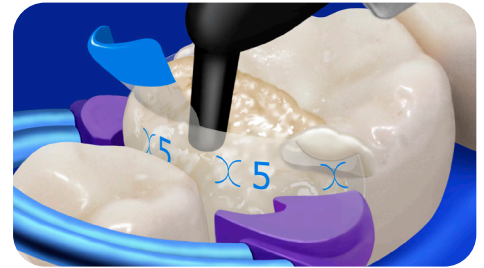
Air Thin the Adhesive

Gently air dry the 3M™ Scotchbond™ Universal Plus Adhesive for 5 seconds.



Inject Warmed Flowable Composite

Slowly inject the warm 3M™ Filtek™ Bulk Fill Flowable Restorative, at a 90° angle to the Tooth Restorative Interface (TRI), while displacing the adhesive/surfactant.



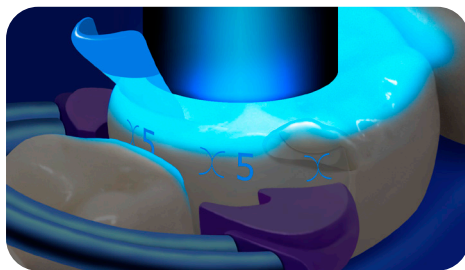
Inject Warmed Bulk Fill Paste Composite

Slowly inject the warm 3M™ Filtek™ One Bulk Fill Restorative at a 90° angle to the matrix tooth interface while displacing the flowable to ensure strong, seamless composite coverage.



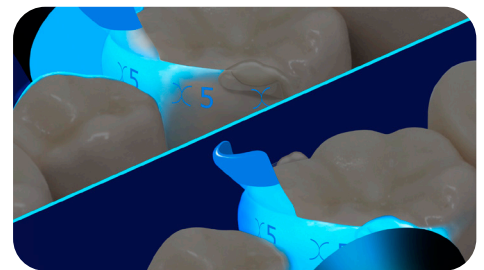
Quickly Shape the Composite

Massage the composite toward the cusp tips and place a central groove. Do not over-manipulate or marginate the composite. Leave the excess.



3-Point Curing: Step 1

Cure the occlusal surface of the 3M™ Filtek™ One Bulk Fill Restorative for 10 seconds.



3-Point Curing: Steps 2 and 3

After removing the TwinRing, cure the bulk fill, through the matrix, on the buccal and lingual surfaces.



Remove Wedge and Matrix

Remove the wedge, then release the matrix from around the tooth with an explorer. Once loosened, spin the matrix out with a hemostat.



Sculpt Restoration with Disc

Round the marginal ridge and marginate the restoration using a 3M™ Sof-Lex™ XT Coarse Disc. Keep disc out of deep interproximal areas in order to maintain the smooth mylar finish.



Grind Simple Anatomy

Use Komet USA's Q-Finisher carbide H379.FG.0180 to create simple fossa near the contact area and central grooves.



Occlusal Margination

A rubber abrasive point such as a "brownie" is used to marginate the occlusal infinity edge Tooth Restoration Interface (TRI).



Magic Mix Pre-Polish

Apply Bioclear Magic Mix in a disposable prophyl cup for further margination and pre-polish.



Rockstar Polish

Polish the tooth with the Bioclear RS Polisher. Use light pressure in the dry phase and then heavy pressure in the wet phase. Have your assistant blow a gentle air stream during the dry phase and constant, full air-water during the wet phase.