

Anterior Matrix Systems Essential to Provide Proper Anatomical Form and Function to Your Restorations

Garrison Dental has introduced the Fusion Anterior Matrix System. A simple matrix designed to be used for anterior restorations such as class III, IV as well as composite veneers. The firm stainless-steel matrix easily slides into the sulcus while maintaining the proper shape and contour without deformation. Properly placed the ideal anatomical curvature is achieved in a gingival - incisal and facial - lingual direction. To help maintain this ideal anatomical position the Fusion Anterior Wedge is used to ensure a firm seal at the cervical margin from facial to lingual. These radically curved wedges help free up your hands to allow one to concentrate on composite placement and simplify the restorative process.

A 74-year-old male presented with an old class III composite on the distal portion of his left lateral incisor (Figure 1). Re-current decay was noted both visually as well as radiographically. Treatment options were discussed with the patient and it was decided we would replace the restoration with a new direct composite restoration. Small amounts of composite were placed onto the tooth and light-cured to get an idea of what shade or shades would be utilized.



Figure 1: Ailing Class III composite on the distal - facial of the Maxillary lateral incisor



Figure 2: Fusion Matrix being held from the facial while placing composite from the lingual.



Figure 3: Removal of the matrix reveals proper contact, contours and minimal flash on the facial surface.



Figure 4: Final polished restoration with wonderful aesthetics and ideal anatomical form and function.

A short anterior Fusion Band (Garrison Dental) was placed interproximal past the finish line of the preparation and gently into the sulcus. A medium-sized anterior Fusion Wedge (Garrison Dental) with its radical curvature was placed to ensure a firm seal at the cervical margin all while not distorting the anatomical contour, unlike the mesial aspect of this same tooth where a wood wedge was used to seal the margin of that particular restoration (Figure 1). In this particular case, I took the approach of using my finger to push the matrix from the facial while adding a small increment of Majesty ES-2 Universal composite (Kuraray) from the lingual (Figure 2). The matrix was then peeled away on the facial side and again cured for 20 more seconds to ensure complete polymerization. Anterior Fusion Wedge and Matrix were then removed to show minimal excess composite on the facial surface as well as ideal anatomical contours (Figure 3). A fine flame diamond and a fine football-shaped diamond (Meisinger) did most of the heavy refinement and adjustment of occlusion. The final polish was achieved using a two-step diamond polishing system (Meisinger)(Figure 4).



Troy Schmedding DDS, AAACD 1993 honors graduate of the Arthur A. Dugoni School of Dentistry in San Francisco, California.

See what others are saying about Fusion Anteriors!

Just used the new ant matrix this week. I did a large distal cervical lesion on #27. band and wedges did the trick. I was not sure if I would like the metal matrix, but it was an improvement over a mylar matrix.

**Bruce Crispin DDS, MS
Tarzana, CA**

I have tried the anterior matrix system and I do like it. It is easy to place, and the wedge helps to eliminate excess at the cervical. It forms a nice anatomical form on the DL line angle. I am working on photos to include in my lecture. I believe that this is a very user-friendly system that works well for the masses. Congratulations!

*—Dr. Dan Ward
Columbus, OH*

Thanks for sending the matrix system to give it a spin. I have used it a couple of times with great success.

—Dr. Sam Simos

I received the (Anterior) kit and love it. Have already tried it and find it very easy to use. Definitely planning on using it on all my anterior interproximal restorative treatments.

—Dr. Simona Cuevas, DDS

Super simple to use! Love it! Getting the right contour has always been tedious and time consuming to get it done right. This is no longer an issue with the Fusion™ Anterior Matrix System. Saves me about 20 minutes per restoration.

*—Dr. Anthony Vocaturo DDS, AAACD, FIADFE, FACE, FAGD
Board Accredited Cosmetic Dentist
NJ Smile Center*

LOVE IT!! Saves time...about 1/2 hour per tooth. Easy to use. Perfect contacts. Perfect margins. No gingival flash. LIKE...WOW!!

**—Dr. Lance Kisby, DMD
Minocqua, WI**

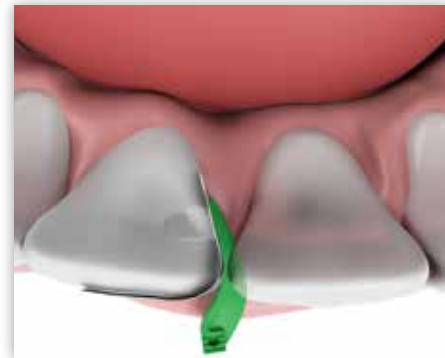
Garrison
Dental Solutions

Fusion™ Anterior Matrix System



**Introductory
Price
\$216**

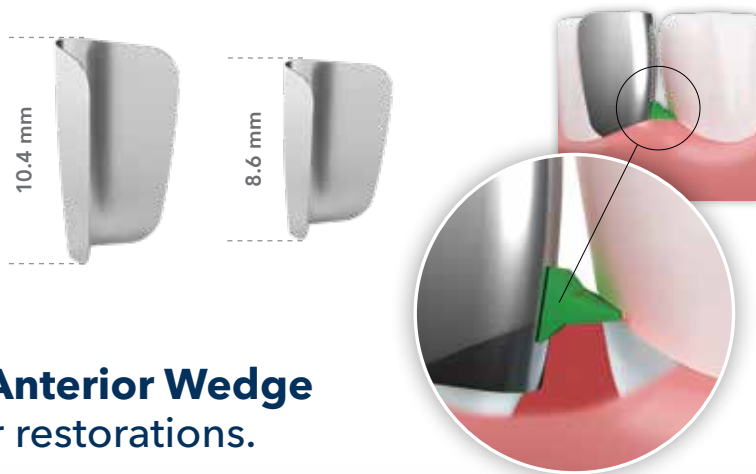
ANK01 Contains:
50 short bands
50 tall bands
25 extra small wedges
25 small wedges
25 medium wedges
25 large wedges



The **Fusion™ Anterior Matrix** contains a myriad of refinements to help you recreate ideal interproximal anatomy quickly and confidently.

Fusion™ Anterior Bands

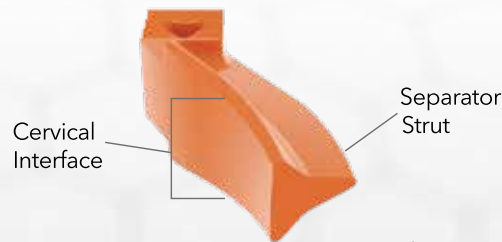
Refills	Item	Standard		Item	Bulk	
		Qty.	Price		Qty.	Price
Short	AN100-M	50	\$93	AN100	100	\$163
Tall	AN200-M	50	\$93	AN200	100	\$163



The clever features of the **Fusion™ Anterior Wedge** make it a 'must have' for all anterior restorations.

Fusion™ Anterior Wedges

Description	Item	Qty.	Kit	Item	Qty.	Price
Fusion Anterior Wedge Kit	ANK4	400	\$245			
Fusion Anterior Wedge Kit	ANK4-M	200	\$123			
Refills	Item	Qty.	Price	Item	Qty.	Price
X-Small Yellow	ANYL-M	50	\$34	ANYL	100	\$62
Small Blue	ANBL-M	50	\$34	ANBL	100	\$62
Medium Orange	ANOR-M	50	\$34	ANOR	100	\$62
Large Green	ANGR-M	50	\$34	ANGR	100	\$62



*Canadian MSRP

Canadian MSRP

Be sure to check out the website at www.garrisdental.com for info on other innovative Garrison products, demo videos and our 6-month money-back guarantee.

ORDER TODAY! 888.437.0032 or contact your authorized Garrison dealer.

Garrison
Dental Solutions

Toll-free 888.437.0032 • Fax 616.842.2430
gds@garrisdental.com • www.garrisdental.com

ADCAOH621

© 2021 Garrison Dental Solutions, LLC