

TRUCK

Cobra
RC Toys™



www.cobratoys.com
Dist. by / par : Relaxus Products Ltd.
Vancouver, BC, Canada

Cobra
RC Toys™

TRUCK

14+
AGES



IPX4
Waterproof Level

The IPX4 Waterproof Level protects from splashes and is considered water resistant.

2.4GHz READY TO RACE **1:12** SCALE **RTR** READY TO RUN **36+** km/h HIGH SPEED **2WD** TWO-WHEEL DRIVE

⚠ Caution

- (1). Small parts. Keep out of reach of small children.
- (2). Please operate in an open field without any wave interference.
- (3). When transmitter is low in power, please stop and change batteries immediately.
- (4). On backout after the removal, please do not place discarded to avoid contamination sanitation.
- (5). Please store the car and the transmitter in a dry and cool environment.
- (6). Keep away from fire, hot or humid environment.
- (7). If car battery is wet, be sure to wipe and dry it completely to avoid any damage.

Product Configuration



Monster Truck



Transmitter



USB Charger



Lithium-Iron Battery Pack



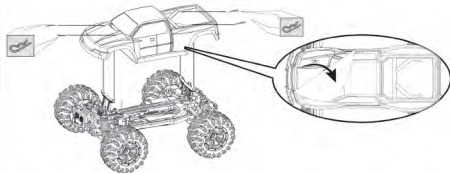
Hex Wrench



Pin X 4

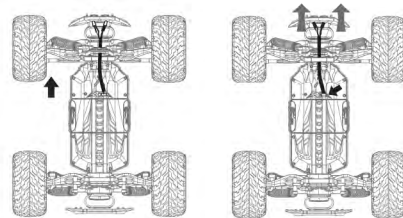
1. Remove The Truck Body

Pull out the pins and remove the body



Make sure all accessories are properly attached, remove the protection film from the body before turning on the truck.

2. Install LED wire



- (1). Make the LED wire pass through the body bracket.
- (2). Plug the LED into the front bumper block, then connect the LED wire to the connector on the ESC.

3. Install Transmitter Batteries

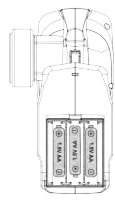
1. Remove the battery cover on the bottom of the transmitter (figure 1)
2. Install 3*1.5V AA batteries (not included) in correct polarities (Figure 2)
3. Close the battery cover (Figure 3)

⚠ Notice:

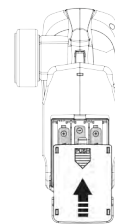
1. When installing batteries, please be sure to match the polarities labeled on the battery holder.
2. Do not mix old and new batteries.
3. Do not mix different type of batteries.



(Figure1)



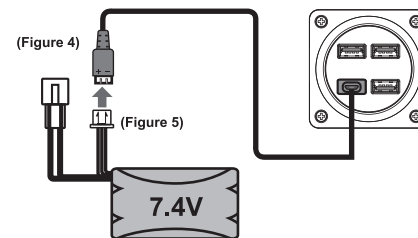
(Figure2)



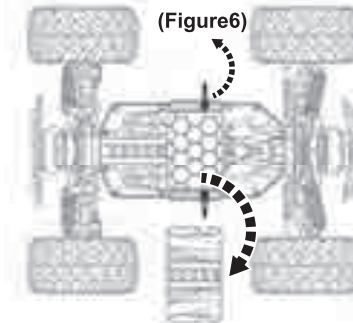
(Figure3)

4. Charge and Install Rechargeable Battery Pack

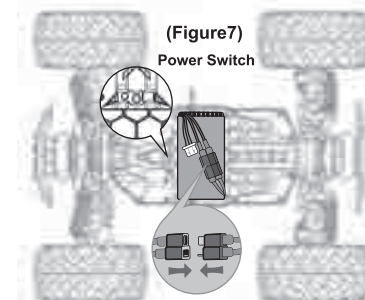
- (1)a) Insert the USB charger into the outlet (figure 4) note the power light turns red .
- b) Connect the battery pack to the USB charger (figure 5) note the green light flashes.
- c) When charging is completed , green light turns solid.



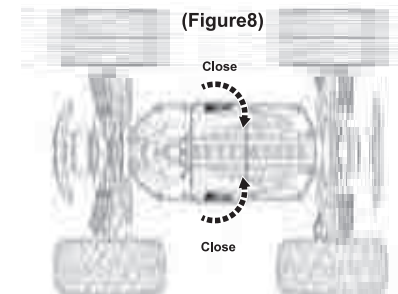
- (2) Loosen the latch of the battery cover on the chassis then remove it (Figure 6).



- (3) Place your fully charged battery in the battery slot, connect the battery connector. Don't force it, it only goes one way! (Figure 7)



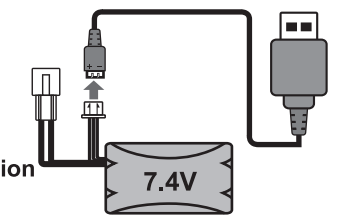
- (4) Replace the battery cover , tighten the latch (Figure 8)



5. USB Charger Precautions

CAUTION

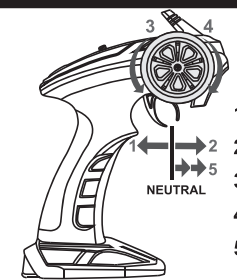
- (1).The USB charger does not apply the input current higher than 4A
- (2).When input current is higher than 4A, the USB charger will enter into the protection mode ,all the lights will turn off.



6. Transmitter instructions



- A. Power Switch
- B. Steering Trim
- C. Throttle trim (low speed to high speed)



- 1. Forward
- 2. Brake
- 3. Left
- 4. Right
- 5. Backward

(1) Red LED

(2) Green LED

PLAY TIME 20 min

1. Turn on the power switch on the transmitter, red LED will turn solid and green LED will flash.
2. When pairing successful with the car, green LED will turn solid.

⚠ Green LED will flash when power is low on the transmitter, please replace the batteries before continuing

7. Transmitter switch instructions

A. Power Switch

Power Switch

When pairing for the first time, both the car and the transmitter have to be turned on within 3 seconds to pair the frequency. Green LED on the transmitter will solid when pairing successful, and at the same time LED on the car will turn solid.

B. Steering Trim

When the chassis switch is turned on and the front tires are not straight, use the ST.TRIM to adjust the position.

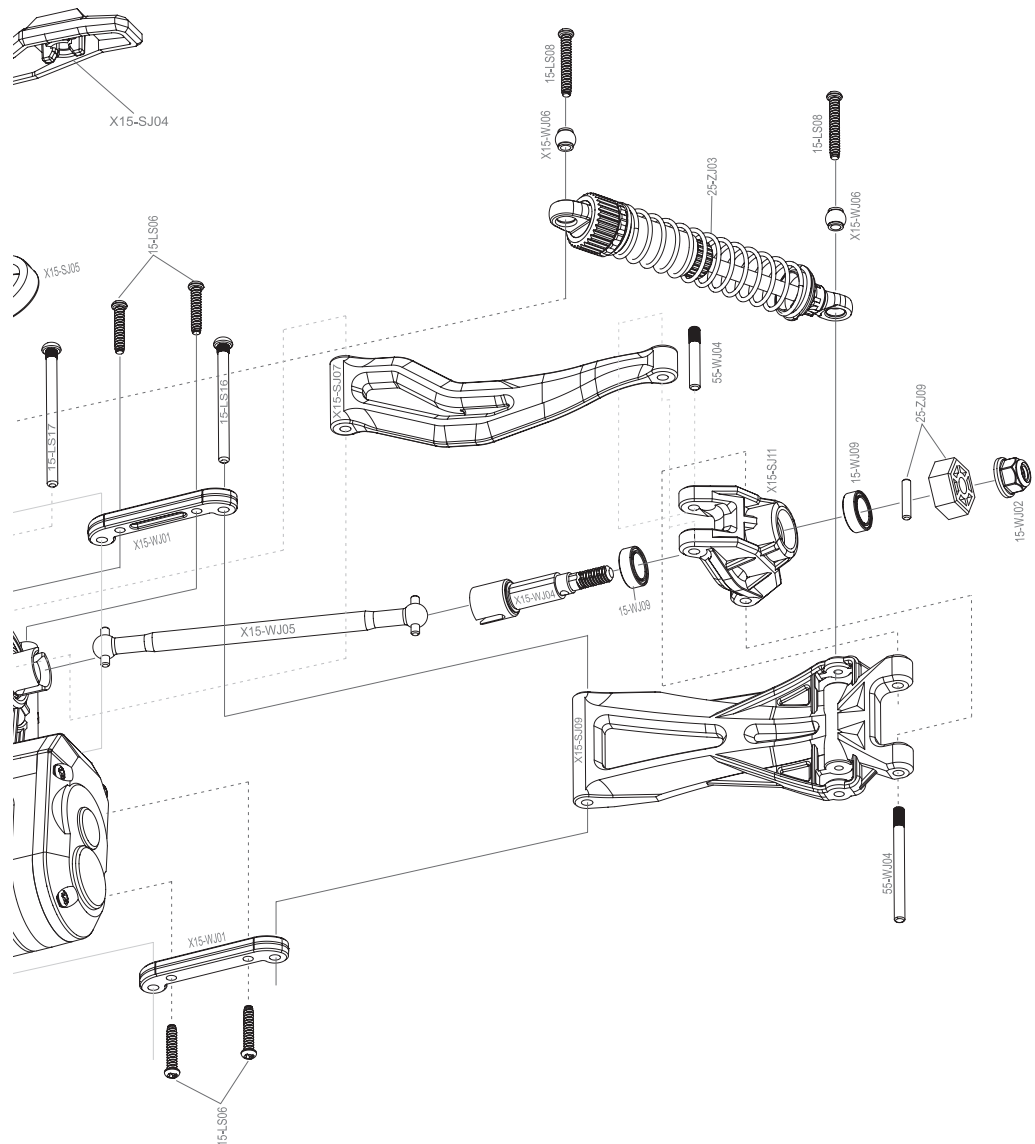
- when the car oversteers to the left, ST.TRIM should be adjusted clockwise.
- when the car oversteers to the right, ST.TRIM should be adjusted anticlockwise.

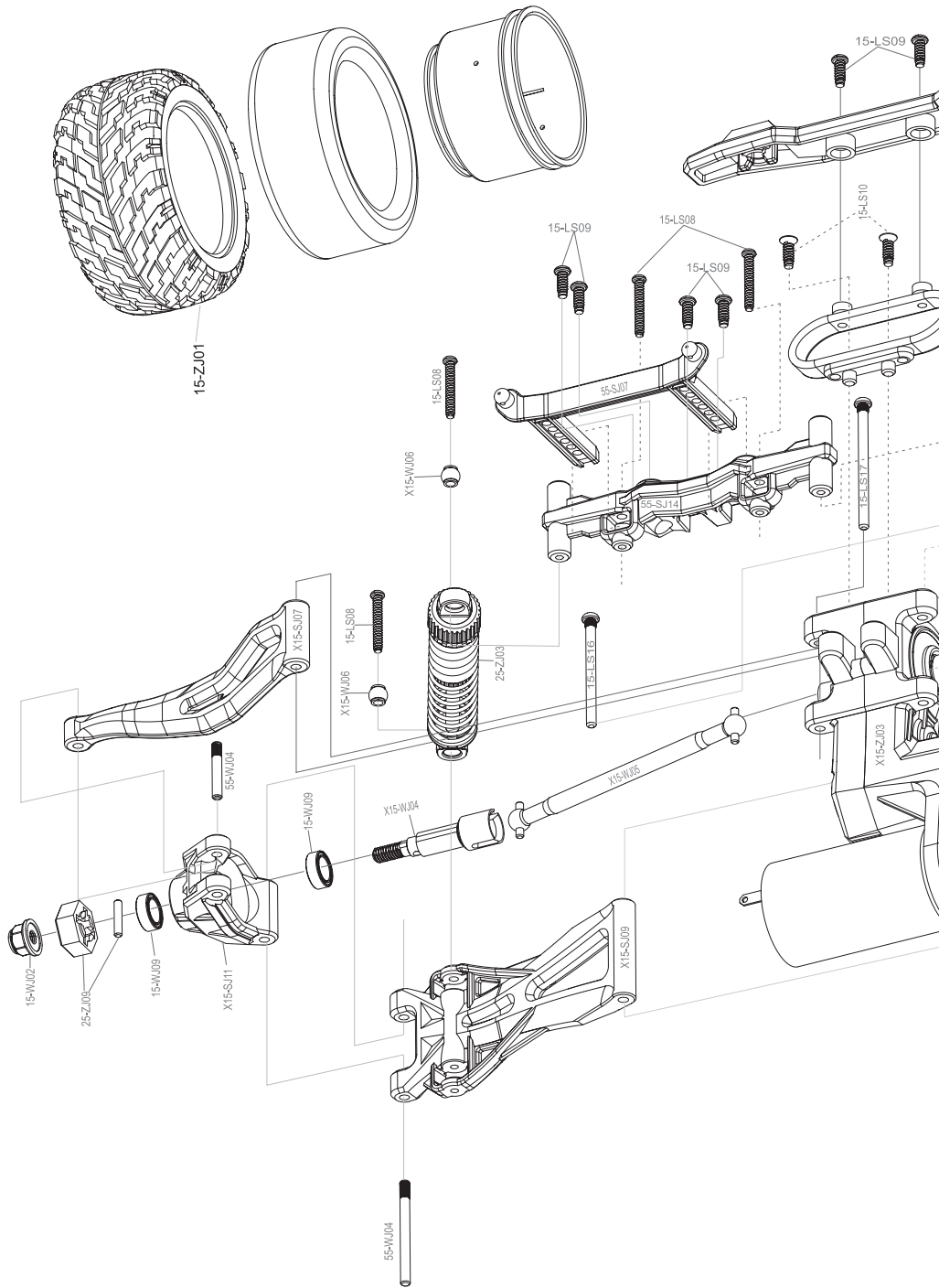
C. Throttle trim

H (High speed)

L (Low speed)

SUGGEST: Please adjust the TH.Trim to the low speed when you play with the car for the first time to avoid damaging the car!

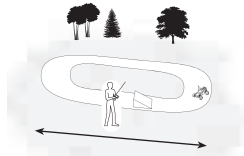




OPERATION

1. ALWAYS turn on your transmitter before you turn on the receiver in the vehicle. Always power off the receiver before turning your transmitter off.

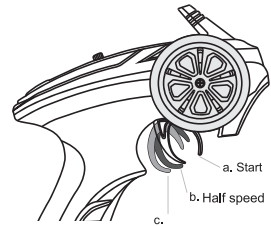
2. ALWAYS operate your vehicle in a wide open area. Operating the vehicle on slippery floor or indoors may crash because of the high speed.



3. WARNING: X9115, X9116 and X9120 waterproof feature, please be cautious that the water level should be lower than the bottom of the truck. If excessive amount of water gets into the body of the truck and cause damage or other related problems, We will not be responsible for such damages. Customers will be responsible for any replacements and additional accessories if needed.



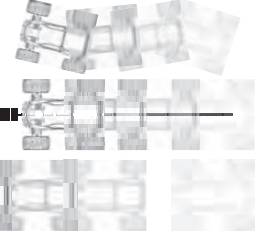
4. ALWAYS start with low speed, or the vehicle may slip or run on curves. (as shown on Pic 1) NEVER operate your vehicle in max speed. Operating the vehicle in highest speed may hurt yourself and damage your vehicle.



Start ←

Half speed ←

High speed ←



MOTOR CARE

- Seat the motor brushes by driving smoothly on a flat surface during use of the first battery charge. Failing to do so can greatly reduce motor performance and functional life.
- Prolong motor life by preventing overheating conditions. Undue motor wear results from frequent turns, stops and starts, pushing objects, driving in deep water and tall grass, and driving continuously up hill.

TROUBLESHOOTING

Problem	Possible Cause	Solution
Short run time	<ul style="list-style-type: none"> • Battery damaged/not charged • Motor dirty or brushes worn 	<ul style="list-style-type: none"> • Check/change battery • Check/clean/replace
Sluggish action	<ul style="list-style-type: none"> • Motor dirty or brushes worn • Bind in drivetrain • Vehicle battery is not charged 	<ul style="list-style-type: none"> • Check/clean/replace • Clean/adjust • Replace/recharge
Do not operate	<ul style="list-style-type: none"> • Transmitter batteries low • Transmitter powered off • Vehicle battery is not charged 	<ul style="list-style-type: none"> • Replace/recharge • Power On • Replace/recharge
Poor range	<ul style="list-style-type: none"> • Low transmitter batteries • Receiver antenna damaged 	<ul style="list-style-type: none"> • Replace/recharge • Check/repair/replace
The system will not Connect	<ul style="list-style-type: none"> • Transmitter and receiver too near each other • Transmitter and receiver too near large metal objects (vehicles, etc.) • Receiver accidentally put in bind mode so receiver is no longer bound 	<ul style="list-style-type: none"> • Move transmitter 8–12 feet (2.4–3.6m) from receiver • Move away from large metal objects (vehicles, etc.) • Rebind transmitter and receiver
The receiver quits responding During operation	<ul style="list-style-type: none"> • Low battery voltage 	<ul style="list-style-type: none"> • Completely recharge battery
Receiver loses its bind	<ul style="list-style-type: none"> • Transmitter accidentally put in bind mode, ending bind to receiver 	<ul style="list-style-type: none"> • Bind transmitter to receiver



CE Compliance for Users in the European Union

WEEE Compliance:

Please help the environment by disposing of your product responsibly at the end of its life. The wheeled bin symbol indicates that this product should not be disposed of in your household waste containers. Instead, the product should be disposed of by using a designated collection point for the recycling of waste electrical and electronic equipment, The Waste of Electrical and Electronic Equipment (WEEE) Directive (2002/96/EC) requires that the best available recycling techniques be employed to minimize the impact on the environment. Recycling electronics helps by keeping harmful chemicals out of the environment, and also saves money by reusing precious metals. Remove any batteries and dispose of them and the product at your local authority's recycling facility. For more information about where you can drop off your waste equipment for recycling, please contact your local city office, your household waste disposal service or the location where you purchased this product.

Declaration of Conformity for RED Directive In accordance with IEC 17050-1

This is to certify that the following products conform to the requirements of the RED Directive 2014/53/EU and that all essential test suites have been carried out.

FCC PART 15 B Notice CAUTION:

Changes or modifications not expressly approved by the party responsible for compliance could void the user's authority to operate the equipment.

NOTE:

This equipment has been tested and found to comply with the limits for a Class B digital device, pursuant to part 15 of the FCC Rules. These limits are designed to provide reasonable protection against harmful interference in a residential installation. This equipment generates, uses and can radiate radio frequency energy and, if not installed and used in accordance with the instructions, may cause harmful interference to radio communications. However, there is no guarantee that interference will not occur in a particular installation. IF this equipment does cause harmful interference to radio or television reception, which can be determined by turning the equipment off and on, the user is encouraged to try to correct the interference by one or more of the following measures:

- Reorient or relocate the receiving antenna.
- Increase the separation between the equipment and receiver.
- Connect the equipment into an outlet on a circuit different from that to which the receiver is connected.
- Consult the dealer or experienced radio/TV technician for help.

This device complies with part 15 of the FCC Rules. Operation is subject to the following two conditions:

- (1) this device may not cause harmful interference, and
- (2) this device must accept any interference received, including interference that may cause undesired operation.

