



# HI-LITE MFG. CO., INC.

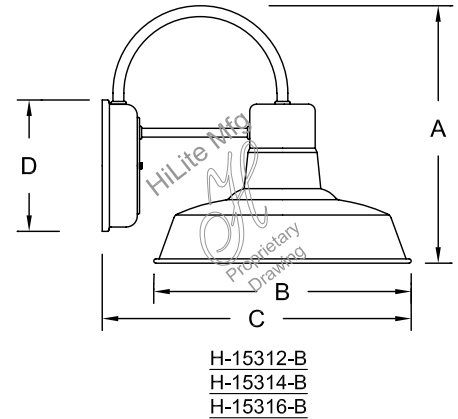
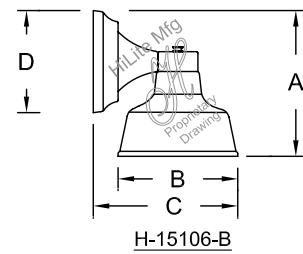
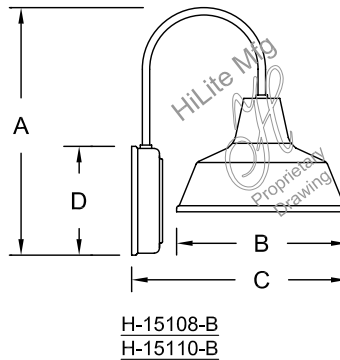
13450 Monte Vista Avenue  
Chino, California 91710  
Telephone: (909) 465-1999  
Fax: (909) 465-0907

Job Name: \_\_\_\_\_  
Type: \_\_\_\_\_  
Quantity: \_\_\_\_\_

**For Wall  
Mount Only**

Item Number	Height (A)	Width (B)	Projection (C)	Canopy Dia. (D)
H-15106-B	8"	6"	8"	5 1/2"
H-15108-B	12"	8"	10"	6 1/4"
H-15110-B	13"	10"	13"	6 1/4"
H-15312-B	12-1/2"	12"	15"	6 1/4"
H-15314-B	15"	14"	16"	6 1/4"
H-15316-B	15"	16"	18"	6 1/4"

## Warehouse Shade Collection



Fixture No.	Fixture Color	Optional Accessories	Accessory Color	Wattage/ Lamp Options	Ballast Options	Voltage
H-15106-B <sup>(1)</sup>	Standard <sup>(2)</sup>	<b>CGU</b> (Cast guard & glass)	Standard <b>91</b> (Black) <b>93</b> (White)	Incandescent <sup>(1) (5)</sup> (Fixture is standard 75W, 100W or 200W. Do not specify.)	Ballast option not available for INC.	Incandescent (Fixture is standard 120V. Do not specify.)
H-15108-B <sup>(1)</sup>	<b>91</b> (Black) <b>93</b> (White)	<b>LCGU</b> (Large cast guard & glass)	<b>95</b> (Dk. Grn) <b>96</b> (Galv.) <b>BR47</b> (Rust)	CFL <sup>(3) (5)</sup> (Compact Fluorescent) <b>13/CFL</b> <b>18/CFL</b> <b>26/32/42/CFL</b> <b>26/CFL</b> <b>32/CFL</b> <b>42/CFL</b> <b>57/CFL</b>	<b>RB</b> <sup>(4)</sup> (Remote)	CFL <b>M</b> (Multi 120/277V)
H-15110-B <sup>(1)</sup>	<b>95</b> (Dk. Grn)	<b>WGU</b> (Wire guard & glass)	For all finishes see pages 344-348.	<b>DMB</b> (Dimmable Ballast for CFL. Add to Part No.)	<b>OBB</b> (Onboard)	HID
H-15312-B	<b>96</b> (Galv.)	<b>LWGU</b> (Large wire guard & glass)		HID <sup>(3)</sup> (High Intensity Discharge)	<b>OBB</b> (Fluorescent Options 13W-57W)	RB and BCM <b>M</b> (Multi 120/208/240/277V)
H-15314-B	<b>BR47</b> (Rust)	<b>ARN</b> (Acorn globe)		MH <sup>(3) (5)</sup> (Metal Halide) <b>35/MH</b> <b>50/MH</b> <b>70/MH</b> <b>100/MH</b> <b>150/MH</b> <b>175/MH</b>	For specs see pages 341-343.	
H-15316-B	<b>BK01, GN20.</b>	<b>LARN</b> (Large acorn globe)		HPS <sup>(3) (5)</sup> (High Pressure Sodium) <b>50/HPS</b> <b>70/HPS</b> <b>100/HPS</b> <b>150/HPS</b>		
	Upgraded Finishes <b>29, 66, 82, 90, 92, 94, 97, 99, 100, 103, 104, 105, 110, 112, 113, 114, 115, 117, 118, 119, 120, 127, 128, 129, 133, 134, 135, 136, 138, 139, 140, 01, 11, 22, 25, 33, 77, 89, 24, 44, 48, 49.</b>	<b>WGR</b> (Wire guard)		LED <b>20W</b> <b>30W</b>		LED See specifications for complete part number.
	For finish specs see pages 344-348.	For specs and glass color see pages 321-344.				LED See specifications for complete part number.

H-15312-B - 91 / WGR - 91 / 13/CFL - BCM - M

### ORDER EXAMPLE

(USE THIS FORMAT TO PLACE ORDER)

#### Notes:

- H-15106-B available for 75W Max INC only and not available with glass enclosures.  
H-15108-B and H-15110-B available for 100W Max INC only and not available with glass enclosures.
- For interior finish of fixture refer to color chart on pages 344-348.  
H-15312-B, H-15314-b and H-15316-B not available in copper finish.
- Requires Globe Option (See pages 339-341 for Globe Options)  
CGU and WGU Max. Wattage 100W INC, 100W HID and 32W CFL.  
LWGU, LCGU, ARN and LARN Max Wattage 200W INC, 175W HID and 57W CFL.
- (RB) Remote ballast not available for Fluorescent Lamping.
- Socket Bases: INC and HID are medium base, CFL are GX24Q.  
Suitable for wet location.