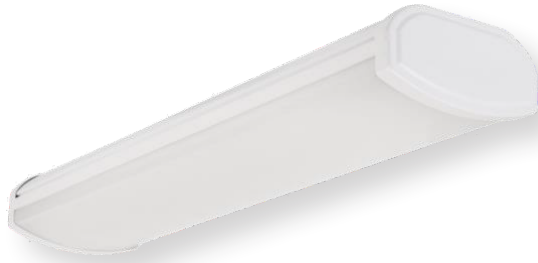


# Wrap Lights

## Wrap Lights for Commercial and Residential Applications



**4' Wrap Light**  
**34w 3600 LM**  
**54676241**

**ETI ADVANTAGE**

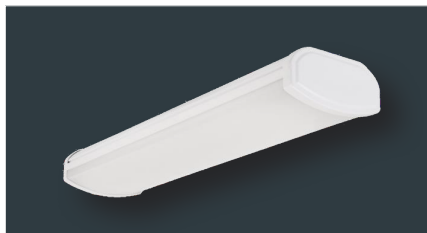


- ✓ Optional motion control, battery backup, and 0-10v dimmable
- ✓ High-impact resistant poly-carbonate Lens
- ✓ Patented Color Preference model available
- ✓ Multiple lumen packages

### AVAILABLE MODELS

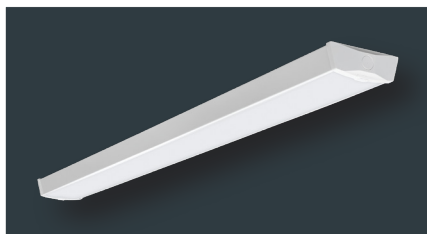
#### Features & Specifications

- Wide 110° beam angle • 120-277V/120V • >80CRI • 0-10V Dimmable • Temp rating -4°F-113°F
- L70 >50,000 • 5 year limited warranty • 4000K\* [\*except CP model]



#### 120-277V Commercial/Residential Wrap Lights

<b>Base Model</b> 4' Wrap 34W 3600 LM 4000K 54656241	2' Wrap 20W 1800 LM 4000K 54655441	<b>Includes Motion Sensor</b> 4' Wrap 34W 3600 LM 4000K, 54656241-I	<b>Includes BBU</b> 4' Wrap 34W 3600 LM 4000K 54656341
--	---	--	--



<b>Includes Motion sensor &amp; BBU</b> 4' Wrap 34W 3600 LM 4000K, 54656341-I	<b>High Lumen</b> 4' Wrap 57W 5200 LM 4000K 54677441	<b>Compact Wrap</b> 4' Wrap 40W 3600 LM 4000K 56513141
--	--	--



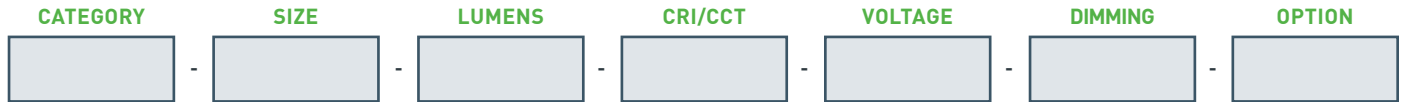
#### 120V Residential Wrap Lights

<b>Wrap Light</b> 40" 30W 2600 LM 30/40/5000K 56514142	<b>4' Wrap with Motion Sensor</b> 4' 40W 3600 LM 4000K, 54676142	<b>Closet Light</b> 18" Wrap 16W 1200 LM 4000K 53603142
--	---	---

# Wrap Lights

Project:   
 Part Number:

## PART NUMBER GUIDE



## PRODUCT/SKU DETAILS

### GENERAL SPECIFICATIONS:

<b>Voltage</b>	120-277VAC	<b>Frequency</b>	50/60 Hz.	<b>CRI</b>	80
<b>Power Factor</b>	>.90	<b>THD</b>	< 20%	<b>Rating</b>	cULus Wet
<b>Temperature</b>	-4°F to +113°F	<b>Rated Life</b>	50,000 hrs.	<b>Warranty</b>	5 Year Limited

## ORDERING GUIDE

Part #	Model #	Description	Replaces	LED Watts	Lumens	LPW	CCT	Product Dimensions	CRI	Input Voltage	Case Pack
WR-4-36-940-MV-D	54676241	4' Wrap Light - 0-10V Dimmable	2 x 32w T8	34w	3,600	106	4000K	48 x 5.9 x 2.9 in.	90	120-277V	2
WR-4-36-940-MV-D-OS	54676241-I	4' Wrap with Step Dimming Motion Sensor	2 x 32w T8	34w	3,600	106	4000K	48 x 5.9 x 2.9 in.	90	120-277V	2
WR-4-36-940-MV-D-EM	54676341	4' Wrap with Battery Back-Up	2 x 32w T8	34w	3,600	106	4000K	48 x 5.9 x 2.9 in.	90	120-277V	2
WR-4-36-940-MV-D-EM-OS	54676341-I	4' Wrap with Battery Back-Up and Step Dimming Motion Sensor	2 x 32w T8	34w	3,600	106	4000K	48 x 5.9 x 2.9 in.	90	120-277V	2
WR-2-20-940-MV-D	54655441	2' Wrap Light - 0-10V Dimmable (ENERGY STAR®)	32w T8	20w	1,800	90	4000K	23.6 x 5.9 x 2.9 in.	90	120-277V	4
WR-4-57-940-MV-D	54677441	4' High Lumen Output Wrap Light - 0-10V Dimmable (ENERGY STAR®)	3 x 32w T8	57w	5,200	91	4000K	48 x 10 x 3.1 in.	90	120-277V	2
WR-4-36-840-MV	56513141	4' Compact Wrap Light (ENERGY STAR®)	2 x 32w T8	40w	3,600	90	4000K	48 x 5 x 1.8 in.	80	120-277V	6
WR-40-26-802-SV-D*	56507113	40" COLOR PREFERENCE® Wrap Light - Triac Dimmable (ENERGY STAR®)	2 x 32w T8	30w	2,600	87	30/40/5000K	39.9 x 4 x 2 in.	80	120V	2
WR-4-40-940-SV-N-OS*	54676142	4' Wrap Light with Motion Sensor (ENERGY STAR®)	2 x 32w T8	40w	3,600	90	4000K	48 x 5.9 x 2.9 in.	90	120V	2
CS-18-12-840-SV*	53603142	18" Closet Light with Pull Chain (ENERGY STAR®)	32w T8	16w	1,200	75	4000K	18 x 4.3 x 2 in.	80	120V	2

## PACKAGING SPECIFICATIONS

Part #	Model #	UPC	UCC	Inner Carton Dimensions	Inner Carton Weight	Shipper/Master Carton Dimensions	Shipper/Master Carton Weight
WR-4-36-940-MV-D	54676241	849489005096	50849489005091	51.6 x 6.9 x 3.8 in.	6.8 lbs.	52.3 x 8.3 x 7.6 in.	13.98 lbs.
WR-4-36-940-MV-D-OS	54676241-I	849489005164	50849489005169	51.6 x 6.9 x 3.8 in.	6.8 lbs.	52.3 x 8.3 x 7.6 in.	13.98 lbs.
WR-4-36-940-MV-D-EM	54676341	849489009933	50849489009938	51.6 x 6.9 x 3.8 in.	10 lbs.	52.3 x 8.3 x 7.6 in.	21.2 lbs.
WR-4-36-940-MV-D-EM-OS	54676341-I	849489001968	50849489001963	51.6 x 6.9 x 3.8 in.	10 lbs.	52.3 x 8.3 x 7.6 in.	21.2 lbs.
WR-2-20-940-MV-D	54655441	849489009988	50849489002274	27.7 x 6.9 x 3.8 in.	4.2 lbs.	28.3 x 8.3 x 14.6 in.	16.7 lbs.
WR-4-57-940-MV-D	54677441	849489009995	50849489009990	49.4 x 11.4 x 4.65 in.	9.5 lbs.	50.0 x 10.0 x 12.1 in.	19.8 lbs.
WR-4-36-840-MV	56513141	849489003849	50849489003844	51.6 x 5.5 x 2.7 in.	4.5 lbs.	52.2 x 8.8 x 11.9 in.	28.3 lbs.
WR-40-26-802-SV-D	56507113	849489006925	50849489006920	42 x 4.9 x 3.1 in.	3.4 lbs.	42.5 x 6.8 x 5.6 in.	8.1 lbs.
WR-4-40-940-SV-N-OS	54676142	849489000817	50849489000812	51.6 x 6.9 x 3.8 in.	6.5 lbs.	52.3 x 8.3 x 7.6 in.	13.6 lbs.
CS-18-12-840-SV	53603142	849489007540	50849489007545	19.2 x 5.4 x 3.1 in.	1.7 lbs.	19.8 x 6.8 x 6.1 in.	4.03 lbs.



Warehouse-Lighting.com  
 2750 South 163<sup>rd</sup> St  
 New Berlin, WI 53151

[Warehouse-Lighting.com](http://Warehouse-Lighting.com)  
 Phone: 888-454-4480  
[info@warehouse-lighting.com](mailto:info@warehouse-lighting.com)