



PROJECT NAME: _____ CATALOG NUMBER: _____
 NOTES: _____ FIXTURE SCHEDULE: _____

100W LED Street Light

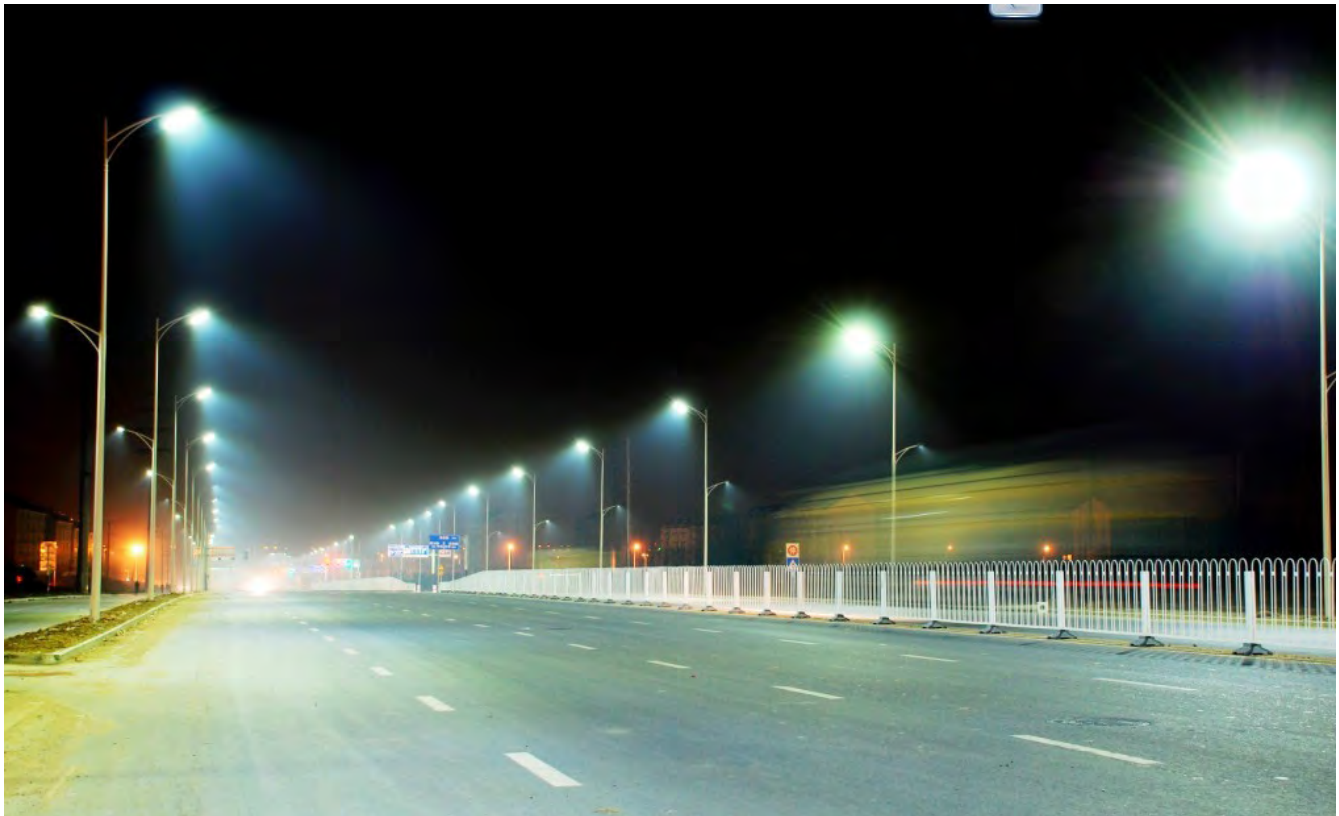


Features

- Lumileds LED, high luminous efficiency and long working life.
- High efficiency LED Driver, the wide range input voltage AC100-277V / 277 - 480 V.
- Die Cast aluminium cooling design, high quality and better cooling for LED $T_j < 85^\circ\text{C}$. Excellent
- Optics design, greatly improve the light utilization and evenness.

Product Applications

WSD LED LED Street Light series can be widely used for outdoor lighting (wet locations), excellent for parking lots, common areas, walkways and sidewalks.



Warehouse-Lighting.com
 2750 South 163rd St
 New Berlin, WI 53151

Warehouse-Lighting.com
 Phone: 888-454-4480
info@warehouse-lighting.com



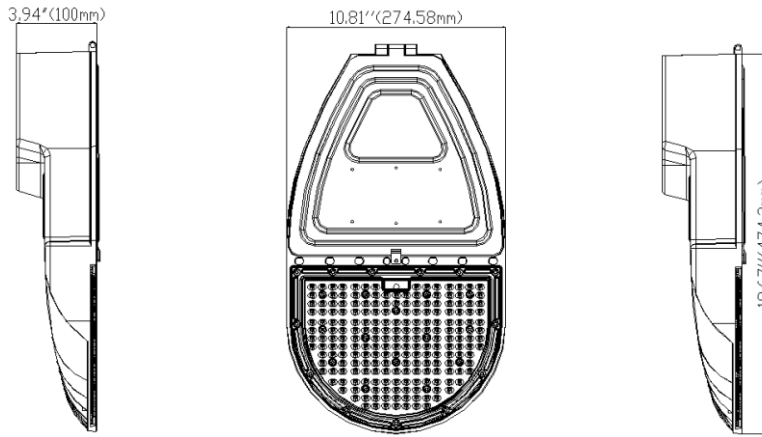
PROJECT NAME: _____ CATALOG NUMBER: _____
 NOTES: _____ FIXTURE SCHEDULE: _____

Specifications

Unit : inch(mm)

Structure Features

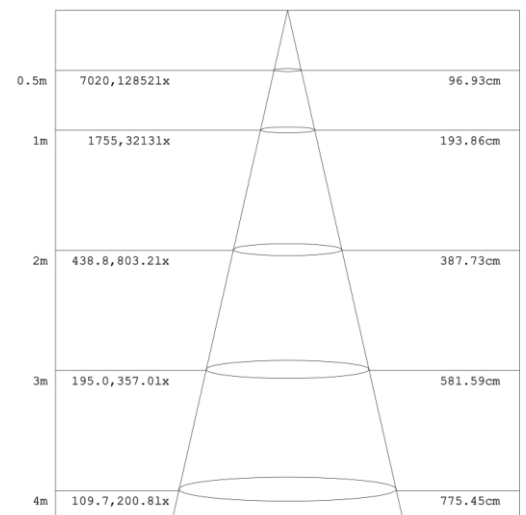
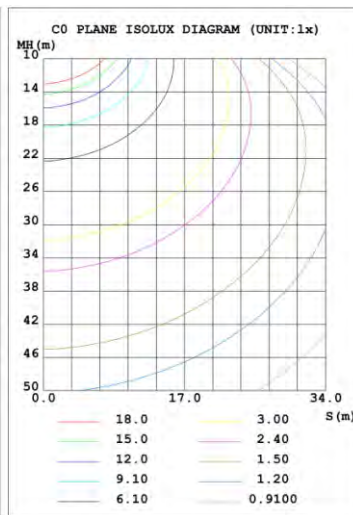
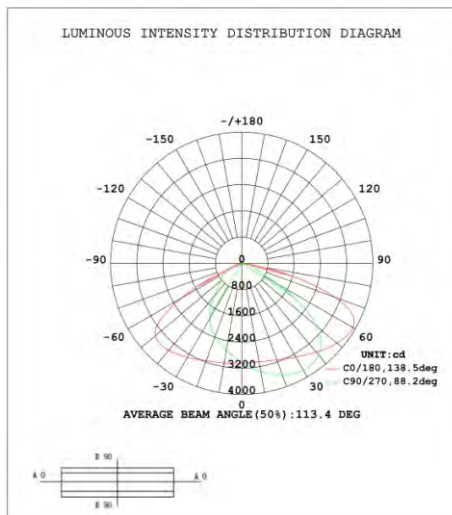
- Shell materials: Aluminum & PC.
- Finish: Dark Bronze/White
- Net weight : 4.5Kg (9.9 lbs)



Technical Parameters

WSD-ST10W27-50K-S			
Power	100W	Lighting Angle	85*140°
Input Voltage	AC100-277V/277-480V	LED Brightness Decay	<5%/6000 hrs
PF	>0.95	Working Life	>50000 hrs
Driver Efficiency	>90%	Working Temperature	-30 - +45°C
Luminous Flux	15000 Lm	Storage Temperature	-40 - +80°C
Color Temperature	4000K/5000K	Protection Level	Wet Location/IP65
CRI	Ra>70	Cable	Input Connect, 0.6mm
Adapter specification	ST-ADP2.5-3		

Photometry



Example:WSD-ST10W27-50K-S

WSD	ST	10W	27	50K	S
Company	Product	Power	Voltage	Color Temp	Finish
	ST	10W(100W)	27	57K(5700K)±500K	S (Silver)
WSD LED INC	Street Light		AC100-277V		
			48		
			AC277-480V		



Warehouse-Lighting.com
 2750 South 163rd St
 New Berlin, WI 53151

Warehouse-Lighting.com
 Phone: 888-454-4480
info@warehouse-lighting.com