

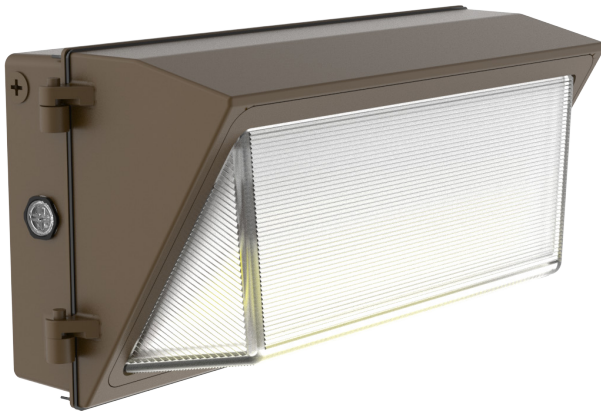
WMXE SERIES LED OUTDOOR LIGHTING

WESTGATE
THE FUTURE IS HERE...AND IT'S QUITE BRIGHT!

WMXE-LG-100-150W-MCTP-P-EM

ADJUSTABLE BUILDER SERIES TRADITIONAL WALL PACK WITH EMERGENCY BACKUP

MCTP Multi Color Temperature & Multi Power/Wattage (Selectable)

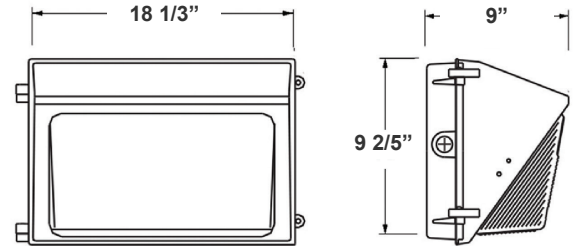


Customer Name: _____

Project Name: _____

Note: _____

Type: _____



18 1/3"(W) x 9 2/5"(H) x 9"(D)

Ideal for general site lighting, alleys, loading docks, doorway, pathway, and parking areas.

Features

- ADC12 Aluminum Heat Sink, Outdoor Powder Coating
- Multi-Power Switch is Inside the Fixture
- IP67 Stainless Steel Test Button with Integrated Indicator Light
- 7-year Warranty
- Prismatic Borosilicate Glass Lens
- 8W, 48V, 2500mAh Li-ion Battery for Minimum 90 Minutes Emergency Operation

Technical Specifications

Electrical:

- Input Wattage: 100/120/150W
- Input Voltage: 120-277V AC 50/60Hz
- Input current: 1.4 A
- Power factor: >0.9
- Efficacy: 140 LPW

Mechanical:

- ADC12 Aluminum Heat Sink, Outdoor Powder Coating
- Lens: Prismatic Borosilicate Glass Lens
- DC Button Photocell with ON/OFF switch Included
- Same Footprint as Traditional HID Wall Packs
- Four 1/2" Hubs: 1 Top, 1 on Each Side, 1 Rear
- Mounting: Wall Mounting
- Operating Temperature: -40°F ~ 104°F
- IP67 Stainless Steel Test Button with Integrated Indicator Light, Wet Locations

Lighting:

- Dimming: 0-10V Dimming
- Multi-Power Switch is Inside The Fixture
- Total Lumens: 21000LM Max.
- Color Temperature: 3000K/4000K/5000K
- 8W, 48V, 2500mAh Li-ion Battery for Minimum 90 Minutes Emergency Operation
- CRI: >70
- Lifespan: 70000 Hrs.

Applications:

- Ideal for general site lighting, alleys, loading docks, doorway, pathway and parking areas.
- Replace existing HID wall packs
- Great for use with photocell

Other Models:

- 150W | 21000LM | WMXE-LG-100-150W-MCTP-P-BK

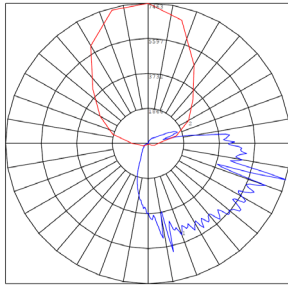
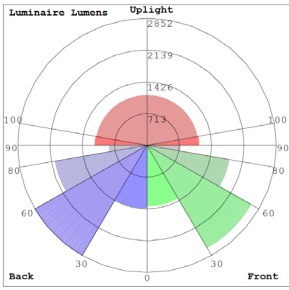


Phone: (877) 805-2252 | Fax: (877) 805-2252
www.westgateemfg.com |

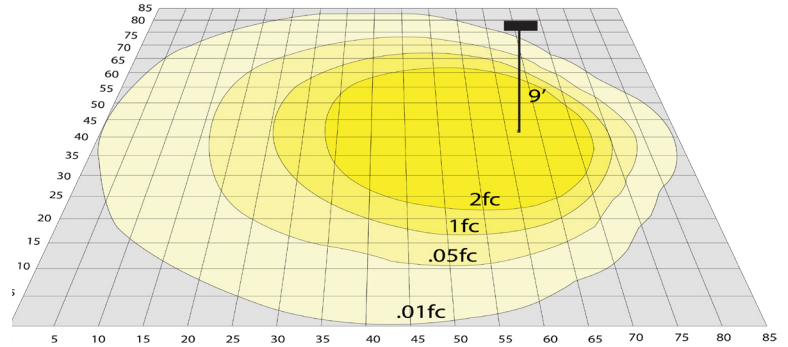


W/G-06282022

Photometrics: WMXE-LG-100-150W-MCTP-P-EM



BUG Rating: B3-U5-G5



Area 85'x 85' Mounting Height: 9'

Other Views:



Side View



Front View



Back View

Performance Table: WMXE-LG-100-150W-MCTP-P-EM

MODEL NO.	Wattage	Voltage	Lumens	Color Temp.	BUG Rating	LPW
WMXE-LG-100-150W-MCTP-P-EM	100W	120-277V	14000LM 16800LM 21000LM	3000K 4000K 5000K	B3-U5-G5	140
	120W					
	150W					



Sample Ordering

Model	Size	Min. Watt	Max. Watt	Color Temp.	Photocell	Battery
WMXE	LG	100	150W	MCTP	P	EM

Accessories:

Blank = No Option For Accessories
 WML-SH3= SHIELD FOR WMXE 120W

Factory-Installed Options:

Blank = No Option For Accessories
 OPT-SEN-3MRLV-5= PROGRAMMABLE MICROWAVE
 OPT-CLR-85= COLOR PAINT
 WEC-8RC= REMOTE CONTROL
 OPT-TRS-T20= TAMPER RESISTANT SCREW

ACCESSORY:



WML-SH3

FACTORY-INSTALLED OPTION:



WEC-8RC

OPT-SEN-3MRLV-5

Example:

1. WMXE-LG-100-150W-MCTP-P-EM (FOR 120W WMXE 150K FIXTURE 120-277V)
2. WMXE-LG-100-150W-MCTP-P-EM (FOR 120W WMXE 150K FIXTURE 120-277V)
 OPT-EM-OD3INT (INTERNAL EMERGENCY BACKUP BATTERY)

Dimensions:



WML-SH3
 SHIELD FOR WMXE 120W

