



INDUSTRIAL AND COMMERCIAL  
LIGHTING MFR SINCE 2003

PROJECT NAME \_\_\_\_\_  
ITEM # \_\_\_\_\_  
FIXTURE SCHEDULE \_\_\_\_\_  
NOTES \_\_\_\_\_

# WL-NLS Series



With its slim design, this linear strip light uses a high-quality housing to produce a sleek, subtle aesthetic that meets interior ceiling application needs. The fixture is surface mountable or can be suspended with optional hanging kits. The high-quality steel housing is painted with high reflectance paint, improving lumen output. It is ideal for offices, classrooms, hallways, workshops, meeting rooms and much more.

## Specifications WL-NLS4

Wattage Selectable	22W/33W/45W	CRI	80
CCT Selectable	3000K/4000K/5000K	Mount Options	Surface or Suspended
Lumens	5500*	Warranty	5 Year
Voltage	120-277V	Certifications	cULus, DLC Standard 5.1
Efficacy	123 lm/w	Starting Temp	-4°F to 122°F

\*Efficacy based on 5000K





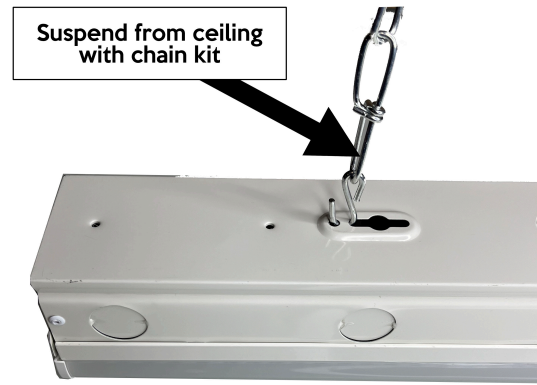
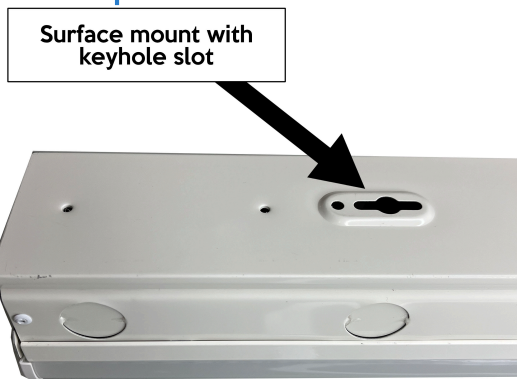
INDUSTRIAL AND COMMERCIAL  
LIGHTING MFR SINCE 2003

PROJECT NAME  
ITEM #  
FIXTURE SCHEDULE  
NOTES

## Order Information

Strip Light Series WL-NLS				Example: WL-NLS4-C45WT-DMV-G2	
Series	Length	CXXWT	Voltage/Dimming	Generation	Mounting Option
WL-NLS	4'	45	DMV 120-277v 0-10v dimming	G2	<b>Blank</b> None/Surface Mount
	8'	70			<b>3CHK</b> 3' Hanging Chain Kit

## Mount Options



## DLC Information

Item	DLC Version	DLC ID	Wattage Selectable	Lumens*
WL-NLS4-C45WT-DMV-G2	5.1 Standard	S-H04GIE	22W	2700
			33W	4400
			45W	5500
WL-NLS8-C70WT-DMV-G2	5.1 Standard	S-5EDGYZ	33W	4150
			50W	6300
			69W	8700

\*Lumens based on 5000K



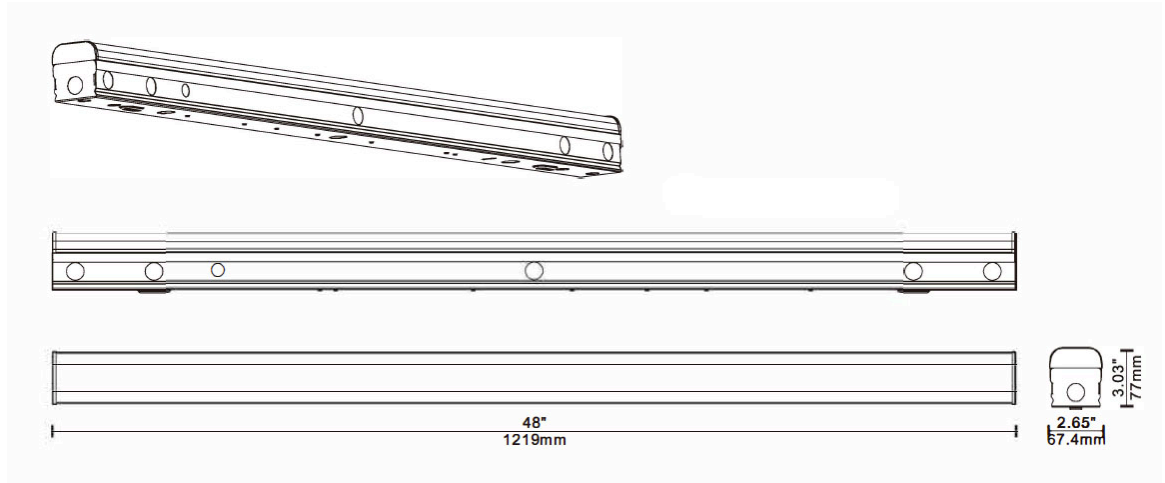
INDUSTRIAL AND COMMERCIAL  
LIGHTING MFR SINCE 2003

PROJECT NAME \_\_\_\_\_  
ITEM # \_\_\_\_\_  
FIXTURE SCHEDULE \_\_\_\_\_  
NOTES \_\_\_\_\_

## Dimensions

Item	Length	Width	Height	Weight
WL-NLS4-C45WT-DMV-G2	47.8"	2.65"	3.03"	2.33 lbs.
WL-NLS8-C70WT-DMV-G2	95.6"	2.65"	3.03"	4.20 lbs.

### WL-NLS4



### WL-NLS8

