

UCLL 2x2

LED Low Profile Center Basket
Recessed or Surface Mount

FEATURES & SPECIFICATIONS

INTENDED USE

Low profile LED center lens fixtures are ideal for shallow plenum spaces. Specification grade, direct / indirect center diffuser appearance luminaire provides smooth and uniform ambient lighting for all commercial and industrial buildings with recessed configurations. Reflected light from matte surfaces provide a softened “sky light” appearance to the modern office environment. Linear ribbed lens encloses the LED array and is designed to maximize efficiency and minimize glare.



SIZE W x L x H in inches

24”W x 24”L x 3.25”D

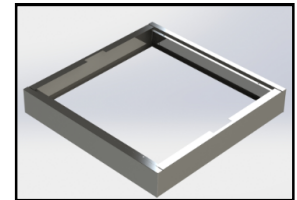
MATERIALS & FEATURES

Housing is die-formed and embossed code 22 gage steel. Luminaire body finish is high reflectance baked white enamel, with matte white re-reflectors. Wiring knockouts are provided on the back of housing. Center diffuser snaps into place; no tools are required for removal. Diffuser is ribbed acrylic lens provides increased light output.

- Direct / indirect mimics “sky light” appearance
- Matte white reflective surfaces for soft, uniform light distribution



Specially designed lens (LL) for LED Array to provide enhanced light transmission while minimizing glare and LED diode shadows.



Shroud for surface mounted.

MOUNTING

Recessed inverted T-Bar ceilings. Grid mount or Surface Mount.

ORDERING INFORMATION

STANDARD

UC	LL	22L	J24W2700L	DMV	40K	
Series	Lens Material	Size	Wattage and Lumen		Driver	Color Temperature
UC Center Basket Grid Mount	LL Linear Ribbed Lens PF Perforated Basket	22L	J24W2700L 24 System Watts, 2700 Delivered Lumens	DMV 0-10V Dimming	30K 3000K 35K 3500K 40K 4000K 50K 5000K	
SHUC Center Basket, Surface Mount			J28W3150L 28 System Watts, 3150 Delivered Lumens			
SSUC Center Basket Sensor - On/Off			J32W3600L 32 System Watts, 3600 Delivered Lumens			
			J42W4300L 42 System Watts, 4300 Delivered Lumens			

* Consult FACTORY for more options

Catalog Number:
Notes:

UCLL 2x4

LED Low Profile Center Basket
Recessed or Surface Mount

FEATURES & SPECIFICATIONS

INTENDED USE

Low profile LED center lens fixtures are ideal for shallow plenum spaces. Specification grade, direct / indirect center diffuser appearance luminaire provides smooth and uniform ambient lighting for all commercial and industrial buildings with recessed configurations. Reflected light from matte surfaces provide a softened “sky light” appearance to the modern office environment. Linear ribbed lens encloses the LED array and is designed to maximize efficiency and minimize glare.



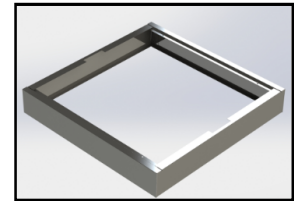
SIZE W x L x H in inches
24”W x 48”L x 3.25”D

MATERIALS & FEATURES

Housing is die-formed and embossed code 22 gage steel. Luminaire body finish is high reflectance baked white enamel, with matte white re-reflectors. Wiring knockouts are provided on the back of housing. Center diffuser snaps into place; no tools are required for removal. Diffuser is ribbed acrylic lens provides increased light output.



Specially designed lens (LL) for LED Array to provide enhanced light transmission while minimizing glare and LED diode shadows.



Shroud for surface mounted.

- Matte white reflective surfaces for soft, uniform light distribution

ORDERING INFORMATION

Example: **UCLL24LJ32W4350LDMV40K**

STANDARD

UC	LL	24L	J32W4350L	DMV	40K
Series	Lens Material	Size	Wattage and Lumen	Driver	Color Temperature
UC Center Basket Grid Mount	LL Linear Ribbed Lens PF Perforated Basket	24L	J32W4350L 32 System Watts, 4350 Delivered Lumens	DMV 0-10V Dimming	30K 3000K 35K 3500K 40K 4000K 50K 5000K
SHUC Center Basket Surface Mount			J40W5350L 40 System Watts, 5350 Delivered Lumens		
SSUC Center Basket Sensor - On/Off			J48W6100L 48 System Watts, 6100 Delivered Lumens		
			J57W6800L 57 System Watts, 6800 Delivered Lumens		
			Value Line		
			V45W5000L 45 System Watts, 5000 Delivered Lumens		

Catalog Number:
Notes: