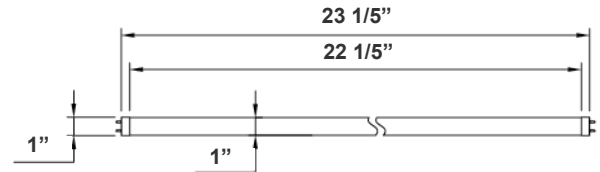


T8 SERIES COMMERCIAL INDOOR LIGHTING

T8-EZX-MCT-GS-2FT-8W-C
T8 TUBE GLASS, UNIVERSAL A+B

Customer Name: _____
Project Name: _____
Note: _____ | Type: _____



23 1/5"(L) X 1" (D)

T8 Tube switches from fluorescent tubes to LED, giving more cost efficiency by providing the same amount of lumen output with less energy consumption. The LED tube offers a soft and bright light distribution.

Features

- Type A + B (Dual UL)
- Type A: With Existing Ballast - UL No. E366061
- 5-Year Warranty
- Type B: Ballast Override (AC Direct), Connect One End or Both Ends (Dual Function) - UL No. E342884

Technical Specifications

Electrical:

- Voltage: 120-277V; 50/60Hz AC
- Power Factor: >0.90
- THD: <20%
- Wattage: 8W
- Efficacy: 125 LPW

Mechanical:

- Base Type: G13
- Better Transparency and Thermal Conductivity than Plastic
- Clear Lens
- Ambient Operating Temperature: -13°F to 113°F
- IP Rating: IP20 (Indoor)

Lighting:

- MCT: The Switch Is On The End Of The Lamp
- Dimming: Non Dimmable
- Total Lumens: 1200LM
- Color Temperatures: 3500K/4000K/5000K
- Color Rendering Index: CRI ≥ 80
- Beam Angle: 120°
- Rated life: 50,000 Hrs
- Compatible with fluorescent Emergency Ballast
- Compatible with fluorescent Dimming Ballast
- Compatible with 90% of electronic ballasts (see the list)

Applications:

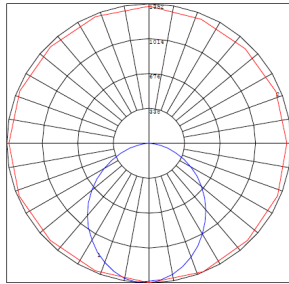
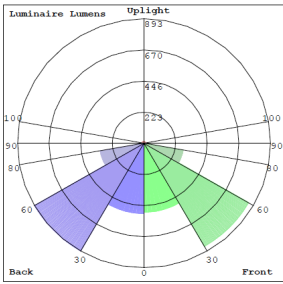
- Direct Fit 4 T8 LED tubes do not burn out easily and provide bright and even lighting to schools, office spaces, retail stores and storage rooms.

Other Models:

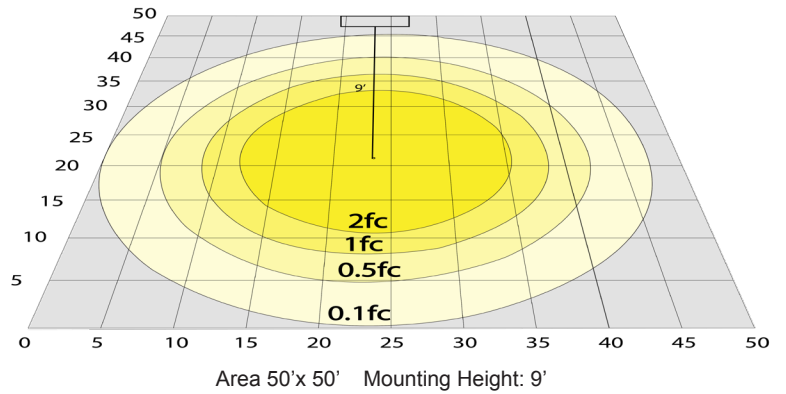
- 8W | 1200LM | T8-EZX-MCT-GS-2FT-8W-F



Photometrics: T8-EZX-MCT-GS-2FT-8W-C



BUG Rating: B2-U2-G1



Other Views:



Close-up View



Front View



Socket View



CCT Switch

Performance Table: T8-EZX-MCT-GS-2FT-8W-C

MODEL NO.	Wattage	Voltage	Lumens	Color Temp.	BUG Rating	LPW
T8-EZX-MCT-GS-2FT-8W-C	8W	120-277V	1200LM	3500K 4000K 5000K	B2-U2-G1	125

Sample Ordering

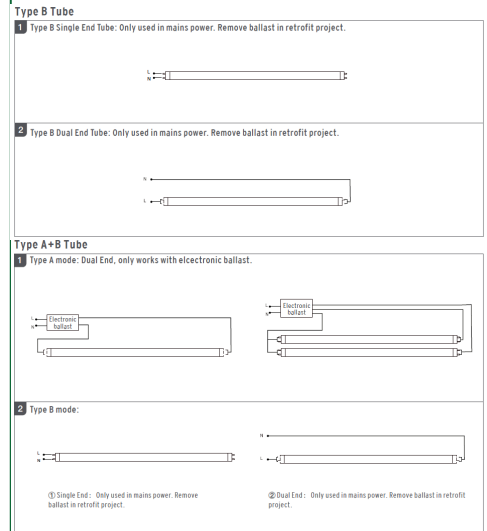
Model	Color Temp.	Material	Size	Watt	Lens	
T8	EZX	MCT	GS	2FT	8W	C

Example:

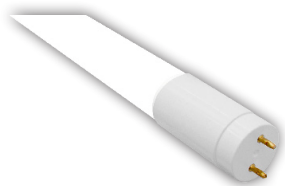
1.T8-EZX-MCT-GS-2FT-8W-C

(FOR 8W 3500K T8 2FT TUBE LAMP 120-277V)

WIRING DIAGRAM:



Other Models: T8-EZX-MCT-GS-2FT-8W-F (Frosted Model)



Close-up View



Front View



Socket View



CCT Switch



Compatible Ballasts List:

Brand	Model No.	Start Type	Brand	Model No.	Start Type
ACT	ACT3P32ISUNVE	Instant Start	GE	GE-232-MV-N	Instant Start
ACT	ACT4P32ISUNVE	Instant Start	GE	GE332MAX-G-H	Instant Start
DAMAR	1688B	Instant Start	GE	GE332MAX-G-N	Instant Start
DAMAR	1688D	Instant Start	GE	GE332MAX-G-N-DIYB	Instant Start
DAMAR	3654C	Instant Start	GE	GE332MAXP-H-42T	Instant Start
EIKO	PM-2X32T8-UNV-IS	Instant Start	GE	GE332MAXP-L/ULTRA	Instant Start
EIKO	PM-3X32T8-UNV-IS	Instant Start	GE	GE332MAXP-N/ULTRA	Instant Start
EIKO	PM-3X32T8-UNV-IS-H	Instant Start	GE	GE432MAX-G-N	Instant Start
EIKO	PM-4X32T8-UNV-IS	Instant Start	GE	GE432MAXG-N-DIYL	Instant Start
ESPEN	VE232MVHIPL	Instant Start	GE	GE432MAX-L/ULtra	Instant Start
ESPEN	VE2P32MVHIPE 11068	Instant Start	GE	GE432MAX-N/ULtra	Instant Start
ESPEN	VE2P32MVHIPHE 11069	Instant Start	GE	GE432MAXP347-H	Instant Start
ESPEN	VE332MVHIPL	Instant Start	GE	GE432MAXP347-N	Instant Start
ESPEN	VE3P32MVHIPE 11070	Instant Start	GE	GE432MAXPH/ULTRA	Instant Start
ESPEN	VE3P32MVHIPL 11056	Instant Start	GE	GE432MAXP-H/ULTRA	Instant Start
ESPEN	VE432120MIP	Instant Start	GE	GE432MAXP-L/ULTRA	Instant Start
ESPEN	VE4P32MVHIPE 11072	Instant Start	GE	GE132-MVPS-H	Programmed Start
ESPEN	VE4P32MVHIPHE 11073	Instant Start	GE	GE-132-MV-PS-L	Programmed Start
ESPEN	VE4P32MVHIPL 11057	Instant Start	GE	GE232-MVPS-L	Programmed Start
ESPEN	VEL100BN-4C	Instant Start	GE	GE232-MVPS-N	Programmed Start
ESPEN	VEL30BN-2C-10V	Instant Start/ Dimming	GE	GE232-MV-PS-N	Programmed Start
ESPEN	VEL30BN-2C-10V(White)	Instant Start/ Dimming	GE	GE-232-MVPS-XL	Programmed Start
ESPEN	VEL50BN-2C	Instant Start	GE	GE240RES120-4PK	Programmed Start
ESPEN	VE2P32MVHPPE 11080	Programmed Start	GE	GE240RES120-B	Programmed Start
ESPEN	VE4P32MVHPPE 11086	Programmed Start	GE	GE332-MVPS-L	Programmed Start
FULHAM	FH12-UNV-1400L-CEC	Emergency	GE	GE332-MVPS-XL	Programmed Start
GE	GE132MAX-G-N	Instant Start	HALCO	EP232IS/MV/HE	Instant Start
GE	GE132MAX-H/ULtra	Instant Start	HALCO	EP332IS/L/MV/HE	Instant Start
GE	GE132MAXP-L/ULTRA	Instant Start	HALCO	EP332IS/MV/HE	Instant Start
GE	GE232-120RES-B	Instant Start	HALCO	EP432IS/L/MV/HE	Instant Start
GE	GE232MAX-G-N	Instant Start	HOWARD	EP2/32IS/MV/MC/HE	Instant Start
GE	GE232MAX-G-N-DIYB	Instant Start	HOWARD	EP4/32IS/MV/MC/HE	Instant Start
GE	GE232MAX-L/ULTRA	Instant Start	HOWARD	EPH4/32IS/MV/SC/HE	Instant Start
GE	GE232MAXP-L/ULTRA	Instant Start	HOWARD	EPL2/32IS/MV/MC/HE	Instant Start



Brand	Model No.	Start Type	Brand	Model No.	Start Type
HOWARD	EPL3/32IS/MV/SC/HE	Instant Start	PHILIPS ADVANCE	IOPA-2P32-LW-N	Instant Start
KEYSTONE	KT-EMRG-1400	Emergency	PHILIPS ADVANCE	IOPA-2P32-N	Instant Start
KEYSTONE	KT-EMRG-500-SL	Emergency	PHILIPS ADVANCE	IOPA-3P32-LW-N	Instant Start
KEYSTONE	KTEB-232RIS-1-TP-SL/J	Instant Start	PHILIPS ADVANCE	IOPA-3P32-LW-N-SC	Instant Start
KEYSTONE	KTEB-232-UV-IS-N-P	Instant Start	PHILIPS ADVANCE	IOPA-3P32-N	Instant Start
KEYSTONE	KTEB-332-UV-IS-N-P	Instant Start	PHILIPS ADVANCE	IOPA-4P32-LW-N	Instant Start
KEYSTONE	KTEB-432RIS-1-TP-SL	Instant Start	PHILIPS ADVANCE	IOPA-4P32-N	Instant Start
KEYSTONE	KTEB-432-UV-IS-N-P	Instant Start	PHILIPS ADVANCE	REB-4P32-SC	Instant Start
OSRAM SYLVANIA	QHE 1X32T8/UNV ISL-SC	Instant Start	PHILIPS ADVANCE	VEL-4P32-SC	Instant Start
OSRAM SYLVANIA	QHE 1X32T8/UNV ISN-SC	Instant Start	PHILIPS ADVANCE	ICN-2S40-N	Programmed Start
OSRAM SYLVANIA	QHE 2X32T8/UNV ISL-SC-1	Instant Start	PHILIPS ADVANCE	IOP-2PSP32-LW-N	Programmed Start
OSRAM SYLVANIA	QHE 3X32T8/UNV HT-SC	Instant Start	PHILIPS ADVANCE	IOP-2PSP32-N	Programmed Start
OSRAM SYLVANIA	QHE 3XLEDT8/UNV-ISN-SC	Instant Start	PHILIPS ADVANCE	IOP-4PSP32-LW-SC	Programmed Start
OSRAM SYLVANIA	QHE 4X32T8/UNV ISN-SC	Instant Start	PHILIPS ADVANCE	IOP-4PSP32-SC	Programmed Start
OSRAM SYLVANIA	QHE 4XLEDT8/UNV-ISN-SC	Instant Start	PHILIPS ADVANCE	IZT-2S32-SC	Programmed Start
OSRAM SYLVANIA	QTP 2X59T8/UNV ISN-SC	Instant Start	PHILIPS ADVANCE	RELB-2S40-N	Programmed Start
OSRAM SYLVANIA	QTP 3X32T8/UNV ISN-SC	Instant Start	PHILIPS ADVANCE	REZ-2S32-SC	Programmed Start
OSRAM SYLVANIA	QTP 4X32T8/UNV ISN-SC	Instant Start	PHILIPS ADVANCE	REZ-3S32-SC	Programmed Start
OSRAM SYLVANIA	QHE 2X32T8/UNV PSN-MC	Programmed Start	PLUSRITE	BAF232IS/MV	Instant Start
OSRAM SYLVANIA	QHE 2X32T8/UNV PSX-MC	Programmed Start	PLUSRITE	BAF332IS/MV	Instant Start
OSRAM SYLVANIA	QHE 3X32T8/UNV-PSN-SC	Programmed Start	PLUSRITE	BAF432IS/MV	Instant Start
OSRAM SYLVANIA	QHE 4X32T8/UNV PSX-SC	Programmed Start	PLUSRITE	BAF232PS/MV	Programmed Start
OSRAM SYLVANIA	QTP 2X32T8/UNV DIM-TC	Programmed Start	ROBERTSON	IEA432T8120N 3P20135	Instant Start
OSRAM SYLVANIA	QTP 2X32T8/UNV ISN-SC	Programmed Start	SUNLITE	40155-SU SB/232/MV	Instant Start
PES	PES120ET5-E120T2	Instant Start	ULTRASAVE	UT 232347	Instant Start
PHILIPS ADVANCE	ICN-1P32-N	Instant Start	UNIVERSAL	B232IUNV-C	Instant Start
PHILIPS ADVANCE	ICN-2M32-MC	Instant Start	UNIVERSAL	B232IUNVEL-N	Instant Start
PHILIPS ADVANCE	ICN-2P32-N	Instant Start	UNIVERSAL	B232IUNVHEH-A	Instant Start
PHILIPS ADVANCE	ICN-3P32-N	Instant Start	UNIVERSAL	B232IUNVHP-N	Instant Start
PHILIPS ADVANCE	ICN-4P32-N	Instant Start	UNIVERSAL	B332IUNVEL-A	Instant Start
PHILIPS ADVANCE	IOP-2P32-HL-N	Instant Start	UNIVERSAL	B332IUNVHE-A	Instant Start
PHILIPS ADVANCE	IOP-2P32-LW-N	Instant Start	UNIVERSAL	B332IUNVHP-A	Instant Start
PHILIPS ADVANCE	IOP-2P32-N	Instant Start	UNIVERSAL	B432IUNVHE-A	Instant Start
PHILIPS ADVANCE	IOP-2P59-N	Instant Start	UNIVERSAL	B432IUNVHP-A	Instant Start
PHILIPS ADVANCE	IOPA-1P32-LW-N	Instant Start	UNIVERSAL	B232PUNVHE-B	Programmed Start
PHILIPS ADVANCE	IOPA-1P32-N	Instant Start	UNIVERSAL	B432PUNVHE-A	Programmed Start

