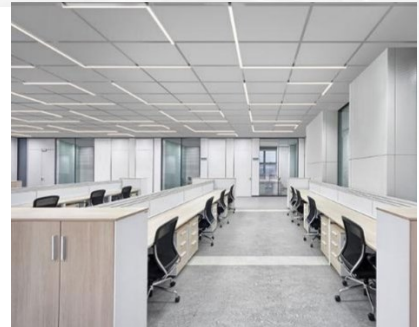




INDUSTRIAL AND COMMERCIAL
LIGHTING MFR SINCE 2003

PROJECT NAME _____
ITEM # _____
FIXTURE SCHEDULE _____
NOTES _____

T-Grid LED Linear Series



WareLight's T-Grid LED linear fixtures allow you to tailor your lighting experience with ease. Engineered for convenience, our T-Grid Linear Flat Lens Fixture seamlessly integrates into standard 15/16" T-grid ceilings, making installation a breeze. Achieve the perfect ambiance for any setting using the adjustable color temperature and wattage feature. Its slim profile and minimalist design blend effortlessly with any interior decor, providing a seamless lighting solution for commercial and residential spaces alike.

Specifications

CRI	>82	Ratings & Certifications	UL/cULus listed, Damp Location Rated
Light Source	Integrated LED	Beam Angle	95°
Dimmable	0-10v	Linkable	Continuous run and custom pattern
Color Temperature	Selectable 3500K - 4000K - 5000K	Mounting Options	Surface, suspended or recessed
Wattage	Selectable 5W-20W	Operating Temperature	-30 ~ 40 °C (-22°F to +104°F)
LPW	115/w	Lumens	500-2,300lm
Voltage	120-277v	Lens	Flat/Milky Lens
Finish	White	Warranty	5 Years





INDUSTRIAL AND COMMERCIAL
LIGHTING MFR SINCE 2003

PROJECT NAME _____
ITEM # _____
FIXTURE SCHEDULE _____
NOTES _____

Order Information

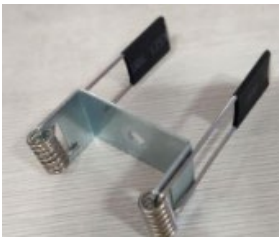
T-Grid LED Linear Series				Example: SL-BEAMLED2-10W-3CT-DMV-WH-RFK		
Series	Length	Wattage	Color Temperature	Voltage	Finish	Accessories
SL-BEAMLED	2 2 Foot	10W 5W/7.5W/10W	3CT 35K/40K/50K	DMV Universal 120-277V	WH White	RFK Recessed Flange Kit
	2L 2' x 2' L Corner					CanopyKit 10 FT Aircraft Cable
	4 4 Foot	20W 10W/15W/20W				CoverKit Junction Box and Driver Cover

*Accessories Sold Separately

Recessed Flange Kit (RFK)

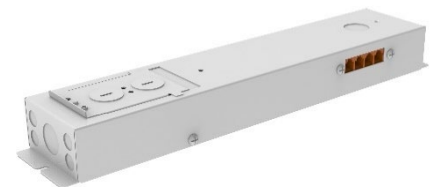
10FT Aircraft Cable (CanopyKit)

Junction Box & Driver Cover(CoverKit)



40W Driver (SL-BEAMLED-40W-Driver)

- External driver needed. Do not exceed the maximum wattage of the driver.
- Calculate the total wattage and pick adequate driver(s) as power supply.
- Includes Grid Clips.
- Up to 4 Connections.



Performance Chart

Model Number	Size	Wattage	Lumens	Efficacy	CRI
SL-BEAMLED2-10W-3CT-DMV-WH	2 FT	5W/7.5W/10W	500-1,150	115 LM/W	>82
SL-BEAMLED2L-40W-3CT-DMV-WH	2' x 2'	5W/7.5W/10W	1,000-2,300	115 LM/W	>82
SL-BEAMLED4-20W-3CT-DMV-WH	4 FT	10W/15W/20W	1,000-2,300	115 LM/W	>82

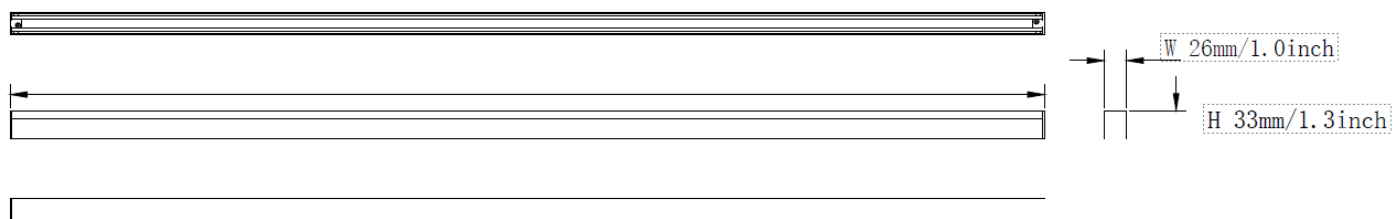


INDUSTRIAL AND COMMERCIAL
LIGHTING MFR SINCE 2003

PROJECT NAME _____
ITEM # _____
FIXTURE SCHEDULE _____
NOTES _____

Dimensions

Item	Length	Width	Height	Weight
SL-BEAMLED2-10W-3CT-DMV-WH	24.0"	1.0"	1.3"	1.76 lbs.
SL-BEAMLED2L-40W-3CT-DMV-WH	24.0"x 25.0"	1.0"	1.3"	3.30 lbs.
SL-BEAMLED4-20W-3CT-DMV-WH	48.0"	1.0"	1.3"	2.09 lbs.



2FT-L-610mm/24inch
4FT-L-1220mm/48inch

