

# SCLT SERIES

COMMERCIAL INDOOR LIGHTING

# WESTGATE

THE FUTURE IS HERE...AND IT'S QUITE BRIGHT!

SCLT-4FT-40W-35K-D  
SCLT-4FT-40W-40K-D  
SCLT-4FT-40W-50K-D

LED SUSPENDED DOWN LIGHT WITH TRANSLUCENT LENS

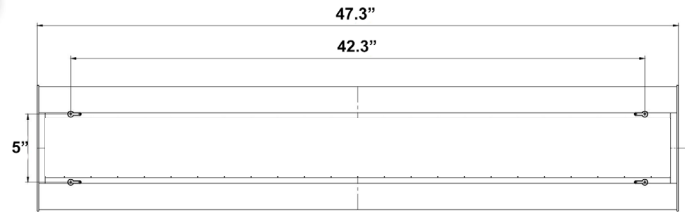


Customer Name: \_\_\_\_\_

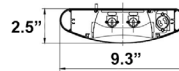
Project Name: \_\_\_\_\_

Note: \_\_\_\_\_

Type: \_\_\_\_\_



Selection:



5" H x 2 1/2" D x 47.3" W

Ideal for Storage rooms, Offices Conference rooms, Retail Reception areas, Hallways Education facilities

## Features

- Lens: Translucent Lens
- Housing: Anodized Aluminum
- 5-Year Warranty
- Rated Life: 50,000 Hrs

## Technical Specifications

### Electrical:

- Voltage: 120-277V AC 60Hz
- Wattage: 40W
- Power Factor: >0.95
- Efficacy: 115 LPW
- THD: <20%

### Mechanical:

- Housing: Anodized Aluminum
- Polycarbonate End Caps
- Finish: Powder Coated Silver
- Ambient Temperature: -22°F to +104°F
- 5-year Warranty

### Lighting:

- Lens: Translucent Lens
- High Quality LED Chips provide High Efficiency, Heat Dissipation, Stability, and Lumen Maintenance
- Dimmable: 0~10V Dimmable
- Lumens Range: 4600LM
- Color Temperatures: 3500K/ 4000K/ 5000K
- Color Rendering Index: CRI ≥ 80
- Rated Life: 50,000 Hrs

### Applications:

- Storage rooms
- Offices
- Conference rooms
- Retail
- Reception Areas
- Hallways
- Education Facilities

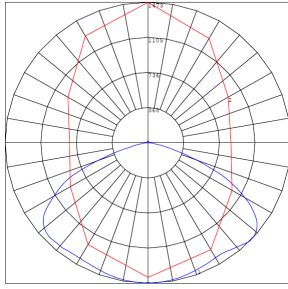
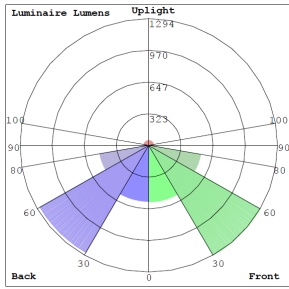


Phone: (877) 805-2252 | Fax: (877) 805-2252  
www.westgatemfg.com | www.westgatecontrols.co

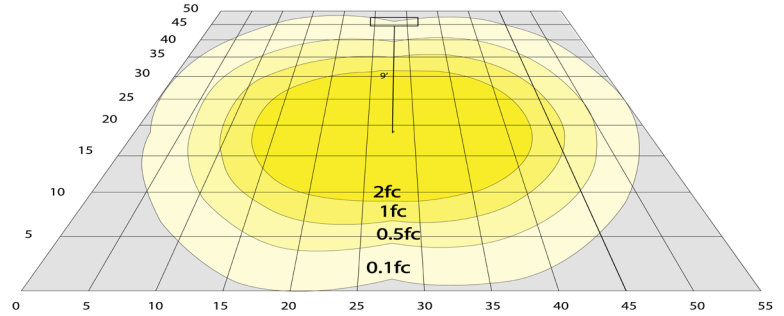


WG-ZA-Z7-2Z

## Photometrics: SCLT-4FT-40W



BUG Rating: B2-U2-G1



Area 50'x 55' Mounting Height: 9'

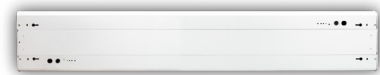
## Other Views:



Side View



Front View



Back View

## Performance Table: SCLT-4FT-40W

MODEL NO.	Wattage	Voltage	Lumens	Color Temp.	BUG Rating	LPW
SCLT-4FT-40W-35K-D	40W	120~277V	4600LM	3500K	B2-U2-G1	115
SCLT-4FT-40W-40K-D				4000K		
SCLT-4FT-40W-50K-D				5000K		

## Sample Ordering

Model Size Watt Color Temp. Dimming

SCLT - 4FT - 40W -  -

35K = 3500K  
40K = 4000K  
50K = 5000K

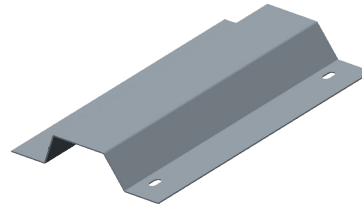
## Accessory:

Blank = No Option For Accessories  
SCLP-CB= COUPLING BRACKET

## Factory-Installed Options:

Blank = No Option For Accessories  
OPT-EM-SL1INT = EMERGENCY BACKUP INTERNAL BATTERY  
OPT-SCL-LMT-35K= ADDITIONAL LED MODULAR TUBE, 20W, 3500K  
OPT-SCL-LMT-40K = ADDITIONAL LED MODULAR TUBE, 20W, 4000K  
OPT-SCL-LMT-50K = ADDITIONAL LED MODULAR TUBE, 20W, 5000K  
OPT-CLR-100 = COLOR PAINT  
WEC-3RC = REMOTE CONTROL  
OPT-SEN-2US = ULTRASONIC BI-LEVEL DIMMING (REMOTE NOT NEEDED)

## ACCESSORY:



SCLP-CB

## FACTORY-INSTALLED OPTIONS:



OPT-EM-SL1INT



OPT-SEN-2US



WEC-3RC

## Example:

- SCLT-4FT-40W-50K-D
- SCLT-4FT-40W-50K-D  
OPT-EM-SL1INT

(FOR SCLT 40W 5000K FIXTURE 120-277V)

(FOR SCLT 40W 5000K FIXTURE 120-277V)  
(EMERGENCY BACKUP INTERNAL BATTERY)

