



# LED Linear Highbay Light

## Product Description

LED SION Linear Highbay use best die-casting aluminum housing, anti-corrosion painting design. High-performance Replace 300-1000W MH/HPS.

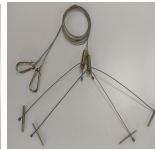
## Advantage

- UL certificate.
- Input voltage 120-277VAC.
- No UV or IR in the beam.
- Easy to install and operate.
- Energy saving, long lifespan.
- Light is soft and uniform, safe to eyes.
- Instant start, NO flickering, NO humming.
- Green and eco-friendly without mercury.
- Output constant current lever can be adjusted through output cable with 1-10V.

\*The product can not be connected to a dimming device when it's equipped with Motion Sensor.



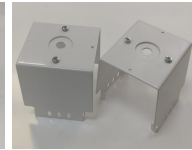
Type A  
(Default)



Type B



Type C



Type D

## Applications

Warehouse, factory and workshops; Exhibition hall and supermarkets, etc





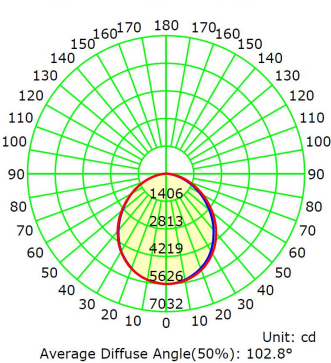
# LED Linear Highbay Light

## Specifications

Model No.	LS-LHBV2-110WBFP2C1-abd	LS-LHBV2-165WBFP2C1-abd	LS-LHBV2-220WBFP2C1-abd	LS-LHBV2-300WBFP2C1-abd
Input Power	110W	165W	220W	300W
Lumen	14300-15000LM	21600-22800LM	28200-29700LM	40000-43000LM
Lumen Efficacy	136-142LM/W	135-142LM/W	133-140LM/W	135-143LM/W
Color Temperature	4000K, 4500K, 5000K, 5700K			
CRI	>80			
Viewing Angle	100 Degree			
Input Voltage	120-277VAC 50/60Hz			
PF	≥0.9			
THD	≤20%			
Driver Brand	China brand driver			
Optional Accessory	Motion Sensor, PIR Sensor			
LED Brand	Lumileds			
LED Type	SMD2835 (0.5W)			
LED QTY	330 PCS	504 PCS	660 PCS	960PCS
Housing	Aluminum Alloy			
Housing Color	White			
Waterproof Rating	DAMP			
Operating Temperature	-40°C TO 45°C			
Operating Humidity	20%-90% RH			
Storage Temperature	-40°C TO 80°C			
Storage Humidity	10%-95% RH			
Warranty Time	5 Years			
Option Note	a= Housing colors, WH=White, b=Sensor, MS or PS or Blank (Motion Sensor or PIR Sensor) d= CCT, 40=4000K, 45=4500K, 50=5000K, 57=5700K			

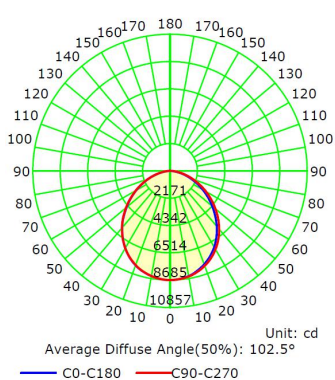
## Photometrics

Luminous Intensity Distribution Curve



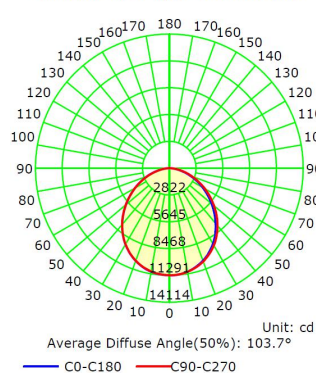
110W

Luminous Intensity Distribution Curve



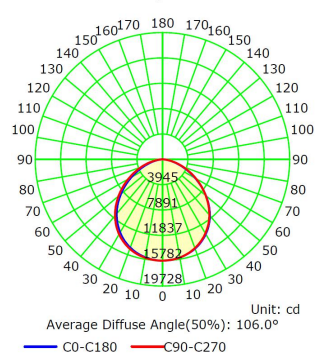
165W

Luminous Intensity Distribution Curve



220W

Luminous Intensity Distribution Curve



300W



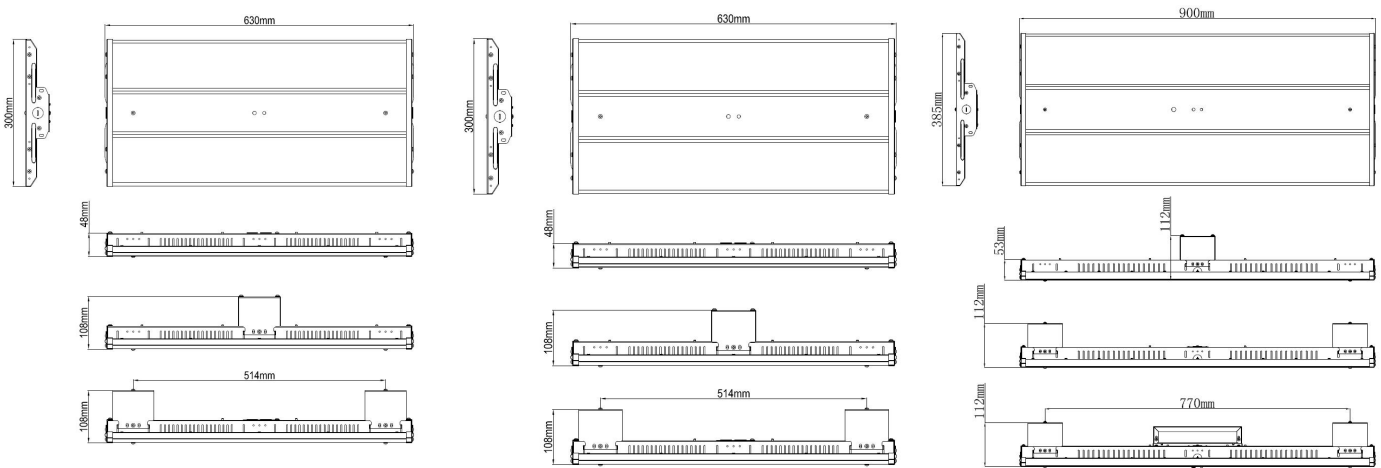
# LED Linear Highbay Light

## Projected LED Lumen Maintenance

Operating hours	0	25000	50000
Lumen maintenance factor	1	0.91	0.8

Data references the extrapolated performance projections for the Linear Highbay LED platform in a 25°C ambient, based on 10,000 hours of LED testing (tested per IESNA LM-80-08 and projected per IESNA TM-21-11).

## Dimensions



110W

165W/220W

300W

## Notice for User

Please turn off power before install or change assembly parts.  
 The input voltage and lamps should be matched, after connecting the power line,  
 Please make sure the wiring section is insulated.  
 No-professionals, must not install and disassemble the lamps.

## After-sale Service

The product refers to electricians knowledge. Please don't disassemble it by yourself.  
 If any quality problem happens, please contact the factory for warranty details.  
 NOTE: Actual performance may differ as a result of end-user environment and application. All values are without notice.