

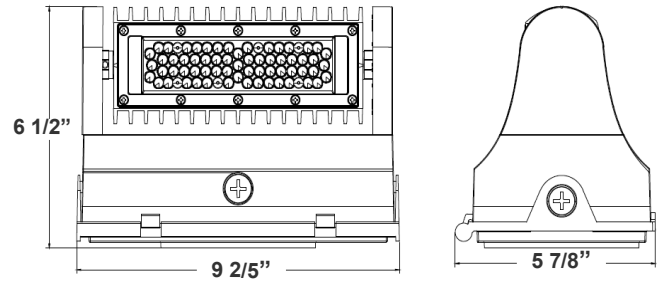
LW360 SERIES Outdoor Lighting

LW360-40W-30K-G2
LW360-40W-40K-G2
LW360-40W-50K-G2
LED 360° ROTATABLE WALL PACK

Customer Name: _____
Project Name: _____
Note: _____ | Type: _____



Selection:



6 1/2"(H) x 9 2/5"(W) x 5 7/8"(L)

Ideal for general site lighting, alleys, loading docks, doorway, pathway, and parking areas.

Features

- Three 1/2" Threaded Knockouts: 1 Bottom. 1 On Each Side
- TIR Optic Lens - TYPE II
- Die-cast aluminum housing with powder coat finish (Dark Bronze or White)
- 7-Year Warranty

Technical Specifications

Electrical:

- Voltage: 120-277VAC 60Hz
- Wattage: 40W
- Power Factor: >0.95
- Efficacy: 130 LPW

Mechanical:

- Die-Cast Aluminum With Powder Coat Finish (Dark Bronze)
- TIR Optic Lens - TYPE II
- Includes Mounting Hardware
- Operating Temperature: -40°F -104°F
- Five 1/2" Threaded Knockouts: 1 on Each Side, 1 on The Back
- 7-Year Warranty
- IP65, Suitable for Wet Locations
- Light Head rotates 350°

Lighting:

- Chip: Lumileds LEDs
- TIR Optic Lens - TYPE II
- Dimmable: 0~10V Dimming
- Total Lumens: 5200LM
- Color Temperatures: 3000K/ 4000K/ 5000K
- Color Rendering Index: CRI ≥ 80
- Beam Angle: 60°
- Rated life: 70,000 Hrs

Applications:

- General site Lighting
- Alleys
- Loading docks
- Doorways
- Pathways
- Parking areas

Other Models:

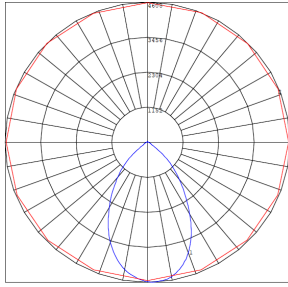
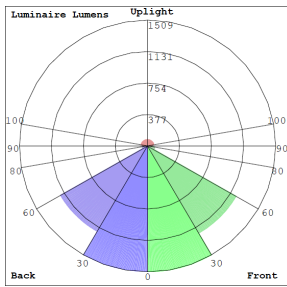
• 25W | 3250LM | LW360-25W-30K-G2 • 60W | 8100LM | LW360-60W-30K-G2 • 80W | 10400LM | LW360-80W-30K-G2 • 120W | 15600LM | LW360-120W-30K-G2
• 25W | 3250LM | LW360-25W-40K-G2 • 60W | 8100LM | LW360-60W-40K-G2 • 80W | 10400LM | LW360-80W-40K-G2 • 120W | 15600LM | LW360-120W-40K-G2
• 25W | 3250LM | LW360-25W-50K-G2 • 60W | 8100LM | LW360-60W-50K-G2 • 80W | 10400LM | LW360-80W-50K-G2 • 120W | 15600LM | LW360-120W-50K-G2



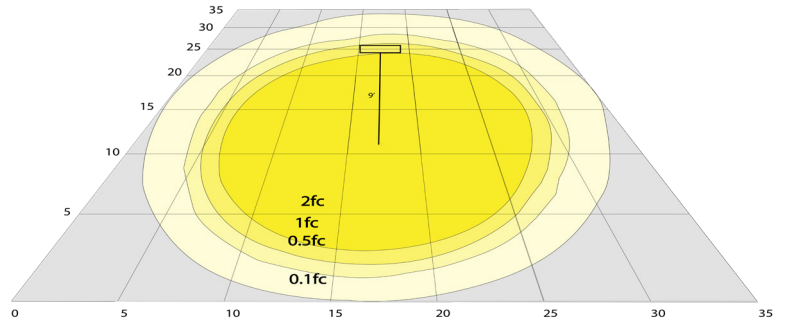
Phone: (877) 805-2252 | Fax: (877) 805-2252
www.westgatemfg.com | www.westgatecontrols.co



Photometrics: LW360-40W



BUG Rating: B3-U3-G1



Area 35'x 35' Mounting Height: 9'

Other Views:



Side View



Front View



Back View

Performance Table: LW360-40W

MODEL NO.	Wattage	Voltage	Lumens	Color Temp.	BUG Rating	LPW
LW360-40W-30K-G2	40W	120~277V	5200LM	3000K	B3-U3-G1	130
LW360-40W-40K-G2	40W	120~277V	5200LM	4000K	B3-U3-G1	130
LW360-40W-50K-G2	40W	120~277V	5200LM	5000K	B3-U3-G1	130

Sample Ordering

Model	Wattage	Color Temp.	Series
LW360	40W	3000K 4000K 5000K	G2

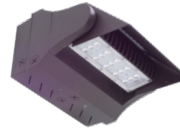
Accessory:

Blank = No Option For Accessories
LW360-SH1= SHROUD FOR LW360 SERIES, BRONZE FINISH

Factory-Installed Options:

Blank = No Option For Accessories
OPT-EM-LW360= EMERGENCY BACKUP BATTERY, BACK BOX
OPT-SEN-LW360-3MRLV-5= PROGRAMMABLE MICROWAVE BI-LEVEL
OPT-CLR-85= COLOR PAINT
OPT-LW360-PC-B = PHOTOCELL 120-277V
WEC-8RC = OPTIONAL REMOTE

ACCESSORY:



LW360-SH1
SHOWN WITH EM BOX

FACTORY-INSTALLED OPTIONS:



OPT-EM-LW360
SHOWN WITH MOTION SENSOR



OPT-SEN-LW360-3MRLV-5



WEC-8RC



OPT-LW360-PC-B



OPT-CLR-85

Example:

- LW360-40W-30K-G2
- LW360-40W-30K-G2
LW360-SH1
- LW360-40W-30K-G2
LW360-SH1
OPT-EM-LW360

(FOR LW360 40W 3000K FIXTURE 120-277V)

(FOR LW360 40W 3000K FIXTURE 120-277V)
(SHROUD FOR LW360 SERIES, BRONZE FINISH)

(FOR LW360 40W 3000K FIXTURE 120-277V)
(SHROUD FOR LW360 SERIES, BRONZE FINISH)
(EMERGENCY BACKUP BATTERY, BACK BOX)

