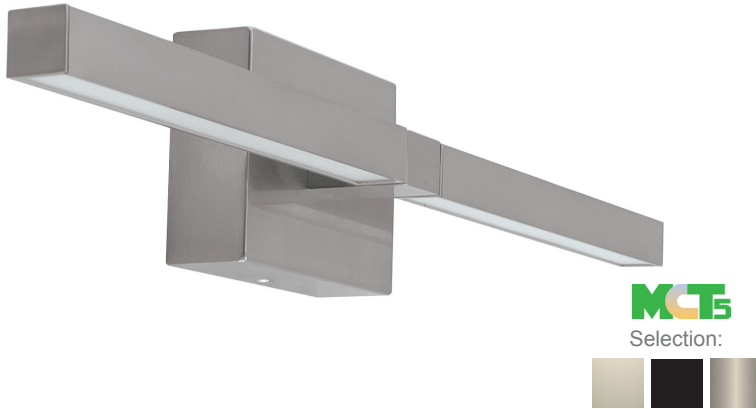
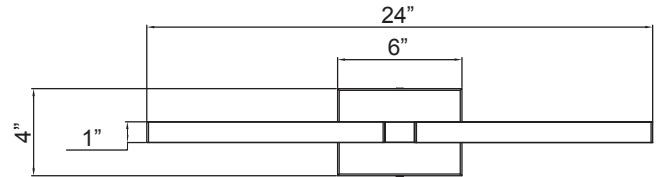


LVS SERIES Indoor Lighting

LVS-24-MCT5-BN
SLIM ROTATABLE VANITY LIGHTS AND SCONCES



Customer Name: _____
Project Name: _____
Note: _____ | Type: _____



24"(W) x 4"(H)

This is LED Vanity Model Ideal for office, Retail Store, Showroom, Residential applications and Damp environment lighting applications.

Features

- Corrosion and Heat Resistance Powder Coated
- Finish: Brushed Nickel
- Durable Die-cast Aluminum
- Lens Type: Polycarbonate Lens
- MCT: Multi Color Temperature (Selectable Switch Inside Fixture)

Technical Specifications

Electrical:

- Voltage: 120V AC 50/60Hz
- Wattage: 20W
- Power Factor: >0.95
- Total Harmonic Distortion: ≤ 20 %
- Efficacy: 70 LPW

Mechanical:

- Corrosion and Heat Resistance Powder Coated
- Finish: Brushed Nickel
- Durable Die-cast Aluminum
- 180-Degree Rotatable Light Bars
- Operating Temperature: -22°F to 104°F
- IP20, Suitable for Damp Location
- 5-Year Warranty

Lighting:

- Multi-CCT(Selectable Switch Inside Fixture)
- Lens Type: Polycarbonate Lens
- Dimming: TRIAC Dimming (Dimmable Down to 5% Compatible With Traic and ELV Dimmers)
- Total Lumens: 1400LM
- Color Temperatures: 2700K/ 3000K/3500K/4000K/5000K
- Color Rendering Index: CRI ≥ 90
- 50,000 Hours Rated Life
- Beam Angle: 104.8°(H) x 100.5°(V)

Applications:

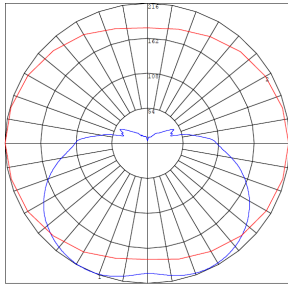
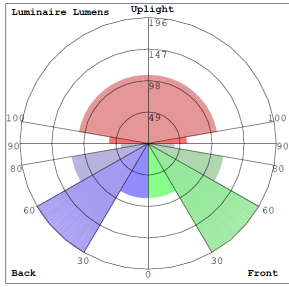
- Ideal for Office, Retail Store, Showroom, Residential Applications and Damp Environment Lighting Applications

Other Models:

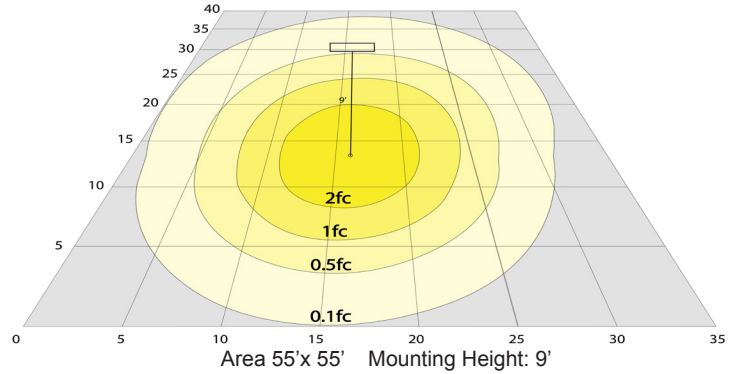
- 20W | 1400LM | LVS-24-MCT5-BN
- 20W | 1400LM | LVS-24-MCT5-BB



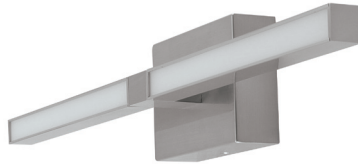
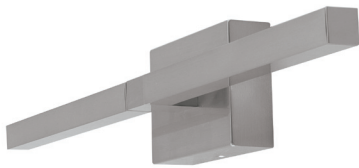
Photometrics: LVS-24-MCT5-BN



BUD Rating: B1-U3-G1



Other Views:



Performance Table: LVS-24-MCT5-BN

MODEL NO.	Wattage	Voltage	Lumens	Color Temp.	BUG Rating	LPW
LVS-24-MCT5-BN	20W	120V	1400LM	2700K 3000K 3500K 4000K 5000K	B1-U3-G1	70

Sample Ordering

Model Size Color Temp. Housing

LVS - 24 - MCT5 - BN

Example:

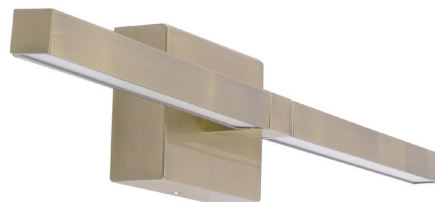
1. LVS-24-MCT5-BN

(For LVS 20W MCT5 fixture 120V)

Other Model:



LVS-24-MCT5-BN



LVS-24-MCT5-BB