

# LED PENDANT LIGHT, MULTI COL

ITEM: LCFN-MCT5

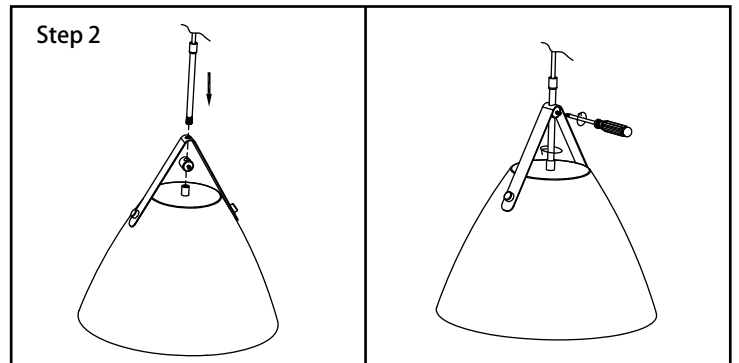
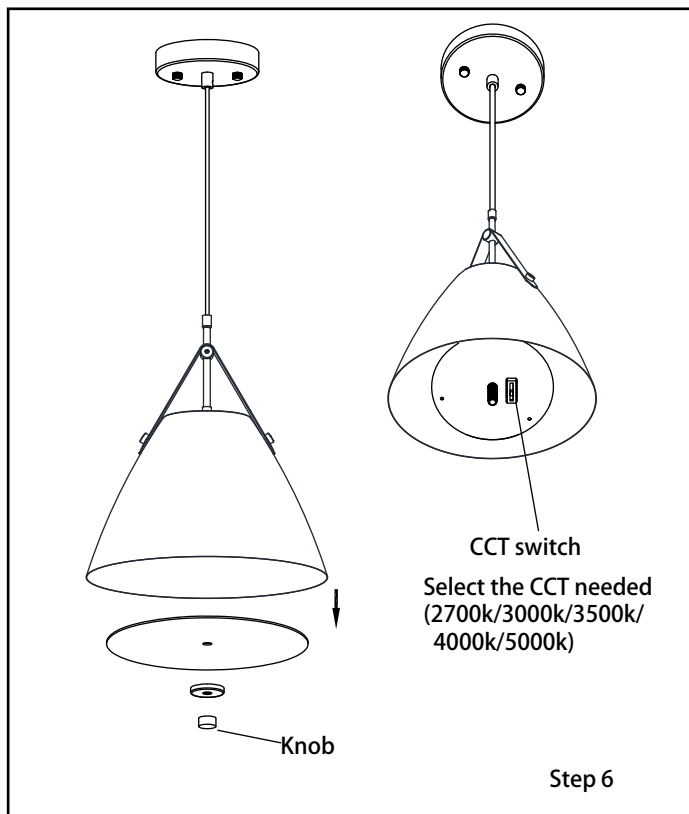
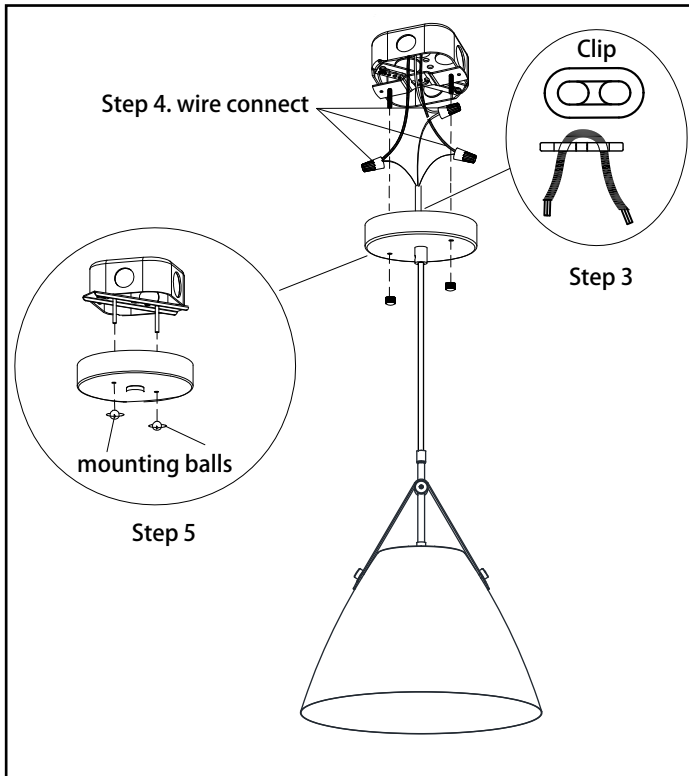
# WESTGATE

www.westgatemfg.com

Please consult a qualified electrician for hanging fixture and wiring.

**CAUTION:** Before starting the installation, disconnect removing the fuse at the fuse box. Carefully unpack and identify all parts before assembly.

**CAUTION:** Always disconnect power at the main electrical panel before installation.



Step 1. Disconnect power at the main electrical panel.

Step 2. Screw the rod to the pendant light.

Step 3. Adjust the wire length as needed, then, secure the suspension wire by the clip.

Step 4. Connect supply wires to fixture wires and insulate with proper size wire nuts.

Connect incoming ground wire (green or bare) to fixture ground wire (green or bare). Connect incoming common (white) wire to fixture white wire. Connect incoming hot (typically black) wire to fixture black wire. Please reference the following wiring guide.

### Wiring guide

WHITE (NEUTRAL) SUPPLY WIRE	CONNECTOR	WHITE FIXTURE WIRE
BLACK (HOT) SUPPLY WIRE	CONNECTOR	BLACK FIXTURE WIRE
GREEN/YELLOW GROUND WIRE FROM SUPPLY	CONNECTOR	GREEN/YELLOW FIXTURE GROUND

Step 5. Screw the mounting balls on the screws from the mounting plate.

Step 6. Unscrew the knob and remove the lens. Find the CCT switch on the PCB board and select the CCT needed. (with 2700k/3000k/3500k/4000k/5000k for selection). Then, put the lens back on the fixture, screw and secure the knob.

Step 7. Installation finished, connect the power and turn on the lights.