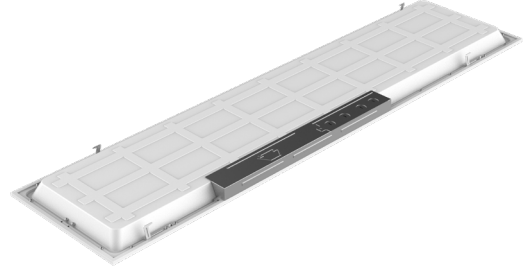


# KT-BPLED30-14-8XX-VDIM-P /G2

## BACKLIT LED PANEL LIGHT

### DESCRIPTION

1' x 4' Backlit LED Panel Light | 30W | 120–277V Input | 0–10V Dimming



**5 YEAR**  
WARRANTY

### PRODUCT FEATURES

- Aluminum frame featuring stepped-edge design detail and gloss white paint for improved aesthetics
- Backlit style design; fits standard T-grid ceilings
- Suitable for recessed- or surface-mount (with optional accessories)\*
- Construction features precise optical lenses over each individual LED, offering optimal light diffusion and consistent surface illumination, with no risk of yellowing over product lifetime
- Suitable for damp locations
- Powered by Keystone 0–10V dimmable LED driver with built-in junction box
- Compatible with Keystone SmartSafe LED emergency backup
- Over 50% energy savings compared to traditional fluorescent troffers
- Operating temperature range: –20°C/–4°F to 40°C/104°F
- Available with Keystone’s Smart Loop Bluetooth™ mesh wireless system, with features such as high-end trim, grouping, occupancy/vacancy sensing, and scheduling.

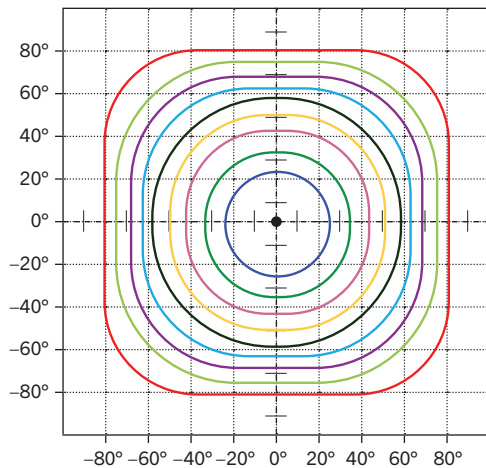
\* For use in non-fire rated installations only

### PERFORMANCE SPECIFICATIONS

| Catalog Number               | Input Voltage | Wattage | Color Temperature | Lumen Output | Efficacy | CRI | Power Factor | UGR | Lifetime     |
|------------------------------|---------------|---------|-------------------|--------------|----------|-----|--------------|-----|--------------|
| KT-BPLED30-14-835-VDIM-P /G2 | 120–277V      | 30W     | 3500K             | 3750         | 125 lm/W | >80 | >0.9         | <19 | 50,000 Hours |
| KT-BPLED30-14-840-VDIM-P /G2 | 120–277V      | 30W     | 4000K             | 3750         | 125 lm/W | >80 | >0.9         | <19 | 50,000 Hours |
| KT-BPLED30-14-850-VDIM-P /G2 | 120–277V      | 30W     | 5000K             | 3750         | 135 lm/W | >80 | >0.9         | <19 | 50,000 Hours |

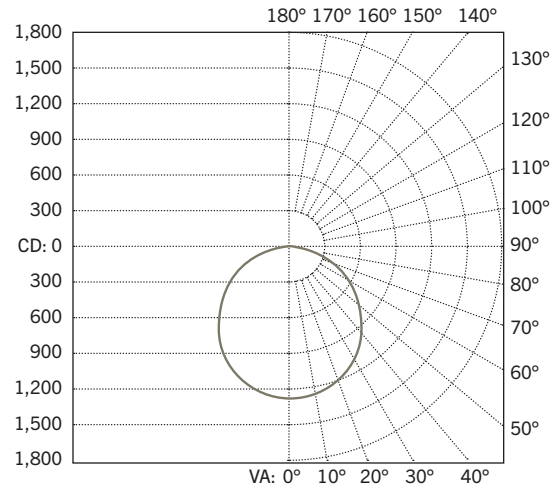
### PHOTOMETRIC SPECIFICATIONS

#### ISOCANDELA PLOT



- Cd: 1,116; 90%
- Cd: 992; 80%
- Cd: 868; 70%
- Cd: 744; 60%
- Cd: 620; 50%
- Cd: 496; 40%
- Cd: 372; 30%
- Cd: 248; 20%
- Cd: 122; 10%

#### POLAR CANDELA PLOT



- 120° H
- 119° H
- 116° H
- 114° H

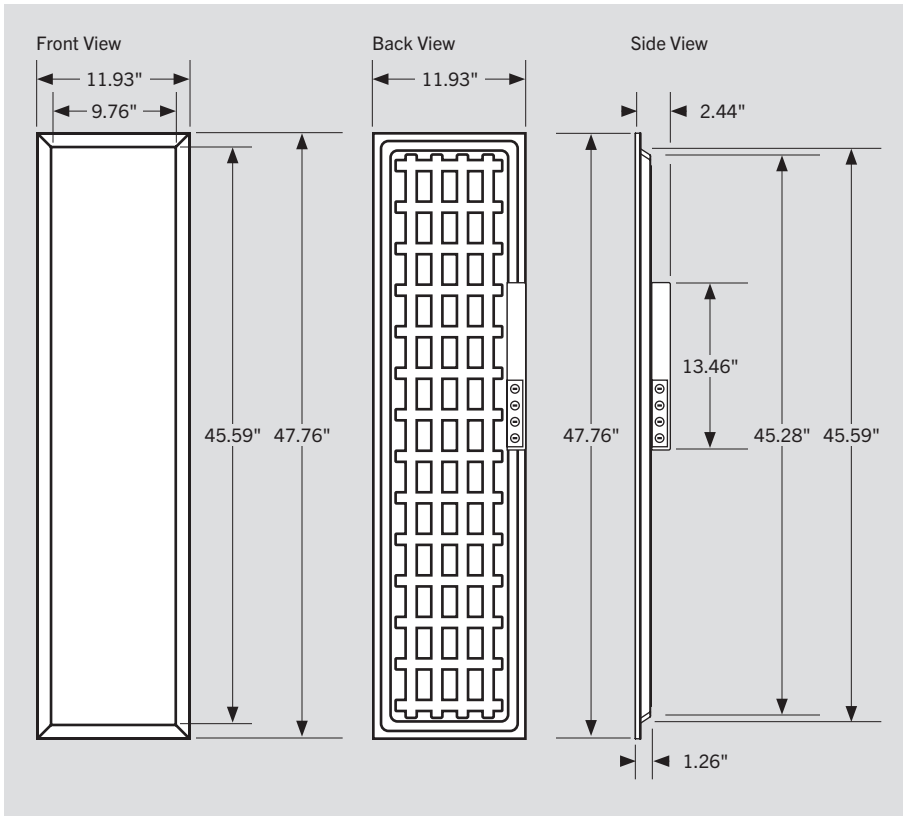
#### ZONAL LUMEN SUMMARY

| Zone  | Lumens  | % Luminaire |
|-------|---------|-------------|
| 0–60  | 2,887.7 | 76.7%       |
| 60–90 | 873.9   | 23.2%       |
| 0–90  | 3,765.3 | 100%        |

# KT-BPLED30-14-8XX-VDIM-P /G2

## BACKLIT LED PANEL LIGHT

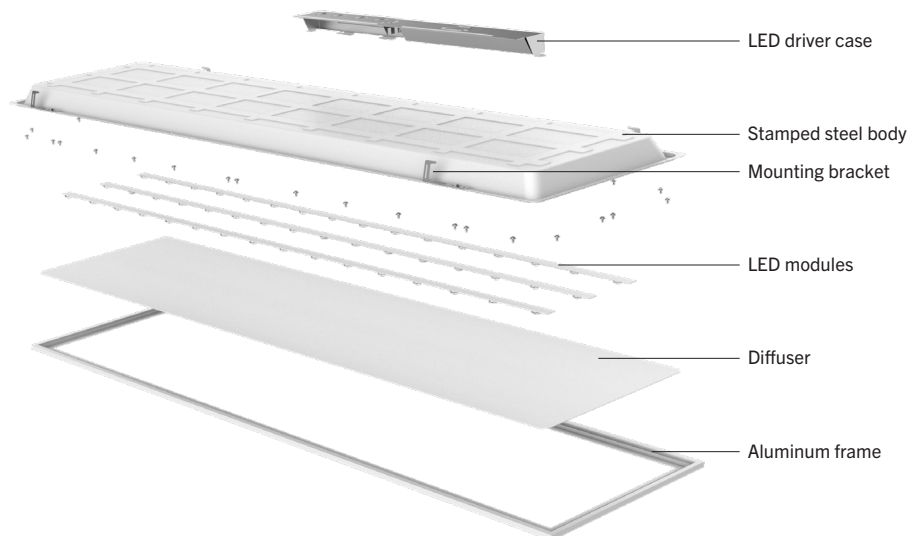
### PHYSICAL SPECIFICATIONS



### WEIGHT INFORMATION

| 1 Piece   | 1 Carton   |
|-----------|------------|
| 6.20 lbs. | 12.40 lbs. |

### EXPLODED VIEW CONSTRUCTION FEATURES



# KT-BPLED30-14-8XX-VDIM-P /G2

## BACKLIT LED PANEL LIGHT

### ACCESSORIES

#### SENSORS

Factory-Installable OR Field-Installable (field-installable purchased separately)

| ✓ | SUFFIX*  | CATALOG NUMBER     | DESCRIPTION  | UPC          | EASY CODE |
|---|----------|--------------------|--|--------------|-----------|
|   | /FC1-PIR | KTSL-FC1-UV-KO-PIR | Bluetooth mesh wireless fixture controller for SmartLoop system with remote mount PIR motion sensor with daylight harvesting and high-end trim; 120–277V; 3A max load with 0–10V dimming | 843654129259 | MGZ-59    |

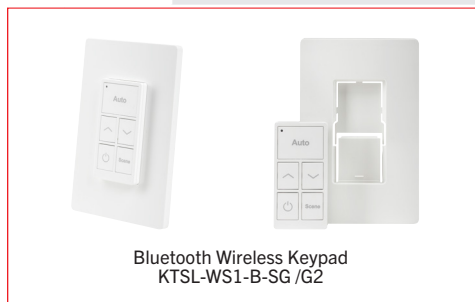


**Note:** Keystone SmartLoop is a DLC Qualified Network Lighting Control solution, offering advanced functions such as complete wireless control, zoning, high-end trim, occupancy/vacancy sensing, scene setting, and scheduling. To learn more about SmartLoop, please visit <http://www.keystonetech.com/smartloop>.

\* For factory installation of accessory, add suffix to fixture part number (see ordering examples and instructions on last page of spec sheet).

Field-Installable / Field-Use ONLY (purchased separately)

| CATALOG NUMBER    | DESCRIPTION  | UPC          | EASY CODE |
|-------------------|--|--------------|-----------|
| KTSL-WS1-B-SG /G2 | Bluetooth mesh wireless battery powered wall switch for SmartLoop system | 843654141695 | FYH-31    |



(Accessories continued on next page)

# KT-BPLED30-14-8XX-VDIM-P /G2

## BACKLIT LED PANEL LIGHT

### ACCESSORIES (continued)

#### CORD SETS

Factory-Installable OR Field-Installable (field-installable purchased separately)

| ✓ | SUFFIX*   | CATALOG NUMBER      | DESCRIPTION   | UPC          | EASY CODE |
|---|-----------|---------------------|---|--------------|-----------|
|   | /515P-6   | KT-CS-515P-6-18/3   | Cord set for high bay; 125V NEMA 5-15P; straight blade plug; 6' SJTOW cable; 18/3 wire  | 843654140124 | UKH-26    |
|   | /L715P-10 | KT-CS-L715P-10-16/3 | Cord set for high bays; 277V NEMA L7-15P; twist lock plug; 10' SJTOW cable; 16/3 wire   | 843654140131 | SFV-88    |
|   | /L615P-10 | KT-CS-L615P-10-16/3 | Cord set for high bays; 250V NEMA L6-15P; twist lock plug; 10' SJTOW cable; 16/3 wire   | 843654140148 | ZQS-05    |
|   | /L515P-10 | KT-CS-L515P-10-16/3 | Cord set for high bays; 250V NEMA L5-15P; twist lock plug; 10' SJTOW cable; 16/3 wire   | 843654140155 | GVH-22    |
|   | /L715P-6  | KT-CS-L715P-6-16/3  | Cord set for high bays; 277V NEMA L7-15P; twist lock plug; 6' SJTOW cable; 16/3 wire  | 843654140162 | DVU-44    |
|   | /L615P-6  | KT-CS-L615P-6-16/3  | Cord set for high bays; 250V NEMA L6-15P; twist lock plug; 6' SJTOW cable; 16/3 wire  | 843654140179 | LCW-66    |
|   | /L515P-6  | KT-CS-L515P-6-16/3  | Cord set for high bays; 250V NEMA L5-15P; twist lock plug; 6' SJTOW cable; 16/3 wire  | 843654140186 | POC-82    |
|   | /MC-6-3   | KT-MC-NP-6-18/3     | MC cable whip for high bays; no plug; inners 1/2" strip on both ends; 6' metal-clad cable; 18/3 wire                          | 843654134505 | EYP-82    |
|   | /MC-6-5   | KT-MC-NP-6-18/5     | MC cable whip for high bays; no plug; inners 1/2" strip on both ends; 6' metal-clad cable; 18/5 wire (dimming wires included) | 843654134512 | CBU-56    |
|   | /NP-10    | KT-CS-NP-10-16/3    | Cord for high bays; no plug; inners 1/2" strip on both ends; 10' SJTOW cable; 16/3 wire                                       | 843654140193 | YOH-90    |
|   | /NP-6     | KT-CS-NP-6-16/3     | Cord for high bays; no plug; inners 1/2" strip on both ends; 6' SJTOW cable; 16/3 wire  | 843654140216 | HUB-73    |
|   | /NP-15    | KT-CS-NP-15-16/3    | Cord for high bays; no plug; inners 1/2" strip on both ends; 15' SJTOW cable; 16/3 wire                                       | 843654140209 | EYD-18    |



\* For factory installation of accessory, add suffix to fixture part number (see ordering examples and instructions on last page of spec sheet).  
**Note:** For cord sets not listed here, please contact your Keystone sales rep.

(Accessories continued on next page)

# KT-BPLED30-14-8XX-VDIM-P /G2

## BACKLIT LED PANEL LIGHT

### ACCESSORIES (continued)

#### EMERGENCY BACKUP

Factory-Installable OR Field-Installable (field-installable purchased separately)

| ✓ | SUFFIX*            | CATALOG NUMBER              | DESCRIPTION   | UPC          | EASY CODE |
|---|--------------------|-----------------------------|---|--------------|-----------|
|   | /EM5 <sup>†</sup>  | KT-EMRG-LED-5C-500-EN /DF   | 5W, 500 lumen Smart Safe emergency backup with dual flex cables   | 843654132433 | RAR-74    |
|   | /EM12 <sup>†</sup> | KT-EMRG-LED-12C-1200-EN /DF | 12W, 1200 lumen Smart Safe emergency backup with dual flex cables | 890949019900 | YCV-23    |



5W, 500 lumen Battery Backup  
KT-EMRG-LED-5C-500-EN /DF



12W, 1200 lumen Battery Backup  
KT-EMRG-LED-12C-1200-EN /DF



\* For factory installation of accessory, add suffix to fixture part number (see ordering examples and instructions on last page of spec sheet).  
<sup>†</sup> Factory installation of emergency backup units will automatically include any relevant mounting bracket.

Field-Installable / Field-Use ONLY (purchased separately)

| CATALOG NUMBER     | DESCRIPTION   | UPC          | EASY CODE |
|--------------------|---|--------------|-----------|
| KT-BPLED-EM-14-KIT | Emergency LED backup mounting bracket kit for LED high bay fixtures | 843654128047 | EIG-03    |



Emergency Backup Mounting Bracket  
KT-BPLED-EM-14-KIT



(Accessories continued on next page)

# KT-BPLED30-14-8XX-VDIM-P /G2

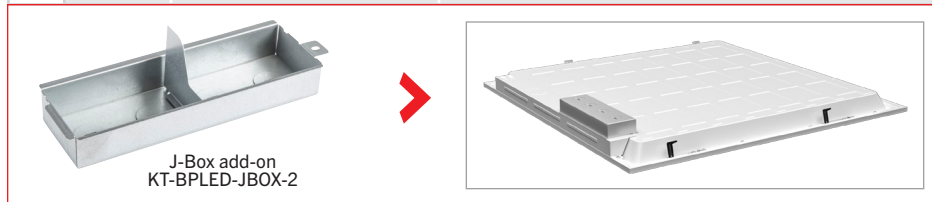
## BACKLIT LED PANEL LIGHT

### ACCESSORIES (continued)

#### MOUNTS AND BRACKETS

Factory-Installable OR Field-Installable (field-installable purchased separately)

| ✓ | SUFFIX* | CATALOG NUMBER  | DESCRIPTION                                | UPC          | EASY CODE |
|---|---------|-----------------|--|--------------|-----------|
|   | /JBOX   | KT-BPLED-JBOX-2 | Larger J-Box add-on for LED backlit panels | 843654128245 | BMV-31    |



\* For factory installation of accessory, add suffix to fixture part number (see ordering examples and instructions on last page of spec sheet).

Field-Installable / Field-Use ONLY (purchased separately)

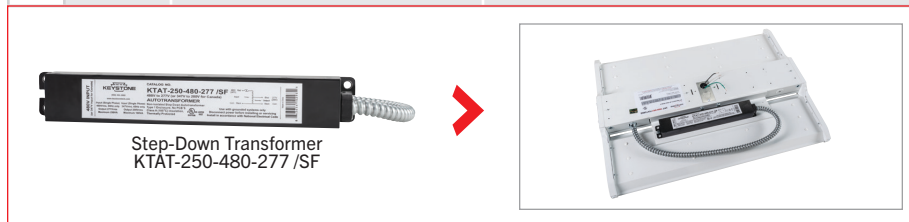
| CATALOG NUMBER         | DESCRIPTION  | UPC          | EASY CODE |
|------------------------|--|--------------|-----------|
| KT-BPLED-SM-14-KIT /G2 | Surface Mount kit for 1 × 4 backlit panels           | 843654134543 | CGY-52    |
| KT-BPLED-CABLE-KIT     | Aircraft cable hanging kit for LED high bay fixtures | 843654133423 | JLB-77    |



#### STEP-DOWN TRANSFORMERS

Factory-Installable OR Field-Installable (field-installable purchased separately)

| ✓ | SUFFIX* | CATALOG NUMBER       | DESCRIPTION  | UPC          | EASY CODE |
|---|---------|----------------------|--|--------------|-----------|
|   | /480†‡  | KTAT-250-480-277 /SF | Fully enclosed, single flex step-down transformer for LED high bay fixtures (250VA or lower) | 843654102931 | XIM-17    |



\* For factory installation of accessory, add suffix to fixture part number (see ordering examples and instructions on last page of spec sheet).

† Factory installation of step-down transformer units will automatically include any relevant mounting bracket.

‡ Step-down transformers cannot be ordered in conjunction with standard SJTOW cord set options (contact Keystone sales rep for available custom options if needed).

# KT-BPLED30-14-8XX-VDIM-P /G2

## BACKLIT LED PANEL LIGHT

### FIXTURE ORDERING INFORMATION

| CATALOG NUMBER               | CARTON QTY. | UPC          | EASY CODE |
|------------------------------|-------------|--------------|-----------|
| KT-BPLED30-14-835-VDIM-P /G2 | 2           | 843654146683 | WPN-31    |
| KT-BPLED30-14-840-VDIM-P /G2 | 2           | 843654146690 | AZY-03    |
| KT-BPLED30-14-850-VDIM-P /G2 | 2           | 843654146706 | AJQ-21    |

### FIXTURE CATALOG NUMBER BREAKDOWN

# KT-BPLED30-14-8XX-VDIM-P /G2

| 1                       | 2                                 | 3         | 4                      | 5        | 6                   | 7               | 8             | 9                   | 10  |
|-------------------------|-----------------------------------|-----------|------------------------|----------|---------------------|-----------------|---------------|---------------------|---|
| 1 Keystone Technologies | 2 Backlit Panel Light LED Fixture | 3 Wattage | 4 2' x 4' Nominal Size | 5 80 CRI | 6 Color Temperature | 7 0–10V Dimming | 8 Premium DLC | 9 Second Generation | 10 Additional Ordering Options (See details and examples below) |

| 10 Additional Ordering Options |                           |
|--------------------------------|---------------------------|
| (blank)                        | No sensor included        |
| /FC1-PIR                       | Occupancy sensor included |

### ORDERING EXAMPLES

FIXTURE WITH MULTIPLE FACTORY-INSTALLED ACCESSORIES\*

**KT-BPLED30-14-840-VDIM-P /G2/FC1-PIR/L715P-6/EM5/JBOX**

FIXTURE WITH MULTIPLE FACTORY-INSTALLED ACCESSORIES\*

**KT-BPLED30-14-840-VDIM-P /G2/FC1-PIR/EM5/JBOX/480**

FIXTURE WITH TWO FACTORY-INSTALLED ACCESSORIES\*

**KT-BPLED30-14-840-VDIM-P /G2/FC1-PIR/JBOX**

FIXTURE WITH SINGLE FACTORY-INSTALLED ACCESSORY

**KT-BPLED30-14-840-VDIM-P /G2/FC1-PIR**

FIXTURE WITH NO FACTORY-INSTALLED ACCESSORIES

**KT-BPLED30-14-840-VDIM-P**

| KEYSTONE FIXTURE |                              |
|------------------|------------------------------|
| SUFFIX           | CATALOG NUMBER               |
|                  | KT-BPLED30-14-840-VDIM-P /G2 |

| SENSORS    |                    |
|------------|--------------------|
| SUFFIX     | CATALOG NUMBER     |
| ✓ /FC1-PIR | KTSL-FC1-UV-KO-PIR |

| CORD SETS  |                    |
|------------|--------------------|
| SUFFIX     | CATALOG NUMBER     |
| ✓ /L715P-6 | KT-CS-L715P-6-16/3 |

| EMERGENCY BACKUP |                           |
|------------------|---------------------------|
| SUFFIX           | CATALOG NUMBER            |
| ✓ /EM5           | KT-EMRG-LED-5C-500-EN /DF |

| MOUNTS AND BRACKETS |                 |
|---------------------|-----------------|
| SUFFIX              | CATALOG NUMBER  |
| ✓ /JBOX             | KT-BPLED-JBOX-2 |

| STEP-DOWN TRANSFORMERS |                      |
|------------------------|----------------------|
| SUFFIX                 | CATALOG NUMBER       |
| ✓ /480                 | KTAT-250-480-277 /SF |

\* When ordering more than one factory-installed accessory, use multiple suffixes as shown in the ordering examples above.  
 Note: All accessories can also be ordered separately for field installation using just their regular Catalog Number, UPC, or Easy Code.

Note: Step-down transformers cannot be ordered in conjunction with standard SJTOW cord set options (contact Keystone sales rep for available custom options if needed).