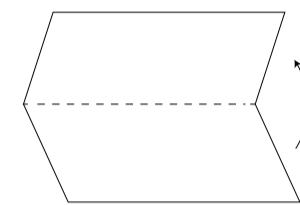


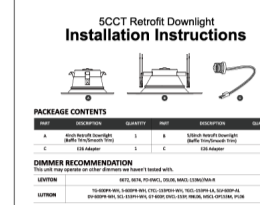
料号	7A.SM00020
名称	TR 4/6寸筒灯安装说明书
尺寸	A5
材质	150g铜版纸双面印刷 需折页
更新日期	2023.5.15
编制人	周权
审核	黄春霞 刘媛玲 蓝露锦

受控文件

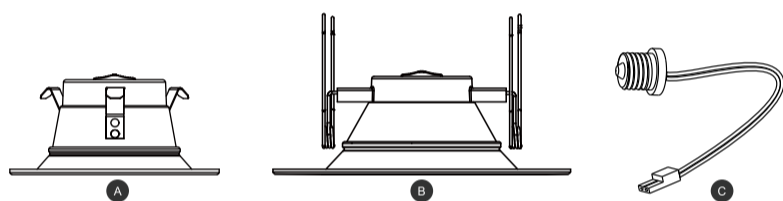
需要折页



成品正面



4/6INCH 5CCT RETROFIT DOWNLIGHT Installation Instructions



PACKAGE CONTENTS

PART	DESCRIPTION	QUANTITY	PART	DESCRIPTION	QUANTITY
A	4inch Retrofit Downlight (Baffle Trim/Smooth Trim)	1	B	5/6inch Retrofit Downlight (Baffle Trim/Smooth Trim)	1
C	E26 Adapter	1	C	E26 Adapter	1

DIMMER RECOMMENDATION

This unit may operate on other dimmers we haven't tested with. (Input 120V 60Hz)

LEVITON	6672, RNL06, IPL06, DSL06, 6674
LUTRON	TG-600PR-WH, S-600PR-WH, CTCL-153PDH-WH, TGCL-153PH-LA, SLV-600P-AL, DV-600PR-WH, SCL-153PH-WH, GT-600P, DVCL-153P, MSCL-OP153M, PD-6WCL, MACL-153M//MA-R

Please read understand this entire manual before attempting to assemble, operate or install the product.

WARNING – Risk of fire or electric shock. Installation of this retrofit kit requires a person familiar with the construction and operation of the luminaire's electrical system and the hazard involved. If not qualified, do not attempt installation. Contact a qualified electrician.

WARNING – Risk of fire or electric shock. Install this kit only in the luminaire that has the construction features and dimensions shown in the photographs and/or drawings and where the input rating of the retrofit kit does not exceed the input rating of the luminaire.

WARNING – To prevent wiring damage or abrasion, do not expose wiring to edges of sheet metal or other sharp objects.

This retrofit kit is accepted as a component of a luminaire where the suitability of the combination shall be determined by authorities having jurisdiction, product must be installed by a qualified electrician in accordance with the applicable and appropriate electrical codes. The installation guide does not supersede local or national regulations for electrical installations.

WARNING – Risk of fire or electric shock. Luminaires wiring, power supply, or other electrical parts may be damaged when drilling for installation of retrofit kit hardware. Inspect wiring and components for damage.

Only those open holes indicated in the photographs and/or drawings may be made or altered as a result of kit installation. do not leave any other open holes in an enclosure of wiring or electrical components.

This device is not intended for use with emergency exits.

Do not make or alter any open holes in an enclosure of wiring or electrical components during kit installation.

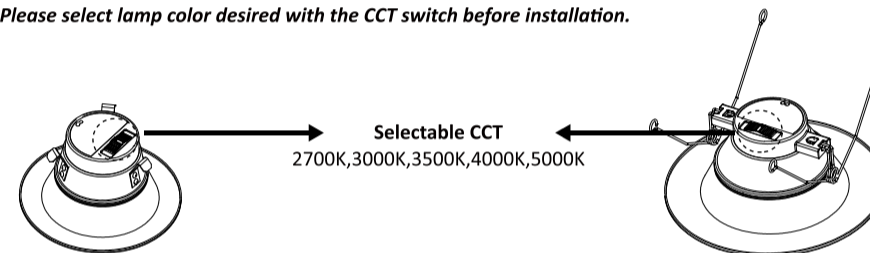
Suitable for Damp Locations.

Make certain power is off from the electrical panel before starting installation or attempting any maintenance.



CCT ADJUSTMENT

Please select lamp color desired with the CCT switch before installation.



INSTALL INTO HOUSINGS

TURN OFF POWER AT FUSE BOX BEFORE INSTALLING:

STEP 1: Screw the E26 socket adapter into the existing socket. (Fig1)

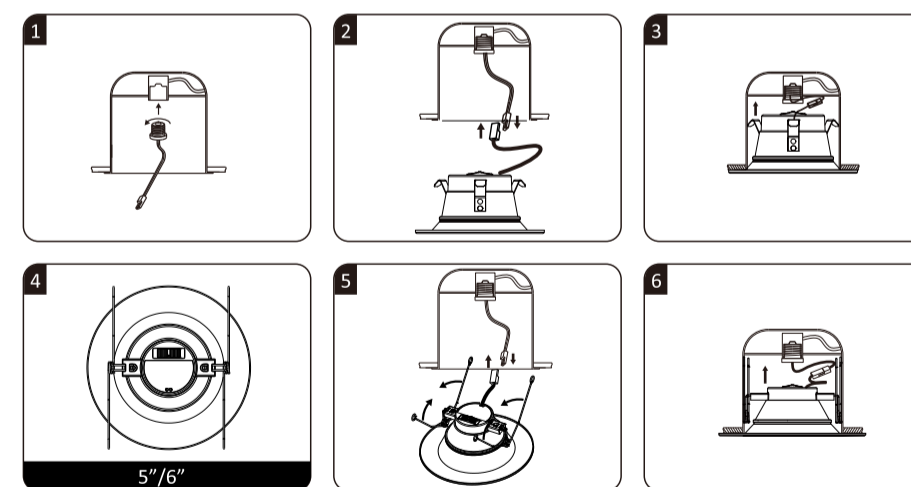
STEP 2: Connect the terminals from E26 socket adapter to the fixture. (Fig2, Fig5)

For 4" Retrofit:

STEP 3: Push fixture up into can, ensuring it is flush with ceiling. (Fig3)

For 5/6" Retrofit:

STEP 3: Press spring clips together, push fixture up into can and release once in, continue pushing until flush with ceiling. (Fig6)



REMOVING LED LUMINAIRES

1. With fingertips, pull down firmly on the trim ring until the fixture stops.

2. Squeeze the torsion springs together to remove the LED fixture.

3. Disconnect the fixture from E26 socket adapter.

4. Unscrew the E26 socket adapter from the recessed can.