



## Product Overview

The high-performing Series GKOMLHG6 Linear High Bay is an energy-efficient replacement for traditional T5 or T8 fixtures. It comes in 3 popular sizes, with power & CCT adjustment controls available for 210W.



## Key Features

### CONSTRUCTION:

- Advanced thermal management aluminum alloy housing in a slim and modern design.

### FINISH:

- The exterior is protected by a white rust-resistant powder coat finish that provides superior resistance to weathering and corrosion.

### OPTICS:

- Light engines are available in standard 4000K and 5000K configurations.
- A range of lumen options available from 12,700 to 42,000 Lumens, replaces up to 16 F54T5 or 18 F32T8.

### ELECTRICAL:

- Standard 120-277V input voltage, optional 347-480V input voltage.
- Standard 6KV surge protection, meeting the industrial ANSI standards.
- 1-10V dimming driver(s) as default.
- THD: ≤20%, Power Factor: ≥90%.

### WARRANTY:

- 5 Year Limited Warranty.

### CONTROLS:

- Power & CCT adjustment controls available for 210W, enabling power adjustment to 100%, 80%, 60%, or 40%, and CCT adjustment to 4000K or 5000K.
- Optional multi-level motion sensor - BRI823 / BRI820 (90W 480V only) / ANT-6-4T (210W Power & CCT Tunable only).
- Optional emergency battery backup provides up to 90 minutes of operation during outages.
- Bluetooth networked controls that are DLC NLC qualified, utilizing a Bluetooth SIG mesh network operated with IOS and web, optional for 210W.

### INSTALLATION:

- Chain mount with included steel wire rope.
- Pendant mount with optional pendant hanger.
- Optional wire guard protects lens against impact (by special order only).

### LISTINGS:

- DesignLights Consortium® (DLC) qualified.
- UL listed for damp locations.
- Rated for ambient operating temperature -40°F to 122°F (-40°C to 50°C).

# Performance Data

## Fixed Power & CCT Model Lumen Output

System Watts	Voltage	Photometry	4000K(70CRI)		5000K(70CRI)	
			Lumens	Efficacy	Lumens	Efficacy
90W	120-277V / 347-480V	General High Bay	12700lm	141lm/W	12700lm	141lm/W
130W	120-277V	General High Bay	18600lm	143lm/W	18600lm	143m/W
145W	347-480V	General High Bay	19100lm	132lm/W	19200lm	132m/W
175W	120-277V	General High Bay	25000lm	143lm/W	25000lm	143m/W
185W	347-480V	General High Bay	25300lm	137lm/W	25300lm	137m/W
210W	120-277V	General High Bay	30600lm	146lm/W	30600lm	146m/W
220W	347-480V	General High Bay	31000lm	141lm/W	31000lm	141m/W
270W	120-277V	General High Bay	37000lm	137lm/W	37000lm	137m/W
278W	347-480V	General High Bay	37500lm	135lm/W	37500lm	135m/W
300W	120-277V	General High Bay	41500lm	138lm/W	41500lm	138m/W
310W	347-480V	General High Bay	42000lm	135lm/W	42000lm	135m/W

## 210W Adjustable Power & CCT Lumen Output Table

Setting	System Watts	Voltage	Lens	4000K(70CRI)		5000K(70CRI)	
				Lumens	Efficacy	Lumens	Efficacy
100%	210W	120-277V	Clear Diffuser	30000lm	142lm/W	30000lm	142lm/W
80%	180W	120-277V	Clear Diffuser	25000lm	139lm/W	25000lm	139lm/W
60%	130W	120-277V	Clear Diffuser	20000lm	154lm/W	20000lm	154lm/W
40%	90W	120-277V	Clear Diffuser	13600lm	151lm/W	13600lm	151lm/W

## Electrical Data

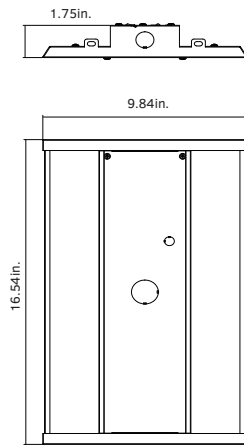
Number of Drivers	Driver Current (mA)	Nominal Power (W)	Input Voltage (V)	Current (Amps)
1	850	90	120	0.75
		90	208	0.43
		90	240	0.38
		90	277	0.32
	2400	90	347	0.26
		90	480	0.19
1	1200	130	120	1.08
		130	208	0.63
		130	240	0.54
		130	277	0.47
		145	347	0.42
		145	480	0.30
1	1060	175	120	1.46
		175	208	0.84
		175	240	0.73
		175	277	0.63
		185	347	0.53
		185	480	0.39

# Electrical Data

Number of Drivers	Driver Current (mA)	Nominal Power (W)	Input Voltage (V)	Current (Amps)
1	1060	210	120	1.75
		210	208	1.01
		210	240	0.88
		210	277	0.76
		220	347	0.63
		220	480	0.46
2	2400	270	120	2.25
		270	208	1.30
		270	240	1.13
		270	277	0.97
		278	347	0.80
		278	480	0.58
2	2400	300	120	2.50
		300	208	1.44
		300	240	1.25
		300	277	1.08
		310	347	0.89
		310	480	0.65

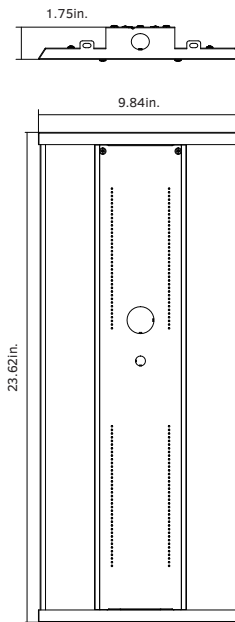
# Dimensions & Weight

90W / 130W



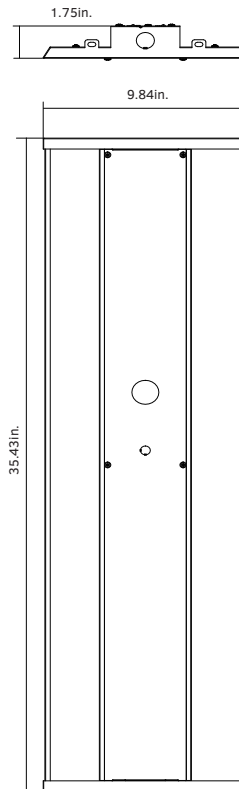
Net Weight  
90W: 4.63lb.  
130W: 4.63lb.

175W / 210W



Net Weight  
175W: 5.67lb.  
210W: 5.8lb.  
210W Tunable: 5.96lb.

270W / 300W



Net Weight  
270W: 9.02lb.  
300W: 9.02lb.

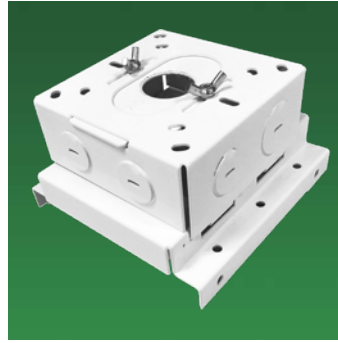
# Accessories



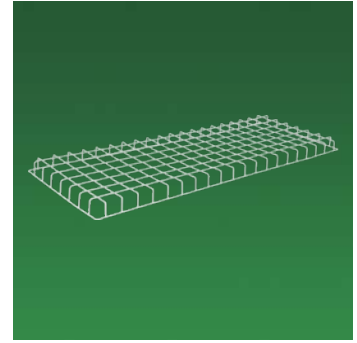
**MULTI-LEVEL MOTION SENSOR**  
Multi-level motion sensor detects occupancy in an area for additional energy savings.



**EMERGENCY BATTERY BACKUP**  
Emergency battery backup provides up to 90 minutes of operation during power outages.



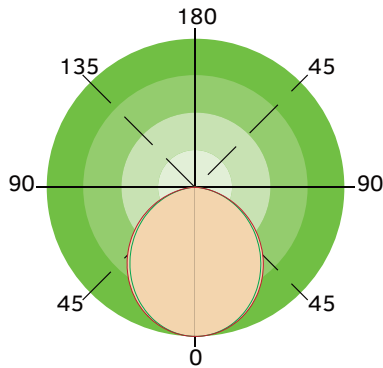
**PENDANT HANGER**  
A pendant hanger box includes everything necessary for pendant mounting the fixture.



**WIRE GUARD**  
A special order wire guard protects the fixture lens against impact.

# Light Distribution

## General



# Ordering Information

Linear High Bay Series GKOMLHG6				Example: GKOMLHG6210W27VDDKCD			
Fixture Type	Wattage	Voltage	CCT	Lens	Sensor (Optional)	Emergency Battery (Optional)	Internal Code
<input type="checkbox"/>	<input type="checkbox"/>	<input type="checkbox"/>	<input type="checkbox"/>	<input type="checkbox"/>	<input type="checkbox"/>	<input type="checkbox"/>	<input type="checkbox"/>
GKOMLHG6	90W	27V 120-277V 48V 347-480V	40K 4000K 50K 5000K	CD Clear Lens	M With PIR Sensor Blank Without Sensor	B With Battery Blank Without Battery	Blank Alphanumeric
	130W	27V 120-277V					
	175W						
	210W						
	270W						
	300W						
	145W	48V 347-480V					
	185W						
	220W						
	278W						
310W							
210W	27V 120-277V	DDK Adjustable					
225W	48V 347-480V						