

iQ | WIZ Controlled Smart Light

E31250 | E31258

- Anodized Brushed Black finish
- Color Ambience tuning (RGB) plus white tunable
- CRI 90+
- Controlled through Wiz app

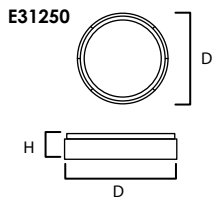
Job Name : _____
 Job Type : _____
 Quantity : _____
 Comments : _____



PRODUCT DESCRIPTION

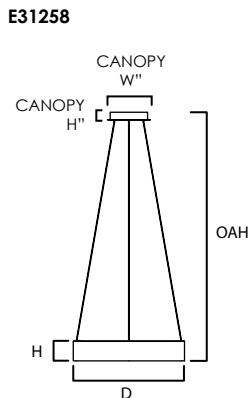
Rings finished in Brushed Black are fitted with a specially formed acrylic diffuser that evenly diffuses advanced LED light engines. The lighting is connected by WIZ with functions that include changing colors and brightness and programming various routines via the WIZ app or compatible smart home devices. To unlock all these incredible features, download the WIZ app or pair with smart home devices such as Amazon Echo or Google Assistant.

- Always consult a qualified electrician before installing any lighting product
- Installation Requirements:
 Ceiling fan attaches to electrical junction box securely anchored and capable of withstanding at least 35 lbs



MEASUREMENTS

| MODEL | DIMENSION | CANOPY | HANGING WEIGHT | WIRE LENGTH |
|--------|--------------------------|-------------------|----------------|-------------|
| E31250 | 23.5"D x 5.25"H | 1.5"H | 6.2 lb | 120"L |
| E31258 | 23.5"D x 4.25"H, 126"OAH | 9"W x 1.5"H x 9"L | 9.3 lb | 120"L |

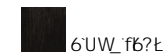


LAMPING

| MODEL | BULB TYPE | CRI | LUMENS RATED | DEL | INPUT | COLOR TEMP |
|--------|--------------------------|-----|--------------|------|-------|------------|
| E31250 | 50W PCB LED (Integrated) | 90+ | 3500 | 2800 | 120V | RGBW Y |
| E31258 | 50W PCB LED (Integrated) | 90+ | 3500 | 2800 | 120V | RGBW Y |

1 Wc b f c ~ Y X h f c i [\ K j n U d d

FINISHES OPTION



MATERIAL:

Aluminum + Steel + Acrylic

RATINGS:

W9H# g
 8fm'cWUhc b'
 8ja a UV Y fk jn K N
 Wc a dU h V Y XY j jW' c f U d d E'
 7 5 H n Y & ()



ADDITIONAL:

RATED LIFE: 50,000 hours
 OPERATING TEMP: -20° C (-4°), 40° C (104°F)



QR code to Wiz App



WESTERN DISTRIBUTION CENTER (HEADQUARTER)
 253 NORTH VINELAND AVE | CITY OF INDUSTRY, CA 91746

EASTERN DISTRIBUTION CENTER
 101 GARDNER PARK, | PEACHTREE CITY, GA 30269

P. 626.956.4200 | F. 626.956.4225 | maximlighting.com