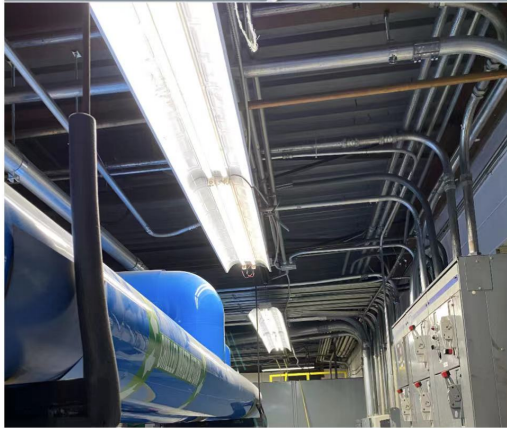


LED SMART CONTROL MAGNETIC TROFFER LINEAR STRIPS LIGHT KIT E2-RTST NCL DLC Listed Series



PRODUCT DESCRIPTION:

E2 Lighting's LED Linear Strip Kit is an energy efficient replacement for existing T12, T5 and T8 strip fixtures and troffers. The kit is designed to distribute uniform lighting within an aluminum extrusion lighting fixture. UL and ETL classified/recognized, UL and ETL listed, DLC Premium listed and RoHs compliant.

FEATURES:

- High-power magnets and quick connect provide for easy installation
- Frosted, clear or no lens cover options available
- 50,000 Hours L70 Lifespan
- ETL, NLC QPL ,and DLC® Premium 5.1

APPLICATION:

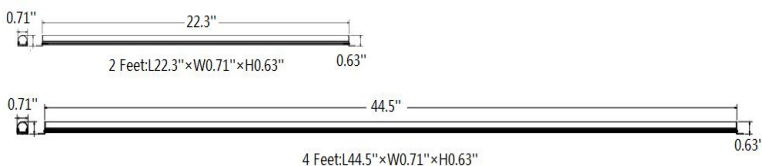
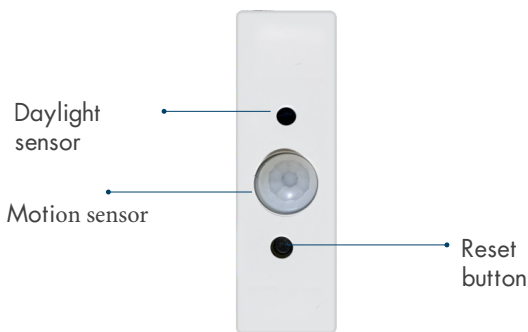
- Indoor Retrofit Kit
- Parking Garage, Warehouse, Offices, Restrooms, Storage Units and Stairwell Environments

TESTED DATA:

- Technical Requirements Version: 5.1
- Classification: Premium
- Light Output: 3120-10560 lm
- Wattage: 20W, 24W, 30W, 40W, 45W, 60W, 80 W
- Efficacy: >130 lm/W
- Power Factor: <= 0.99
- CCT: 4000K, 5000 K
- CRI: >80
- THD: <15 %
- Frequency: 50-60Hz
- Input Voltage: AC120-277V
- IP Rating: IP20
- Working Environment: -4°F-113°F
- Beam Angle: 120-160°
- Dimming Compatible: Yes
- Mercury Content: No Hg
- Lens: Polycarbonate
- Dimensions: 2ft=L22.3"xW0.71"xH0.63in, 4ft=L44.5"xW0.71"xH0.63in

WARRANTY:

E2 warrants that our LED products will be free from defects in materials and workmanship for a period of five (5) years from the date of delivery to the end user, including coverage of light output, color stability, driver performance and fixture finish. Please see our complete warranty terms located at www.e2lightingusa.com.





LED MAGNETIC TROFFER LINEAR STRIPS LIGHT KIT E2-RTST Series

Model	Retrofit Type	Watts	Voltage	CCT	CRI	Lumens
E2-RTST124	(1) Strip; 2ft x 4ft troffers/4ft strip fixture	24W	AC100-277V	4000K-5000K	>80	3120-3216lm
E2-RTST230	(2) Strips; 2ft x 4ft troffers/4ft strip fixture	30W				4050-4170lm
E2-RTST240	(2) Strips; 2ft x 4ft troffers/4ft strip fixture	40W				5200-5360lm
E2-RTST345	(3) Strips; 2ft x 4ft troffers/4ft strip fixture	45W				6075-6255lm
E2-RTST360	(3) Strips; 2ft x 4ft troffers/4ft strip fixture	60W				7800-8040lm
E2-RTST460	(4) Strips; 2ft x 4ft troffers/4ft strip fixture	60W				7800-8100lm
E2-RTST480	(4) Strips; 2ft x 4ft troffers/4ft strip fixture	80W				10160-10560lm
E2-RTST2120	(1) Strip; 2ft x 2ft troffers/2ft strip fixture	20W				2500-2700lm
E2-RTST2230	(2) Strips; 2ft x 2ft troffers/2ft strip fixture	30W				3750-4050lm
E2-RTST2340	(3) Strips; 2ft x 2ft troffers/2ft strip fixture	40W				5000-5400lm

MODEL SELECTION Typical order example: E2-RTST2230D-40K-F					
Family	Size		Controls	CCT	Cover
E2-RTST	124	4ft (1)-Strip 24W	Blank= Non-Dimmable D= 0-10V Dimmable	40K= 4000K 45K= 4500K 50K= 5000K	F= Frosted C= Clear N= No Cover
	230	4ft (2)-Strip 30W			
	240	4ft (2)-Strip 40W			
	345	4ft (3)-Strip 45W			
	360	4ft (3)-Strip 60W			
	480	4ft (3)-Strip 80W			
	460	4ft (4)-Strip 60W			
	480	4ft (4)-Strip 80W			
	2120	2ft (1)-Strip 20W			
	2230	2ft (2)-Strip 30W			
	2340	2ft (3)-Strip 40W			

TIOSL

Product ID: N0QF5T4Y6NZ



TIOSL Smart Control System

Manufacturer: Ark Smart Inc.

Scope: Interior

Scale: Whole Building, Room or Zone, Structured Parking

Technical Requirements Version: 5

PRODUCT OVERVIEW

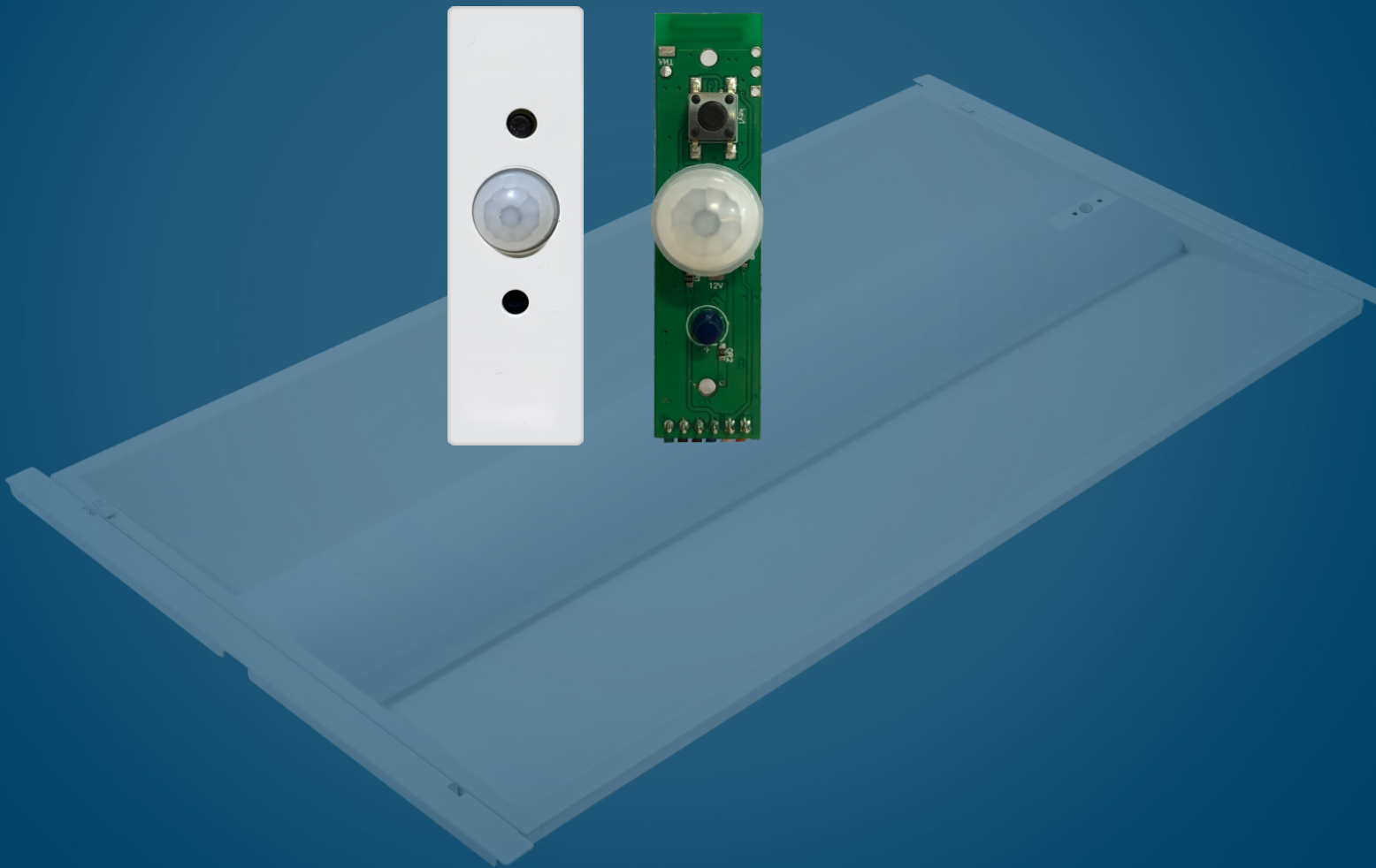
Manufacturer Ark Smart Inc.

Product Website [View Website](#)

QPL Networked Lighting

SUMMARY

- | | |
|---------------------------------------|-----------------------|
| ✓ Networking | ✓ Occupancy Sensing |
| ✗ Traffic Sensing | ✓ Daylight Harvesting |
| ✓ High-End Trim | ✓ Zoning |
| ✓ Individual Luminaire Addressability | ✓ Control |



LED PIR Fixture Mounted Smart Controller

DC lighting controller

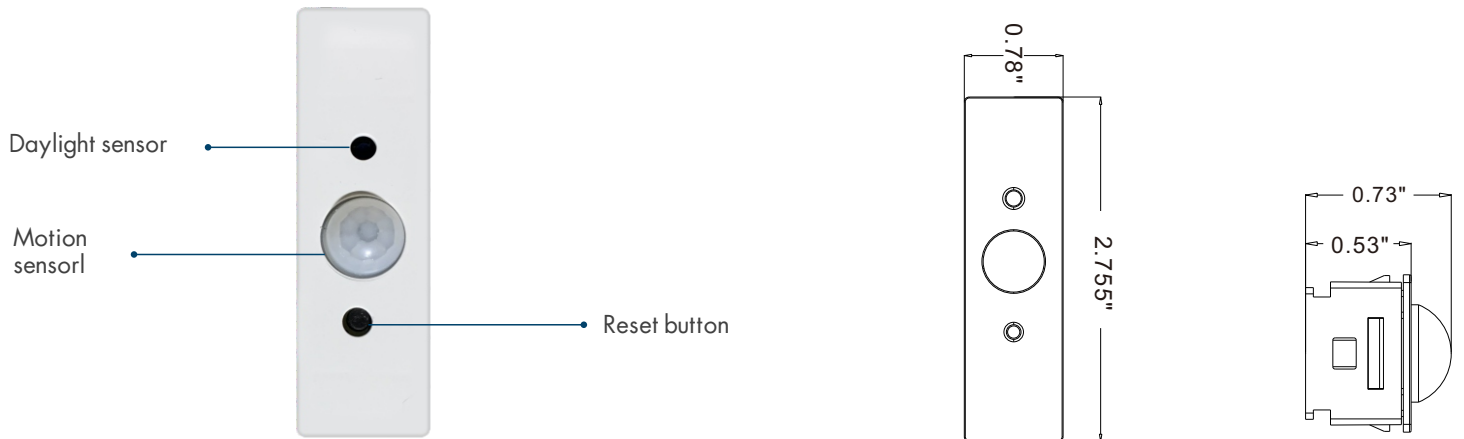
TL-SF-BPRN-MN-12-02

Product Range

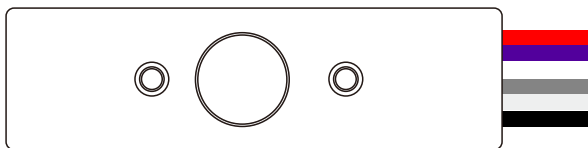
Part No.	Input voltage	Operating current	Output	Communication protocol	Communication frequency	Photosensitive range	Operating temperature
TL-SF-BPRN-MN-12-02	DC 12V	100mA (max)	0-10V dimming	Bluetooth Mesh	2405-2480MHz	10-1000Lux	-20°+60°C

Max. mounting height	Rx sensitivity	Max. launch power	Max. communication distance	IP rating
20ft (Open environment)	-92dB	8dBm	100m	IP20

Size



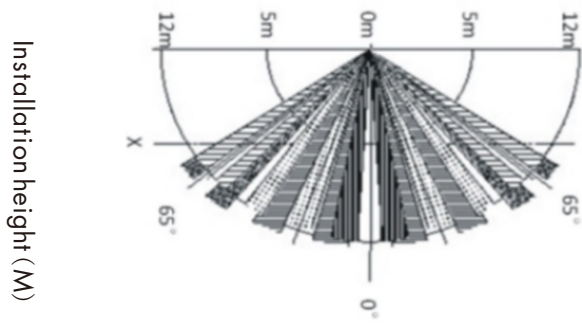
Wiring



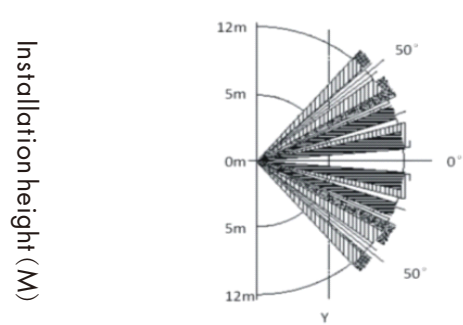
- Red: 12V
- Purple: DIM+
- Grey: GND/DIM-
- White: Emergency+(selected)
- Black: Emergency-(selected)

Sensor detection angle

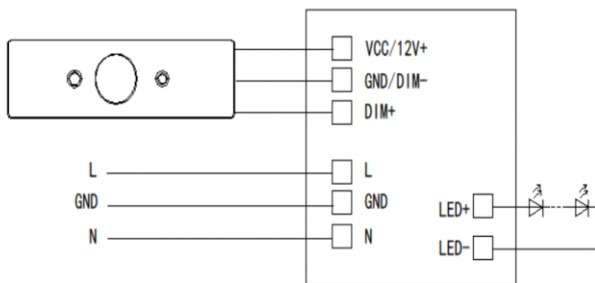
Contest installation detection range map



Wall installation detection range map



Wiring diagram



Application

LED Troffer Light

Magnetic led retrofit strip kit

LED batten light



TL-SF-BPRN-MN-12-02

Installation Precautions:

1. Before installing the Bluetooth module, first turn off the circuit breaker switch at the power supply.
2. Do not enable the installation of large-scale metal blocking positive lamps and places

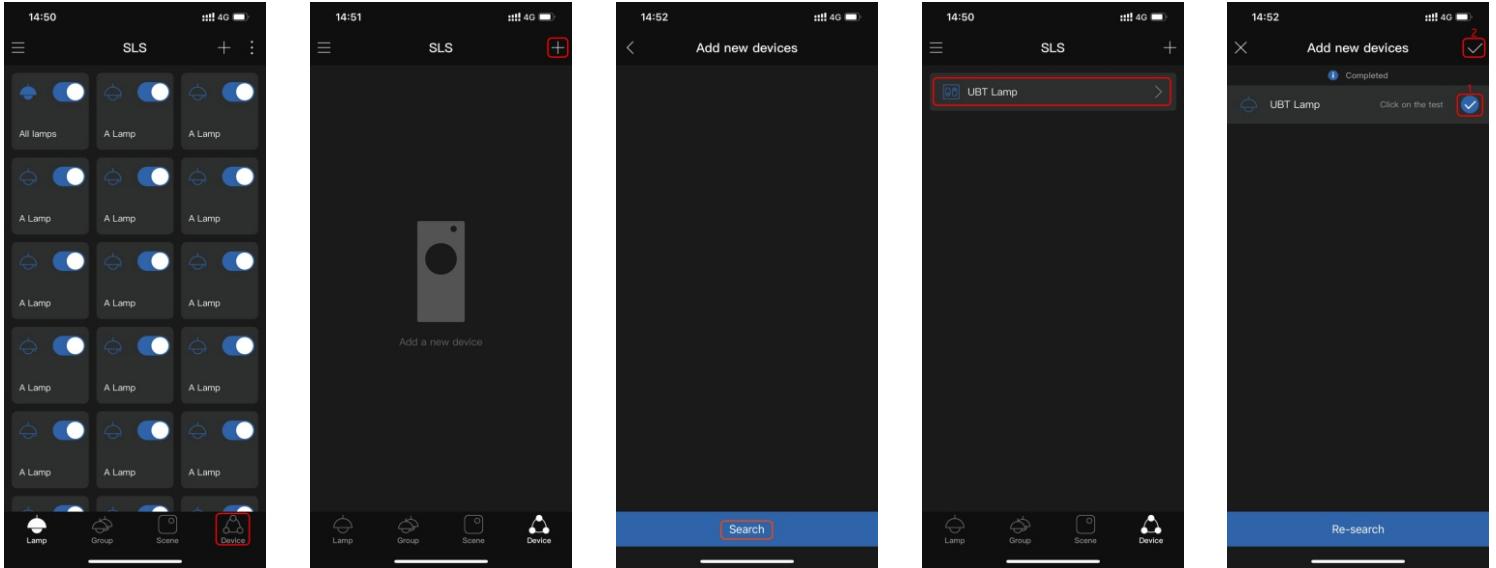
Precautions

1. We reserve the necessary text and image technical parameters correction rights
2. Without license or authorization, it is not allowed to disassemble and other people as damage, otherwise the contractual provisions guaranteed immediate failure
- 3, the product should not be installed in a place where the air is suddenly changed, such as air conditioning air outlet, wind direction rotation, etc.

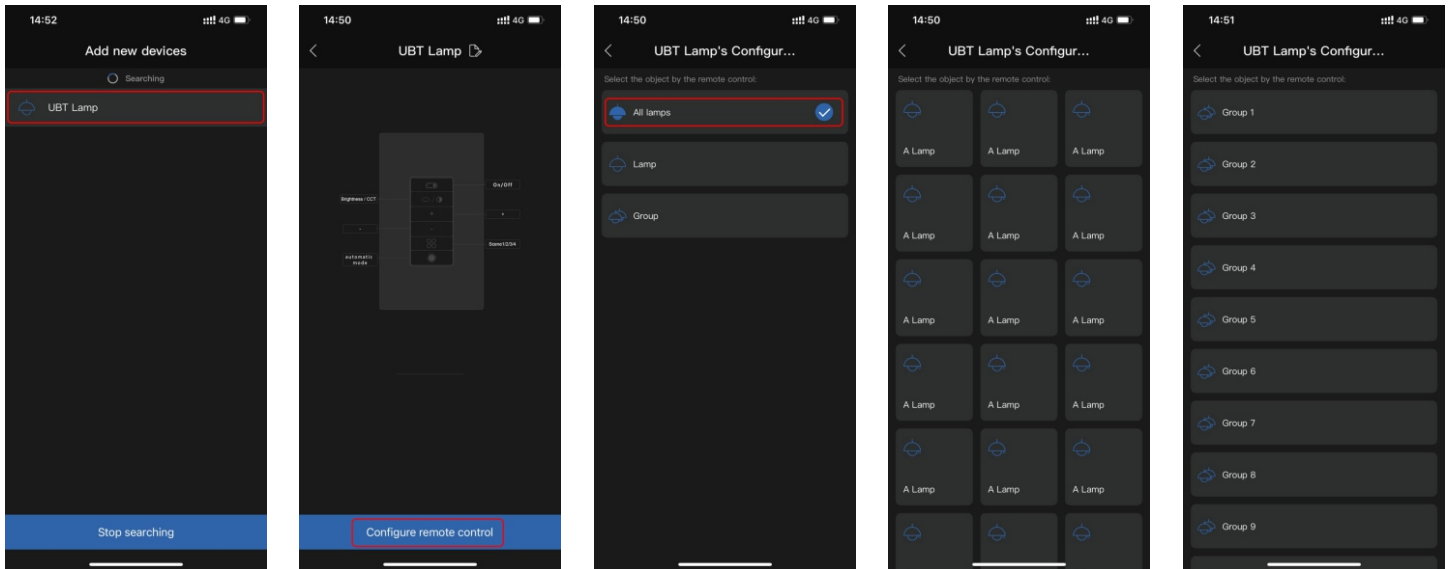
APP "SLS"



Add sensor



- 1-Click accessories
- 2-Click add device
- 3-Click search
- 4- Click to stop searching after searching out the device
- 5- After stopping the search, select the device that needs to be added



- 6- Click on the added device to enter the configuration page
- 7-Enter the binding device page
- 8-Select the device to be bound, which can support binding group, all devices, or single light
- 9-Bind a single device page,
- 10-Bind group page