

CRLC SERIES COMMERCIAL INDOOR LIGHTING

WESTGATE
THE FUTURE IS HERE...AND IT'S QUITE BRIGHT!

CRLC6-40W-MCTP-S-D
CRLC6-40W-MCTP-S-D-WH
6" LED COMMERCIAL SQUARE & OPEN RECESSED LIGHT

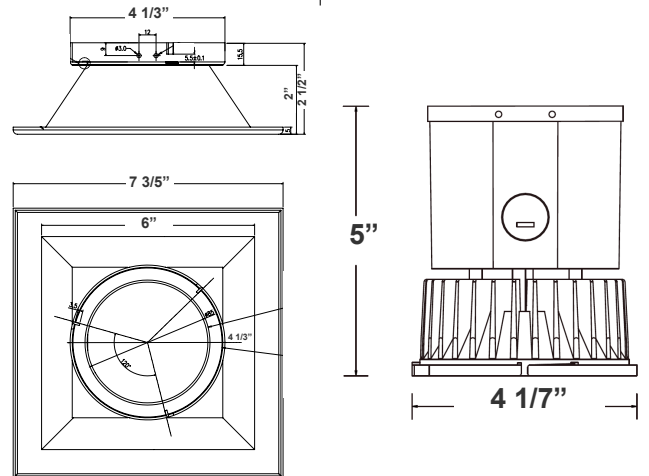


Ideal for hotel, offices, retail outlets, restaurant, parking garages, conference room, education facilities and more.

Customer Name: _____

Project Name: _____

Note: _____ Type: _____



7 1/2"(H) X 4 1/7" (W) X 7 3/5"(D)

Features

- 6" Haze & White Finish TRIM
- MCTP: The switch is on the light engine
- Mounting Options: Recessed
- 5-Year Warranty
- Lifespan: 50,000 hrs.

Technical Specifications

Electrical:

- Voltage: 120-277V AC 50/60Hz
- Wattage: 27W/34W/40W
- Power factor: >0.90
- Efficacy: 80 LPW

Mechanical:

- 6" Haze & White Finish TRIM
- Mounting Options: Recessed
- Temperature Rating: Designed to operate in temperatures 113°F
- No IC-Rated
- Suitable for Damp Locations
- 5-Year Warranty

Lighting:

- MCTP: The switch is on the light engine
- Dimming: 0~10V Dimmable
- Total lumens: 3200LM Max.
- Color temperature: 3000K/3500K/4000K
- Color rendering index: >80
- Lifespan: 50,000 hrs.

Applications:

- Ideal for hotel, offices, retail outlets, restaurant, parking garages, conference room, education facilities and more.

Other Models:

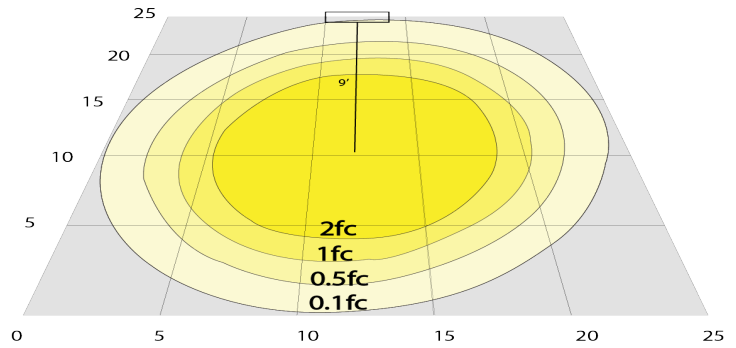
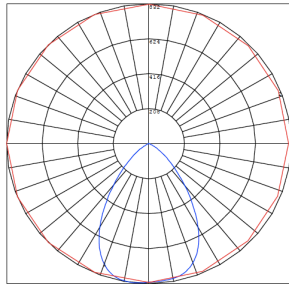
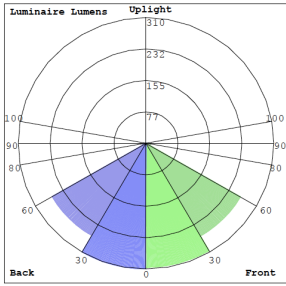
- 40W | 3200LM | CRLC6-40W-MCTP-S-D
- 40W | 3200LM | CRLC6-40W-MCTP-S-D-WH



Phone: (877) 805-2252 | Fax: (877) 805-2252
www.westgatemfg.com



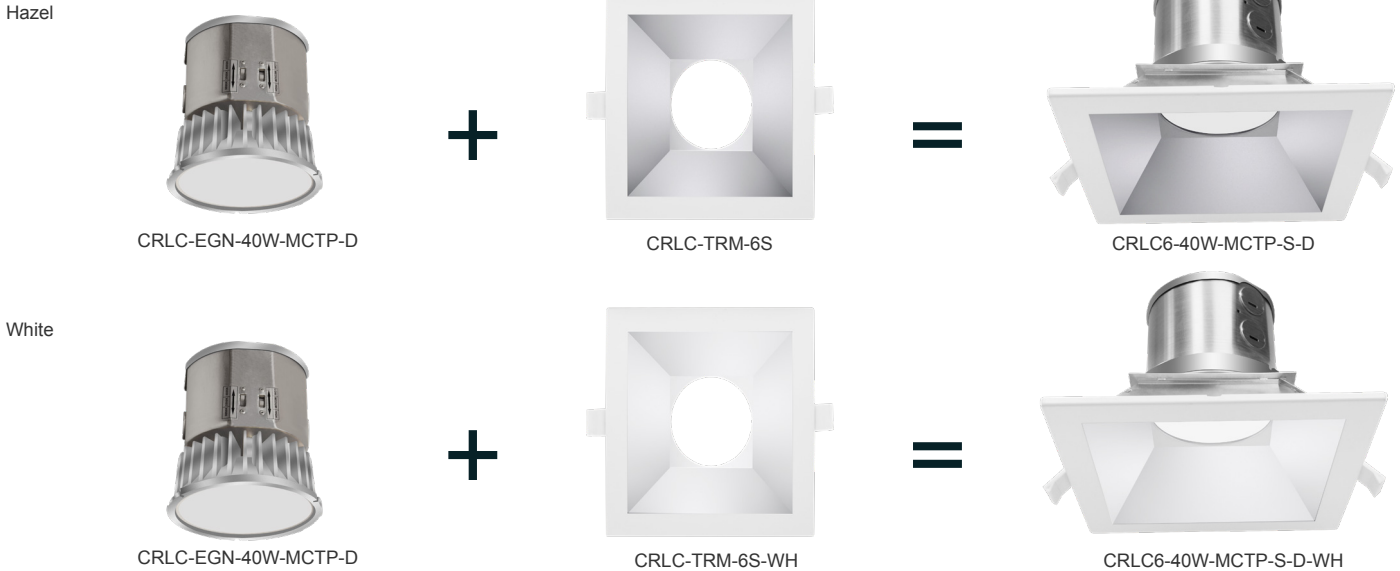
Photometrics: CRLC6-40W-MCTP-S-D



BUG Rating: B1-U1-G0

40W 5000K, Area 25" x 25" Mounting Height: 9'

Other Views:



Performance Table: CRLC6-40W-MCTP-S-D

MODEL NO.	Wattage	Voltage	Lumens	Color Temp.	BUG Rating	LPW
CRLC6-40W-MCTP-SA-D	27W	120-277V	2160LM	3000K	B1-U1-G0	80
CRLC6-40W-MCTP-SA-D-WH	34W		2720LM	3500K		
	40W		3200LM	4000K		

Sample Ordering

Model **Watt** **Color Temp.** **Shape** **Dimming** **Housing**
 CRLC6 - 20W - MCTP - S - D -
 Blank
 WH = WHITE

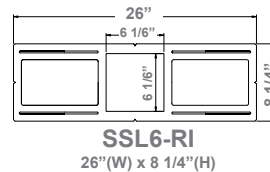
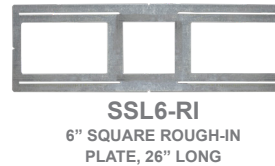
Accessory:

Blank = No Option For Accessories
 SSL6-RI = 6" SQUARE ROUGH-IN PLATE, 26" LONG

Factory-Installed Option:

Blank = No Option For Accessories
 OPT-EM-HB1EXT = EXTERNAL EMERGENCY BACK UP BATTERY

Accessory:



Factory-Installed Option:



Example:

- CRLC6-40W-MCTP-S-D (FOR 40W CRLC6 MCTP 120-277V)
- CRLC6-40W-MCTP-S-D OPT-EM-HB1EXT (FOR 40W CRLC6 MCTP 120-277V) (EXTERNAL EMERGENCY BACK UP BATTERY)

