



Round Edge-Lit LED

Performance Data

CRI
82+ Standard, 90+ Optional

CCT
Selectable 3000K, 3500K, 4000K

Voltage
120-277V

Projected Lifetime
50,000 Hours (L70)

Dimming
0-10V Dimming Standard,
100% down to 1%

Operating Temperature
-4F° to 122°F (-20°C to +50°C)

Listing
Suitable for indoor, dry and damp locations.

Client: _____
Project Name: _____

Order #: _____
Type: _____ Qty: _____



Description

Design and performance all wrapped into one luminaire. The Circa 2 is tailor-made for the architectural community that demands high quality profiles centered around the latest LED technology available.

Acrylic matte diffusion cover is used to make the light more comfortable, edge lighting technology ensures even illumination of the lens.

The Circa 2 has several options, with five sizes corresponding to different lumens and a choice of up and down lighting or down lighting. The flexibility with (CLO) Custom Lumen Output allows this fixture to be used in multiple applications such as:

Multi-purpose rooms, atrium, open offices, hospitality or retail establishments.

Features

- Heavy gauge extruded aluminum housing. Spun aluminum driver housing. Vacuum formed, single piece acrylic lens.
- Sizes: 14", 18", 24", 35" and 47" diameters
- Aircraft, Stem, Surface/Wall Mount
- Powder Coating finish is adopted, White Matte Texture, Black Matte Texture are standard, Silver Matte Texture customized.
- LED Light Engine is available as HLO (High Lumen Output) and SLO (Standard Lumen Output) providing efficient illumination, Support Direct, Indirect/Direct distribution.
- The Circa 2 boasts a single sheet acrylic matte diffusion cover to make it stand out from the competition. There are no seams on this elegant disc.

Listing

Ordering Information

A FIXTURE SERIES

CRI Circa 2

B SIZE

14	14"
18	18"
24	24"
35	35"
47	47"

C CCT

303540 3000K/3500K/4000K

D FINISH

W	Textured White
B	Textured Black
Custom colors available upon request	

E MOUNTING OPTIONS

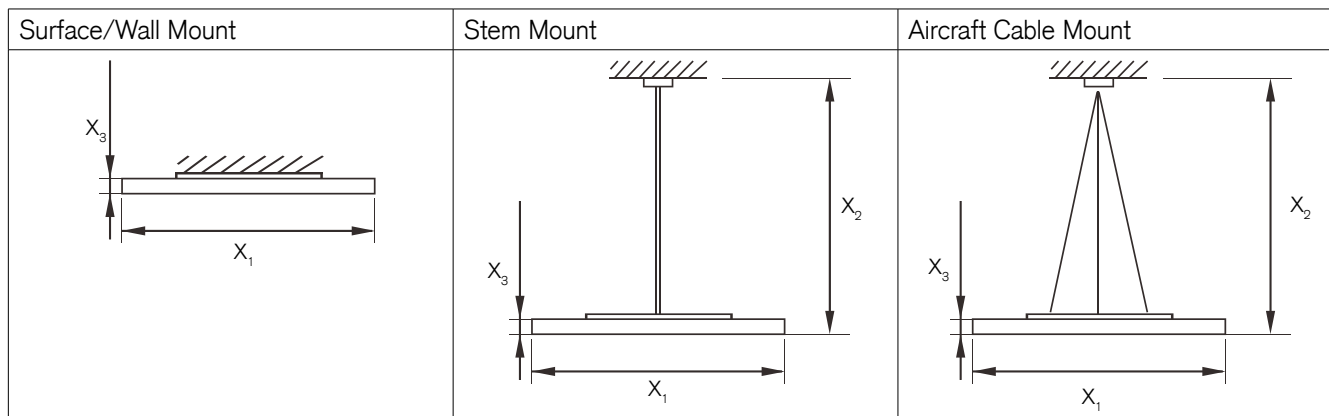
CR-AC-W-96	Aircraft Cable (96inx3) White Canopy
CR-AC-B-96	Aircraft Cable (96inx3) Black Canopy
CR1424-STMK-W	Stem Mount for 14", 18" & 24" White (39.5in)
CR1424-STMK-B	Stem Mount for 14", 18" & 24" Black (39.5in)
CR3547-STMK-W	Stem Mount for 35" & 47" White (39.5in)
CR3547-STMK-B	Stem Mount for 35" & 47" Black (39.5in)
CR14-SMK-W	Surface Mount for 14" & 18" White
CR14-SMK-B	Surface Mount for 14" & 18" Black
CR24-SMK-W	Surface Mount for 24" White
CR24-SMK-B	Surface Mount for 24" Black
CR3547-SMK-W	Surface Mount for 37 & 47" White
CR3547-SMK-B	Surface Mount for 37 & 47" Black

F WARRANTY¹

-	5 Year Warranty
10	10 Year Warranty
10L	10 Year Warranty including labor

¹5 Year Warranty is Standard unless specified

Dimensions



Inches

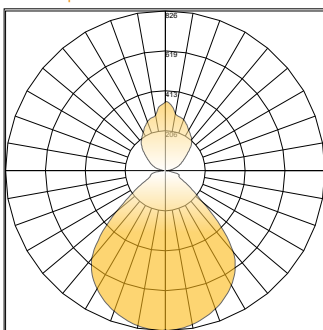
	Surface/Wall Mount	Stem Mount	Aircraft Cable Mount
X_1	14"/18"/24"/35"/47"	14"/18"/24"/35"/47"	14"/18"/24"/35"/47"
X_2	-	39.5"	96"
X_3	2.2"	2.2"	2.2"

Specification Chart

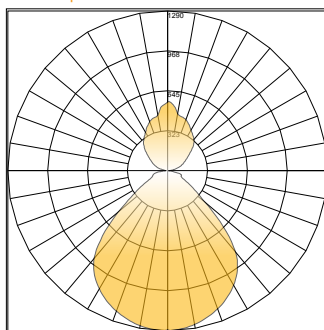
Size	Wattage	Lumens		Output Current		Replacement Driver
		Up Light	Down Light			
14	14"	28	700LM / 1800LM	700mA		XZ-SA30B-420070
18	18"	50	1500LM / 3500LM	1200mA		XZ-SA50B-420125
24	24"	62	2000LM / 4500LM	1500mA		XZ-SA60B-420150
35	35"	123	4200LM / 10000LM	D1: 1400mA	D2: 1400mA	XZ-SA60B-420150 (2 ea.)
47	47"	132	4700LM / 11000LM	D1: 1500mA	D2: 1500mA	XZ-SA60B-420150 (2 ea.)

Photometric

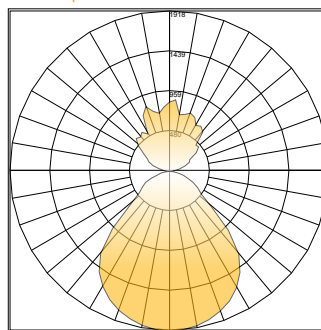
Polar Graph - 14" 30/35/40K 28W



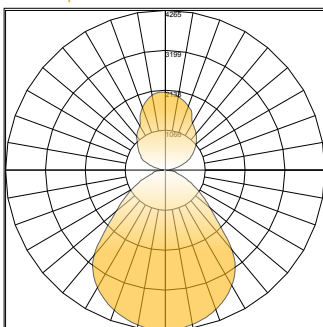
Polar Graph - 18" 30/35/40K 40W



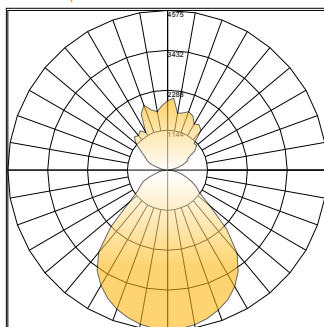
Polar Graph - 24" 30/35/40K 68W



Polar Graph - 36" 30/35/40K 123W



Polar Graph - 47" 30/35/40K 132W



Unified Glare Rating (UGR)

LED Flat Panel with Flat Optix Lens:

- Light is redirected from 60° to 90° degrees of luminaire, UGR <19
- Conical structures built into the lens minimize high angle glare
- Allows for increased efficacy, rather than lumen output glaring at occupants
- High efficiency and energy saving
- Protection class: IP20 Damp Location Rated
- Increased productivity



= Volumetric flat panel with micro-prismatic lens will reduce glare going into the occupant's eyes — = 90° = 60°

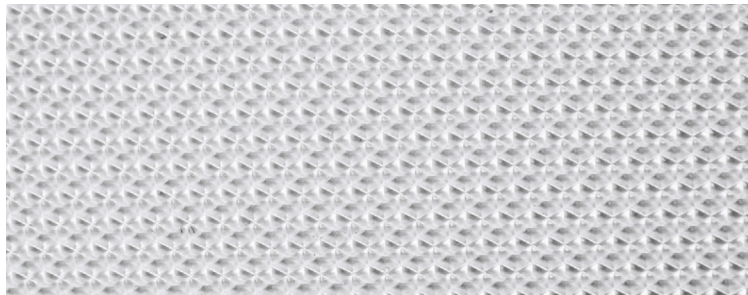
Standard LED Flat Panel:

- Harsh glare at viewing angles above 60°, UGR >24
- Wide beam angle at 120°
- Uncomfortable glare
- Reduction in visibility caused by intense light source in field of view
- Protection class: IP22 protects only from objects greater than 12 millimeters
- Loss of productivity



= High glare flat panel makes occupant's eyes feel uncomfortable — = 90° = 60°

Flat Optics™ Detail



Micro-prismatic technology redirects high-angle light, reducing visual glare. The light above 60° is suppressed to improve the Unified Glare Rating (UGR). This allows for the luminaire to meet recommended standards for office and indoor lighting.

UGR Criteria

UGR:	Hopkinson's Criterion:
<10	Imperceptible
<13	Just Perceptible
<16	Perceptible
<19	Acceptable
>22	Unacceptable
>25	Just Uncomfortable
>28	Uncomfortable

Micro-prismatic conical structures provide the most optimal luminance of a fixture from any viewing angle. The UGR rating of less than 19 provides the most acceptable glare for task lighting.