

# CMC SERIES

COMMERCIAL INDOOR LIGHTING

**WESTGATE**  
THE FUTURE IS HERE...AND IT'S QUITE BRIGHT!

CMC6-MCTP-DD-WH

CMC6-MCTP-DD-BK

**MCTP** Multi Color Temperature & Multi Power/Wattage (Selectable)



Shown With Suspension cable

Avail Finish:

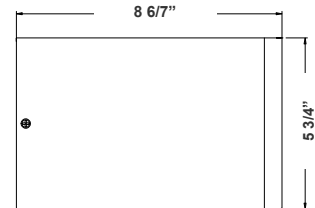
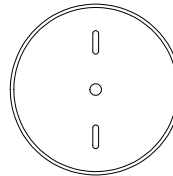


Customer Name: \_\_\_\_\_

Project Name: \_\_\_\_\_

Note: \_\_\_\_\_

Type: \_\_\_\_\_



8 6/7"(H) X 5 3/4" (W) X 6" (D)

6" Cylinder, Pendant & Ceiling Cylinder Light, Aluminum Cylinder, White Aluminum Housing, Clear Glass Lens

## Features

- Multi CCT: Selectable Multi-CCT & Power Switches on the back of the fixture (Dual Function)
- Triac Dimmable at 120V & 0-10V Dimming at 120-277V
- 7-Year Warranty
- Aluminum Base and Glass Lens

## Technical Specification

### Electrical:

- Voltage: 120-277V
- Power Factor: >0.90
- THD: <20%
- Wattage: 21W/ 28W/ 35W
- Efficacy: 75 LP

### Mechanical:

- Aluminum Housing & Glass Lens
- Suspension Cable & Canopy Set Accessories Avail.
- Universal Swivel W/ Rod Kit Accessories Avail. Ambient Operating Temperature: -13°F to 113°F
- Rated life: 70,000 hrs
- IP Rating: IP40 suitable for damp locations

### Lighting:

- Dimming: (Dual Function) Triac Dimmable at 120V & 0-10V Dimming at 120-277V
- Total Lumens: 2624LM Max.
- Color Temperatures: 3000K/ 4000K/ 5000K
- Color Rendering Index: CRI ≥ 80
- Beam Angle: 25°

### Applications:

- 6" Cylinder, Pendant & Ceiling Cylinder Light, Aluminum Cylinder, White Aluminum Housing, Clear Glass Lens

### Other Models:

- 6W | 450LM | CMC2-MCT-DT-WH
- 6W | 450LM | CMC2L-MCT-DT-WH
- 9W | 675LM | CMC3-MCTP-DD-WH
- 15W | 1125LM | CMC4-MCTP-DD-WH
- 6W | 450LM | CMC2-MCT-DT-BK
- 6W | 450LM | CMC2L-MCT-DT-BK
- 9W | 675LM | CMC3-MCTP-DD-BK
- 15W | 1125LM | CMC4-MCTP-DD-BK



Phone: (877) 805-2252 | Fax: (877) 805-2252  
www.westgatemfg.com



WG-06192023

## Other Views:

BLACK:



Side View



Lens View



Back View

WHITE:



Side View



Lens View



Back View

## Performance Table: CMC6-MCTP-DD

MODEL NO.	Wattage	Voltage	Lumens	Color Temp.	LPW
CMC6-MCTP-DD-WH	21W	120-277V	1575LM	3000K	75
	28W		2100LM	4000K	
CMC6-MCTP-DD-BK	35W		2625LM	5000K	75

## Sample Ordering

Model Color Temp. Dimming Housing

CMC6 - MCTP - DD -

WH = White  
BK = Black

## Accessories:

Blank = No Option For Accessories

CMC6-TRM-AG = 6in Ceiling Mount Cylinder Trim, Anodized Gold

CMC6-TRM-BN = 6in Ceiling Mount Cylinder Trim, Brushed Nickel

CMC46-ULK = Uplight kit

CMC6-WPCK-WH = CMC6 Weatherproof Conversion Kit For Cord Or Down-Rod, White

CMC6-WPCK-BK = CMC6 Weatherproof Conversion Kit For Cord Or Down-Rod, Black

CMC6-HCDK-BK = 6in Ceiling Mount Cylinder Honeycomb Diffuser Kit, Black

CMC6-HCDK-AG = 6in Ceiling Mount Cylinder Honeycomb Diffuser Kit, Anodized Gold

CMC-CS-8FT-WH = Suspension Cable & Canopy Set For CMC Series, 8Ft, 5-Wire, White

CMC-CS-8FT-BK = Suspension Cable & Canopy Set For CMC Series, 8Ft, 5-Wire, Black

CMC-SRK-218-5C-WH = Universal Swivel W/ Rod Kit, 18 Or 36 Inches, 5-Wire, White

CMC-SRK-218-5C-BK = Universal Swivel W/ Rod Kit, 18 Or 36 Inches, 5-Wire, Black

CMC-SRK-224-5C-WH = Universal Swivel W/ Rod Kit, 24 Or 48 Inches, 5-Wire, White

CMC-SRK-224-5C-BK = Universal Swivel W/ Rod Kit, 24 Or 48 Inches, 5-Wire, Black

## Factory-Installed Option:

Blank = No Option For Accessories

OPT-EM-8120AC = Emergency Backup with Extension Cylinder

## ACCESSORIES:



CMC6-TRM-AG  
Trim, Anodized Gold



CMC6-TRM-BN  
Trim, Brushed Nickel



CMC6-HCDK-BK  
Honeycomb Diffuser  
Kit, Black



CMC6-HCDK-AG  
Honeycomb Diffuser Kit,  
Anodized Gold



CMC-CS-8FT-BK  
Suspension Cable &  
Canopy Set For CMC  
Series, 8Ft, 5-Wire, Black



CMC-CS-8FT-WH  
Suspension Cable &  
Canopy Set For CMC  
Series, 8Ft, 5-Wire, White

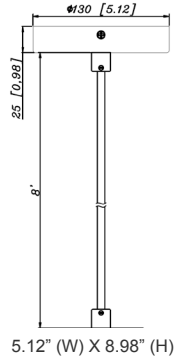
## FACTORY-INSTALLED OPTION:



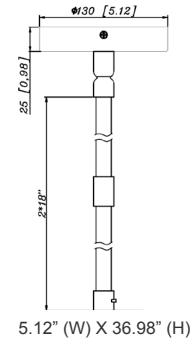
OPT-EM-8120AC



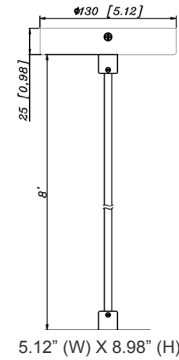
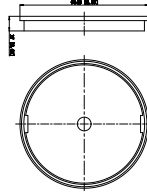
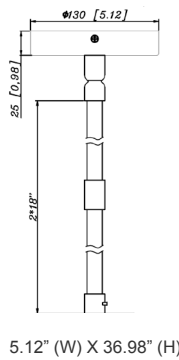
**ACCESSORIES:**



CMC6-MCTP-DD-BK+CMC-CS-8FT-BK  
CMC6-MCTP-DD-WH+CMC-CS-8FT-WH



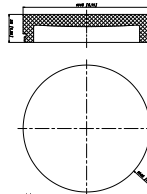
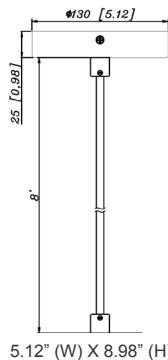
CMC6-MCTP-DD-BK+CMC-SRK-218-5C-BK  
CMC6-MCTP-DD-WH+CMC-SRK-218-5C-WH



CMC6-MCTP-DD-BK+CMC-SRK-218-5C-BK+CMC6-WPCK-BK  
CMC6-MCTP-DD-WH+CMC-SRK-218-5C-WH +CMC6-WPCK-WH



CMC6-MCTP-DD-BK+CMC-CS-8FT-BK+CMC6-TRM-AG  
CMC6-MCTP-DD-WH+CMC-CS-8FT-WH+CMC6-TRM-BN



CMC6-MCTP-DD-BK+CMC-CS-8FT-BK+CWMC6-DL32  
CMC6-MCTP-DD-WH+CMC-CS-8FT-WH+CWMC6-DL32

