



Item#: **90310**
LED COMPASS HIGH BAY
 HIGH-BAY LUMINAIRES FOR COMMERCIAL AND INDUSTRIAL BUILDINGS

FEATURES

- Die cast aluminum for better heat dissipation
- Dust proof and anti-corrosive
- Modern design
- High efficiency driver with built-in surge protection
- Includes a 12V DC AUX wire

APPLICATION

Ideal for commercial and industrial applications; malls, warehouses, factories, retail stores, athletic facilities, workshops, airports, and large areas.

ELECTRICAL

Wattage	204W
Voltage	100-277V
Power Factor	0.9
Total Harmonic Distortion (THD)	8.3

LIGHTING PERFORMANCE

Lumens	33414
Lumens Per Watt (LPW)	164
Color Temperature (CCT)	5000K
Color Rendering (CRI)	73
R9 (Red Value)	-16
Beam Angle	110°
Light Distribution	Type VS
BUG Rating (Backlight, Uplight, and Glare)	B5 - U3 - G2
Dimmable Lighting Control	<i>Dimmable</i> 0-10V, Range 10% - 100%

ENVIRONMENT

Operating Temperature	-22°~ 122°F
Suitable Location	WET
Ingress Protection Rating	IP65

LIFESPAN

Average Life (Hours)	50,000
Warranty (Years)	5

COMPONENTS

LED Light Source	Lumiled 2835
Driver	SS-200CNL

CONSTRUCTION

Housing	Aluminum
Lens	Tempered Glass
Base / Power Supply	Hard Wired
Finish	Black

QUALIFICATIONS

Model Number	CHB3-200-D-MV-50K-170S
--------------	------------------------



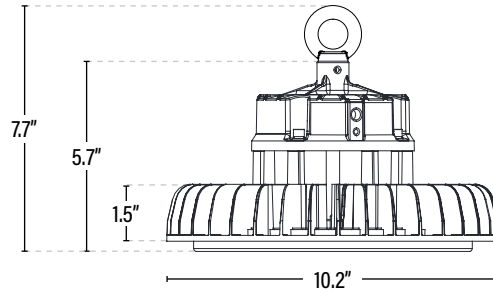
Visit www.designlights.org/search to confirm qualification. • Published lumens on LED products are approximate and may vary slightly. • Specifications are subject to change without notice.

Item#: **90310**
LED COMPASS HIGH BAY

ITEM INFORMATION

DIMENSIONS (Inches)

Width/Diameter (MOD)	10.2"
Height	5.7"
Net Weight (Lbs)	5.3



SUPPORTING DOCUMENTS (Grey = not available at this time.)

Product Sheet	VIEW
Install Instructions	VIEW
IES Download from Web Item	VIEW
LM79	VIEW
LM80	VIEW

PACKAGING

		UPC	DIMENSIONS (LxWxH)	GROSS WEIGHT (Lbs)
Master Carton	1	811768029123	11.4" x 11.4" x 7.3"	--
Country of Origin	China			
HS Tariff	9405.10.6020			

ORDERING Qualification Model # CHB3-200-D-MV-50K-170S

ITEM#	DESCRIPTION	CASE
90310	LED COMPASS HIGH BAY/200W/50K/DIMM/100-277V/BLK - DLC®	1

ACCESSORIES

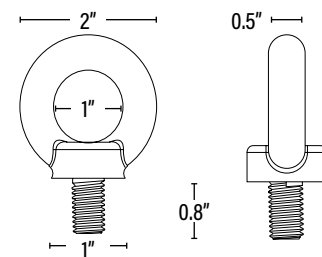
90372	ADJUSTABLE ANGLE MOUNTING BRACKET FOR 100-240W COMPASS HIGH BAY	20
90370	MICROWAVE MOTION SENSOR FOR COMPASS HIGH BAY/1-10V DIMM/100-277V/KIT	10
90360	16IN ALUMINUM REFLECTOR FOR COMPASS HIGH BAY	1
90362	16IN ACRYLIC REFLECTOR FOR COMPASS HIGH BAY	1
90363	16IN ACRYLIC BOTTOM LENS FOR ACRYLIC REFLECTOR FOR COMPASS HIGH BAY	1
90396	78IN WATERPROOF CONNECTOR AND CORD/BLACK 18AWG/300V	50
55695	EMERGENCY PACK FOR LED COMPASS 40W/90 MIN - T20C	4

REPLACEMENT PARTS

903814	M12 REPLACEMENT EYELET FOR LED COMPASS HIGH BAYS	1
SS-200CNL	REPLACEMENT DRIVER	1

ADDITIONAL INFORMATION:

- Safety cable not included, must be provided by installer.
- Power and dimming cord length approximately 72"
- Multiple screw holes are conveniently placed throughout the top of the fixture to connect occupancy sensors and reflectors.



M12
Eyelet Dimensions