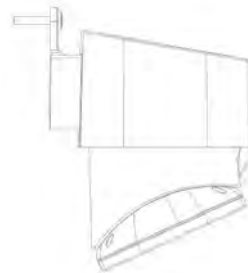
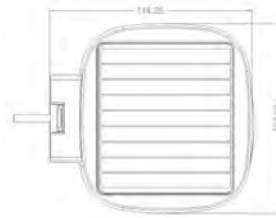




# 72534 - SOLAR FLOOD LIGHT

20W 4000K WHITE

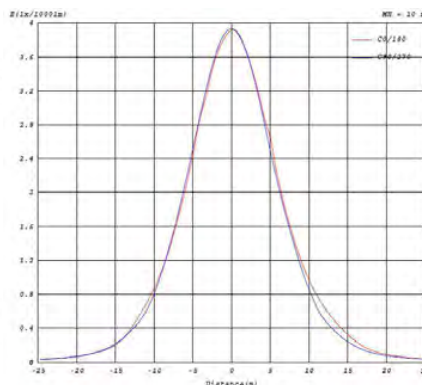
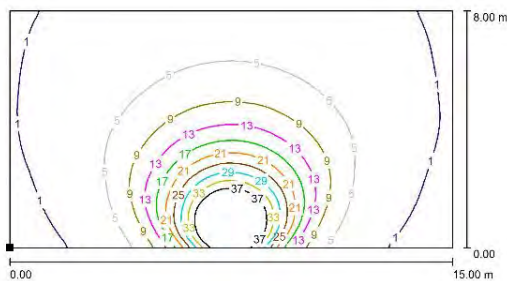


## FEATURES:

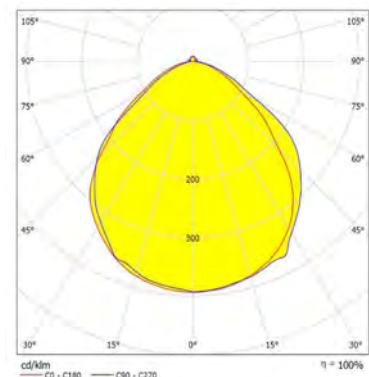
- High sensitivity PIR sensor Switch
- 20 Hour Charge Time
- 7-10 Day Run Time
- Includes Battery Heater for Cold Weather Applications
- Charging Temperature: 32°F -104°F  
Discharging Temperature: -4°F-140°F
- High Lumen Output LEDs
- Power Source: Epoxy Mono-Crystalline Solar Panel - 1W
- IP65 Wet Location Rated
- Easy Installation
- 2 Year Warranty

Part#	CCT	Lumens	Light Pattern	Dimming
72534	4000K	2,000	110°	N/A

## PHOTOMETRY



Illumination Curve



Luminance Distribution



# 72534 - SOLAR FLOOD LIGHT

20W 4000K WHITE

## Technical Specifications:

### **Electrical:**

Power: Epoxy Mono-Crystalline, 1W

Operating Temperature: -4°F to 140°F

Charging Temperature: 32°F -104°F

Discharging Temperature: -4°F-140°F

### **Product Parameters:**

Wattage: 20W

CCT: 4000K (Cool White)

### **Construction:**

Housing: Thermal Conductive Plastic

IP Rating: IP65 Wet Location Rated

### **Sensor Specifications:**

Beam Angle: 110°

Sensing Distance: 20'

Mounting: Wall Mount

### **Component Specifications:**

LED: SMD 2835

Comes with Li-ion Battery

Capacity: 3.7V 14.8WH 2AH/PC

Charging/Discharging Temp:

32°F -104°F/ -4°F-140°F

Charging Time: 20 hours

Ra 80+

Non-Dimmable

Carton Qty: 1

### **Warranty:**

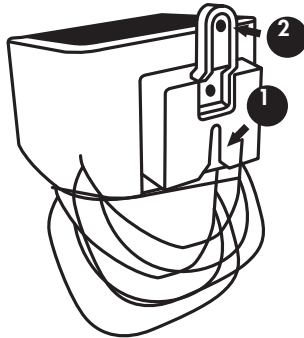
Morris Products carries a 2 year warranty from date of purchase against defects in materials and workmanship (assuming normal and proper usage).



## Morris CAT#: 72534 - Installation Instructions

### Installation Instructions:

1. Install the bottom screw into the wall. Next, slide the fixture into the screw and secure it in place.
2. Install the second screw through the white bracket on the top (2) to lock the unit in place.



### **NOTE:**

- If the sunlight is not sufficient, it may take longer to fully charge this fixture.
- To ensure this fixture charges properly, please be sure to install this fixture with the solar panel facing towards the sun.
- Please allow the solar panel to charge in bright, direct sunlight for at least 5 hours prior to first use.

— 2 —

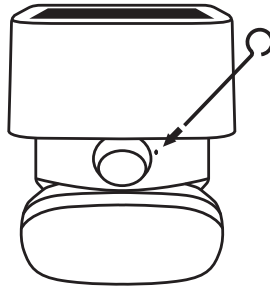


## Morris CAT#: 72534 - Installation Instructions

---

### Operating Instructions:

1. To turn on this fixture, insert the key pin (included) into the small hole on the front of the light and hold for 3 seconds.



2. Using the key pin, insert it into the same hole and quickly press to toggle between 3 available lighting modes. Which mode you've selected is indicated by the number of red light flashes displayed on the fixture:
  - Mode 1 (One Flash) - 50 lumen brightness during inactivity.
  - Mode 2 (Two Flashes) - The fixture is off during inactivity.
  - Mode 3 (Three Flashes) - 50 lumen brightness at all times. The motion sensor is disabled.
3. To shut off the fixture, insert the key pin (included) into the small hole on the front of the fixture and hold for 3 seconds. The fixture will flash once to confirm and power off.



⊘ **NOTE:**

- Do not install this fixture in an area that doesn't receive direct sunlight.
- Do not use 3rd party accessories to install this fixture.

⚠ **WARNING:**

- Keep this fixture away from any fire, oil or dangerous chemicals.
- This fixture should be installed by a **qualified electrician only**, following all national and local electrical code regulations.
- Disassembling or tampering with this fixture will void the warranty.
- If this fixture doesn't get a sufficient charge for 7 days, try charging the fixture in an area with stronger & brighter sunlight.
- To ensure this fixture continues to function properly, please clean the solar panel every 6 months or more frequently if the install area requires it.