

# 45 Series 4ft

Direct/Indirect  
Wall Mount/ Surface Mount Linear Fixture

## FEATURES & SPECIFICATIONS

### INTENDED USE

A linear 4 x 5 fixture for distinctive architectural lighting plans. Ideal for corridors, lobbies, and office areas, 4 x 5 Series fixtures can be installed individually or in a continuous run. Specially designed for direct/indirect lighting with snap in lensto hide the lamps or LED arrays. Ideal where downlight and uplight are required.

### SIZE W x L x H in inches (mm)

4ft. - 4" x 44.5" x 5.5"

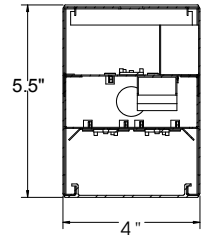
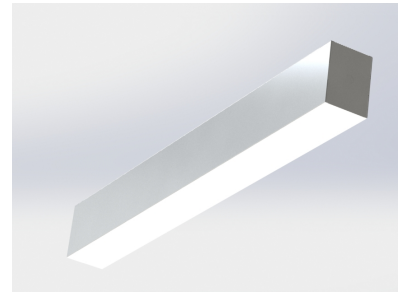
8ft. - 4" x 89" x 5.5"

### HOUSING

Die-formed and welded 22-gauge cold rolled steel Knockouts on ends allow continuous wireway mounting. Housing is specially designed for direct/indirect lighting with separating lamps compartments for each.

### DIFFUSERS

Fixture accepts various lenses or louvers. 4' and 8' units have a steel mullion to join two individual diffusers. Snap in reflector is ideal for uplight lens.



### MOUNTING

Fixtures can be surface mounted to the ceiling or pendant hung by stem or cable.

### TYPICAL OPTIONS AND ACCESSORIES

Cord sets, whips, occupancy sensors Hanging kits, Wire guards. Contact factory for additional options.

## ORDERING INFORMATION

### 4 FT

Example: 45WMW48LUR12WD24WDMV40KWH

45W	MW	48L	UR12WD24W	DMV	40K	WH	Configuration		
<b>Series</b>		<b>Length</b>		<b>Driver &amp; Voltage</b>					
45W Wall Mount 45P Pendant Mount		48L 48"		DMV Dimmable Driver 0-10V MV Electronic, Multivolt (120-277)					
		<b>Wattage &amp; Lumen</b>			<b>Color Temperature</b>	<b>Finish</b>			
		UR12WD24W Up Light 12 System Watts, Down Light 24 System Watts, 3600 Delivered Lumens			30K 3000K 35K 3500K 40K 4000K 50K 5000K	WH White BK Black SI Silver			
		UR18WD36W Up Light 18 System Watts, Down Light 36 System Watts, 5400 Delivered Lumens							
<b>Lens Material</b>									
MW Matte White Lens Only available for down light									
SF Snap In Frosted Acrylic Lens (85% transmission) Special for LEDs, Only available for uplight and downlight									
<b>Options</b>									
				HC301WH Cable kit with 4' Cable & Power Feed/Cable Incl. and White Canopy					
				HC302WH Cable kit with 12' Cable and Power feed/Cable Incl. and White Canopy					
				2SCS24WH Two Stem kits with 24" Stem, Canopy and Mounting hardware for a 4' fixture					

Notes \*Custom length available. Consult factory for additional information.

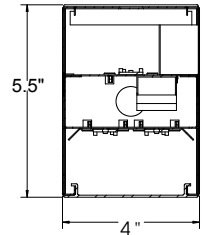
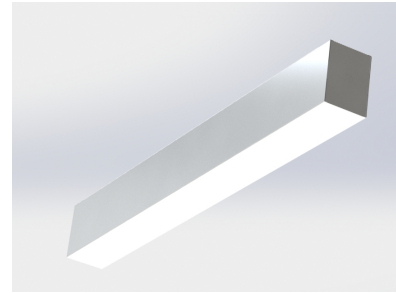
Catalog Number:
Notes:

# 45 Series 8ft

Direct/Indirect  
Wall Mount/ Surface Mount Linear Fixture

## DIMENSIONS

All dimensions are inches. Specifications subject to change without notice



## ORDERING INFORMATION

### 8 FT

Example: 45WMW96LUR24WD48WDMV40KWH

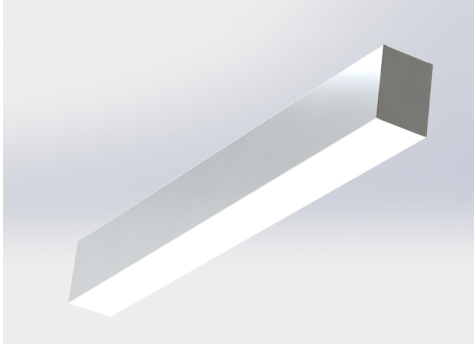
<b>45W</b>	<b>MW</b>	<b>96L</b>	<b>UR24WD48W</b>	<b>DMV</b>	<b>40K</b>	<b>WH</b>	
<b>Series</b>		<b>Length</b>	<b>Wattage &amp; Lumen</b>	<b>Driver &amp; Voltage</b>	<b>Color Temperature</b>	<b>Finish</b>	<b>Configuration</b>
45W Wall Mount 45P Pendant Mount		96L 96"	<b>UR24WD48W</b> Up Light 24 System Watts, Down Light 48 System Watts, 7200 Delivered Lumens <b>UR36WD72W</b> Up Light 36 System Watts, Down Light 72 System Watts, 10800 Delivered Lumens	DMV Dimmable Driver 0-10V MV Electronic, Multivolt (120-277)	30K 3000K 35K 3500K 40K 4000K 50K 5000K	WH White BK Black SI Silver	Blank Individual -B Beginner Run -E Ender Run -J Joiner
<b>Lens Material</b>				<b>Options</b>			
MW Matte White Lens Only available for down light				<b>HC301WH</b> Cable kit with 4' Cable & Power Feed/Cable Incl. and White Canopy			
SF Snap In Frosted Acrylic Lens (85% transmission) Special for LEDs, Only available for uplight and downlight				<b>HC302WH</b> Cable kit with 12' Cable and Power feed/Cable Incl. and White Canopy			
				<b>2SCS24WH</b> Two Stem kits with 24" Stem, Canopy and Mounting hardware for a 4' fixture			

Notes \*Custom length available. Consult factory for additional information.

Catalog Number:
Notes:

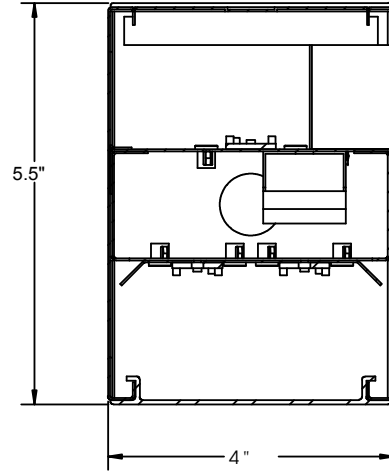
# 45 Series

Direct/Indirect  
Wall Mount/ Surface Mount Linear Fixture

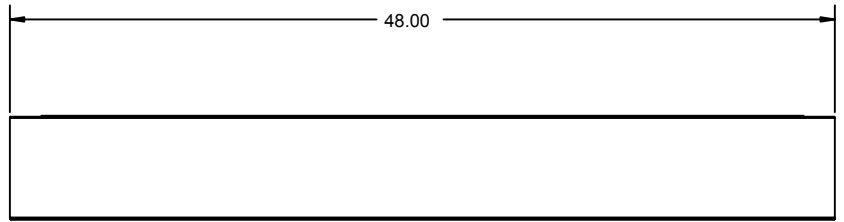
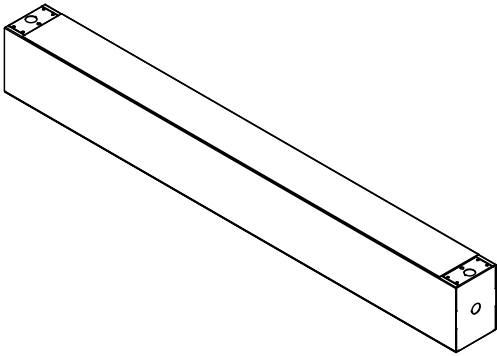


## DIMENSIONS

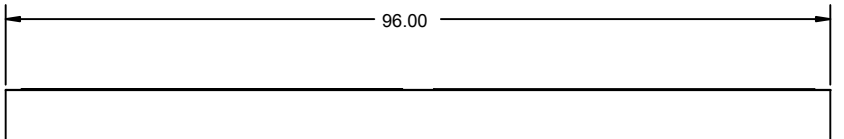
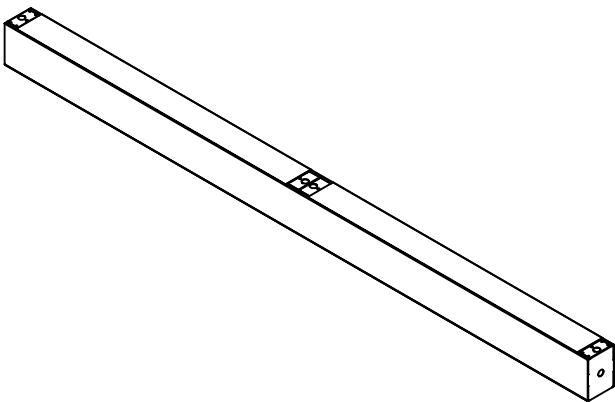
All dimensions are inches. Specifications subject to change without notice



48L Drawing



96L Drawing



---

Catalog Number:
Notes: