



Texas Fluorescents
Reinvented

CATALOG#: _____
PROJECT: _____
TYPE: _____

Series 201

LED Narrow 5.75" Wide Wraparound Surface Mount

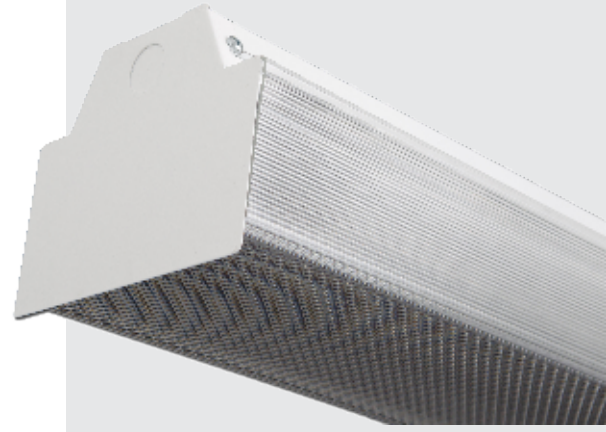
This Series 201 wraparound is suitable for a wide variety of applications, such as hallways and smaller spaces with corners. It has a narrow cross-section, a full wireway for more uniform light distribution and a clear acrylic #8 pattern lens. The Series 201 features chaise nipple end caps for continuous run layouts.

CONSTRUCTION

Housing is 22 gauge baked white enamel cold-rolled steel body and ends. 20 gauge can be supplied. Wiring knockouts are provided on back and end of housing. Lens is held with "lift-and-shift" method. Uses a crystal clear prismatic diffuser extruded from 100% virgin acrylic that will maintain its color under normal conditions, indefinitely.

MOUNTING

Surface mount or suspended.



DIMENSIONS

4 ft.- 48L x 5.75W x 4.60H
8 ft.- 96L x 5.75W x 4.60H

FEATURES & BENEFITS

- Available in 4ft and 8ft
- Easy Installations
- Ideal for kitchen, laundry rooms, garage or office
- Variety of lumen packages / wattages through use of programmable drivers
- Multiple color temperatures available (3000K, 3500K, 4000K and 5000K); consult factory for RGBW option
- Emergency battery backup available
- CRI: >80 standard, 90 optional
- L70: >50,000 hrs
- Dimming: 0-10V 120-277V standard, 120 ELV/TRIAC optional
- Power factor: >0.90
- Suitable for dry and damp locations
- 5 year warranty





Texas Fluorescents
Reinvented

CATALOG#: _____

PROJECT: _____

TYPE: _____

Series 201

LED Narrow 5.75" Wide Wraparound
Surface Mount

ORDER INFORMATION

Factory at your fingertips. Fill in the blanks to create your part number or create a custom configuration.

* W * L

SERIES	LENS MATERIAL	LENGTH	WATTAGE* & LUMENS*		DRIVER		COLOR**		
201	A Clear Prismatic Acrylic #8 Pattern	48L 48"	S24W2800L	24 Watts 2800 Lumens	DMV 0-10V Dimming G120 ELV/TRIAC Dimming at 120V only D1MV 0-10V Dimming (dim to 1%)	30K 3000K 80CRI 35K 3500K 80CRI 40K 4000K 80CRI 50K 5000K 80CRI 930K 3000K 90CRI 935K 3500K 90CRI	940K 4000K 90CRI 950K 5000K 90CRI		
			S32W4000L	32 Watts 4000 Lumens					
			S48W5700L	48 Watts 5700 Lumens					
			H72W8700L	72 Watts 8700 Lumens					
			96L 96"					S48W5600L	48 Watts 5600 Lumens
			S65W8000L	65 Watts 8000 Lumens					
		S97W11400L	97 Watts 11400 Lumens						

OPTIONS	
WP	6ft. 3 wire 18 gauge whip
WP10	6ft. 4 wire 18 gauge whip
WG	Wire Guard

Note:

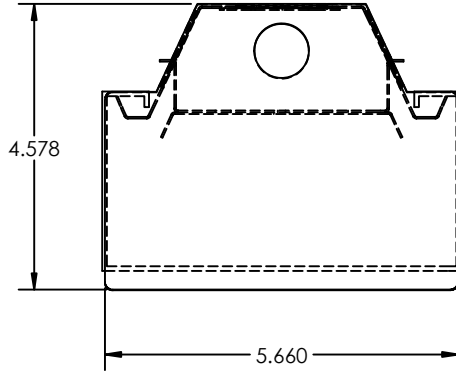
*Programmable LED drivers allow custom configured wattages and corresponding lumens.

** Consult factory 5000K 90CRI availability.

We reserve the right to change design, materials, LEDs and finish in any way that will not alter installed appearance or reduce function and performance.

DRAWINGS & IMAGES

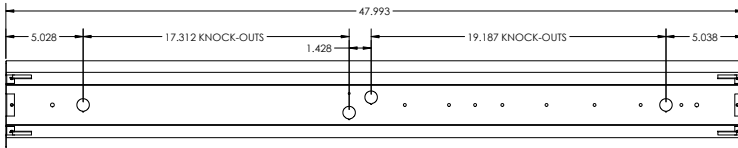
END



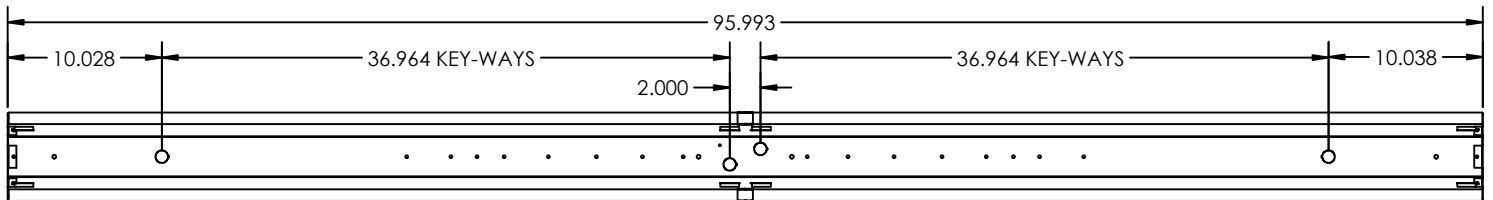
LENS OPTIONS

SERIES	DESCRIPTIONS
0201A48L	Replacement Acrylic lens for 48"L
0201A96L	Replacement Acrylic lens for 96"L

48L BACK

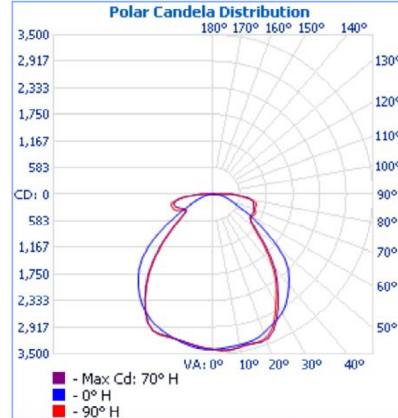
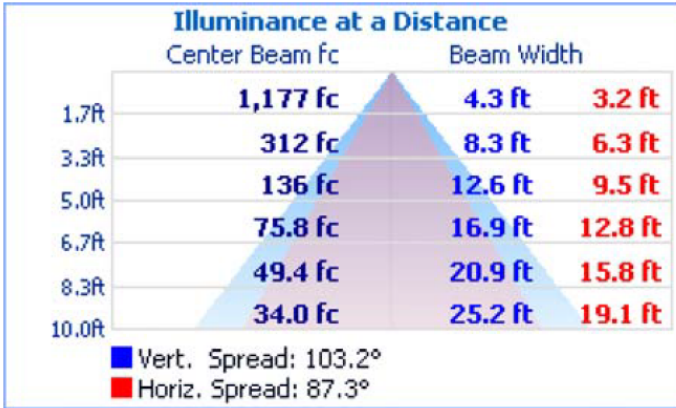


96L BACK



PHOTOMETRICS

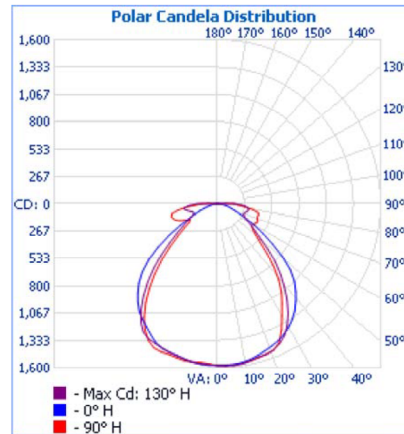
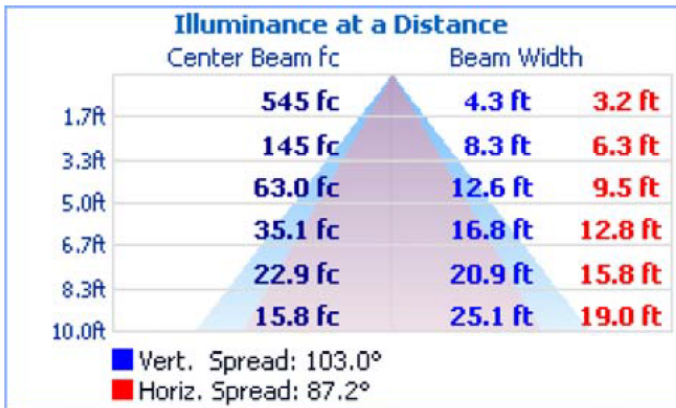
201A48LH72W8700LDMV40K



Zonal Lumen Summary

Zone	Lumens	% Luminaire
0-30	2,715.3	31%
0-40	4,385.0	50.1%
0-60	6,855.0	78.3%
60-90	1,802.1	20.6%
70-100	1,184.1	13.5%
90-120	97.0	1.1%
0-90	8,657.1	98.9%
90-180	97.0	1.1%
0-180	8,754.1	100%

201A48LS32W4000LDMV40K



Zonal Lumen Summary

Zone	Lumens	% Luminaire
0-30	1,263.2	31.6%
0-40	2,043.7	51.2%
0-60	3,165.5	79.2%
60-90	787.6	19.7%
70-100	520.8	13%
90-120	41.4	1%
0-90	3,953.1	99%
90-180	41.4	1%
0-180	3,994.4	100%