

2" LED Trimless Downlight

Installation Instructions



- IMPORTANT** Read all instructions before installing fixtures. Keep for future reference.
- SAFETY** For your safety, this fixture must be wired in accordance to local electrical codes and ordinances. All work should be done by a qualified electrician.
- WARNING** Make certain power is OFF from the electrical panel before starting installation or attempting any maintenance. Indoor installation only.

Tools Required

- Saw
- Measuring tape
- Electrical wiring (use type and gauge suitable for application to connect the fixtures)

Pre-Installation

- Turn power OFF from the electrical panel before starting installation.
- Locate a suitable position to plate the fixture and open in accordance to the cut-hole dimensions (refer to Hole Cut Table for appropriate size)
- Run electrical wire from the switch (power supply) through the mounting hole use NMD90 Romex or BX cable.
- Align the inside edge of the Zero Clearance plaster frame to the drywall hole and screw in place. (Fig. 1)
- Plaster over the plaster frame, be careful not to fill past raised rim. (Fig. 2)

Driver Wiring

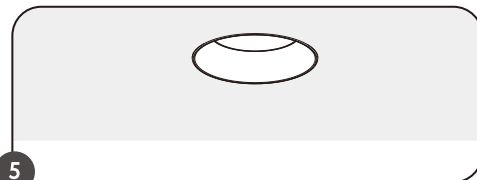
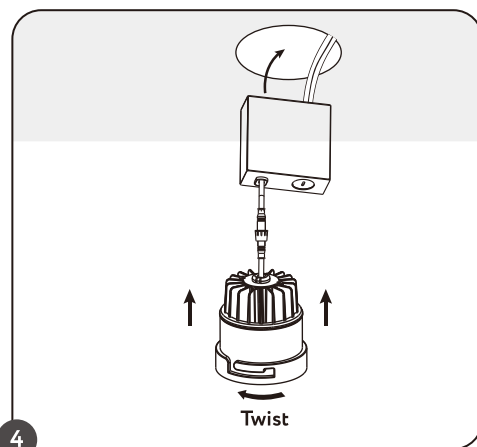
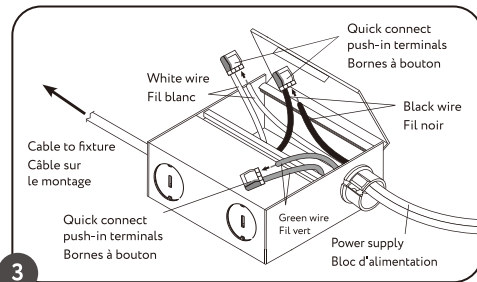
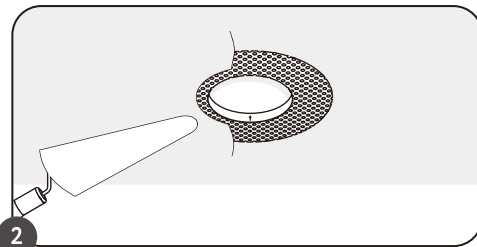
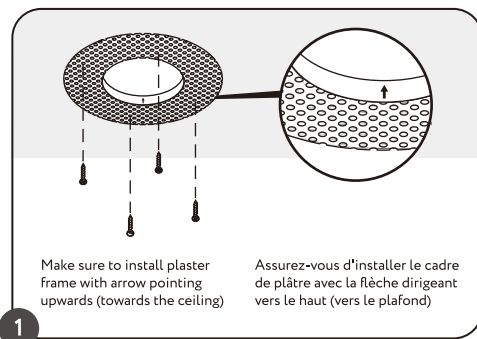
- Open the hardwire box swing cover and remove the appropriate knockouts.
- Insert the electrical supply cable through the knockout and secure with a cable connector.
- Using wire nuts, connect green ground wire to green wire on box. Connect white to white wire on box. Connect black wire to black wire on box. (Fig. 3)
- Place all wiring and connections back in to the box and close the cover.
- Insert hardwire box through the mounting hole. (Fig. 4)

Fixture Installation

- Connect the fixture to the hardwire box by inserting and twisting the male/female connectors. (Fig. 3)
- Insert the fixture to plaster frame, secure the lamp by twisting the fixture appropriately to the plaster frame. (Fig. 4)
- Once assembly is complete, turn on power to confirm fixture is working properly.

Compatible Dimmers

BRAND	SERIES	MODEL	LOAD	DIMMABILITY	BRAND	SERIES	MODEL	LOAD	DIMMABILITY
LUTRON	ARIADNI	AYCL-153P	150W	OK	LUTRON	TOGGLER	TG-600P	600W	OK
	DIVA	DV-600PR	600W	OK		TOGGLER	TGCL-153P	150W	OK
	DIVA	DVCL-153P	150W	OK		CASETA	WIRELESS DIMMER	150W	OK
	MAESTRO	MACL-153MH	600W	OK	LEVITON	SURESLIDE	6633	600W	OK
	MAESTRO WIRELESS	MRF2-6CL	150W	OK		SURESLIDE DECORA	6674	600W	20-100%
	ROTARY	D-600P	600W	OK		TRIMATRON	6602	600W	20-100%
	ELECTRONIC (ELV)	NTELV-300P	600W	OK		ILLVMATECH	IPL06	600W	OK
	SKYLARK	S-600P	600W	OK	LEGRAND	ADORNE	ADTP703TU	700W	20-100%
	SKYLARK CONTOUR	CT-600P	600W	OK		HARMONY	H703PTW	700W	OK
	SKYLARK CONTOUR	CLCL-153P	153W	OK	COOPER	ASPIRE	9540	1000W	OK
				DEVINE		DAL06P	300W	OK	



Hole Cut Size / Taille Trou Découpé	
2" Round	ø 2 3/5 (67mm)
3.5" Round	ø 3 1/4 (82mm)
3.5" Square	ø 4 3/4 (120mm)
4" Round	ø 3 7/8 (98mm)

