

131 2' x 4'

LED Lensed Troffer, Grid Mount

FEATURES AND SPECIFICATIONS

Intended Use

Specification grade, low profile troffer meets an almost limitless range of applications where energy efficiency, high light output, durable construction and unobtrusive styling is desired. Troffer is ideal for all commercial and industrial buildings requiring general illumination with recessed configurations. LED version is ideal where maintenance, energy savings and color rendering are particularly crucial.

Features Overview

The 131 Series LED Troffers feature a choice of LED arrays and drivers to meet a range of full distribution output and wattage choices. With the 131 LED Series, flexibility is a key feature. No longer need to sacrifice output, color or energy usage with this series, you can specify exactly what you need. Choice of four color temperatures. Choice of dimming driver with 0 to 10 Volt operation. Full selection of diffusers available along with other options.

Shielding

Standard lens is high transmission pattern #12 acrylic (A12) for light diffusion which maximize light output. Other lens are available and may be specified. See below options.

Size W x L x H in inches

23.75W x 48.0L x 4.0Dp

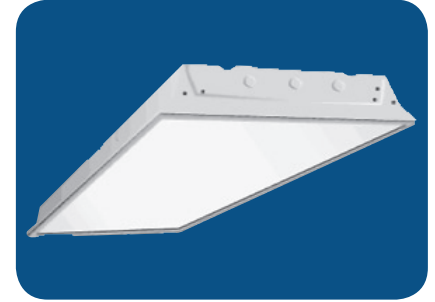
LED Engine

Programmable Driver changes LED Array output to provide different outputs.

Materials & Features

Housing is die-formed and embossed code 22 gage steel. Finish is high reflectance baked white enamel. Wiring knockouts are provided on back and end of housing. Driver cover or reflector snaps into place; no tools required for ballast access. Lens is held with a hinged steel door frame; frame hinges downward on either side and is held closed by two positive cam latched.

- POST PAINTED POWDER COAT FINISH on certain versions
- Shallow design for low clearance plenums
- Clear 0.10thk A12 acrylic lens is standard; many options available
- Flush steel hinges from either side; field reversible
- Access plate to simplify installation



Mounting & Installation

An access plate is furnished with each recessed fixture for fast wiring connections without necessity to pen the fixture or wireway. Designed for recessed installation in standard inverted tee grid ceiling, recessed installation in hard ceilings with FIK kits (sold separately), surface mount available with shroud kit (sold as complete item).

Warranty

Five Year Warranty. See Terms and Conditions.

Typical Options and Accessories

Emergency ballasts, whips, regressed doors, wire guards, frame kits, and lenses. See options page at the end on the T02Grid section, or contact factory for more details.

ORDERING INFORMATION

Example: 131A24LS32W3450LDMV40K

STANDARD

131	A	24L	S32W3450L	DMV	40K
Series		Size	Wattage and Lumen	Driver	Color Temperature
131 LED Lensed Troffer, Grid Mount		24L 2 x 4	S32W3450L 32 System Watts, 3450 Delivered Lumens S48W4800L 48 System Watts, 4800 Delivered Lumens S57W5400L 57 System Watts, 5400 Delivered Lumens	DMV 0-10V MV ? gfl - Half 120V-277V	30K 3000K 35K 3500K 40K 4000K 50K 5000K
Lens Material			Options		
A	Prismatic Acrylic #12 Pattern				
A.125	Prismatic Acrylic #12 Pattern 1/8"				
MW	Matte White Acrylic				
SP1	Specular Parabolic Louver 1/2" x 1/2" x 3/8"				
SP4	Specular Parabolic Louver 3/4" x 3/4" x 1/2"				
SP2	Specular Parabolic Louver 1 1/2" x 1 1/2" x 1"				
PLA	White Cubed Acrylic Louver 1/2" x 1/2" x 3/8"				
FR	Frosted Acrylic Smooth Lens .04", 100% Dura Frost				
DFFR	Door Frame with White Frosted Acrylic Lens				
	WP	6 ft. 3 wire 18 gauge whip			
	WP10	6 ft. 4 wire 18 gauge whip			

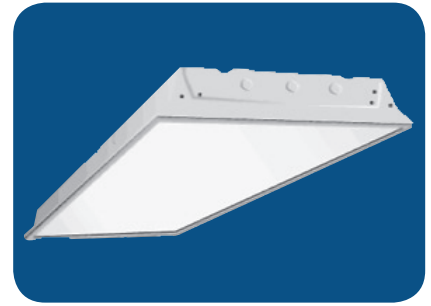
*Consult for more options



Catalog Number:
Notes:

131 2' x 4'

LED Lensed Troffer, Grid Mount



ORDERING INFORMATION

HIGH OUTPUT

Example: 131A24LH72W7000LDMV40K

131	A	24L	H72W7000L	DMV	40K	
Series		Size	Wattage and Lumen	Driver	Color Temperature	
131 LED Lensed Troffer, Grid Mount		24L 2 x 4	H72W7000L 72 System Watts, 7000 Delivered Lumens	DMV 0-10V MV ? gfl - Half 120V-277V	30K 3000K 35K 3500K 40K 4000K 50K 5000K	
Lens Material					Options	
A	Prismatic Acrylic #12 Pattern				WP	6 ft. 3 wire 18 gauge whip
A.125	Prismatic Acrylic #12 Pattern 1/8"				WP10	6 ft. 4 wire 18 gauge whip
MW	Matte White Acrylic					
SP1	Specular Parabolic Louver 1/2" x 1/2" x 3/8"					
SP4	Specular Parabolic Louver 3/4" x 3/4" x 1/2"					
SP2	Specular Parabolic Louver 1 1/2" x 1 1/2" x 1"					
PLA	White Cubed Acrylic Louver 1/2" x 1/2" x 3/8"					
FR	Frosted Acrylic Smooth Lens .04", 100% Dura Frost					
DFFR	Door Frame with White Frosted Acrylic Lens					

*Consult for more options

Catalog Number:
Notes:



FLUORESCENTS

FEATURES AND SPECIFICATIONS

Intended Use

Specification grade, low profile troffer meets an almost limitless range of applications where energy efficiency, high light output, durable construction and unobtrusive styling is desired. Troffer is ideal for all commercial and industrial buildings requiring general illumination with recessed configurations. LED version is ideal where maintenance, energy savings and color rendering are particularly crucial.

Features Overview

The 131 Series LED Troffers feature a choice of LED arrays and drivers to meet a range of full distribution output and wattage choices. With the 131 LED Series, flexibility is a key feature. No longer need to sacrifice output, color or energy usage with this series, you can specify exactly what you need. Choice of four color temperatures. Choice of dimming driver with 0 to 10 Volt operation. Full selection of diffusers available along with other options.

Shielding

Standard lens is high transmission pattern #12 acrylic (A12) for light diffusion which maximize light output. Other lens are available and may be specified. See below options.

Size W x L x H in inches

23.75W x 24.0L x 4.0Dp

LED Engine

Programmable Driver changes LED Array output to provide different outputs.

Materials & Features

Housing is die-formed and embossed code 22 gage steel. Finish is high reflectance baked white enamel. Wiring knockouts are provided on back and end of housing. Driver cover or reflector snaps into place; no tools required for ballast access. Lens is held with a hinged steel door frame; frame hinges downward on either side and is held closed by two positive cam latched.

- POST PAINTED POWDER COAT FINISH on certain versions
- Shallow design for low clearance plenums
- Clear 0.10thk A12 acrylic lens is standard; many options available
- Flush steel hinges from either side; field reversible
- Access plate to simplify installation

131 2' x 2'

LED Lensed Troffer, Grid Mount



Mounting & Installation

An access plate is furnished with each recessed fixture for fast wiring connections without necessity to pen the fixture or wireway. Designed for recessed installation in standard inverted tee grid ceiling, recessed installation in hard ceilings with FIK kits (sold separately), surface mount available with shroud kit (sold as complete item).

Warranty

Five Year Warranty. See Terms and Conditions.

Typical Options and Accessories

Emergency ballasts, whips, regressed doors, wire guards, frame kits, and lenses. See options page at the end on the T02Grid section, or contact factory for more details.

ORDERING INFORMATION

Example: 131A22LS28W2700LDMV40K

STANDARD

131	A	22L	S28W2700L	DMV	40K
Series		Size	Wattage and Lumen	Driver	Kelvin Temperature
131 LED Lensed Troffer, Grid Mount		22L 2 x 2	S24W2400L 24 System Watts, 2400 Delivered Lumens S28W2700L 28 System Watts, 2700 Delivered Lumens S35W3200L 35 System Watts, 3200 Delivered Lumens	DMV 0-10V MV ? gff - Ha'f 120V-277V	30K 3000K 35K 3500K 40K 4000K 50K 5000K
Lens Material					Options
A	Prismatic Acrylic #12 Pattern				WP 6 ft. 3 wire 18 gauge whip WP10 6 ft. 4 wire 18 gauge whip
A.125	Prismatic Acrylic #12 Pattern 1/8"				
MW	Matte White Acrylic				
SP1	Specular Parabolic Louver 1/2" x 1/2" x 3/8"				
SP4	Specular Parabolic Louver 3/4" x 3/4" x 1/2"				
SP2	Specular Parabolic Louver 1 1/2" x 1 1/2" x 1"				
PLA	White Cubed Acrylic Louver 1/2" x 1/2" x 3/8"				
FR	Frosted Acrylic Smooth Lens .04", 100% Dura Frost				
DFFR	Door Frame with White Frosted Arcylic Lens				

*Consult for more options

Texas Fluorescents
 2055 Luna Rd. Suite 142 Carrollton, TX 75006
 Phone: 972-247-3171 Fax: 972-247-0200
 www.texasfluorescents.com email: sales@texasfluorescents.com

Catalog Number:
Notes:





T E X A S
F L U O R E S C E N T S

131 2' x 2'
LED Lensed Troffer, Grid Mount



ORDERING INFORMATION

Example: 131A22LH48W4350LDMV40K

HIGH OUTPUT

131	A	22L	H48W4350L	DMV	40K
Series		Size	Wattage and Lumen	Driver	Kelvin Temperature
131 LED Lensed Troffer, Grid Mount		22L 2 x 2	H48W4350L 48 System Watts, 4350 Delivered Lumens	DMV 0-10V MV ? gfl - Half 120V-277V	30K 3000K 35K 3500K 40K 4000K 50K 5000K
Lens Material					Options
A	Prismatic Acrylic #12 Pattern				WP 6 ft. 3 wire 18 gauge whip WP10 6 ft. 4 wire 18 gauge whip
A.125	Prismatic Acrylic #12 Pattern 1/8"				
MW	Matte White Acrylic				
SP1	Specular Parabolic Louver 1/2" x 1/2" x 3/8"				
SP4	Specular Parabolic Louver 3/4" x 3/4" x 1/2"				
SP2	Specular Parabolic Louver 1 1/2" x 1 1/2" x 1"				
PLA	White Cubed Acrylic Louver 1/2" x 1/2" x 3/8"				
FR	Frosted Acrylic Smooth Lens .04", 100% Dura Frost				
DFFR	Door Frame with White Frosted Acrylic Lens				

*Consult for more options



Texas Fluorescents
2055 Luna Rd. Suite 142 Carrollton, TX 75006
Phone: 972-247-3171 Fax: 972-247-0200
www.texasfluorescents.com email: sales@texasfluorescents.com

Catalog Number:
Notes:

131 1' x 4'

LED Lensed Troffer, Grid Mount

FEATURES AND SPECIFICATIONS

Intended Use

Specification grade, low profile troffer meets an almost limitless range of applications where energy efficiency, high light output, durable construction and unobtrusive styling is desired. Troffer is ideal for all commercial and industrial buildings requiring general illumination with recessed configurations. LED version is ideal where maintenance, energy savings and color rendering are particularly crucial.

Features Overview

The 131 Series LED Troffers feature a choice of LED arrays and drivers to meet a range of full distribution output and wattage choices. With the 131 LED Series, flexibility is a key feature. No longer need to sacrifice output, color or energy usage with this series, you can specify exactly what you need. Choice of four color temperatures. Choice of dimming driver with 0 to 10 Volt operation. Full selection of diffusers available along with other options.

Shielding

Standard lens is high transmission pattern #12 acrylic (A12) for light diffusion which maximize light output. Other lens are available and may be specified. See below options.

Size W x L x H in inches

23.75W x 24.0L x 4.0Dp

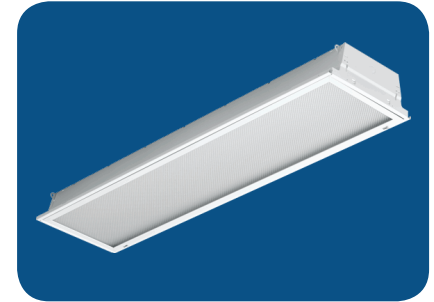
LED Engine

Programmable Driver changes LED Array output to provide different outputs.

Materials & Features

Housing is die-formed and embossed code 22 gage steel. Finish is high reflectance baked white enamel. Wiring knockouts are provided on back and end of housing. Driver cover or reflector snaps into place; no tools required for ballast access. Lens is held with a hinged steel door frame; frame hinges downward on either side and is held closed by two positive cam latched.

- POST PAINTED POWDER COAT FINISH on certain versions
- Shallow design for low clearance plenums
- Clear 0.10thk A12 acrylic lens is standard; many options available
- Flush steel hinges from either side; field reversible
- Access plate to simplify installation



Mounting & Installation

An access plate is furnished with each recessed fixture for fast wiring connections without necessity to pen the fixture or wireway. Designed for recessed installation in standard inverted tee grid ceiling, recessed installation in hard ceilings with FIK kits (sold separately), surface mount available with shroud kit (sold as complete item).

Warranty

Five Year Warranty. See Terms and Conditions.

Typical Options and Accessories

Emergency ballasts, whips, regressed doors, wire guards, frame kits, and lenses. See options page at the end on the T02Grid section, or contact factory for more details.

ORDERING INFORMATION

Example: 131A14LS32W3450LDMV40K

STANDARD

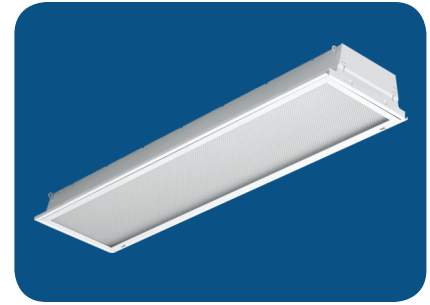
131	A	14L	S32W3450L	DMV	40K
Series		Size	Wattage and Lumen	Driver	Kelvin Temperature
131 LED Lensed Troffer, Grid Mount		14L 1 x 4	S32W3450L 32 System Watts, 3450 Delivered Lumens S48W4800L 48 System Watts, 4800 Delivered Lumens S57W5400L 57 System Watts, 5400 Delivered Lumens	DMV 0-10V MV ? gfl - Half 120V-277V	30K 3000K 35K 3500K 40K 4000K 50K 5000K
Lens Material					
A	Prismatic Acrylic #12 Pattern				
A.125	Prismatic Acrylic #12 Pattern 1/8"				
MW	Matte White Acrylic				
SP1	Specular Parabolic Louver 1/2" x 1/2" x 3/8"				
SP4	Specular Parabolic Louver 3/4" x 3/4" x 1/2"				
SP2	Specular Parabolic Louver 1 1/2" x 1 1/2" x 1"				
PLA	White Cubed Acrylic Louver 1/2" x 1/2" x 3/8"				
FR	Frosted Acrylic Smooth Lens .04", 100% Dura Frost				
DFFR	Door Frame with White Frosted Acrylic Lens				
Options					
WP	6 ft. 3 wire 18 gauge whip				
WP10	6 ft. 4 wire 18 gauge whip				

*Consult for more options



Catalog Number:
Notes:

131 1' x 4'
LED Lensed Troffer, Grid Mount



ORDERING INFORMATION

HIGH OUTPUT

Example: 131A14LH72W7000LDMV40K

131	A	14L	H72W7000L	DMV	40K	
Series		Size	Wattage and Lumen	Driver	Kelvin Temperature	
131 LED Lensed Troffer, Grid Mount		14L 1 x 4	H72W7000L 72 System Watts, 7000 Delivered Lumens	DMV 0-10V MV ? gñl - Half 120V-277V	30K 3000K 35K 3500K 40K 4000K 50K 5000K	
Lens Material					Options	
A	Prismatic Acrylic #12 Pattern				WP	6 ft. 3 wire 18 gauge whip
A.125	Prismatic Acrylic #12 Pattern 1/8"				WP10	6 ft. 4 wire 18 gauge whip
MW	Matte White Acrylic					
SP1	Specular Parabolic Louver 1/2" x 1/2" x 3/8"					
SP4	Specular Parabolic Louver 3/4" x 3/4" x 1/2"					
SP2	Specular Parabolic Louver 1 1/2" x 1 1/2" x 1"					
PLA	White Cubed Acrylic Louver 1/2" x 1/2" x 3/8"					
FR	Frosted Acrylic Smooth Lens .04", 100% Dura Frost					
DFFR	Door Frame with White Frosted Arcylic Lens					

*Consult for more options



Catalog Number:
Notes: