

ITEM NO.	QTY.	PART NO.	DESCRIPTION
1	1	SDCFCAST755	SDCF CASTING
2	1	DC7517A	SPOOL
3	1	PC58	PARKER O-RING 3-910
4	1	SF303TM	SPOOL
5	2	SF304	QUAD RING
6	2	SF305	WIPER
7	1	SF306	RETAINER
8	1	SF317D	PLUG
9	1	SF318B	M. SPOOL
10	1	SF319	SPRING
11	2	SF326	.125 BALL
12	2	SF394	PLUG, SHUTTLE
13	2	SF395	O-RING, 2-006
14	2	SF396	PARBAK 8-006
15	2	SF397	PLUG
16	1	SDC-F1	FRICTION DETENT
17	1	SDCF-CART	RELIEF SUB ASSEMBLY
18	1	SDC-HL	HANDLE KIT
19	1	P1654	WARNING TAG
20	1	P1740	NAME TAG

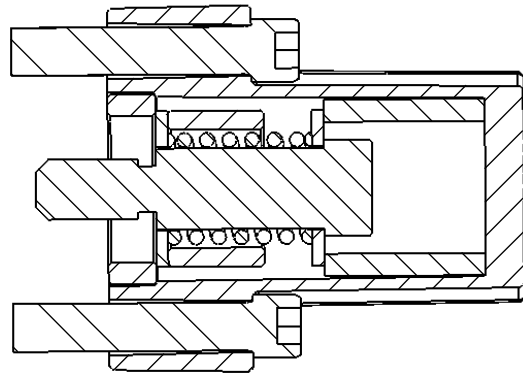
REV.	DATE	DESCRIPTION

BRAND HYDRAULICS CO., INC

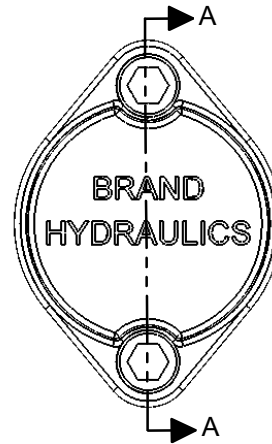
2332 SOUTH 25TH STREET, OMAHA NEBRASKA 68105

TITLE: SDCF DIRECTIONAL CONTROL VALVE	MATERIAL: -
--	-------------

STANDARD TOLERANCE UNLESS NOTED: 0.00 ± 0.010 (0.015 GCI) 0.000 ± 0.005 (0.010 GCI) ◎ = .005 TIR FRACTION ± 1/32 ANGLE ± 2° DIMENSIONS ARE IN INCHES	P/N ENDING IN "UF" HAVE NOT RECEIVED FINISH OPERATIONS FINISHING SPECIFICATIONS: HEAT TREAT: -±2RC X - √ GRIND: - PLATE: -	DRAWN BY: JCR/IG DATE: 07/17/2007	PART NO: SDCF755TM124LF1
		APRVD BY: APRVD DATE: SCALE: 1:2 FORMAT - B	

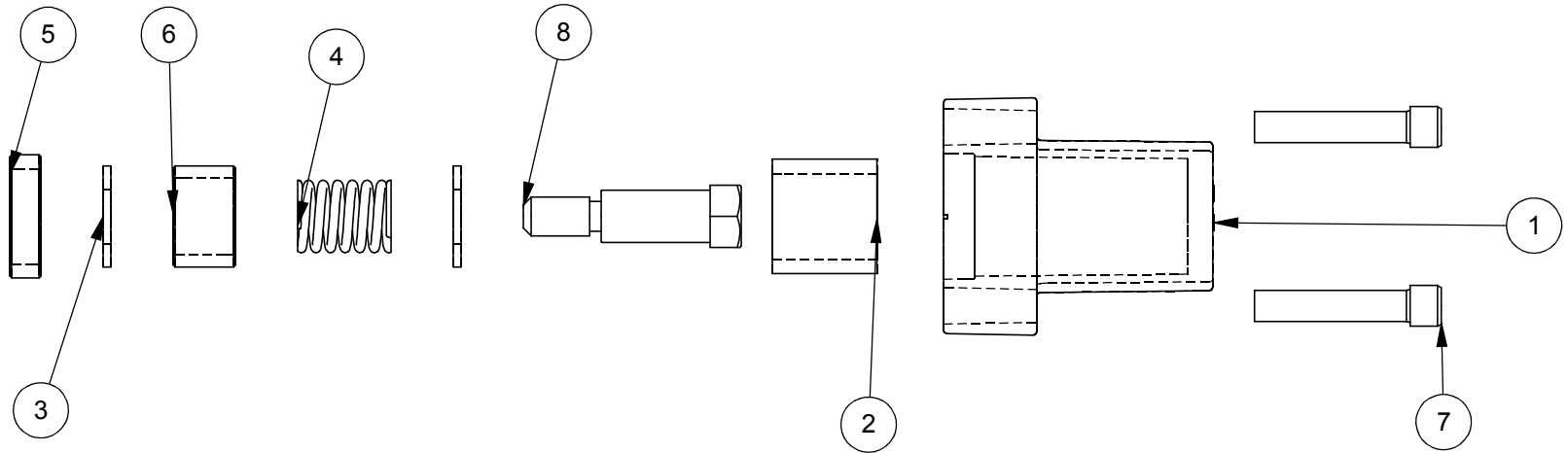


SECTION A-A
SCALE 1:1



ITEM #	QTY.	FILE #	PART #	DESCRIPTION
1	1	SF477	SF477	ENDCAP
2	1	SF484	SF484	SPACER
3	2	SF328A	SF328A	WASHER
4	1	SF314B	SF314B	SPRING
5	1	SF315	SF315	SPACER
6	1	SF374	SF374	SPACER
7	2	SF486	SF486	ALLEN SCREW
8	1	SF327A	SF327A	BOLT

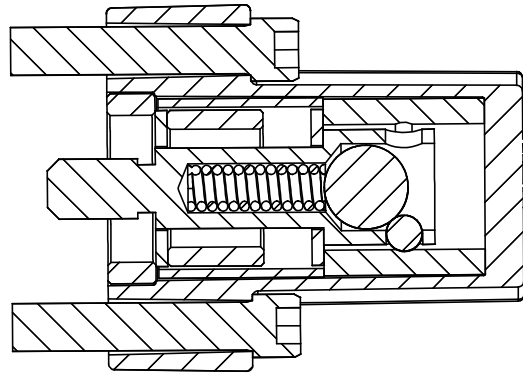
NOTE: USE 242 (BLUE LOCTITE) ON SF327A WHEN ASSEMBLING



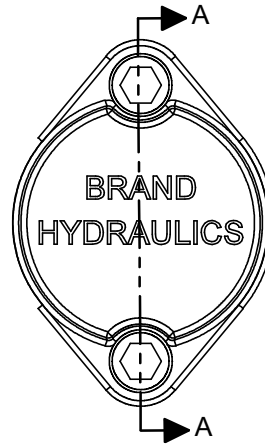
REV.	DATE	DESCRIPTION
A	11/10/03	CHANGED DRAWING TO REFLECT SF477 ENDCAP

BRAND HYDRAULICS CO., INC
2332 SOUTH 25TH STREET, OMAHA NEBRASKA 68105

TITLE: SPRING CENTERING FOR AO/SDC/SDCF/TS		MATERIAL: -	
STANDARD TOLERANCE UNLESS NOTED: 0.00 ± 0.010 (0.015 GCI) 0.000 ± 0.005 (0.010 GCI) ◎ = .005 TIR FRACTION ± 1/32 ANGLE ± 2° DIMENSIONS ARE IN INCHES	P/N ENDING IN "UF" HAVE NOT RECEIVED FINISH OPERATIONS FINISHING SPECIFICATIONS: HEAT TREAT: - ±2RC X - ∇ GRIND: - PLATE: -	DRAWN BY: JB	PART NO:
		DATE: 11/10/03	SDC-S
		APRV'D BY:	
		SCALE: 1:1.5	

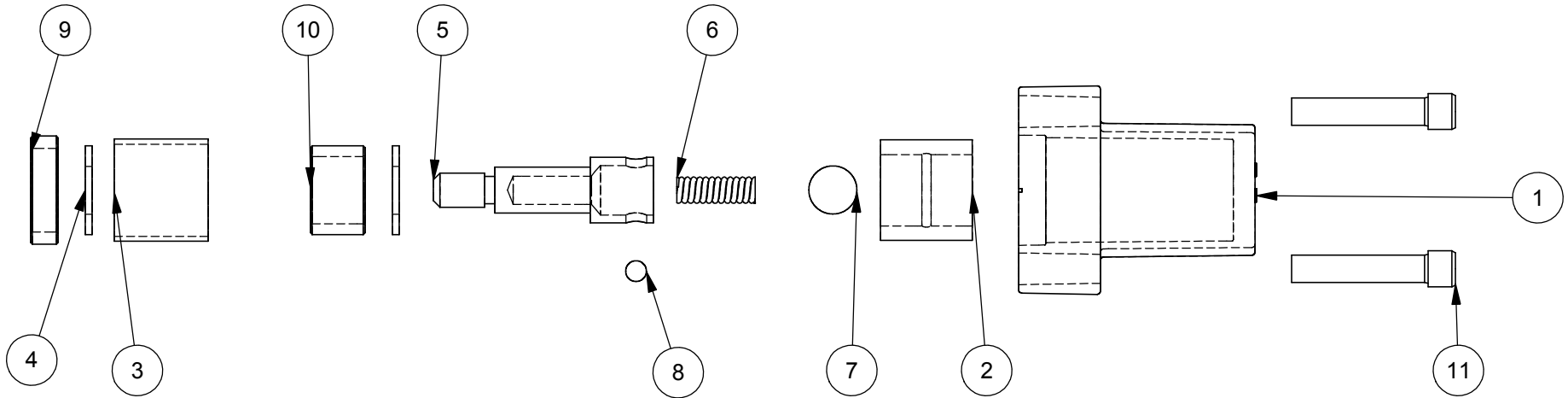


SECTION A-A
SCALE 1 : 1



ITEM #	QTY.	FILE #	PART #	DESCRIPTION
1	1	SF477	SF477	ENDCAP
2	1	SF479	SF479	FRICTION SLEEVE
3	1	SF483	SF483	SPACER
4	2	SF328A	SF328A	WASHER
5	1	SF478	SF478	HOUSING
6	1	SF491	SF491	SPRING
7	1	B5057	B5057	7/16 BALL
8	1	DC7604	DC7604	3/16 BALL
9	1	SF315	SF315	SPACER
10	1	SF374	SF374	SPACER
11	2	SF486	SF486	ALLEN SCREW

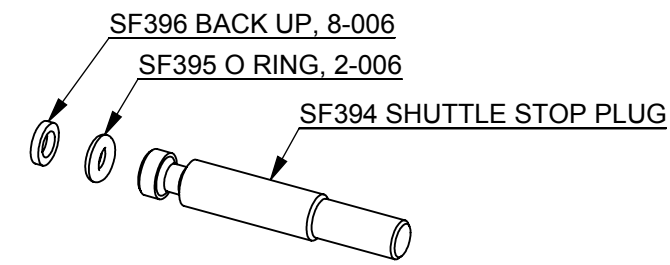
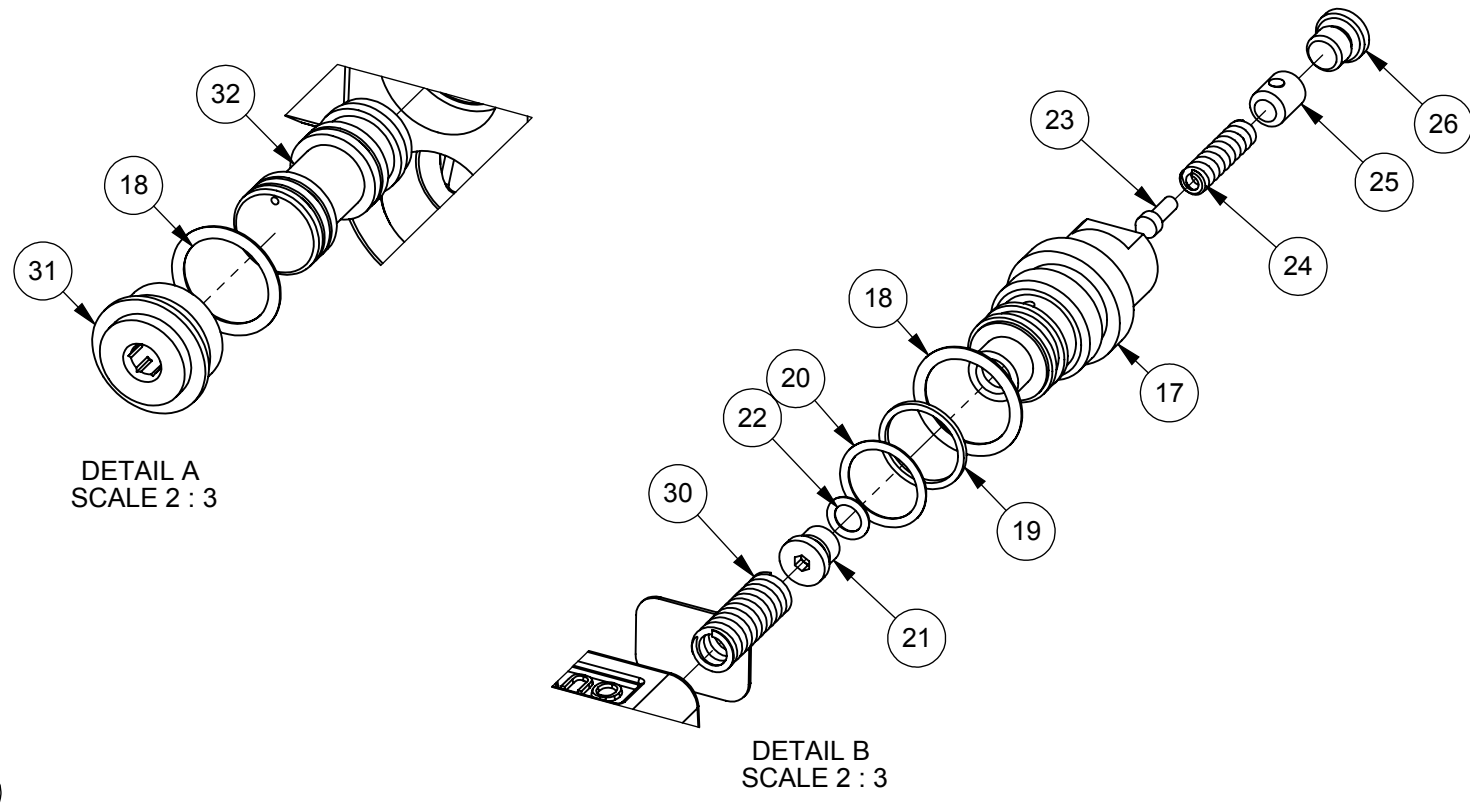
NOTE: USE 242 (BLUE LOCTITE) ON SF478 WHEN ASSEMBLING



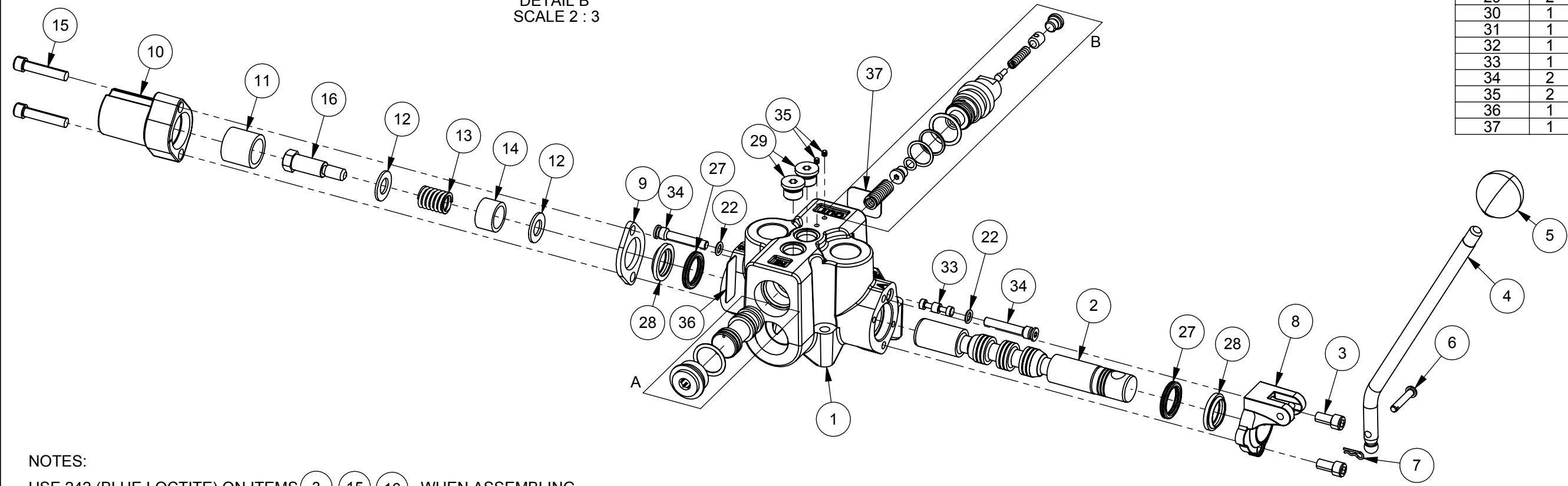
REV.	DATE	DESCRIPTION
A	11/20/00	DELETED SF384 & ADDED EXPLODED VIEW
B	11/10/03	CHANGED ASSEMBLY TO NEW DESIGN

BRAND HYDRAULICS CO., INC
2332 SOUTH 25TH STREET, OMAHA NEBRASKA 68105

TITLE: FRICTION DETENT FOR AO/SDC/SDCF/TS		MATERIAL -	
STANDARD TOLERANCE UNLESS NOTED: 0.00 ± 0.010 (0.015 GCI) 0.000 ± 0.005 (0.010 GCI) ◎ = .005 TIR FRACTION ± 1/32 ANGLE ± 2°	HEAT TREATMENT:- ±2RC	DRAWN BY JB	FILENAME SDC-F1
	HEAT TREATMENT DEPTH: - in	DATE 11/10/03	PART NO.
	GRIND: - ±.0002ϕ & TAPER	SCALE 1:1.5	SDC-F1
PLATE: - ±.0002ϕ TAPER			



NOTE: OLD STYLE SHUTTLE STOP (FOR REFERENCE ONLY)



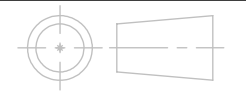
ITEM NO.	QTY.	P.N.	DESCRIPTION
1	1	SDCFCAST	NPT CASTING
2	1	SF303TMSS	SPOOL
3	2	SF378	CAP SCREW
4	1	P2284B	HANDLE
5	1	SF311	KNOB
6	1	P2260	PIN
7	1	P1767	PIN CLIP
8	1	P2274	DIE CAST 'L' CLEVIS
9	1	SF306	RETAINER
10	1	SF477	ENDCAP
11	1	SF484	SPACER
12	2	SF328A	WASHER
13	1	SF314B	SPRING
14	1	SF374	SPACER
15	2	SF486	ALLEN SCREW
16	1	SF327A	BOLT
17	1	P1870	CARTRIDGE
18	2	PC58	O-RING, 3-910
19	1	SF323	BACK-UP, 8-016
20	1	SF322	O-RING, 2-016
21	1	SF386	RELIEF SEAT
22	3	DC7583	O RING 3-902
23	1	DC7548B	POPPET
24	1	SF391	SPRING
25	1	P1940	SCREW, SET, 5/16-24
26	1	DC7580	PLUG, 5/16-24
27	2	SF304	QUAD RING
28	2	SF305	WIPER
29	2	SF397	PLUG
30	1	SF319	SPRING
31	1	SF317D	PLUG
32	1	SF318B	M. SPOOL
33	1	DC7517A	SHUTTLE SPOOL
34	2	SF510	#2 SAE SHUTTLE STOP
35	2	P1743	CV PLUG
36	1	P1740	NAME TAG
37	1	P1654	WARNING TAG

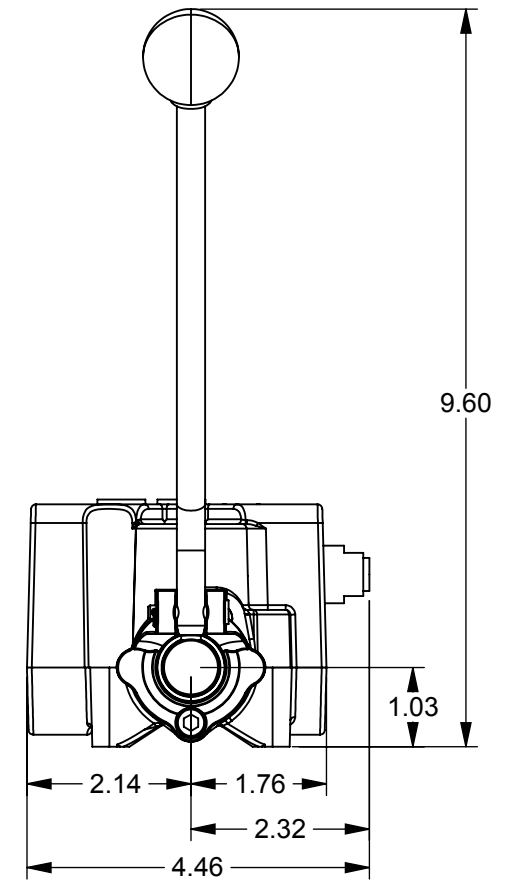
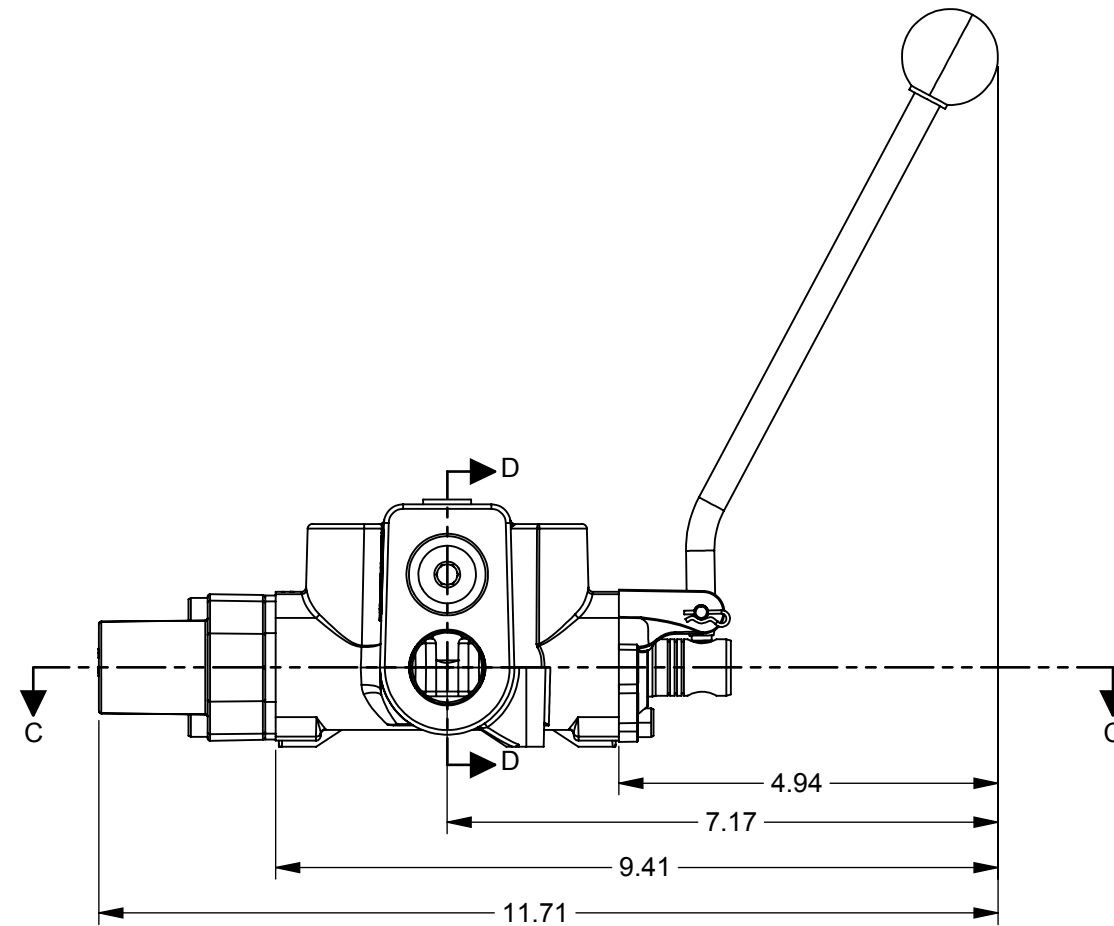
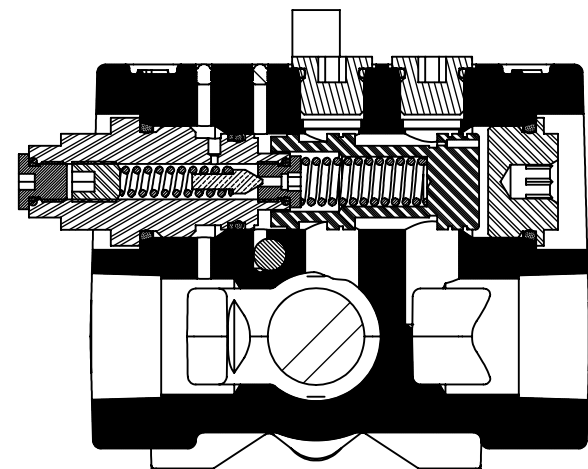
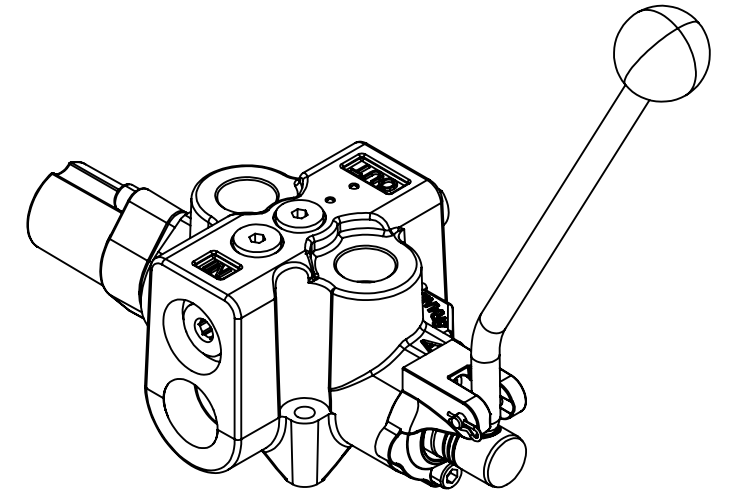
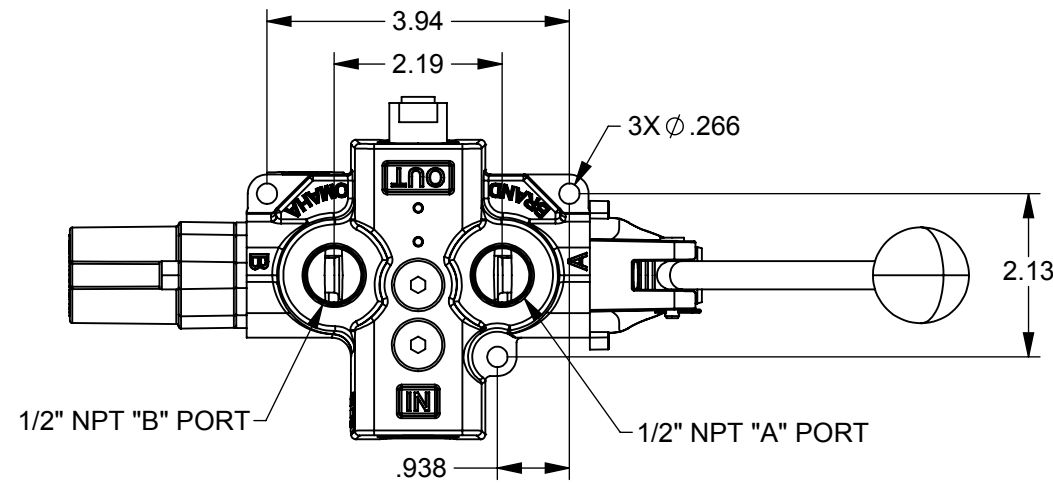
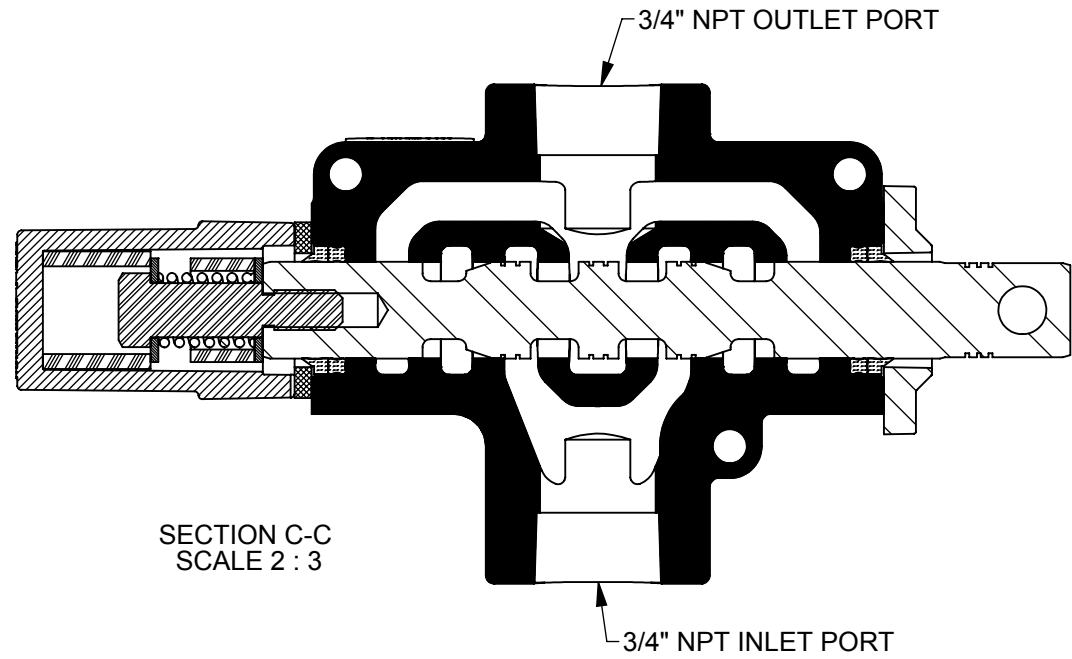
NOTES:
USE 242 (BLUE LOCTITE) ON ITEMS 3 15 16 WHEN ASSEMBLING.

- APPLICABLE KITS:
- (SPOOL ACTION) SDC-S (SEE DRAWING SDC-S FOR PARTS BREAKDOWN)
 - (RELIEF KIT)SDCF-CART (SEE DRAWING SDCF-CART FOR PARTS BREAKDOWN)
 - (HANDLE KIT) SDC-HL (SEE DRAWING SDC-HL FOR PARTS BREAKDOWN)
 - (SEAL KIT) SDCF-K (SEE DRAWING SDCF-K FOR PARTS BREAKDOWN)

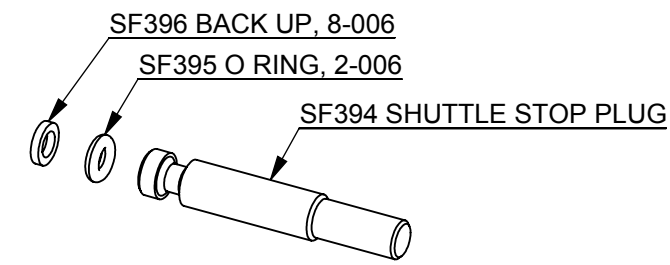
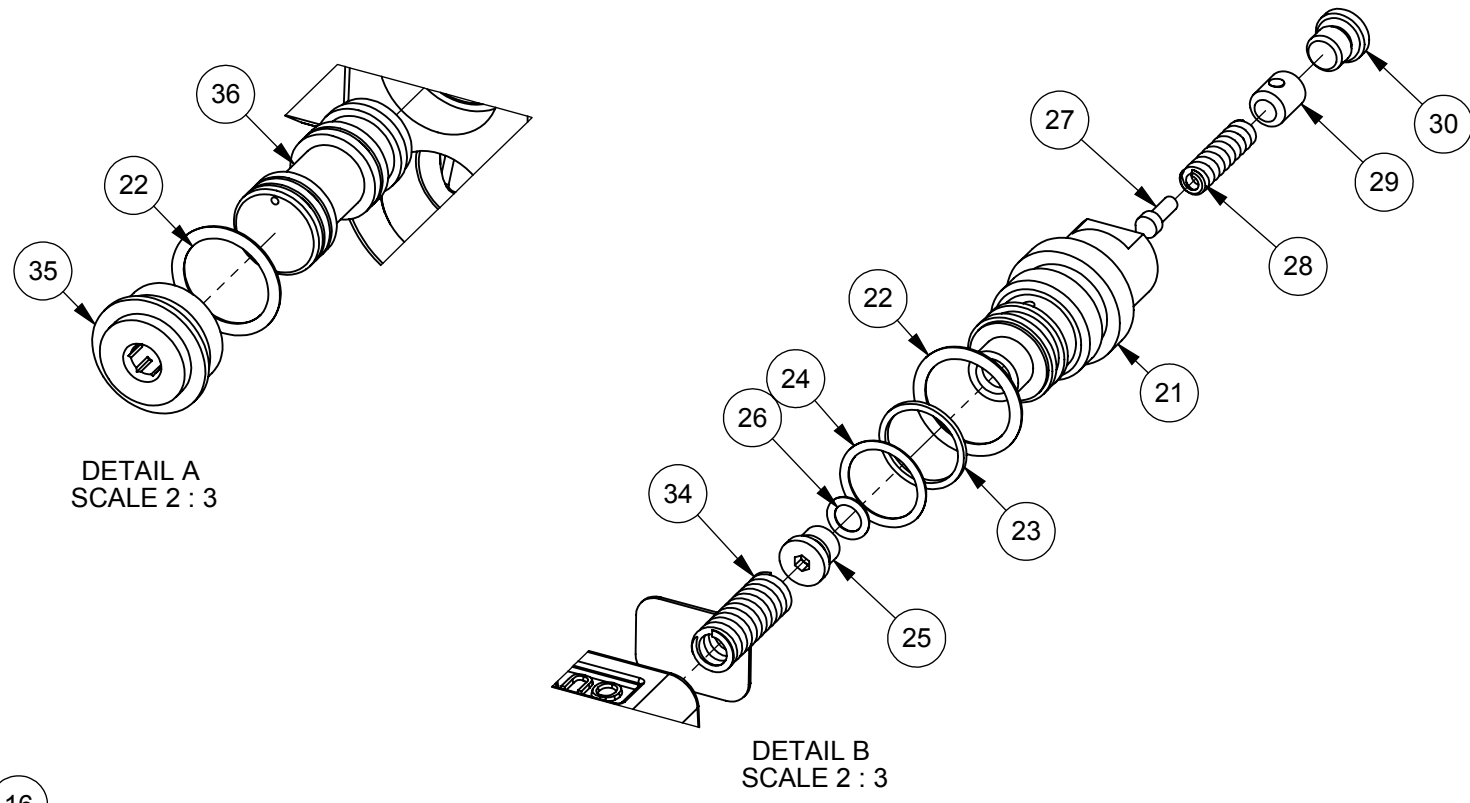
REV.	DATE	DESCRIPTION

BRAND HYDRAULICS CO., INC 2332 SOUTH 25TH STREET, OMAHA NEBRASKA 68105		
TITLE: VALVE, SDCF NPT PORTS, SS 0-12 GPM TANDEM METERING, L HANDLE, SPRING CENTER		MATERIAL:
STANDARD TOLERANCE UNLESS NOTED: 0.00 ± 0.010 (0.015 GC) 0.000 ± 0.005 (0.010 GC) ◎ = .005 TIR FRACTION ± 1/32 ANGLE ± 2° DIMENSIONS ARE IN INCHES	P/N ENDING IN "UF" HAVE NOT RECEIVED FINISH OPERATIONS	DRAWN BY: R. BATT DATE: 08/15/2013
	FINISHING SPECIFICATIONS: HEAT TREAT: -±2RC X - √ GRIND: - PLATE: -	PART NO: SDCF755TM124LSS

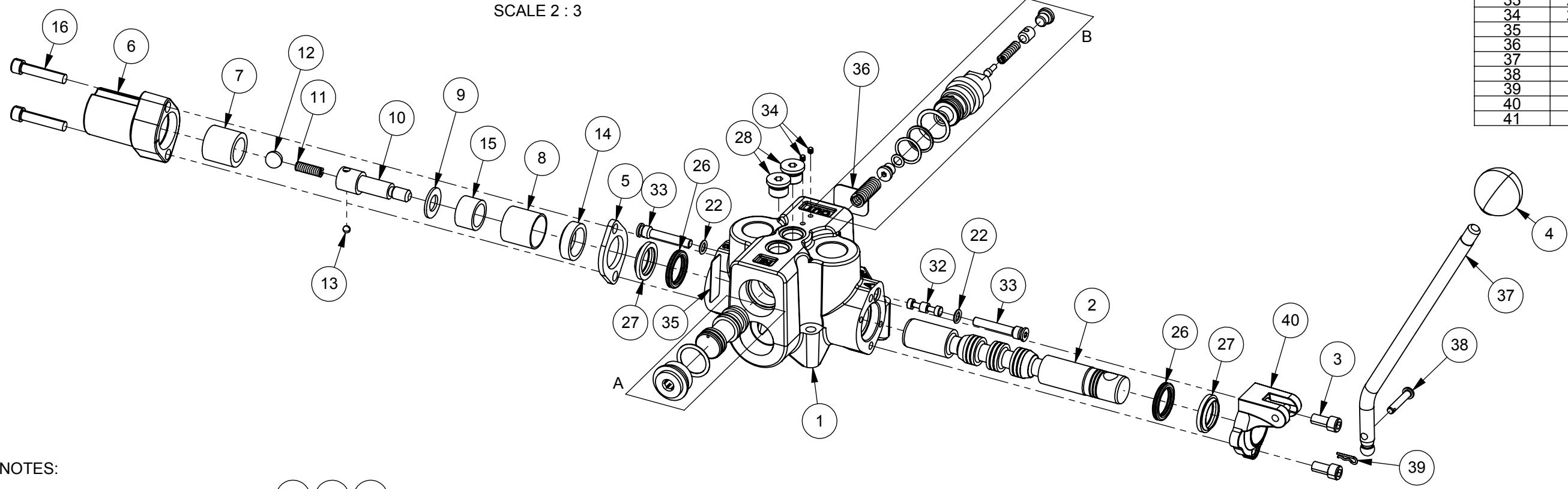




BRAND HYDRAULICS CO., INC 2332 SOUTH 25TH STREET, OMAHA NEBRASKA 68105				
TITLE: VALVE, SDCF NPT PORTS, SS 0-12 GPM TANDEM METERING, L HANDLE, SPRING CENTER			MATERIAL: -	
STANDARD TOLERANCE UNLESS NOTED: 0.00 ± 0.010 (0.015 GC) 0.000 ± 0.005 (0.010 GC) ◎ = .005 TIR FRACTION ± 1/32 ANGLE ± 2° DIMENSIONS ARE IN INCHES	P/N ENDING IN "UF" HAVE NOT RECEIVED FINISH OPERATIONS	DRAWN BY: R. BATT DATE: 08/15/2013	PART NO: SDCF755TM124LSS	
	FINISHING SPECIFICATIONS: HEAT TREAT: -±2RC X - √ GRIND: - PLATE: -	APRV'D BY: APRV'D DATE:	SCALE: 1:2.5	



NOTE: OLD STYLE SHUTTLE STOP (FOR REFERENCE ONLY)



ITEM NO.	QTY.	P.N.	DESCRIPTION
1	1	SDCFCAST	NPT CASTING
2	1	SF303TMSS	SPOOL
3	2	SF378	CAP SCREW
4	1	SF311	KNOB
5	1	SF306	RETAINER
6	1	SF477	ENDCAP
7	1	SF479	FRICION SLEEVE
8	1	SF483	SPACER
9	2	SF328A	WASHER
10	1	SF478	HOUSING
11	1	SF491	SPRING
12	1	B5057	7/16 BALL
13	1	DC7604	3/16 BALL
14	1	SF315	SPACER
15	1	SF374	SPACER
16	2	SF486	ALLEN SCREW
17	1	P1870	CARTRIDGE
18	2	PC58	O-RING, 3-910
19	1	SF323	BACK-UP, 8-016
20	1	SF322	O-RING, 2-016
21	1	SF386	RELIEF SEAT
22	3	DC7583	O RING 3-902
23	1	DC7548B	POPPET
24	1	SF391	SPRING
25	1	DC7580	PLUG, 5/16-24
26	2	SF304	QUAD RING
27	2	SF305	WIPER
28	2	SF397	PLUG
29	1	SF319	SPRING
30	1	SF317D	PLUG
31	1	SF318B	M. SPOOL
32	1	DC7517A	SHUTTLE SPOOL
33	2	SF510	#2 SAE SHUTTLE STOP
34	2	P1743	CV PLUG
35	1	P1740	NAME TAG
36	1	P1654	WARNING TAG
37	1	P2284B	HANDLE
38	1	P2260	PIN
39	1	P1767	PIN CLIP
40	1	P2274	DIE CAST 'L' CLEVIS
41	1	P1940	SCREW, SET, 5/16-24

NOTES:
USE 242 (BLUE LOCTITE) ON ITEMS 3, 16, 10 WHEN ASSEMBLING.

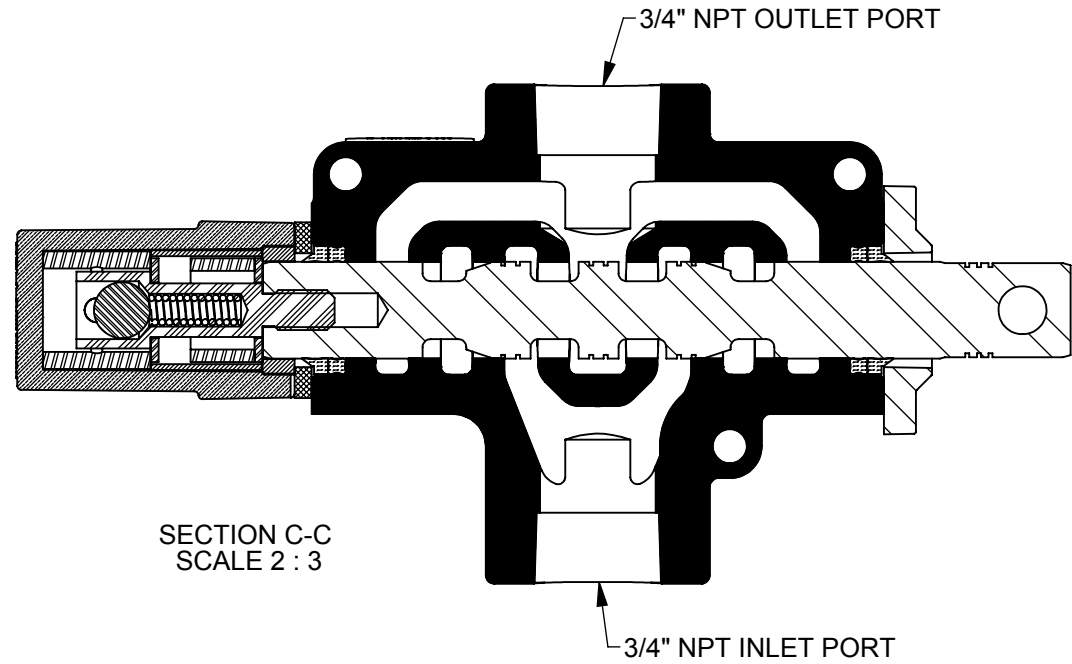
- APPLICABLE KITS:
- (SPOOL ACTION) SDC-F1 (SEE DRAWING SDC-F1 FOR PARTS BREAKDOWN)
 - (RELIEF KIT)SDCF-CART (SEE DRAWING SDCF-CART FOR PARTS BREAKDOWN)
 - (HANDLE KIT) SDC-HL (SEE DRAWING SDC-HL FOR PARTS BREAKDOWN)
 - (SEAL KIT) SDCF-K (SEE DRAWING SDCF-K FOR PARTS BREAKDOWN)

REV.	DATE	DESCRIPTION

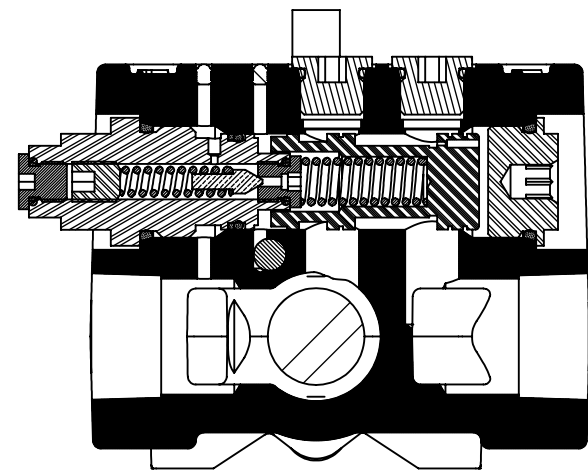
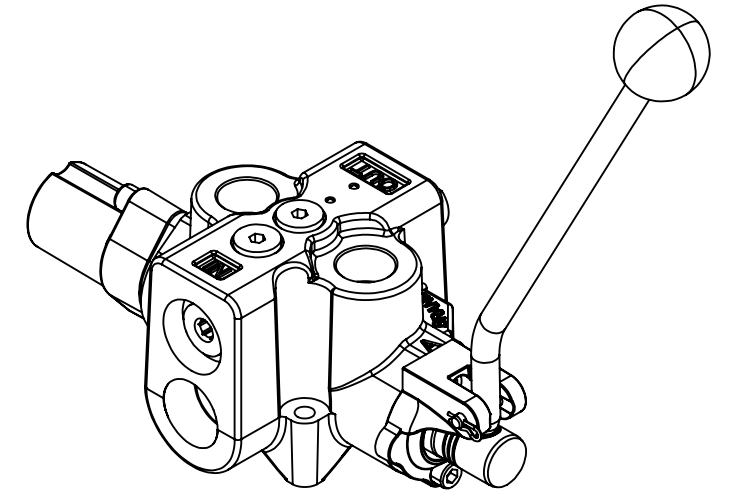
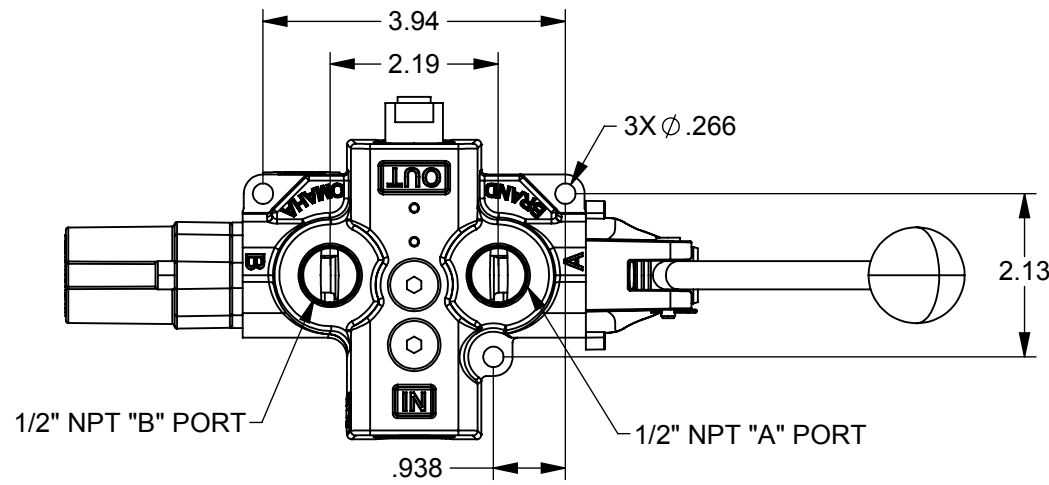
BRAND HYDRAULICS CO., INC
2332 SOUTH 25TH STREET, OMAHA NEBRASKA 68105

TITLE: VALVE, SDCF NPT PORTS, SS 0-12GPM TANDEM METERING, L HANDLE, FRICTION DETENT		MATERIAL: -
STANDARD TOLERANCE UNLESS NOTED: 0.00 ± 0.010 (0.015 GC) 0.000 ± 0.005 (0.010 GC) ◎ = .005 TIR FRACTION ± 1/32 ANGLE ± 2° DIMENSIONS ARE IN INCHES	P/N ENDING IN "UF" HAVE NOT RECEIVED FINISH OPERATIONS	DRAWN BY: R. BATT DATE: 08/15/2013
	FINISHING SPECIFICATIONS: HEAT TREAT: -±2RC X - √ GRIND: - PLATE: -	APRV'D BY: APRV'D DATE: SCALE: 1:3 FORMAT - B

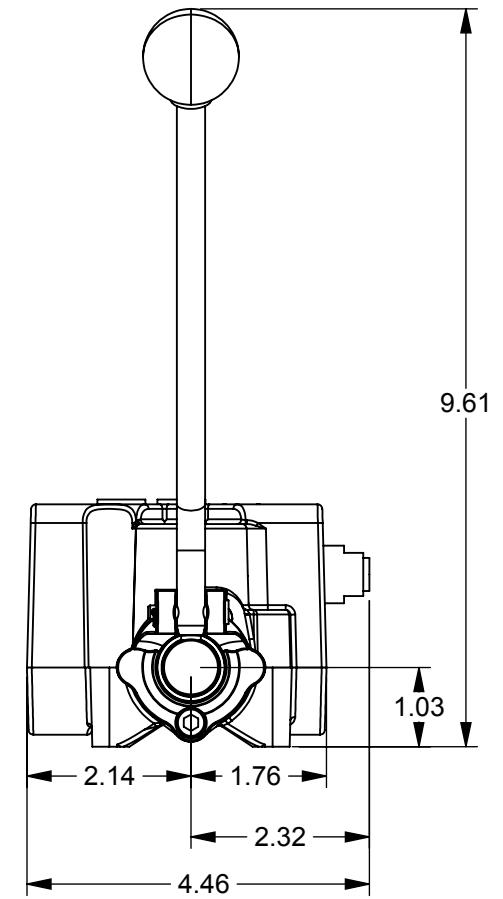
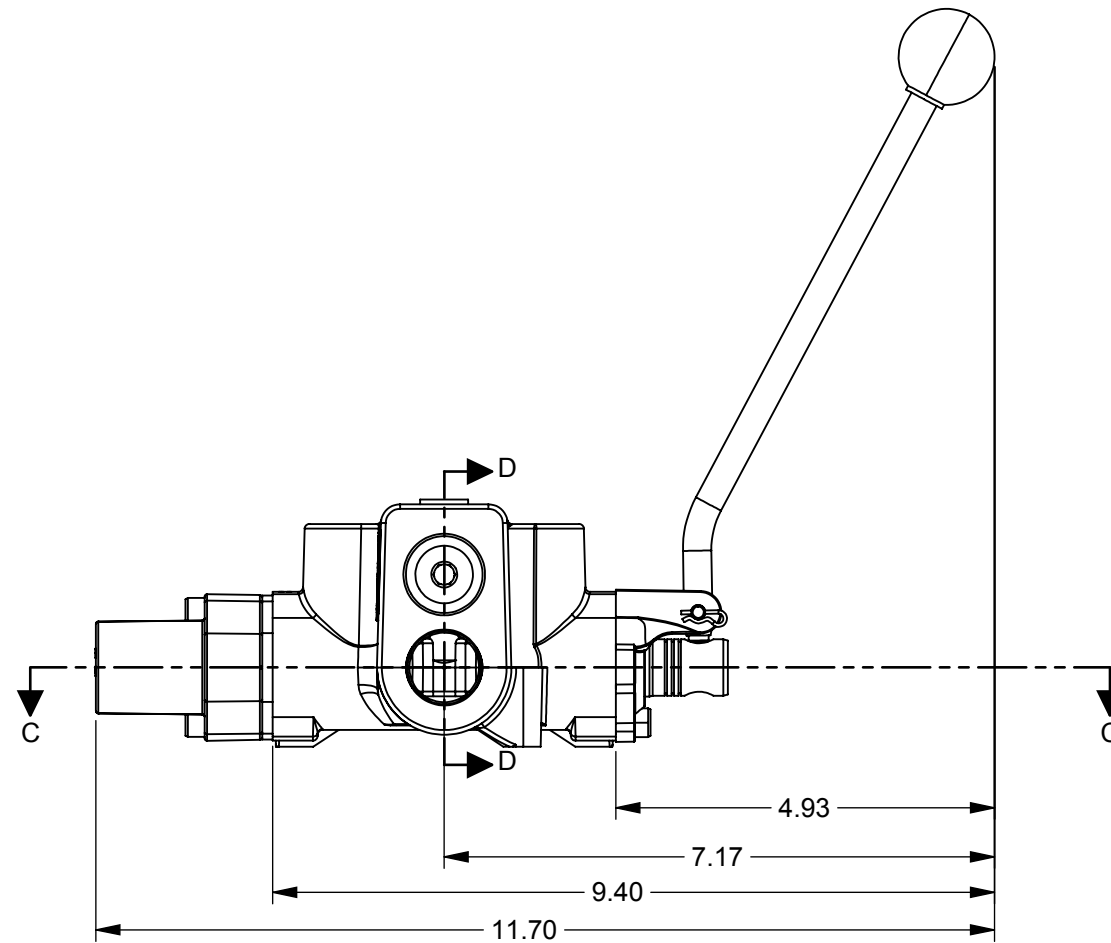




SECTION C-C
SCALE 2 : 3



SECTION D-D
SCALE 2 : 3



BRAND HYDRAULICS CO., INC 2332 SOUTH 25TH STREET, OMAHA NEBRASKA 68105			
TITLE: VALVE, SDCF NPT PORTS, SS 0-12GPM TANDEM METERING, L HANDLE, FRICTION DETENT			MATERIAL: -
STANDARD TOLERANCE UNLESS NOTED: 0.00 ± 0.010 (0.015 GC) 0.000 ± 0.005 (0.010 GC) ◎ = .005 TIR FRACTION ± 1/32 ANGLE ± 2° DIMENSIONS ARE IN INCHES	P/N ENDING IN "UF" HAVE NOT RECEIVED FINISH OPERATIONS FINISHING SPECIFICATIONS: HEAT TREAT: -±2RC X - √ GRIND: - PLATE: -	DRAWN BY: R. BATT DATE: 08/15/2013	PART NO: SDCF755TM12SLF1
		APRV'D BY: APRV'D DATE:	SCALE: 1:2.5