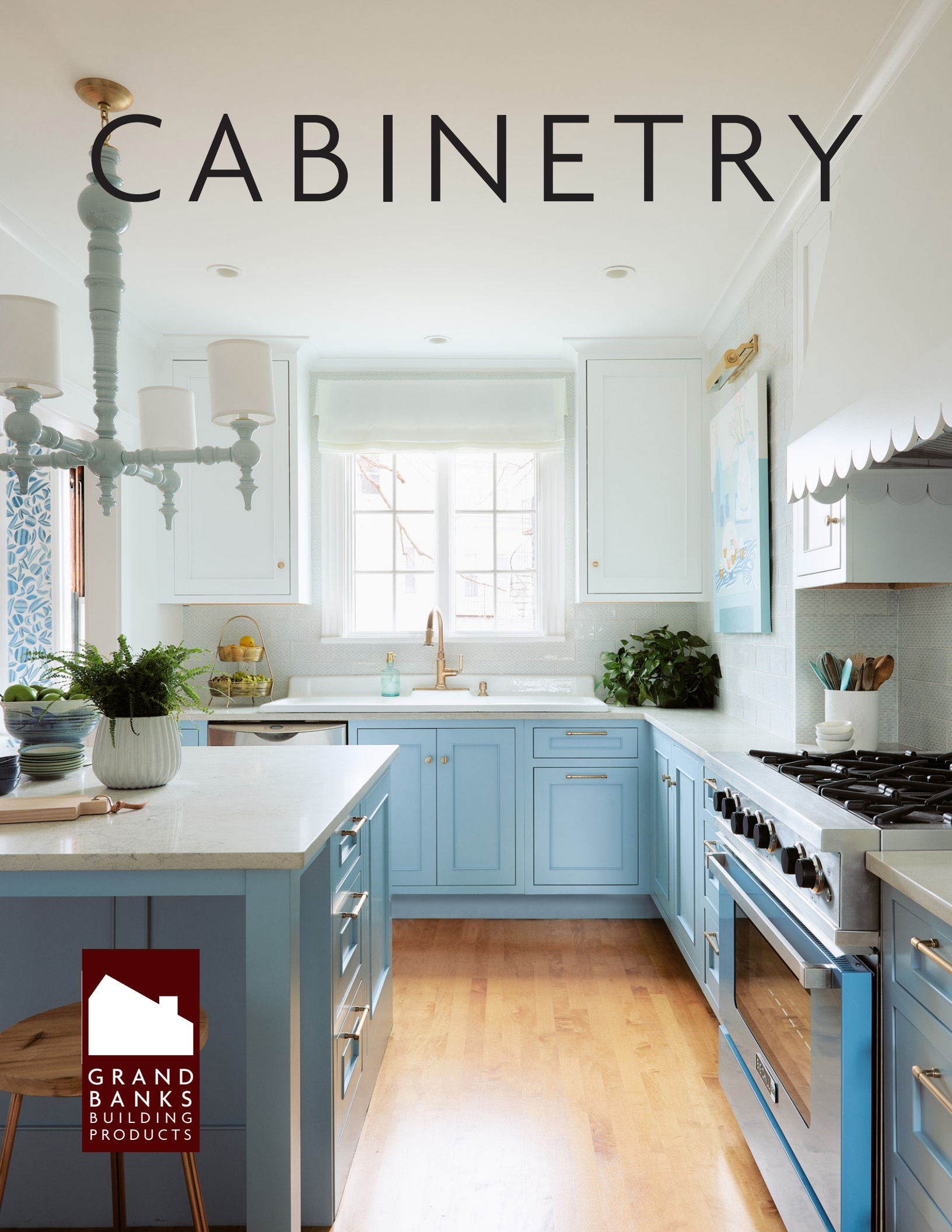


CABINETS



GRAND
BANKS
BUILDING
PRODUCTS



For over 30 years, Grand Banks has been helping homeowners and contractors find the right options to bring their projects to life. Whether you are just beginning to envision your new space or you already have plans sketched, we can help answer all your questions. Good design, communication and quality products are the key to a every successful building project.

Design is a personal process. Our kitchen designers are skilled professionals who will guide you through the design process. From materials, finishes, styles, and budgets, we're here to help you through it all. From your initial design consultation through the finished product we will stand by your side.



OUR PROCESS

FIRST STEPS

During our first meeting, we will get to know you and your goals for your project. Measurements, functionality, style, budget, appliance/sink preferences and timeline will be our primary focus. We will begin the process with both a showroom and a site visit. The site visit will give us a better understanding of your project, and the showroom visit will help us choose the right products for you. In this beginning phase, you'll learn about the cabinet lines we carry, cabinet construction options and give us a sense of your personal style in order to customize your space.

FIND YOUR INSTALLER

Grand Banks does not offer installation services. While we are working on the layout for your space, it is important that you secure an installer for your project. If you don't have an installer, we have a network of recommended builders we can provide. Keep in mind that this is a process. Your installer will be in and around your home for a few months, maybe longer. It's important that you find someone you can work well with.



DESIGN

After your initial meeting, your designer will get to work on laying out your space. Once that's complete, we'll generate a plan, elevations and digital perspectives to present to you. This will include the first quote for your cabinetry, countertops and cabinet hardware.

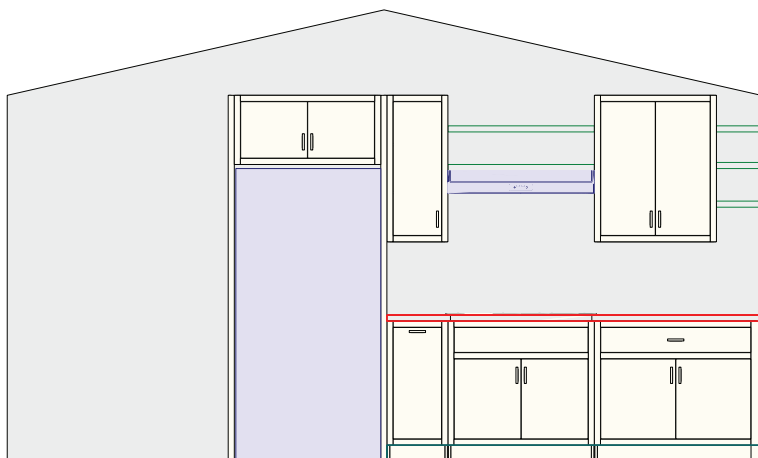
Sometimes we get the design right on the first layout and other times it takes a few rounds of revisions to get it right. Design is a collaborative process and we want to ensure you are completely comfortable with the design and layout prior to placing your order.

ORDER

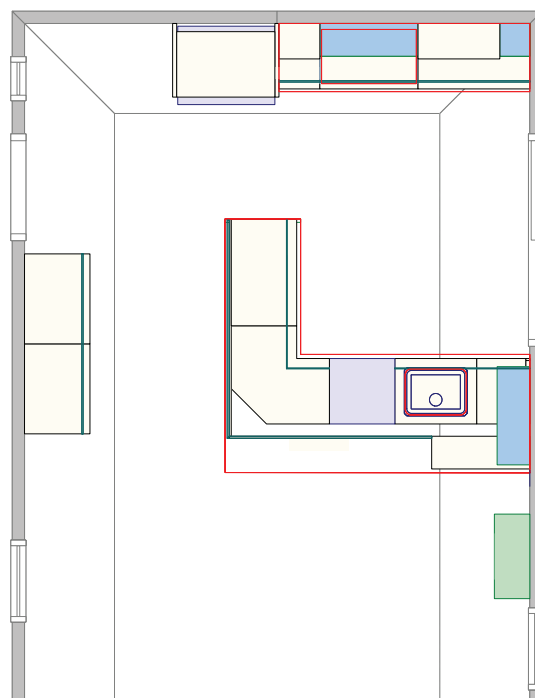
After the plans are finalized, we'll place your order, and the manufacturer will begin production on your cabinetry. Lead times vary depending on the products. Once we have an estimated arrival date we'll share it with you to begin planning for installation.

While your products are being built, your independent installer will prep your space for cabinetry. For some projects this phase can take months to complete and will involve structural, plumbing and electrical changes. For simpler projects this could be completed in the days before the cabinets arrive.

ELEVATION



PLAN



PERSPECTIVE



DELIVERY + INSTALLATION

Grand Banks will deliver your products to your site. Your team of installers will need to bring the cabinetry into your home.

Following our detailed drawings, your installer takes over at this point making sure the pieces are put together properly bringing the project to life. We are here to ensure that this phase goes smoothly and are available on site if necessary. Countertops and hardware are typically the finishing touches which have been decided in collaboration with your designer in the design phase.



Above: Cubitac Basic
Right: Medallion Vanity Cabinet - Bath Silhouettes Line





Plain & Facy Custom, Tall Pantry Pullout

CABINETS

Throughout the meeting and design phase, we will discuss cabinetry basics including cabinet lines we carry, cabinet construction options, sink and appliance preferences and styles. We understand that there are a lot of decisions to make and this list just touches on a few. We will do our best to guide you through the decision making process and help ease this process.

Our partners allow us to offer the best solution for your space and needs. Stock cabinetry is our lowest priced option with the quickest turnaround time, yet fewest options. Semi-custom cabinetry offers ample door styles, finishes and cabinet construction types making it a popular choice amongst our clients. Custom cabinetry offers superior craftsmanship designed for your space. These cabinets are hand crafted and built to your specific design needs.

Stock Cabinetry

- Standard Sizing
- Limited Finishes + Door Styles
- \$

Semi Custom Cabinetry

- Modifications Available
- Many Finishes + Door Styles
- Made in the U.S.A.
- \$ - \$\$\$

Custom Cabinetry

- Custom Dimensions + Configurations Available
- The Most Finishes + Door Styles
- Made in the U.S.A.
- Handcrafted
- \$\$\$ - \$\$\$\$\$



ACCESSORIES

To make the most of your space and cabinetry, your designer will help guide you through the many accessory options that our cabinetry lines have to offer. Some of these include trash pullouts, spice racks, roll out drawers, tray dividers and appliance garages. We also have several options to make the best use of your corner cabinetry such as lemans pullovers, full access trays and lazy susans.





ROLLOUT DRAWERS



APPLIANCE GARAGE



TALL PANTRY W/ROLLOUTS



DOUBLE TRASH PULLOUT

CABINET CONSTRUCTION

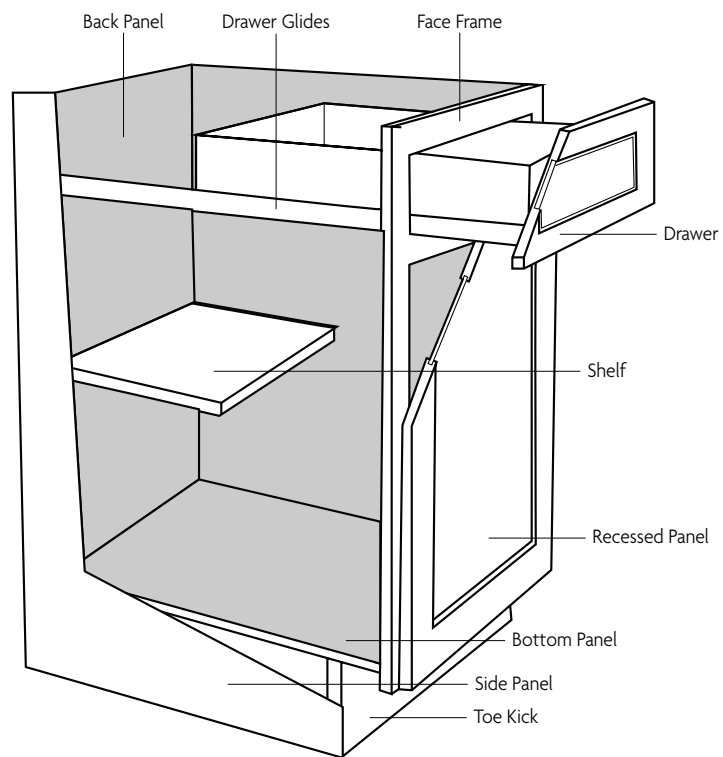
When discussing cabinet construction options with our clients there are three main components to consider:

- Cabinet Box Construction
- Framed vs. Frameless Cabinetry
- Cabinet Door + Drawer Front Materials

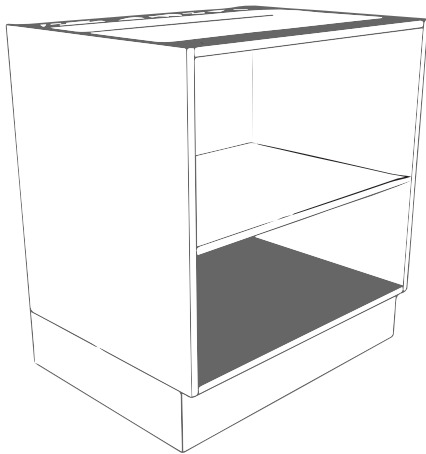
CABINET BOX CONSTRUCTION

The majority of our clients choose a plywood box construction for their cabinetry. Plywood is an extremely stable man made material that is composed of wood veneers and engineered components that are layered strategically making it ideal for strength and durability. A furniture or particle board box construction is a more economical choice. Furniture or particle board is a type of wood that is engineered from wood chips and resins. Our designers can help you decide which is right for you.

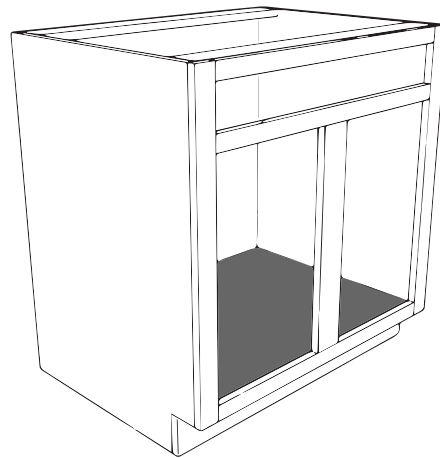
FRAMED CABINET BOX



FRAMED VS. FRAMELESS



Frameless cabinets do not have a face frame. The doors and drawers of your cabinets sit directly on top of the cabinet box resulting in sleeker reveals between door and drawer faces. Frameless Cabinets, or commonly referred to as Full Access or European Cabinetry allows for more internal storage capacity because you don't have the obstruction of the face frame mounted to the front of the cabinet.



Framed cabinets have a 1 ½" wide x ¾" thick solid wood face frame that is mounted to the front of the cabinet box. Framed cabinetry comes with a choice of overlay or inset. An overlay cabinet features doors and drawers that lay over the face frame, and projects the thickness of the doors. The doors and drawers of an inset cabinet sit flush within the face frame of the cabinet making the 1 ½" face frame visible. When choosing inset you can choose between flush inset and beaded inset.

FRAMELESS



FRAMED OVERLAY



Medallion Gold Line

FRAMED INSET



Shiloh Semi Custom

CABINET DOOR + DRAWER FRONT MATERIALS

Different materials are used depending on the wood species ordered and the desired finish. Generally speaking there are three main components; solid wood, MDF (Medium Density Fiberboard) and wood veneers.

Wood expands and contracts with changes in humidity levels. A mortise and tenon joint, commonly used for cabinet doors and drawer fronts, is designed to allow wood to move. However, a painted finish does not move, and will likely split when applied to wood cabinetry. Because of this manufacturers commonly recommend the use of MDF for a painted cabinet. MDF is less susceptible to expansion and contraction, ideally preserving a painted finish better than solid wood. Some of the manufacturers offer an all MDF door and drawer front when choosing a painted finish. MDF is less expensive than solid wood, therefore an economical choice as well. Most door and drawer fronts feature a hardwood frame that makes up the stile and rails for the door or drawer with an MDF center panel.

If ordering a wood stained cabinet, one way to keep cost down is to choose a solid wood frame with a wood veneer center panel. The stile and rails of the door and drawer would be made of the wood species of choice and the center panel would be an MDF panel covered with a wood veneer of the same species stained to match. For someone who values a solid wood cabinetry, we can choose doors and drawer faces made from all solid wood, which is typically the most expensive option.



Shiloh Semi Custom Flush Inset

APPLIANCES + SINKS

Appliance and sink preferences are an important part of designing your kitchen. Your cabinets are designed to host your appliances and sink of choice, therefore the design cannot be finalized before these are chosen. Our goal is to ensure your cabinets, appliances and sink are all integrated into your space perfectly.



Plain & Fancy Custom Integrated Fridge Panel

APPLIANCES

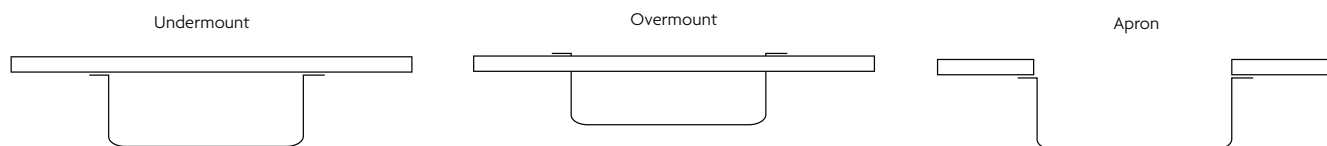
Early in our design process we discuss appliances to determine what needs to be integrated into the layout. Appliances range drastically in regards to space requirements and the way they need to interact with the cabinetry that surrounds them.

Some appliances are designed to receive a panel to integrate into your cabinetry. Wood range hoods are available through your chosen cabinet company. Others prefer a chimney style or under cabinet hood. “Standard” is a thing of the past for appliances therefore it is important to connect with an independent appliance provider you trust.

SINKS

Another topic of decision early on is your sink choice. There are three main types of sinks, overmount or drop in sink, undermount, and farmhouse or apron front sink.

An overmount sink sits on top of your countertop. An undermount sink is mounted to the underside of your countertop. A farmhouse, or apron front sink fits into the countertop with the front side of the sink exposed. It can sit under, flush or on top of your counter. The cabinet that is ordered to host your sink changes depending on the type of sink you choose. Because of this it is important to determine this early on in the design process as well. Talk to your designer about the best option for your space.



HARDWARE

When deciding on your hardware, it's mostly about personal preference and budget. Hardware is typically one of the last choices you make after the kitchen is designed and ordered. Here are a few things to consider when making your choice.

FINISH & MATERIAL

You can choose from a variety of materials and styles. Some common finishes are shown here, however there are certainly more depending on the style and brand you choose.



Design-Craft

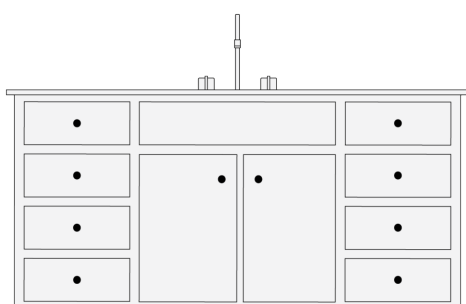


Design-Craft

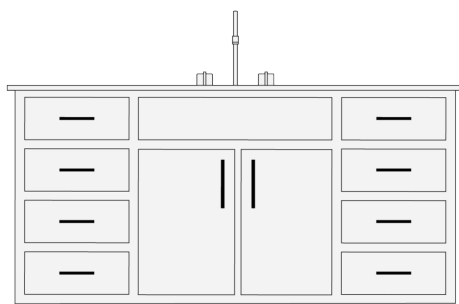
KNOB OR HANDLE

Knobs are typically found on cabinet doors, while handles or pulls are more often found on drawers. Below are some examples and guidelines, however, there are no rules. Do what feels right for you and your space.

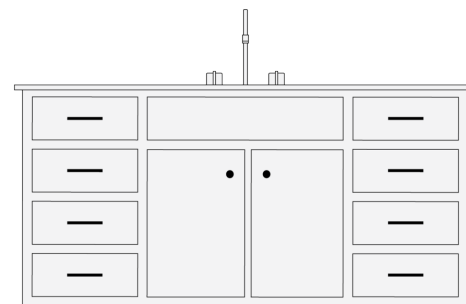
You can browse inspiration galleries online, visit our showroom or rely on your designer to help you make this choice.



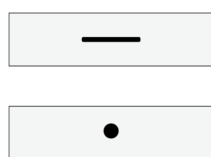
KNOBS



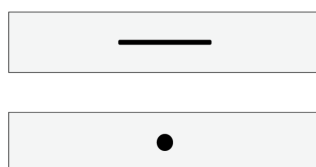
HANDLES



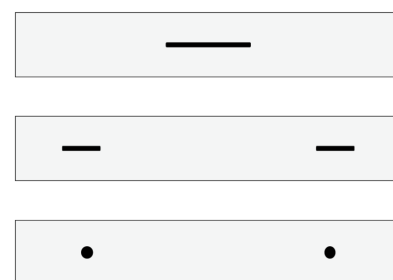
KNOBS +
HANDLES



Small Drawers that are 12" or less often work best with a pull that is 3" to 4" long or a knob that is 1" in diameter.



Medium Drawers that are between 12" to 24" work well with a pull that is between 4" to 8" long or a knob that is between 1" to 1.5" in diameter



Large Drawers that are 24" to 48" will work well with a pull that is longer than 8" or a knob that is 1" in diameter or greater. Using two pulls or knobs for a large drawer can be a great option.

COUNTERTOPS

Choosing the right material for your countertops can help increase the value of your home, extend the life of your space and anchor the style for other pieces in the room. Maintenance requirements, price and color options are just a few of the variables you have to choose from.

Another consideration is patina. Patina is the changing nature of your counters over time as they accumulate scratches, etches and nicks. This can add a lot of character to a piece; some people like that idea and others do not. For this reason personal preference will play an important role in your choice of material. Knowing what the options are and what different materials have to offer can help you make the right decision for your space.

GRANITE



Pros

- Heat & scratch resistant
- Non-porous when properly sealed
- Unique slabs
- Wide variety of colors & patterns
- Natural material

Cons

- Some maintenance required
- Patterns can be inconsistent from slab to slab

SOAPSTONE



Pros

- Non-porous stone means no staining or bacterial growth
- Minimal no maintenance
- Softer feel than other solid stone surfaces
- Natural material

Cons

- Available only in varying shades of gray
- Quarried in smaller slabs, which could result in more seams in your counters
- Easily scratched and nicked

MARBLE



Pros

- Natural material in light shades
- Each piece is unique
- Available in a range of colors and veining
- Heat resistant

Cons

- Porous material susceptible to staining
- Easily scratches & etches
- Requires ongoing maintenance

BUTCHER BLOCK

**Pros**

- Soft material that's easy on glassware and dishes
- A durable choice when properly maintained
- Repairable: Nicks and burns can be lightly sanded & refinished
- Wood has natural antibacterial properties

Cons

- Not heat or stain resistant
- Wood can swell and shrink depending on humidity, which may lead to cracking
- Excessive wetness may cause rot & discoloration
- Some maintenance is required

QUARTZ

**Pros**

- Available in many colors and patterns
- Stain, scratch, and acid-abrasion resistant
- No maintenance
- Resistant to bacteria growth, nonporous

Cons

- Lacks natural variations in patterning and veining
- Visible seams
- Only heat resistant up to 150°

CORIAN

**Pros**

- No maintenance
- Non-porous, won't harbor bacteria
- Wide variety of colors and patterns
- Integrated sink bowls available

Cons

- Not heat resistant
- Can scratch and chip easily
- Subject to staining
- Pricing is subject to style and manufacturer

LAMINATE

**Pros**

- Affordable
- Easy to clean
- Non-porous
- Wide variety of colors and patterns

Cons

- Not durable
- Can scratch or crack easily
- Not heat resistant



Medallion Platinum Pantry - Flush Inset



Shiloh Semi-Custom Cabinetry- Beaded Inset

After reading this you are most likely getting a sense of the amount of decisions you are faced with when choosing cabinets for your home. Our Design Team is skilled in leading you through these decisions, educating you along the way and assisting you in making the best decisions for your unique space.

KITCHEN INVENTORY

When planning your kitchen, it is often helpful to take into account what you have. Make sure you create space for all of your dishes, utensils, appliances, ingredients and other items, so you can design and set up your kitchen exactly how you like it. All kitchens are different. Below is a general kitchen inventory you can use as a basic guideline to start with.

Appliances	Cooking	Food	Storage
Dishwasher Stove Hood Refrigerator Food Processor Mixer Kettle Coffee Maker Toaster Microwave Blender Beverage Fridge	Silverware Cooking Utensils Pots + Pans Sheet Trays Mixing Bowls Measuring Cups Dishes Cups + Mugs Serving Dishes Knives Cutting Boards Drying Racks Paper Towels Oven Mitts Dish Towels	Flour, Sugar + Spices Oil + Vinegar Cereal + Grains Canned Goods Fruit Snacks	Tupperware Aluminum Foil Plastic Wrap Plastic Bags

NOTES



Gloucester | Waltham
978-281-2421
grandbanksbp.com
team@grandbanksbp.com