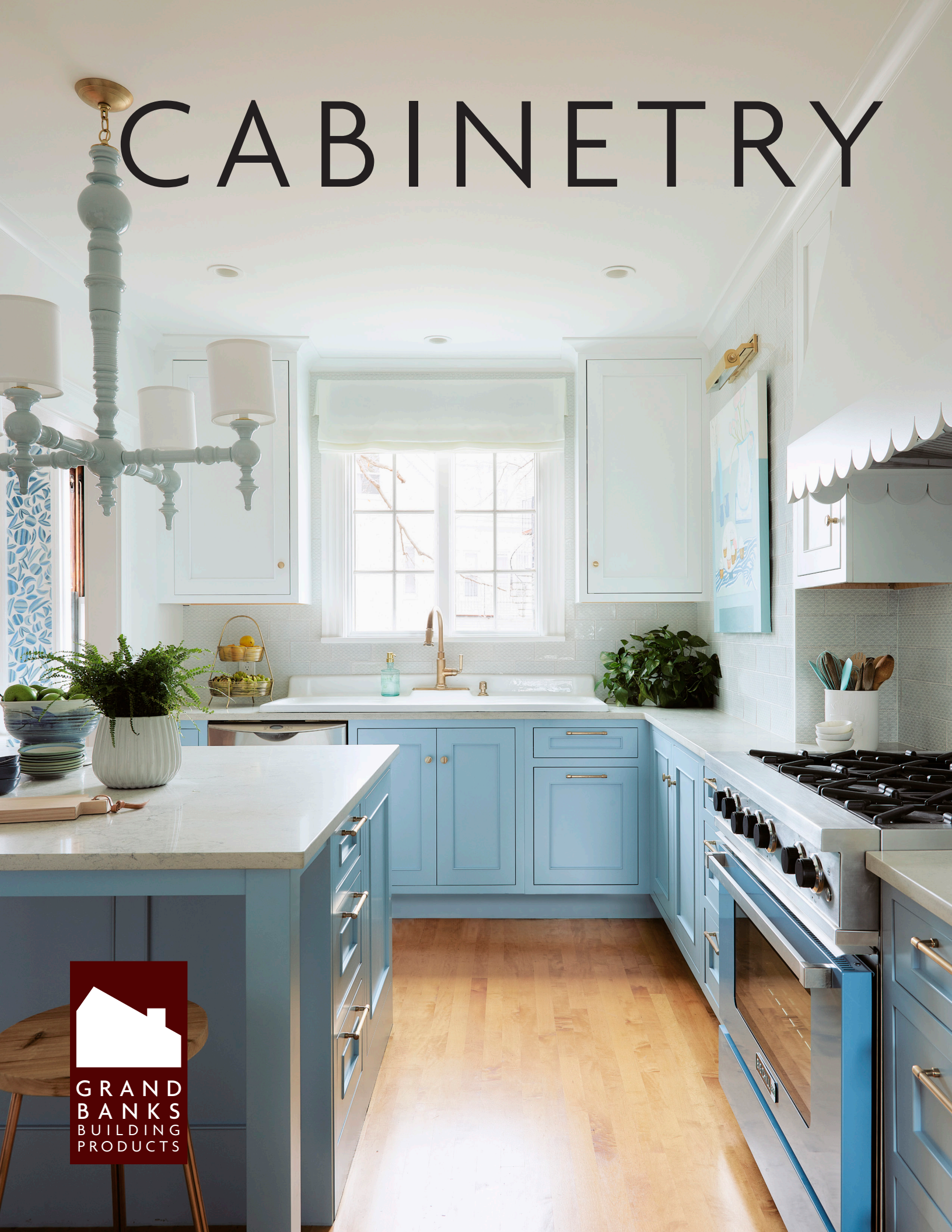


# CABINETS



GRAND  
BANKS  
BUILDING  
PRODUCTS





# CABINETS

---

For over 30 years, Grand Banks has been helping homeowners and trade professionals find the right options to bring their projects to life. Whether you are just beginning to envision your new space or you already have plans sketched, we can help. Good design, communication and quality products are key to a successful project.

Design is a personal process. Our kitchen designers are skilled professionals who will guide you through the whole project. From your initial design consultation through the finished product we will stand by your side.

Our Process.....	2
Cabinets.....	9
Box Construction.....	10
Appliances.....	12
Hoods.....	13
Sinks.....	13
Accessories.....	14
Countertops.....	16
Hardware.....	18
Kitchen Inventory.....	22

# OUR PROCESS

## FIRST STEPS

During our first meeting, we will get to know you and discuss the goals for your project. Measurements, functionality, style, budget, appliance/sink preferences and timeline will be our primary focus. We will begin the process with either a showroom meeting or a site visit. The site visit will give us a better understanding of your space, and the showroom visit will help us choose the right products for you. In this beginning phase, you'll learn about the cabinet lines we carry, cabinet construction options and give us a sense of your personal style in order to customize your space.

## FIND YOUR INSTALLER

While we are working on the layout for your space, it is important that you secure an installer for your project. Grand Banks does not offer installation services, but we have a network of recommended builders we can provide. Keep in mind your installer will be in and around your home for a few months, maybe longer. It's important that you find someone you can work well with.





## DESIGN

After your initial meetings, your designer will get to work on laying out your space. Once complete, we'll generate a plan, elevations and digital perspectives to present to you (as seen below and to the right). This will include the first quote for your cabinetry, countertops and cabinet hardware.

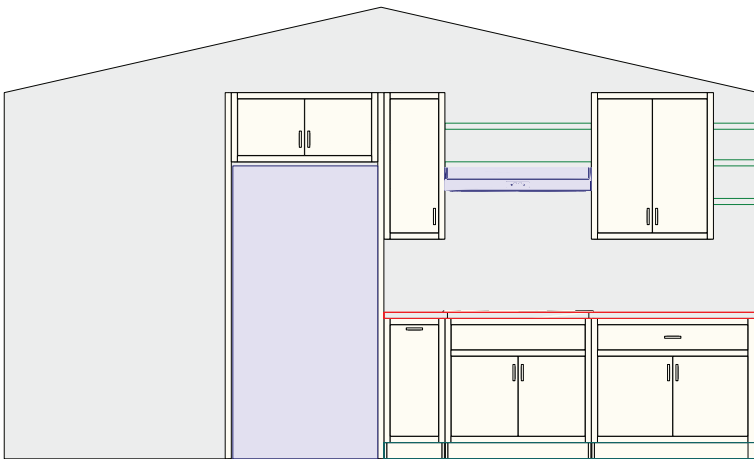
Sometimes it takes a few rounds of revisions to get it just right. Design is a collaborative process and we want to ensure you are completely comfortable with the design and functionality prior to placing your order.

## ORDER

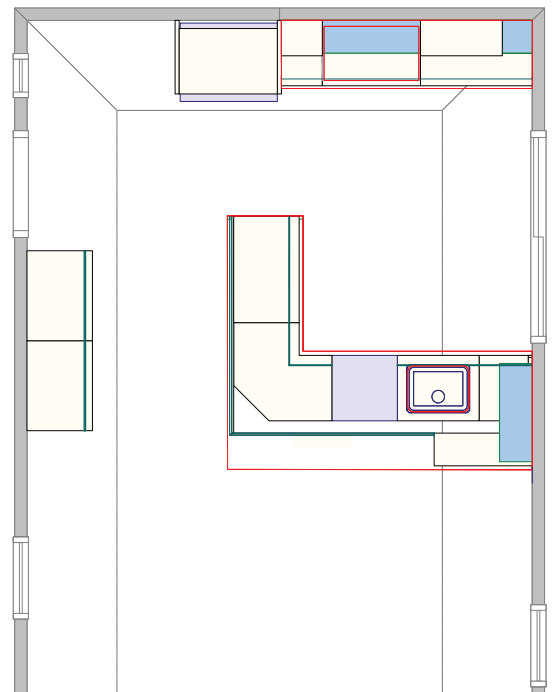
After the plans are finalized, we'll place your order, and the manufacturer will begin production of your cabinetry. Lead times vary depending on the products. Once we have an estimated arrival date we'll share it with you to begin planning for installation.

While your products are being built, your independent installer will prep your space for cabinetry. For some projects this phase can take months to complete and will involve structural, plumbing and electrical changes. For simpler projects this could all be completed in the days before the cabinets arrive.

ELEVATION



PLAN





**PERSPECTIVE****DELIVERY + INSTALLATION**

Grand Banks offers tailgate delivery and will deliver your products right to you. Your team of installers will need to bring the cabinetry into your home.

Following our detailed drawings, your installer takes over at this point making sure the pieces are put together properly bringing the project to life. We are here to ensure that this phase goes smoothly and are available on site if necessary.



Medallion Cabinetry, Bath Silhouettes Line



# CABINETY LINES

Throughout the meeting and design phase, we will discuss cabinetry basics introducing you to the lines we carry. Our partners allow us to offer the best solution for your space and needs. All of our cabinets come with plywood box construction, some also offer particle board. Stock cabinetry is our lowest priced option with the quickest turnaround time, yet fewest options. Semi-custom cabinetry offers ample door styles, finishes and accessories making it a popular choice. Custom cabinetry offers the highest level of craftsmanship with the most customizations. These cabinets are hand crafted and feature a superior finish.

## Stock Cabinetry

- Standard Sizing
- Limited Finishes + Door Styles
- \$

## Semi Custom Cabinetry

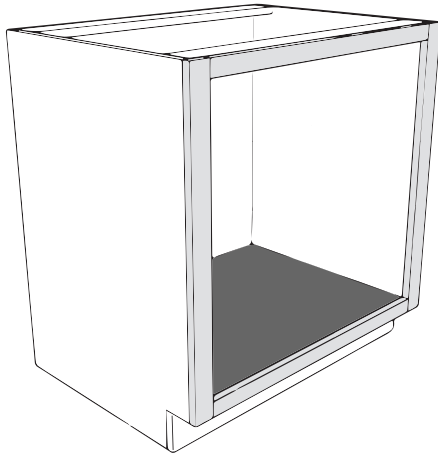
- Modifications Available
- Many Finishes + Door Styles
- Made in the USA
- \$ - \$\$\$

## Custom Cabinetry

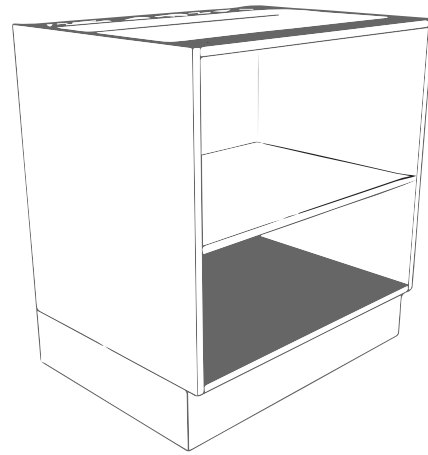
- Custom Dimensions + Configurations Available
- The Most Finishes + Door Styles
- Made in the USA
- Hand crafted
- \$\$\$ - \$\$\$\$\$



# BOX CONSTRUCTION



**Framed** cabinets have a 1 1/2" wide solid wood face frame that is mounted to the front of the cabinet box. Framed cabinetry comes with a choice of overlay or inset construction. An overlay cabinet features door and drawer fronts that sit on the face frame. The door and drawer fronts of an inset cabinet sit inside the face frame of the cabinet making the full face frame visible.



**Frameless** cabinets do not have a face frame. The doors and drawers of your cabinets sit directly on top of the cabinet box resulting in sleeker reveals between door and drawer fronts. Frameless cabinets, are sometimes called Full Access or European Cabinetry. This allows for more internal storage because you don't have the obstruction of the face frame mounted to the front of the cabinet.

## FRAMELESS



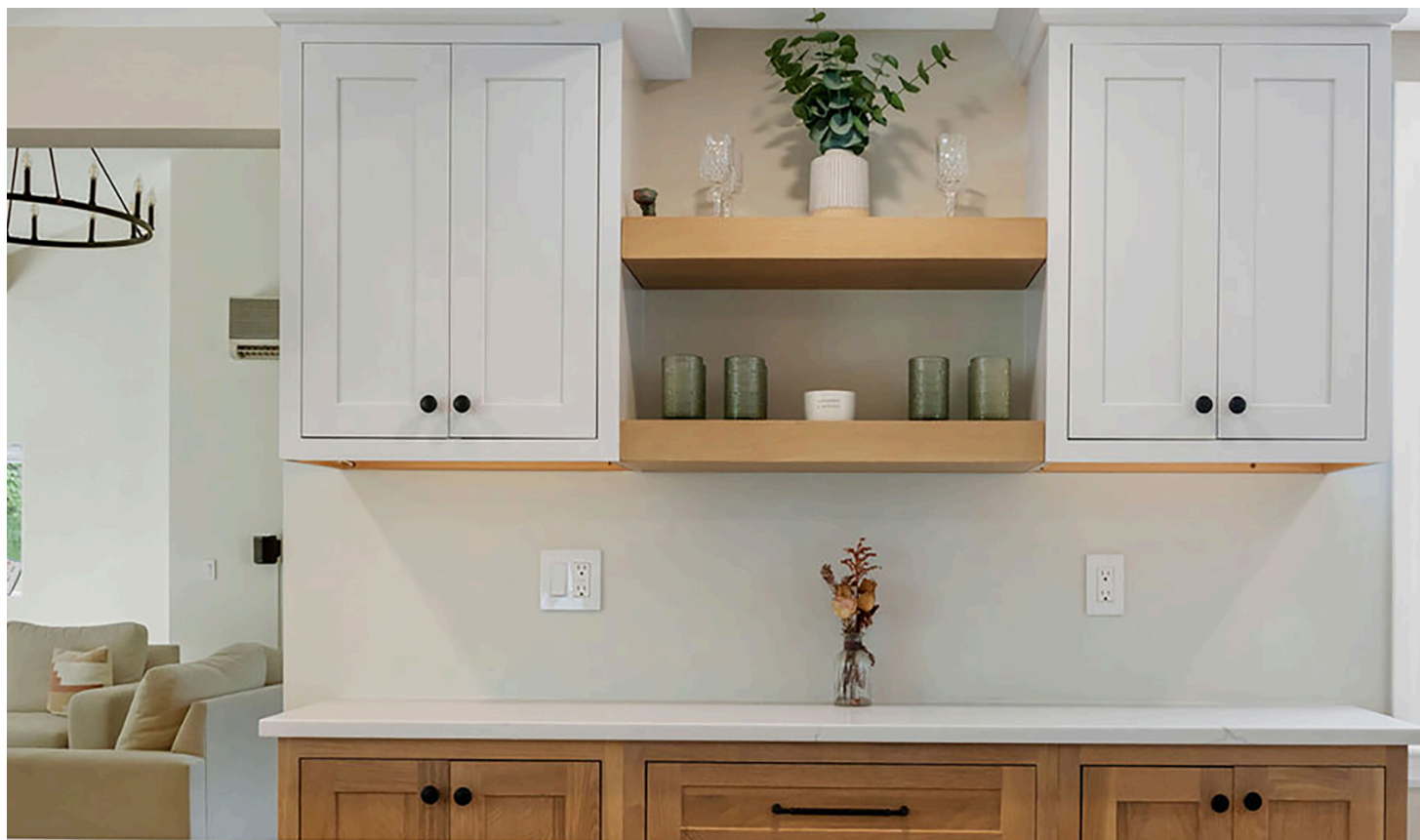


FRAMED OVERLAY



Medallion Cabinetry, Gold Line

FRAMED INSET



Shiloh Cabinetry

# APPLIANCES

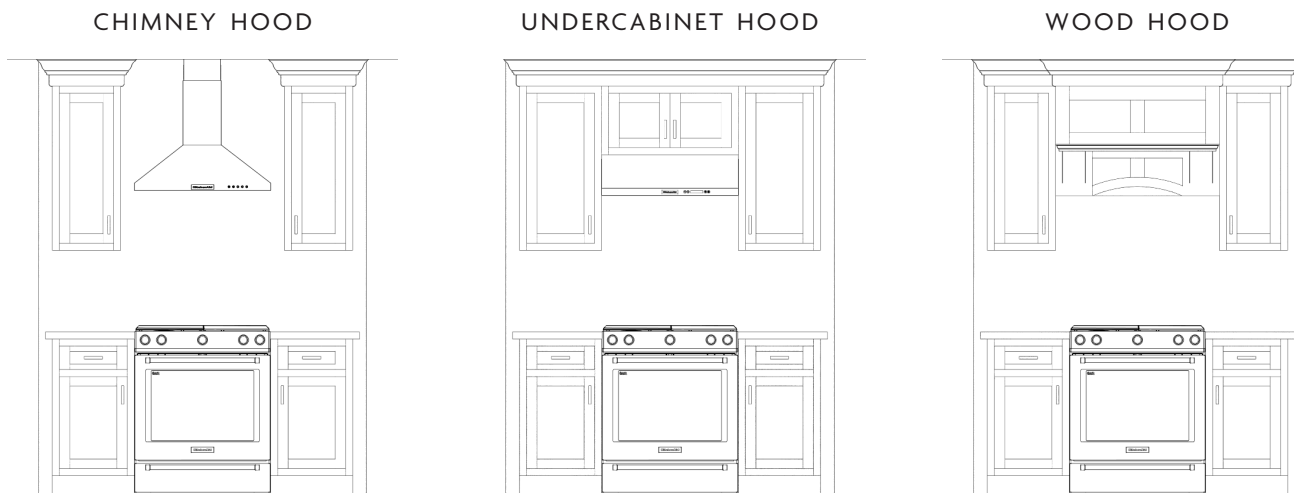
Your appliances play a crucial role in the layout of your cabinetry. Early on in the design process, it's important for us to know which appliances you'll be using. Your designer will use the specifications provided to make sure they seamlessly integrate into your space. Model numbers are required to finalize your order.





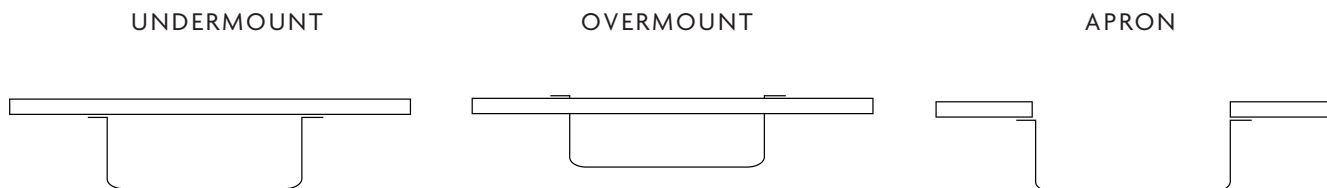
# HOODS

A good ventilation system is an important part of every kitchen. Like appliances and sinks, we need to know the exact specifications of your hood when designing your space. There are three main types of hood to consider; a chimney style hood, an under cabinet hood or a wood hood which can be provided by your cabinetry manufacturer.



# SINKS

The cabinet for your sink changes depending on the type of sink you choose. Because of this it is important to determine this early on in the design process as well. Talk to your designer about the best option for your space. An overmount sink sits on top of your countertop. An undermount sink is mounted to the underside of your countertop. A farmhouse, or apron front sink fits into the countertop with the front side of the sink exposed. It can sit under, flush or on top of your counter.



# ACCESSORIES

As we design, we'll talk a lot about the functionality of your space and how to make it work best for you. Cabinet accessories are one of the best ways to make the most of your space. Our cabinetry lines offer an abundance of creative storage solutions. We will help guide you through the many selections to tailor your cabinetry to your needs.







SUPER SUSAN



APPLIANCE GARAGE



TALL PANTRY W/ROLLOUTS



DOUBLE TRASH PULLOUT



# COUNTERTOPS

Grand Banks has long-standing relationships with local countertop fabricators allowing us to offer a variety of quality options. Together, we'll go over the advantages and disadvantages of certain surfaces and help steer you in the right direction. Maintenance requirements, price, and color options are just a few of the variables. After you choose your material, and once your cabinetry is installed, the fabricator will come to your project and create a template. After fabrication time, they will deliver and install your counters.

## GRANITE



### Pros

- Non-porous when properly sealed
- Unique slabs
- Heat & scratch resistant
- Wide variety of colors & patterns
- Natural material

### Cons

- Maintenance required
- Patterns can be inconsistent from slab to slab

## SOAPSTONE



### Pros

- Non-porous stone
- Unique slabs
- Minimal maintenance
- Softer feel than other surfaces
- Heat resistant
- Natural material

### Cons

- Available only in varying shades of gray
- Quarried in smaller slabs, which could result in more seams in your counters
- Easily scratched and nicked

## MARBLE + QUARTZITE



### Pros

- Available in light shades
- Unique slabs
- Available in a range of colors and veining
- Heat resistant
- Natural material

### Cons

- Porous material susceptible to staining
- Easily scratches & etches
- Requires ongoing maintenance

## BUTCHER BLOCK

**Pros**

- Available in multiple species
- Soft material that's easy on glassware and dishes
- Durable when properly maintained
- Nicks and burns can be repaired
- Wood has natural antibacterial properties

**Cons**

- Not heat or stain resistant
- Wood can swell and shrink depending on humidity
- Prolonged exposure to water may cause discoloration
- Maintenance is required

## QUARTZ

**Pros**

- Available in many colors and patterns
- Slabs are consistent
- Available in larger slab sizes
- Durable
- No maintenance
- Non-porous

**Cons**

- Not heat resistant
- Not recommended for outdoor use

## CORIAN

**Pros**

- No maintenance
- Wide variety of colors and patterns
- Softer feel than other surfaces
- Can be repaired
- Integrated sink bowls available
- Non-porous

**Cons**

- Not heat resistant
- Can scratch and chip
- Subject to staining

## LAMINATE

**Pros**

- Affordable
- Integrated backsplashes available
- Non-porous
- Wide variety of colors and patterns

**Cons**

- Can scratch or crack
- Not heat resistant

# HARDWARE

When deciding on your hardware, it's mostly about personal preference and budget. Hardware is typically one of the last choices you make after the kitchen is designed and ordered. Your designer will help you make sure your choices integrate with your overall style and size your hardware appropriately.

## FINISH & MATERIAL

You can choose from a variety of materials and styles. Some common finishes are shown here, however there may be more options depending on the style and brand you choose.



Design-Craft Cabinetry



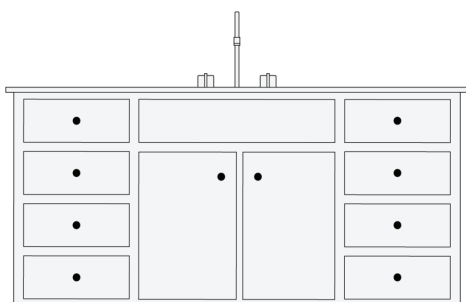
Design-Craft Cabinetry



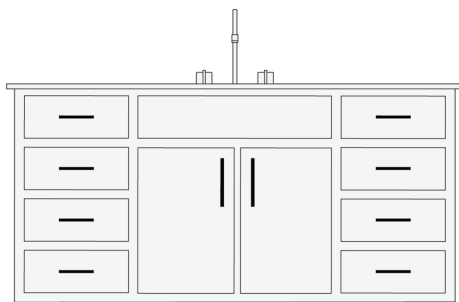
## KNOBS OR PULLS

Knobs are typically found on cabinet doors, while pulls are more often found on drawers. Below are some examples and guidelines, however, there are no rules. Do what feels right for you and your space.

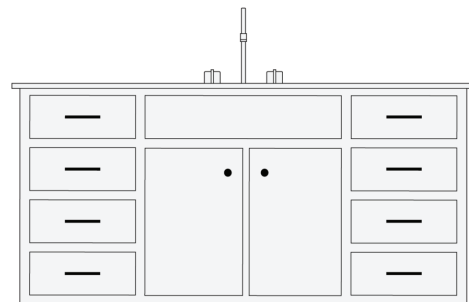
You can browse inspiration galleries online, visit our showroom or rely on your designer to help you make this choice.



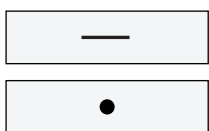
KNOBS



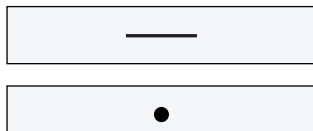
PULLS



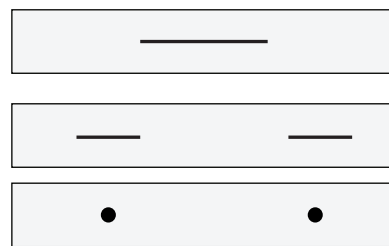
KNOBS +  
PULLS



**Small Drawers** that are 12" or less often work well with a pull that is 3" to 4" long or a single knob



**Medium Drawers** that are between 12" to 24" work well with a pull that is between 4" to 8" long or a single knob



**Large Drawers** that are 24" to 48" work well with a pull that is longer than 8." Using two smaller pulls or knobs for a large drawer can be a great option.



Medallion Cabinetry, Platinum Line





Shiloh Cabinetry

If you're ready to get started on your project, please reach out to schedule your initial design consultation. Good design takes time, but our team is skilled in leading you through these decisions, educating you along the way and assisting you in making the best decisions for your unique space.



# KITCHEN INVENTORY

When planning your kitchen, it is often helpful to take into account what you have. Make sure you create space for all of your dishes, utensils, appliances, ingredients and other items, so you can design and set up your kitchen exactly how you like it. All kitchens are different. Below is a general kitchen inventory you can use as a basic guideline to start with.

<b>Appliances</b>	<b>Cooking</b>	<b>Food</b>	<b>Storage</b>
Stove	Cooking Utensils	Spices	Dishes
Hood	Pots + Pans	Bread Box	Silverware
Refrigerator	Sheet Trays	Wine Glasses	Cups + Mugs
Microwave	Mixing Bowls	Liquor Cabinet	Water Bottles
Dishwasher	Measuring Cups	Flour + Sugar	Storage Containers
Beverage Fridge	Serving Dishes	Potatoes	Aluminum Foil
Food Processor	Knives	Oil + Vinegar	Plastic Wrap
Mixer	Cutting Boards	Cereal + Grains	Plastic Bags
Kettle	Drying Racks	Canned Goods	
Coffee Maker	Oven Mitts	Fruit	
Toaster	Dish Towels	Snacks	
Blender	Silverware		

# NOTES





Gloucester | Waltham  
978-281-2421  
grandbanksbp.com  
team@grandbanksbp.com