

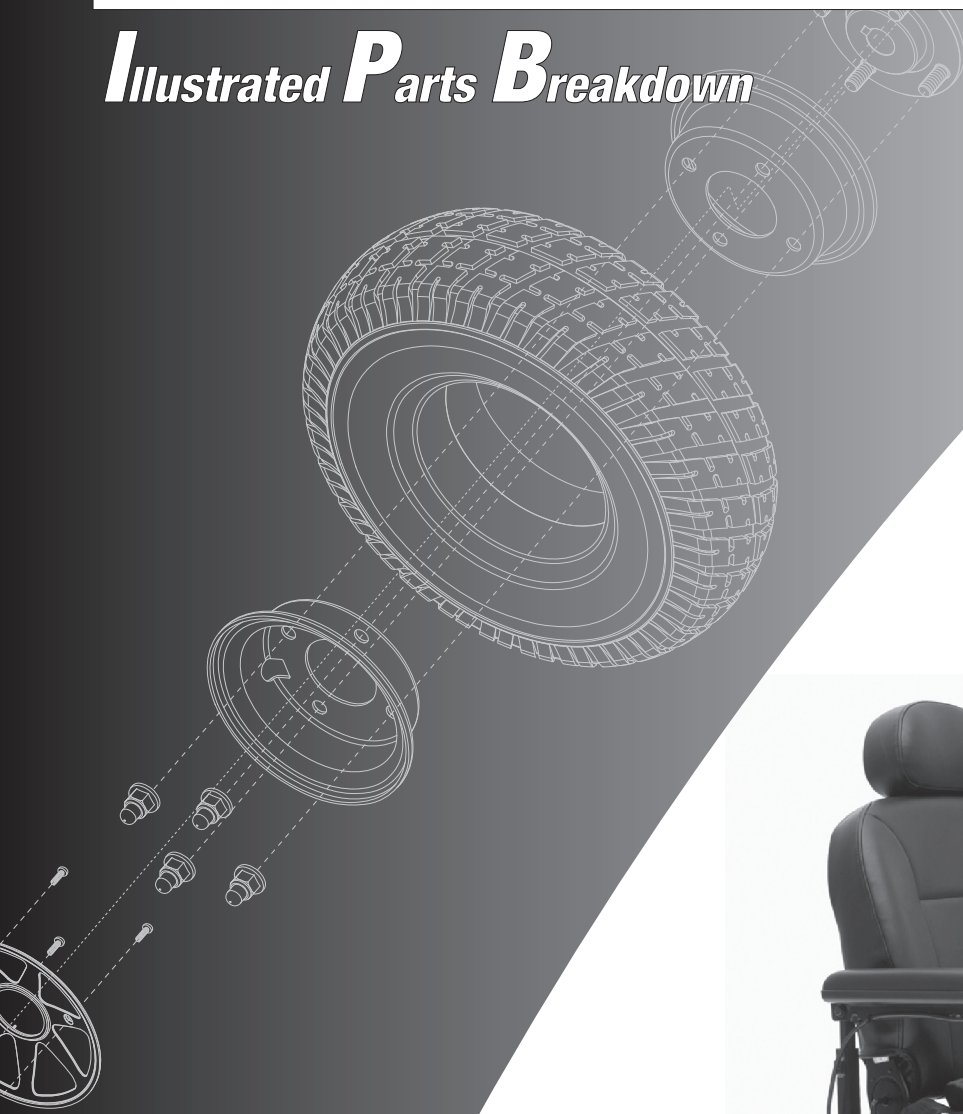
# *Jazzy<sup>®</sup> Select Elite (Gen. 2)*

# *Jazzy<sup>®</sup> Elite ES Series*

US

AGEN# 038 609 661

## *Illustrated Parts Breakdown*



*Applicable to units  
with Serial Numbers  
that begin with JC1  
for Select Elite Gen. 2  
and Elite ES units  
and JD3 for  
Elite ES-1 units*



# **Pride<sup>®</sup>**

Your new Pride Illustrated Parts Breakdown (IPB) Manual has been compiled from the latest product information available at the time of publication. Pride<sup>®</sup> Mobility Products Corporation reserves the right to make changes and updates to this manual and to the product(s) it represents. Any changes, updates, or improvements to the product(s) may result in slight differences between this manual and the product you purchased.

An IPB is an illustrated parts listing of all product components which have maintenance significance. IPB's utilize "exploded" drawings to detail the individual components for each assembly and an itemized list of reference numbers, part numbers, descriptions, and quantities per assembly. Some parts may be included in an assembly but may not be available for purchase separately. Refer to the parts list to locate the part numbers for assemblies and components for ordering what you need.

To achieve proper identification and relationship of detail parts and next higher assemblies, parts listings are presented in a convenient alphanumeric reference system. Reference numbers for parent assemblies identify one part number that can be used to order all of the components listed within it. Components of an assembly will have the same alpha character as its parent assembly.

- For example, the parent assembly part number using reference number of A1 — A4 is the only number you need to place an order for parts with references of A1, A2, A3, and A4. Instead of ordering 4 separate parts, use the parent assembly part number to get the complete assembly.

Master assembly part numbers have reference numbers that include several subassemblies. By ordering parts using master assembly part numbers, you can save a lot of time and reduce the chance for error.

- For example, A1 — G10, a master assembly reference number, includes all components of assemblies A, B, C, D, E, F, and G. Use caution when ordering assemblies. Check to see if a master assembly part number exists for the components that you need. If an entire master assembly is not needed, then the individual assembly part number (i.e. for reference number G1 — G10) will be sufficient to use for ordering.

Asterisks (\*) and NOTES are used throughout this service manual to point out important information regarding assembly structure and contents.

- For example, in some illustrations, only the left OR right side is shown. In other drawings, only the front OR back is depicted. The part numbers for ALL components are listed. An asterisk will also be used to indicate which components are not illustrated. Illustrated Items without callouts are shown for assembly purposes.

Updates to the contents of this IPB will be made on a regular basis. Providers may retrieve updates immediately upon their release by going to the Pride Service Website. The web address is [www.prideprovider.com](http://www.prideprovider.com). We welcome any questions or comments regarding the new Pride IPB Manual that you may have.

Please note all pricing included with this manual is subject to change without prior notice from Pride.

Thank you for choosing products from Pride<sup>®</sup> Mobility Products Corporation.

**SECTION I.**

Main Frame Assembly  
    Select Elite Gen.2/Elite ES ..... 4  
    Elite ES-1 ..... 5

**SECTION II.**

Caster and Battery Strap Assembly ..... 6

**SECTION III.**

Motor Assembly ..... 7

**SECTION IV.**

Controller Assembly ..... 8

**SECTION V.**

Footrest Assembly ..... 9

**SECTION VI.**

Electronics Assembly  
    Select Elite Gen.2/Elite ES ..... 10  
    Elite ES-1 ..... 11

**SECTION VII.**

Shroud Assembly ..... 12  
Shroud Assembly, Painted Color ..... 14

**SECTION VIII.**

Wheel Assembly ..... 16

**SECTION IX.**

Charger Assembly ..... 17

**SECTION X.**

Owner's Packages ..... 18

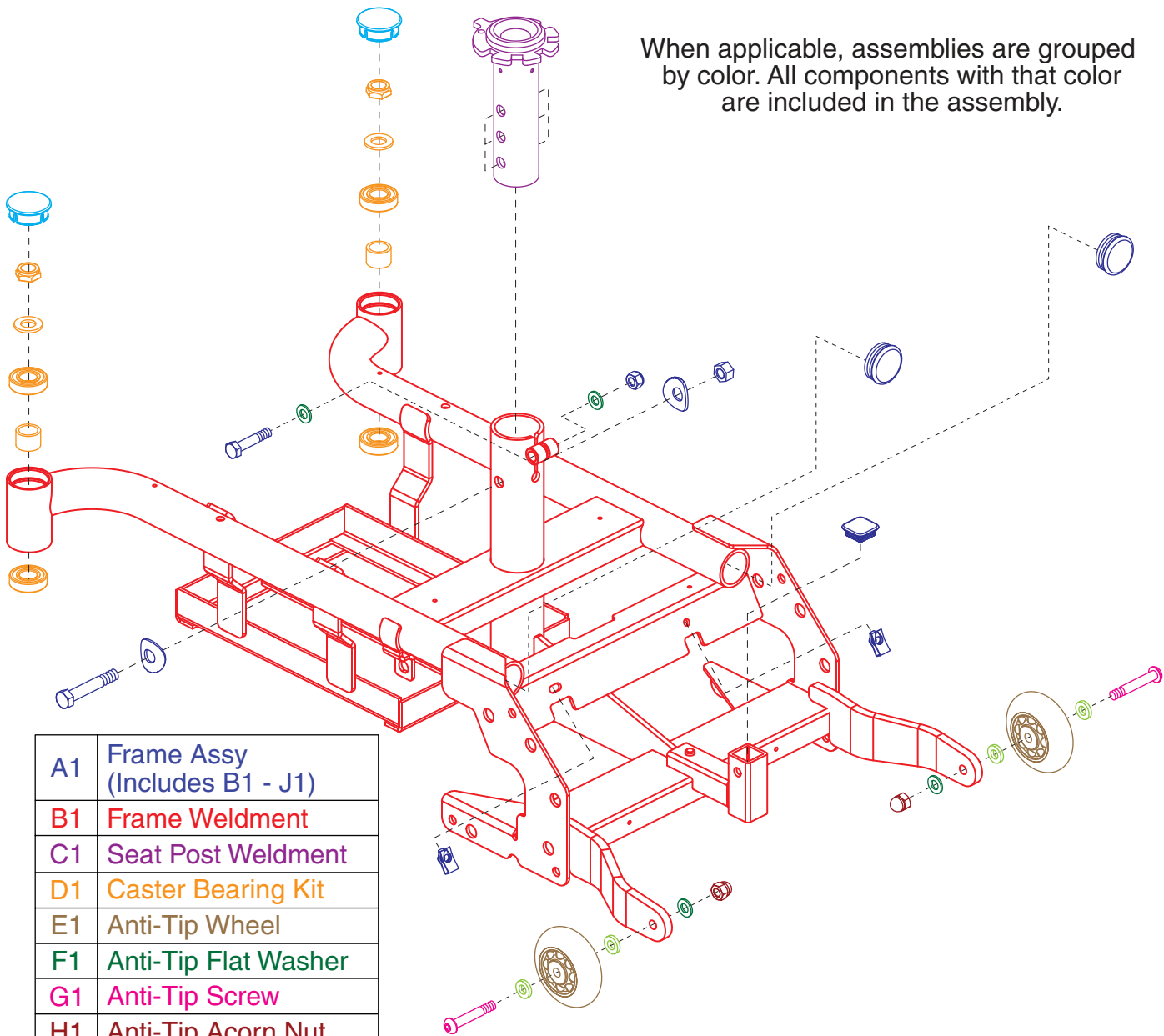
**SECTION XI.**

Decal Packages ..... 20

**APPENDIX A.**

Electronics Diagram ..... 22

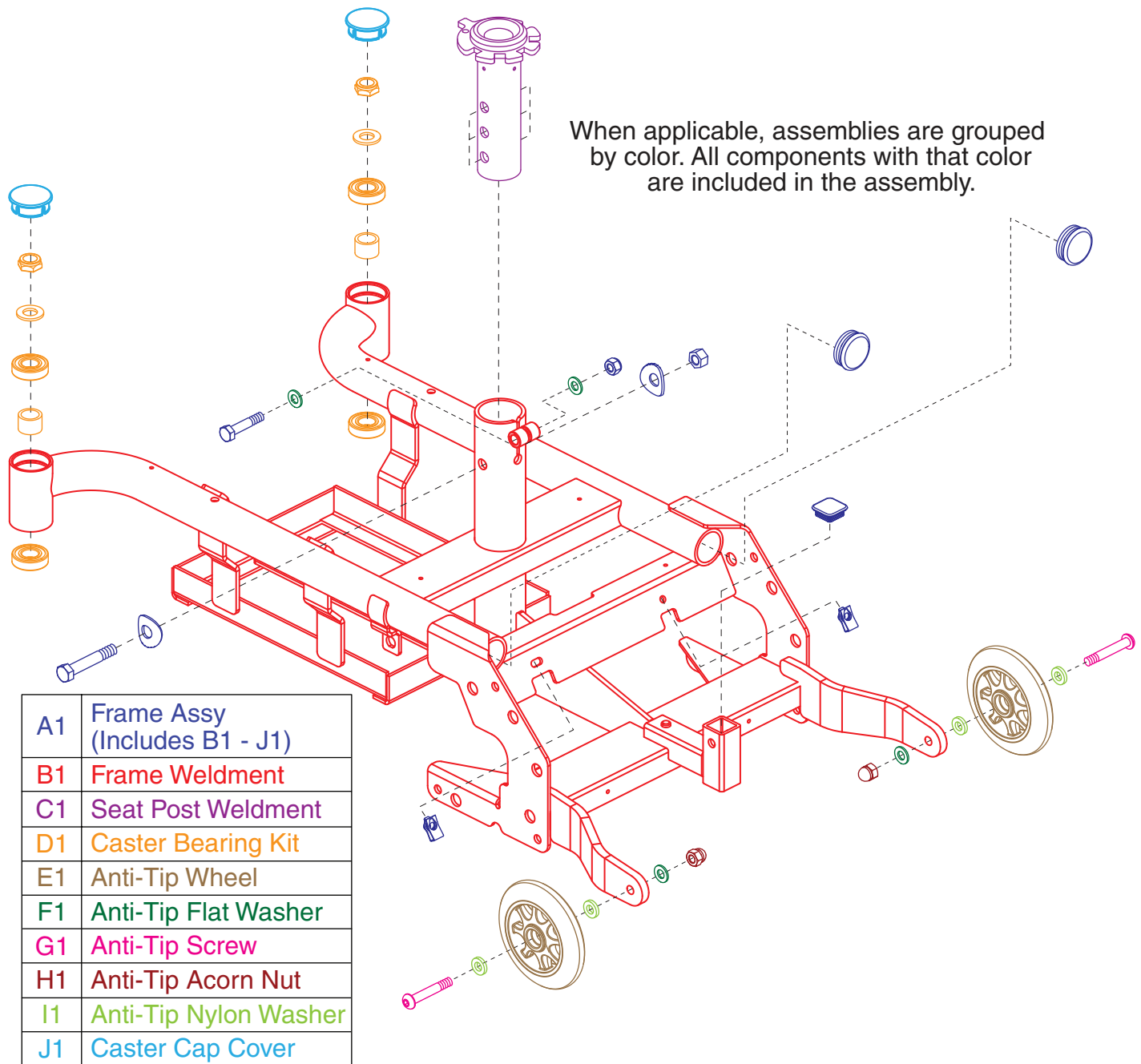
When applicable, assemblies are grouped by color. All components with that color are included in the assembly.



A1	Frame Assy (Includes B1 - J1)
B1	Frame Weldment
C1	Seat Post Weldment
D1	Caster Bearing Kit
E1	Anti-Tip Wheel
F1	Anti-Tip Flat Washer
G1	Anti-Tip Screw
H1	Anti-Tip Acorn Nut
I1	Anti-Tip Nylon Washer
J1	Caster Cap Cover

REF #	PART #	DESCRIPTION	QTY	Dealer \$	MSRP	11i
A1	FRMASMB17541	FRAME,ASSY,MAIN,JAZZY SELECT ELITE,GEN 2,E-1033-033	1	\$133.9	\$341.45	
B1	DWR1033D038	FRAME,WELDMENT,MAIN,BLACK,MODIFIED, D1033-038	1	\$80.44	\$205.12	
C1	DWR1060C099	SEAT POST WELDMENT,UPPER W/BUSHING,3 HOLE,ADJUSTABLE,C-1060-099	1	\$11.01	\$28.07	
D1	HDWASMB1092	CASTER BEARING KIT,M3.5,FRONT/REAR CASTER,B-1202-001	2	\$8.47	\$21.61	
E1	WHLATIP1004	WHEEL,ANTI-TIP,BLACK,3" DIAMETER	2	\$2.08	\$5.31	
F1	WASMETR1029	WASHER,FLAT,BLACK ZINC,8.4MM ID X 16MM OD X 1.6MM TH,METRIC,GB96-8	4	\$1.28	\$3.25	
G1	SCRASBH1247	SCREW,BHSCS,BLACK ZINC,M8-1.25 X 50MM	2	\$1.18	\$3.02	
H1	NUTACRN1012	NUT,ACORN,BLACK ZINC,M8-1.25	2	\$1.18	\$3.01	
I1	WASNLYN1085	WASHER,BLACK,NYLON,8.5MM ID X 16MM OD X 3MM TH	4	\$1.14	\$2.91	
J1	DWR1033C017	COVER,CASTER CAP,PLASTIC,CASTER BARREL, C1033-017	2	\$1.18	\$3.02	

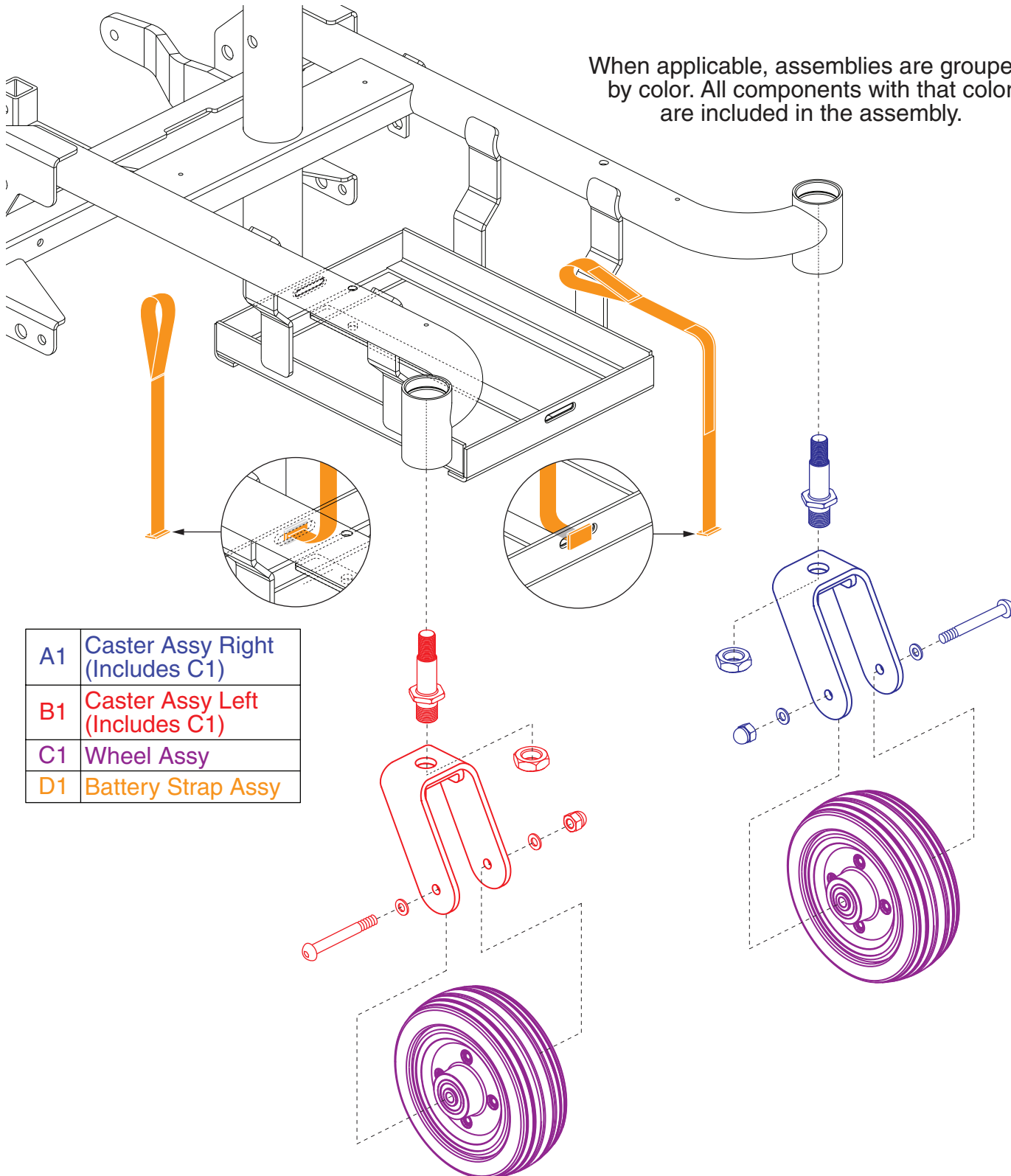
# I. Main Frame Assembly — Elite ES-1



REF #	PART #	DESCRIPTION	QTY	Dealer \$	MSRP
A1	MEC132833	FRAME,ASSY,MAIN,JAZZY ELITE ES-1,E-1033-033	1	N/A	N/A
B1	DWR1033D038	FRAME,WELDMENT,MAIN,BLACK,MODIFIED, D1033-038	1	\$80.44	\$205.12
C1	DWR1060C099	SEAT POST WELDMENT, UPPER W/BUSHING,3 HOLE,ADJUSTABLE,C-1060-099	1	\$11.01	\$28.07
D1	HDWASMB1092	CASTER BEARING KIT,M3.5,FRONT/REAR CASTER,B-1202-001	2	\$8.47	\$21.61
E1	WHLASMB2077	WHEEL,ASSY,ANTI-TIP,BLACK RIM/BLACK TIRE,129.9MM,ROLLER BLADE STYLE,B-1116-057	2	\$14.56	\$37.14
F1	WASMETR1029	WASHER,FLAT,BLACK ZINC,8.4MM ID X 16MM OD X 1.6MM TH,METRIC,GB96-8	4	\$1.28	\$3.25
G1	SCRASBH1247	SCREW,BHSCS,BLACK ZINC,M8-1.25 X 50MM	2	\$1.18	\$3.02
H1	NUTACRN1012	NUT,ACORN,BLACK ZINC,M8-1.25	2	\$1.18	\$3.01
I1	WASNYLN1085	WASHER,BLACK,NYLON,8.5MM ID X 16MM OD X 3MM TH	4	\$1.14	\$2.91
J1	DWR1033C017	COVER,CASTER CAP,PLASTIC,CASTER BARREL, C1033-017	2	\$1.18	\$3.02

## II. Caster and Battery Strap Assembly

When applicable, assemblies are grouped by color. All components with that color are included in the assembly.



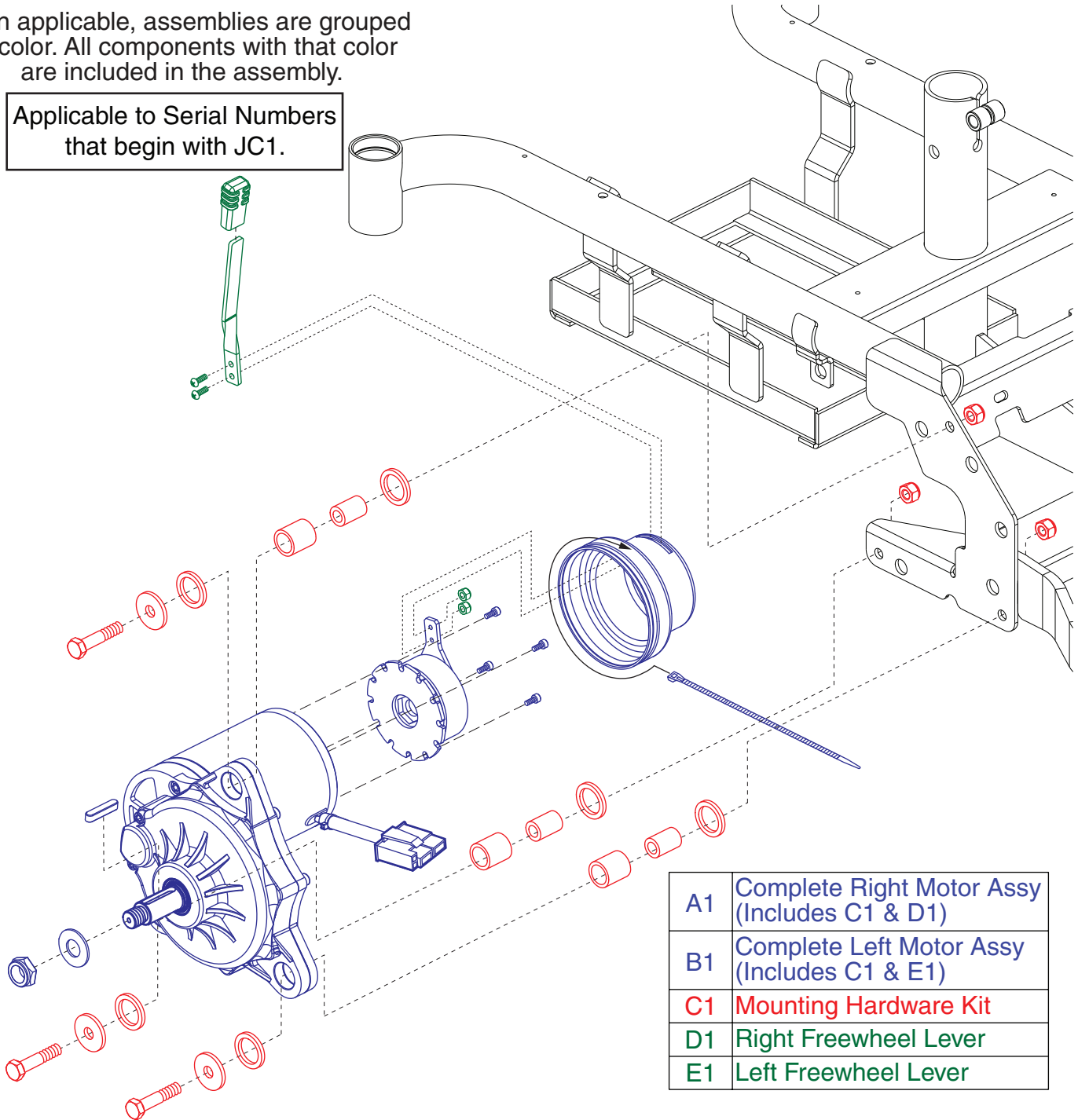
A1	Caster Assy Right (Includes C1)
B1	Caster Assy Left (Includes C1)
C1	Wheel Assy
D1	Battery Strap Assy

REF #	PART #	DESCRIPTION	QTY	Dealer \$	MSRP	11i
A1	FRMASMB15655	CASTER,ASSY,W/BLACK 6" X 2" FLAT FREE WHEEL,RIGHT,D-1202-041	1	\$52.42	\$133.66	
B1	FRMASMB15653	CASTER,ASSY,W/BLACK 6" X 2" FLAT FREE WHEEL,LEFT,D-1202-040	1	\$52.42	\$133.66	
C1	WHLASMB2047	WHEEL,ASSY,CASTER,FLAT FREE,SILVER RIM/BLACK TIRE,6" X 2",W/BEARINGS & SPACER,E-1202-019	1	\$35.48	\$90.48	
D1	ACCASMB2627	BATTERY STRAP,ASSY,BLACK,NYLON,W/VELCRO ATTACHMENT,D-1033-036	1	\$1.62	\$4.13	

### III. Motor Assembly

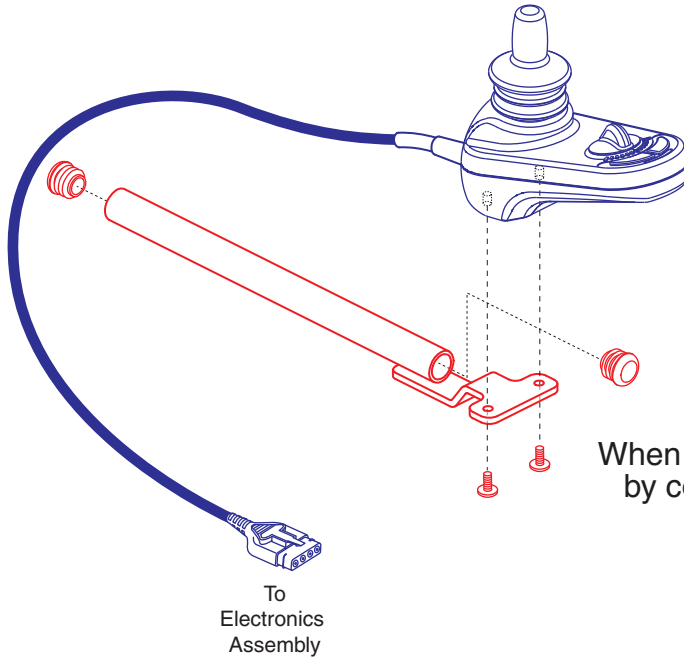
When applicable, assemblies are grouped by color. All components with that color are included in the assembly.

Applicable to Serial Numbers that begin with JC1.



A1	Complete Right Motor Assy (Includes C1 & D1)
B1	Complete Left Motor Assy (Includes C1 & E1)
C1	Mounting Hardware Kit
D1	Right Freewheel Lever
E1	Left Freewheel Lever

REF #	PART #	DESCRIPTION	QTY	Dealer \$	MSRP	11i
A1	DRVASMB2299	MOTOR,ASSY,DRIVE,JAZZY SELECT ELITE,RIGHT,W/FREEWHEEL & MOUNTING HARDWARE,GC3 CONNECTOR	1	\$194.52	\$496.02	
B1	DRVASMB2298	MOTOR,ASSY,DRIVE,JAZZY SELECT ELITE,LEFT,W/FREEWHEEL & MOUNTING HARDWARE,GC3 CONNECTOR	1	\$194.52	\$496.02	
C1	HDWASMB1165	MOTOR MOUNT HARDWARE PACKAGE,ASSY,C-1033-011	3	\$8.04	\$20.49	
D1	FRMASMB15456	FREEWHEEL LEVER,ASSY,RIGHT,B-1033-010	1	\$2.19	\$5.58	
E1	FRMASMB15800	FREEWHEEL LEVER,ASSY,LEFT,B-1033-014	1	\$2.19	\$5.58	



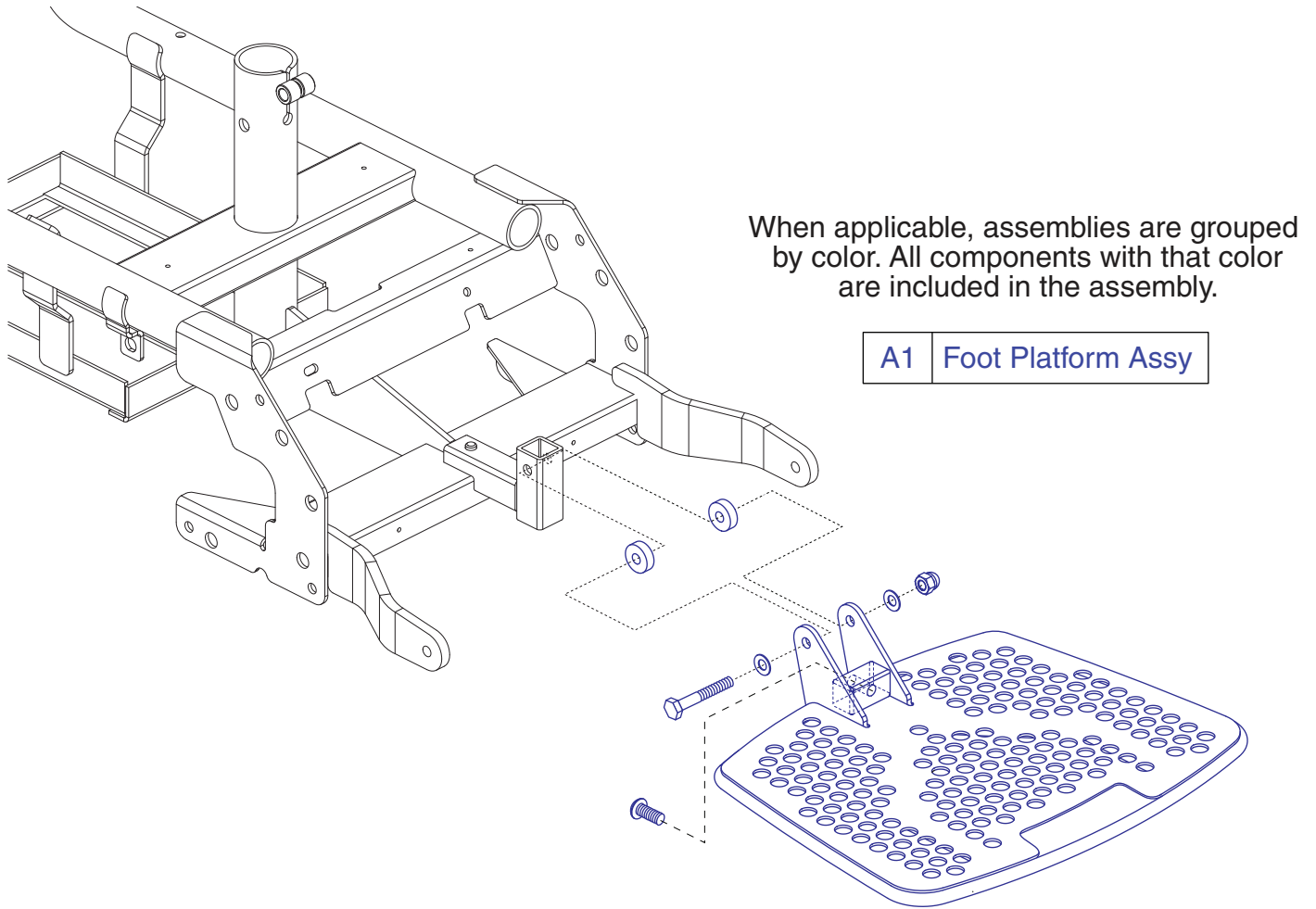
When applicable, assemblies are grouped by color. All components with that color are included in the assembly.

A1	GC2/GC3 Controller
B1	Joystick Mounting Bracket

REF #	PART #	DESCRIPTION	QTY	Dealer \$	11i MSRP
A1	CTLDC1574	CONTROLLER,GC2/GC3,2 KEY W/SPEED DIAL,JOYSTICK MODULE,H-1111-359,(P&G: D51157)	1	\$244.04	\$622.29
B1	FRMASMB9532	JOYSTICK MOUNTING BRACKET,ASSY,GC/VR2 CONTROLLER,INLINE	1	\$6.13	\$15.62



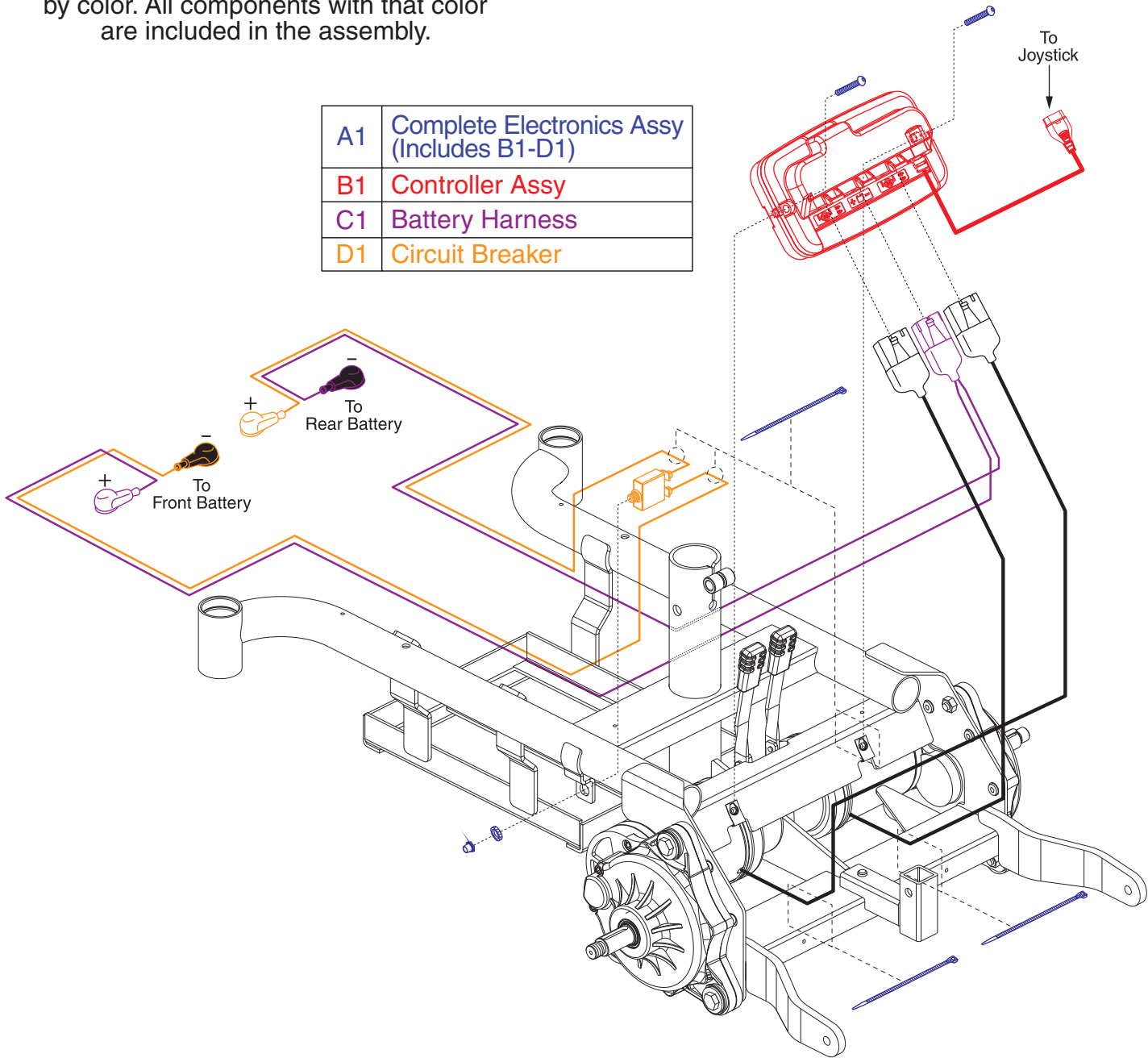
# V. Footrest Assembly



REF #	PART #	DESCRIPTION	QTY	Dealer \$	11i MSRP
A1	FRMASMB17659	FOOT PLATFORM,ASSY,W/MOUNTING HARDWARE,LARGE,PERFORATED,E-1201-087	1	\$39.23	\$100.04

When applicable, assemblies are grouped by color. All components with that color are included in the assembly.

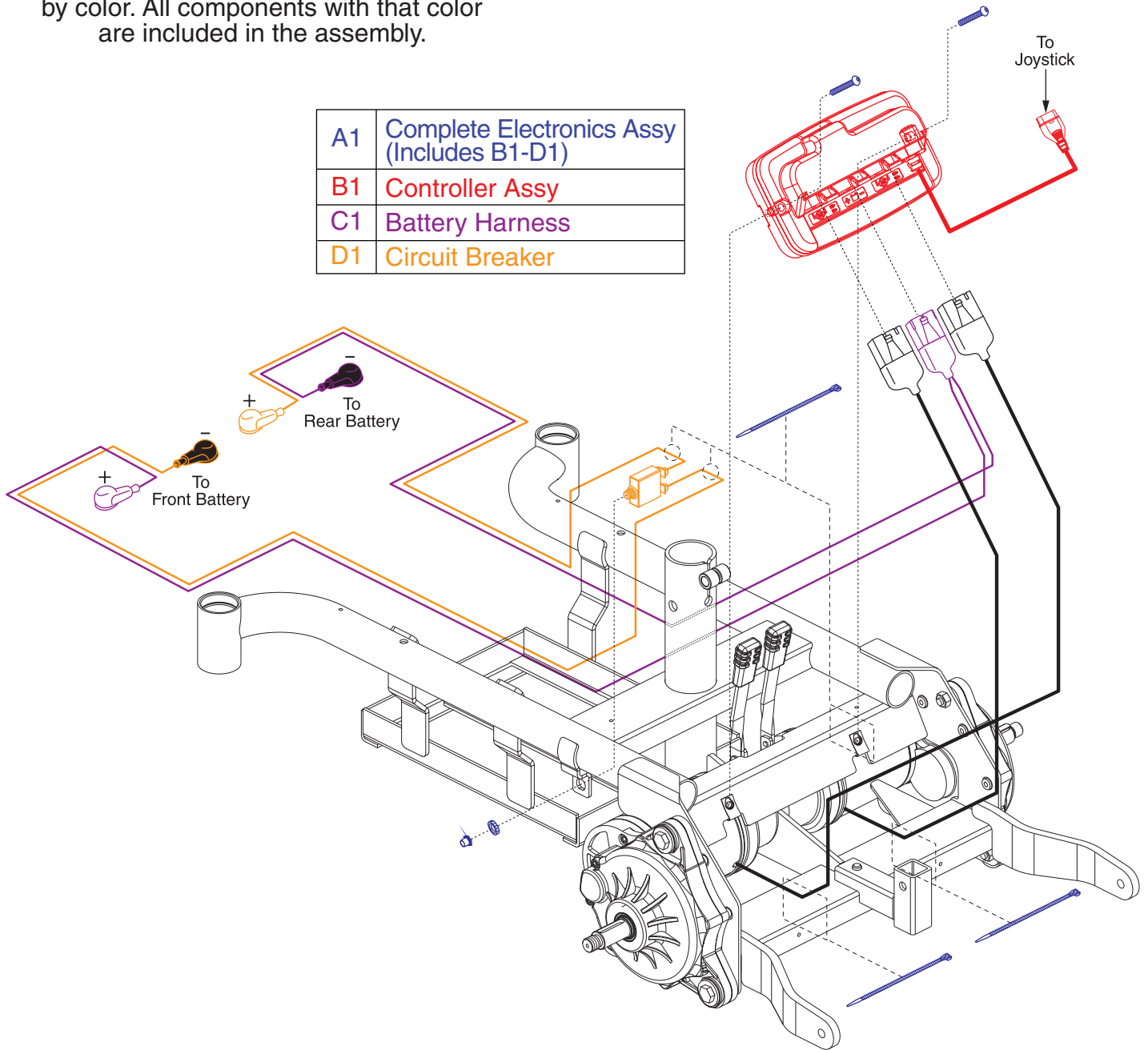
A1	Complete Electronics Assy (Includes B1-D1)
B1	Controller Assy
C1	Battery Harness
D1	Circuit Breaker



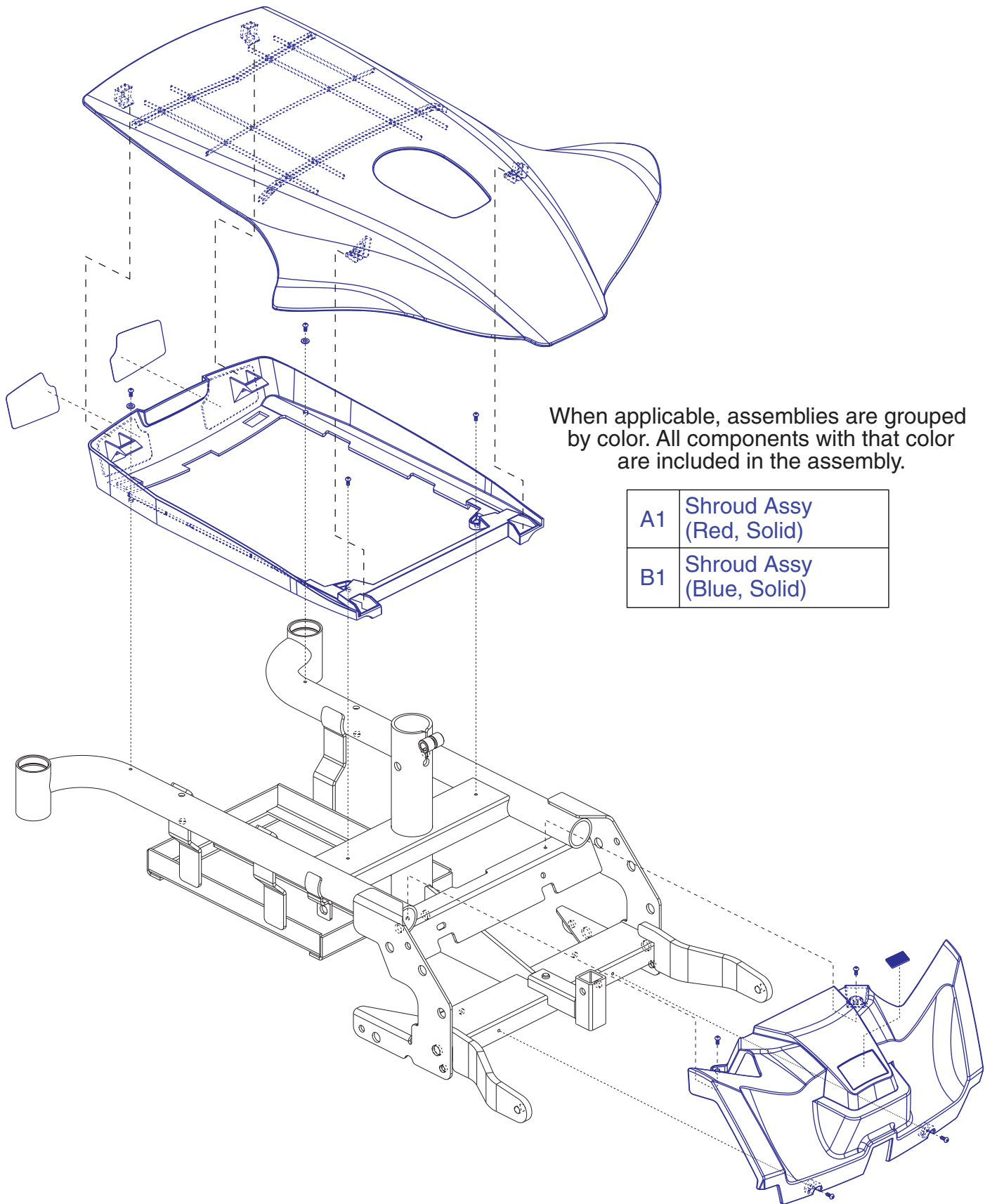
REF #	PART #	DESCRIPTION	QTY	Dealer \$	MSRP	11i
A1	ELEASMB7083	ELECTRONIC,ASSY,GC3,SELECT ELITE,OFFBOARD CHARGER	1	\$199.56	\$508.88	
B1	ELEASMB7082	CONTROLLER,GC3,ASSY,40 AMP,SELECT ELITE PROGRAM	1	\$144.53	\$368.54	
C1	DWR1060H018	ELECTRONIC,HARNESS,BATTERY CABLE,SELECT GT,H-1060-018	1	\$30.05	\$76.62	
D1	ELECBRK1005	ELECTRONIC,CIRCUIT BREAKER,30 AMP	1	\$19.04	\$48.55	

When applicable, assemblies are grouped by color. All components with that color are included in the assembly.

A1	Complete Electronics Assy (Includes B1-D1)
B1	Controller Assy
C1	Battery Harness
D1	Circuit Breaker

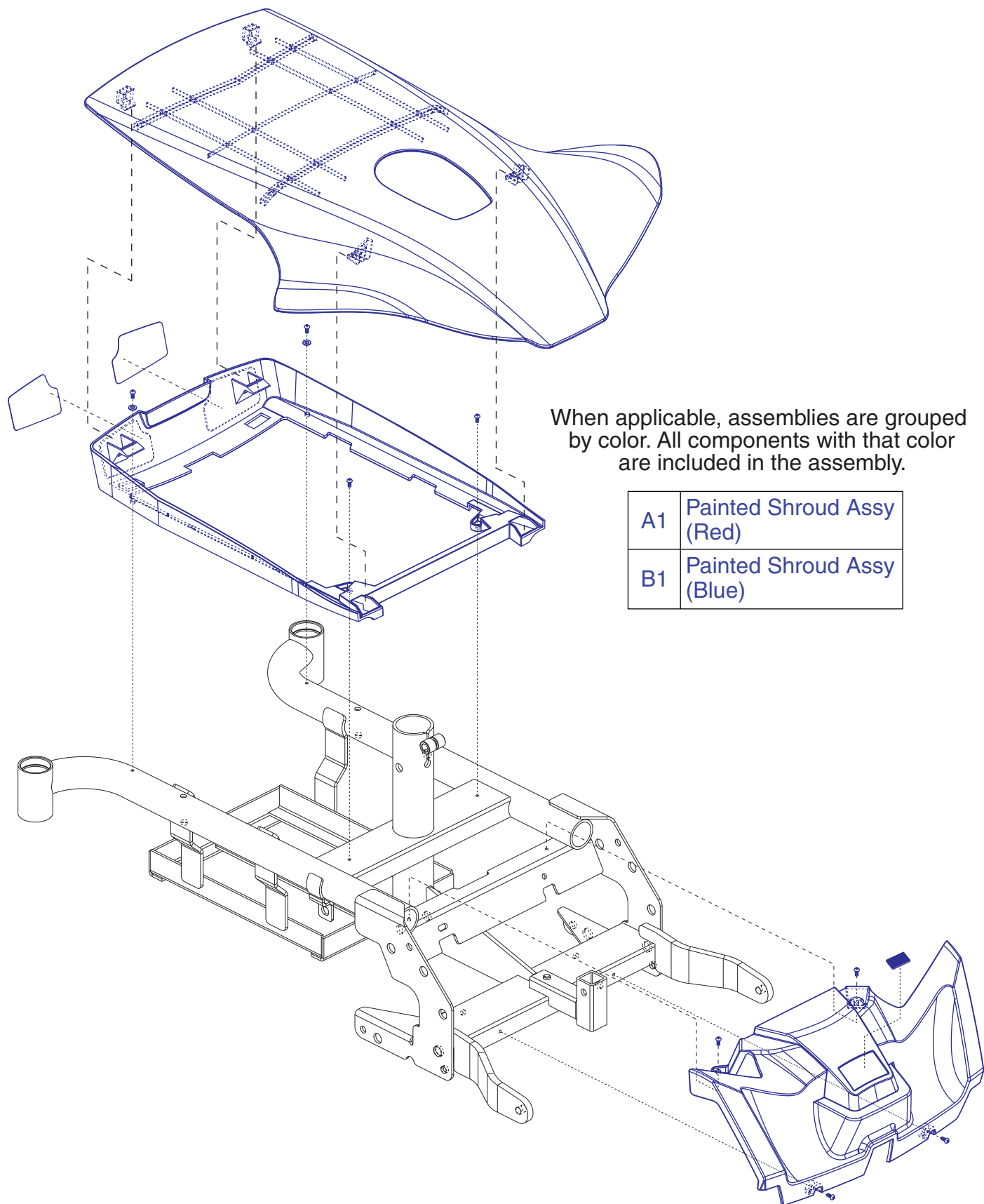


REF #	PART #	DESCRIPTION	QTY	Dealer \$	MSRP	11i
A1	ELE133946	ELECTRONIC,ASSY,GC3,JAZZY ELITE ES-1	1	\$192.88	\$491.84	
B1	CTL133945	CONTROLLER,GC3,ASSY,40 AMP,JAZZY ELITE ES-1 PROGRAM	1	\$141.69	\$361.31	
C1	DWR1060H018	ELECTRONIC,HARNESS,BATTERY CABLE,SELECT GT,H-1060-018	1	\$30.05	\$76.62	
D1	ELECBRK1005	ELECTRONIC,CIRCUIT BREAKER,30 AMP	1	\$19.04	\$48.55	



## VII. Shroud Assembly

REF #	PART #	DESCRIPTION	QTY	Dealer \$	MSRP	11i
A1	SHDASMB6362	SHROUD,ASSY,RED,SOLID COLOR,JAZZY SELECT ELITE,GEN 2	1	\$110.77	\$282.46	
B1	SHDASMB6363	SHROUD,ASSY,BLUE,SOLID COLOR,JAZZY SELECT ELITE,GEN 2	1	\$103.42	\$263.73	

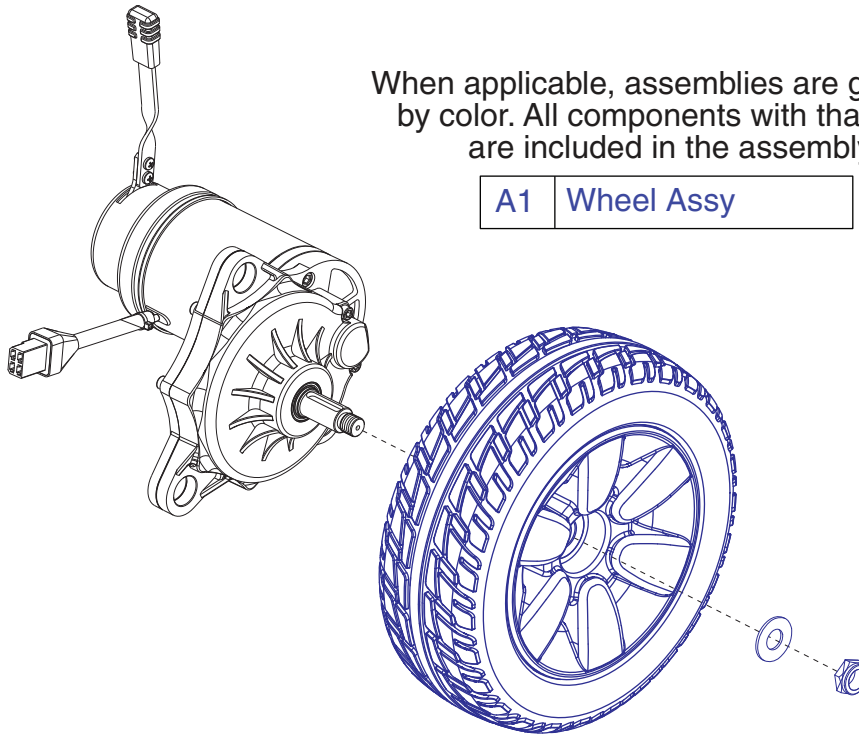


## VII. Shroud Assembly, Painted Color

REF #	PART #	DESCRIPTION	QTY	Dealer \$	MSRP	11i
A1	DGN1702485	SHROUD,ASSY,CANDY APPLE RED,JAZZY SELECT ELITE,GEN 2	1	\$26.01	\$66.33	
B1	DGN1702484	SHROUD,ASSY,VIPER BLUE,JAZZY SELECT ELITE,GEN 2	1	N/A	N/A	

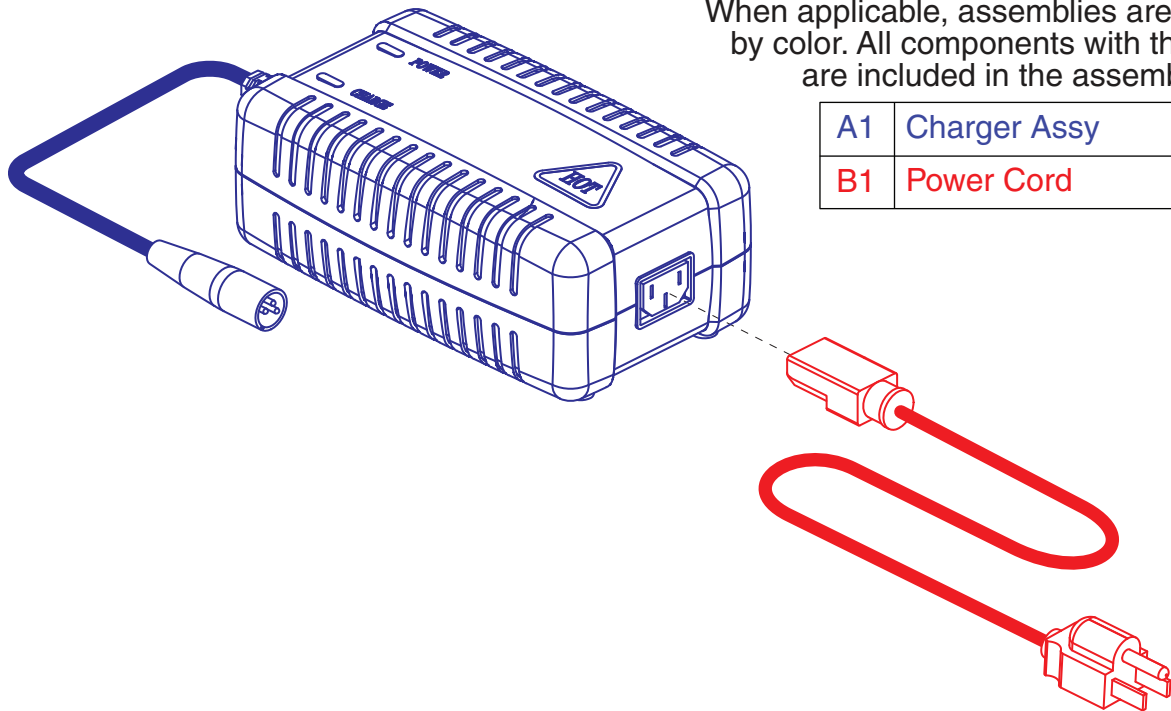
When applicable, assemblies are grouped by color. All components with that color are included in the assembly.

A1 Wheel Assy



REF #	PART #	DESCRIPTION	QTY	Dealer \$	MSRP	11i
A1	WHLASMB2017	WHEEL,ASSY,FLAT FREE DRIVE WHEEL,SILVER RIM/BLACK TIRE,9",D-1203-064	2	\$42.45	\$108.25	





When applicable, assemblies are grouped by color. All components with that color are included in the assembly.

A1	Charger Assy
B1	Power Cord

REF #	PART #	DESCRIPTION	QTY	Dealer \$	MSRP	11i
A1	ELEASMB5713	CHARGER,ASSY,OFFBOARD,LOW INHIBIT,100V-240V,3.5 AMP,W/XLR HARNESS,CE/CUL/UL APPROVED,W/UNITED STATES POWERCORD	1	\$60.34	\$153.86	
B1	HARUSHD1065	ELECTRONIC,HARNESS,POWER CORD,IEC - USA,H-1000-128	1	\$6.15	\$15.69	

# X. Owner's Packages

## Jazzy Select Elite Gen. 2

REF #	PART #	DESCRIPTION	QTY	Dealer \$	MSRP	11i
*N/A	INDASMB2092	OWNER'S PACKAGE,ASSY,JAZZY SELECT ELITE,GEN 2	1	N/A	N/A	
*N/A	INFMANU4183	MANUAL,OWNER'S,JAZZY SELECT ELITE,GEN 2	1	N/A	N/A	
*N/A	INFINFB2713	MANUAL,PRODUCT SPECIFICATION SHEET,JAZZY SELECT ELITE,GEN 2	1	N/A	N/A	
*N/A	INFINFB1137	MANUAL,WARRANTY CARD,ENGLISH	1	N/A	N/A	
*N/A	PROZBAG1003	BAG,10"L X 12"W X 2MM,ZIPLOCK	1	N/A	N/A	
*N/A	PLSTIE1015	CABLE TIE,BLACK,NYLON,7.5-8MM W X 200-220MM L,100 LBS MINIMUM TESILE STRENGTH	5	N/A	N/A	
*N/A	DWR1020L003	HANG TAG,FULLY RECHARGE BATTERY BEFORE INITIAL USE,6-1/4" X 3-3/8",L-1020-003	1	\$1.1	\$2.81	
*N/A	DWR1235L519	HANG TAG,ROUND,GENERIC,COUNTRY OF ORIGIN,L-1235-519	1	\$1.1	\$2.81	
*N/A	HDWINDV1058	HEX KEY,BLACK,4MM	1	\$1.2	\$3.07	
*N/A	VELDBLS1001	REUSABLE FASTENER,1/2"W X 8"L,HOOK & LOOP	1	\$1.18	\$3.02	
*N/A	INFMANU3992	MANUAL,CONSUMER SAFETY GUIDE,POWERCHAIR	1	\$1.15	\$2.92	

## Jazzy Elite ES

REF #	PART #	DESCRIPTION	QTY	Dealer \$	MSRP	11i
*N/A	INDASMB7120013	OWNER'S PACKAGE,ASSY,JAZZY ELITE ES	1	N/A	N/A	
*N/A	INFMANU4355	MANUAL,OWNER'S,JAZZY ELITE ES,US	1	\$5.62	\$14.34	
*N/A	INFINFB3046	MANUAL,PRODUCT INSERT SHEET,JAZZY ELITE ES PRODUCT SPECIFICATIONS,US	1	\$1.12	\$2.86	
*N/A	INFINFB1137	MANUAL,WARRANTY CARD,ENGLISH	1	N/A	N/A	
*N/A	PROZBAG1003	BAG,10"L X 12"W X 2MM,ZIPLOCK	1	N/A	N/A	
*N/A	PLSTIE1013	CABLE TIE,BLACK,NYLON,8" L,40 LBS TENSILE STRENGTH	5	\$1.1	\$2.81	
*N/A	DWR1020L003	HANG TAG,FULLY RECHARGE BATTERY BEFORE INITIAL USE,6-1/4" X 3-3/8",L-1020-003	1	\$1.1	\$2.81	
*N/A	DWR1235L519	HANG TAG,ROUND,GENERIC,COUNTRY OF ORIGIN,L-1235-519	1	\$1.1	\$2.81	
*N/A	HDWINDV1058	HEX KEY,BLACK,4MM	1	\$1.2	\$3.07	
*N/A	VELDBLS1001	REUSABLE FASTENER,1/2"W X 8"L,HOOK & LOOP	1	\$1.18	\$3.02	
*N/A	INFMANU3992	MANUAL,CONSUMER SAFETY GUIDE,POWERCHAIR	1	\$1.15	\$2.92	

### Notes :

\*N/A Not applicable.

# X. Owner's Packages

## Jazzy Elite ES w/ Armor

REF #	PART #	DESCRIPTION	QTY	Dealer \$	MSRP	11i
*N/A	INDASMB7120015	OWNER'S PACKAGE,ASSY,JAZZY ELITE ES,W/ARMOR	1	N/A	N/A	
*N/A	INFMANU4355	MANUAL,OWNER'S,JAZZY ELITE ES,US	1	\$5.62	\$14.34	
*N/A	INFINFB3046	MANUAL,PRODUCT INSERT SHEET,JAZZY ELITE ES PRODUCT SPECIFICATIONS,US	1	\$1.12	\$2.86	
*N/A	INFINFB1137	MANUAL,WARRANTY CARD,ENGLISH	1	N/A	N/A	
*N/A	PROZBAG1003	BAG,10"L X 12"W X 2MM,ZIPLOCK	1	N/A	N/A	
*N/A	PLSTIE1013	CABLE TIE,BLACK,NYLON,8" L,40 LBS TENSILE STRENGTH	5	\$1.1	\$2.81	
*N/A	DWR1235L519	HANG TAG,ROUND,GENERIC,COUNTRY OF ORIGIN,L-1235-519	1	\$1.1	\$2.81	
*N/A	HDWINDV1058	HEX KEY,BLACK,4MM	1	\$1.2	\$3.07	
*N/A	VELDBLS1001	REUSABLE FASTENER,1/2"W X 8"L,HOOK & LOOP	1	\$1.18	\$3.02	
*N/A	INFMANU3992	MANUAL,CONSUMER SAFETY GUIDE,POWERCHAIR	1	\$1.15	\$2.92	
*N/A	DWR1033C068B	SCUFF GUARD,BLACK,FENDER,LEFT,SELECT ELITE,GEN 2,C-1033-068	1	N/A	N/A	
*N/A	DWR1033C069B	SCUFF GUARD,BLACK,FENDER,RIGHT,SELECT ELITE,GEN 2,C-1033-069	1	N/A	N/A	
*N/A	DWR1033C070B	SCUFF GUARD,BLACK,INNER FENDER,LEFT,SELECT ELITE,GEN 2,C-1033-070	1	N/A	N/A	
*N/A	DWR1033C071B	SCUFF GUARD,BLACK,INNER FENDER,RIGHT,SELECT ELITE,GEN 2,C-1033-071	1	N/A	N/A	
*N/A	DWR1033C072B	SCUFF GUARD,BLACK,REAR,LEFT,SELECT ELITE,GEN 2,C-1033-072	1	N/A	N/A	
*N/A	DWR1033C073B	SCUFF GUARD,BLACK,REAR,RIGHT,SELECT ELITE,GEN 2,C-1033-073	1	N/A	N/A	
*N/A	INFINFB2567	MANUAL,INSTALLATION INSTRUCTIONS,BASIC ARMOR KIT,SELECT ELITE/SELECT 6	1	N/A	N/A	

## Jazzy Elite ES-1

REF #	PART #	DESCRIPTION	QTY	Dealer \$	MSRP	11i
*N/A	INF132835	OWNER'S PACKAGE,ASSY,JAZZY ELITE ES-1	1	N/A	N/A	
*N/A	DWR1235L519	HANG TAG,ROUND,GENERIC,COUNTRY OF ORIGIN,L-1235-519	1	\$1.1	\$2.81	
*N/A	HDWINDV1058	HEX KEY,BLACK,4MM	1	\$1.2	\$3.07	
*N/A	INFINFB1137	MANUAL,WARRANTY CARD,ENGLISH	1	N/A	N/A	
*N/A	INFINFB2782	MANUAL,PRODUCT INSERT SHEET,WARRANTY,STANDARD POWER,ENGLISH	1	\$1.18	\$3.02	
*N/A	INFMANU3992	MANUAL,CONSUMER SAFETY GUIDE,POWERCHAIR	1	\$1.15	\$2.92	
*N/A	INFMANU4355	MANUAL,OWNER'S,JAZZY ELITE ES,US	1	\$5.62	\$14.34	
*N/A	PLSTIE1013	CABLE TIE,BLACK,NYLON,8" L,40 LBS TENSILE STRENGTH	5	\$1.1	\$2.81	
*N/A	PROZBAG1003	BAG,10"L X 12"W X 2MIL,ZIPLOCK	1	N/A	N/A	
*N/A	VELDBLS1001	REUSABLE FASTENER,1/2"W X 8"L,HOOK & LOOP	1	\$1.18	\$3.02	
*N/A	INFINFB3204	MANUAL,PRODUCT SPECIFICATION SHEET,JAZZY ELITE ES-1	1	N/A	N/A	

### Notes :

\*N/A Not applicable.

# XI. Decal Packages

## Jazzy Select Elite Gen. 2

REF #	PART #	DESCRIPTION	QTY	Dealer \$	MSRP	11i
*N/A	DECASMB2330	DECAL,ASSY,JAZZY SELECT ELITE,GEN 2	1	N/A	N/A	
*N/A	DECSERN1035	DECAL,SERIAL NUMBER,2" X 1.25",BARCODE,MADE IN CHINA,W/PRIDE LOGO	1	N/A	N/A	
*N/A	DWR1235L841	DECAL,JAZZY LOGO,L-1235-841	1	\$1.35	\$3.44	
*N/A	DWR1234L004	DECAL,ICON,MAXIMUM WEIGHT CAPACITY,300LBS/135 KG,L-1234-004	1	\$1.28	\$3.26	
*N/A	DWR1235L520	DECAL,CAUTION,EXTENSION CORD/GROUNDING PRONG,L-1235-520	1	\$1.4	\$3.58	
*N/A	DWR1235L512	DECAL,WARNING,EMI-RFI,20V/M,L-1235-512	1	\$1.54	\$3.92	
*N/A	DWR1235L521	DECAL,WARNING,CONTROLLER CORD PLACEMENT,L-1235-521	1	\$1.29	\$3.3	
*N/A	DWR1234L799	DECAL,ICON,1" X 2.5",WEATHER/MANUAL/LOOSE GARMENT,L-1234-799	1	\$1.18	\$3.02	
*N/A	DWR1234L810	DECAL,ICON,ELECTRONIC COMPONENTS DISPOSAL,L-1234-810	2	\$1.13	\$2.87	
*N/A	DWR1234L811	DECAL,ICON,DO NOT ADJUST ANTI-TIP,1.25" X 0.75",JAZZYSELECT,L-1234-811	2	\$1.1	\$2.81	
*N/A	DWR1235L515	DECAL,WARNING,BATTERY WARNINGS,L-1235-515	1	\$1.4	\$3.58	
*N/A	DWR1235L308	DECAL,BATTERY CONNECTION,JAZZY SELECT GT,L-1235-308	1	\$1.75	\$4.45	
*N/A	DWR1235L468	DECAL,ICON,FREEWHEEL,UP-NEUTRAL/DOWN-DRIVE,L-1235-468	1	\$1.18	\$3.01	
*N/A	DWR1235L469	DECAL,CONTROLLER HARNESS,SELECT ELITE CONFIGURATION,L-1235-469	1	N/A	N/A	
*N/A	DWR1235L677	DECAL,PROGRAM REVISION,ELEASMB7082,PROGRAM# DWR1111H524,L-1235-677	1	N/A	N/A	
*N/A	DWR1235L541	DECAL,NAME,SELECT ELITE,L-1235-541	2	\$3.35	\$8.54	
*N/A	DWR1235L542	DECAL,DATA PLATE,SELECT ELITE,L-1235-542	1	N/A	N/A	

## Jazzy Elite ES

REF #	PART #	DESCRIPTION	QTY	Dealer \$	MSRP	11i
*N/A	DECASMB7120009	DECAL,ASSY,JAZZY ELITE ES	1	N/A	N/A	
*N/A	DECSERN1035	DECAL,SERIAL NUMBER,2" X 1.25",BARCODE,MADE IN CHINA,W/PRIDE LOGO	1	N/A	N/A	
*N/A	DWR1234L004	DECAL,ICON,MAXIMUM WEIGHT CAPACITY,300LBS/135 KG,L-1234-004	1	\$1.28	\$3.26	
*N/A	DWR1234L799	DECAL,ICON,1" X 2.5",WEATHER/MANUAL/LOOSE GARMENT,L-1234-799	1	\$1.18	\$3.02	
*N/A	DWR1234L810	DECAL,ICON,ELECTRONIC COMPONENTS DISPOSAL,L-1234-810	2	\$1.13	\$2.87	
*N/A	DWR1234L811	DECAL,ICON,DO NOT ADJUST ANTI-TIP,1.25" X 0.75",JAZZYSELECT,L-1234-811	2	\$1.1	\$2.81	
*N/A	DWR1235L308	DECAL,BATTERY CONNECTION,JAZZY SELECT GT,L-1235-308	1	\$1.75	\$4.45	
*N/A	DWR1235L468	DECAL,ICON,FREEWHEEL,UP-NEUTRAL/DOWN-DRIVE,L-1235-468	1	\$1.18	\$3.01	
*N/A	DWR1235L900	DECAL,CONTROLLER,WIRING DIAGRAM,GEN 2,L-1235-900	1	N/A	N/A	
*N/A	DWR1235L515	DECAL,WARNING,BATTERY WARNINGS,L-1235-515	1	\$1.4	\$3.58	
*N/A	DWR1235L520	DECAL,CAUTION,EXTENSION CORD/GROUNDING PRONG,L-1235-520	1	\$1.4	\$3.58	
*N/A	DWR1235L521	DECAL,WARNING,CONTROLLER CORD PLACEMENT,L-1235-521	1	\$1.29	\$3.3	
*N/A	DWR1235L677	DECAL,PROGRAM REVISION,ELEASMB7082,PROGRAM# DWR1111H524,L-1235-677	1	N/A	N/A	
*N/A	DWR1235L841	DECAL,JAZZY LOGO,L-1235-841	1	\$1.35	\$3.44	
*N/A	DEC8110015	DECAL,NAME,JAZZY ELITE ES,DEC8110015	2	N/A	N/A	
*N/A	DEC8110020	DECAL,DATA PLATE,JAZZY ELITE ES	1	N/A	N/A	
*N/A	DEC8120003	DECAL,DATA PLATE,JAZZY ELITE ES,FRENCH,DEC8120003	1	N/A	N/A	

### Notes :

\*N/A Not applicable.

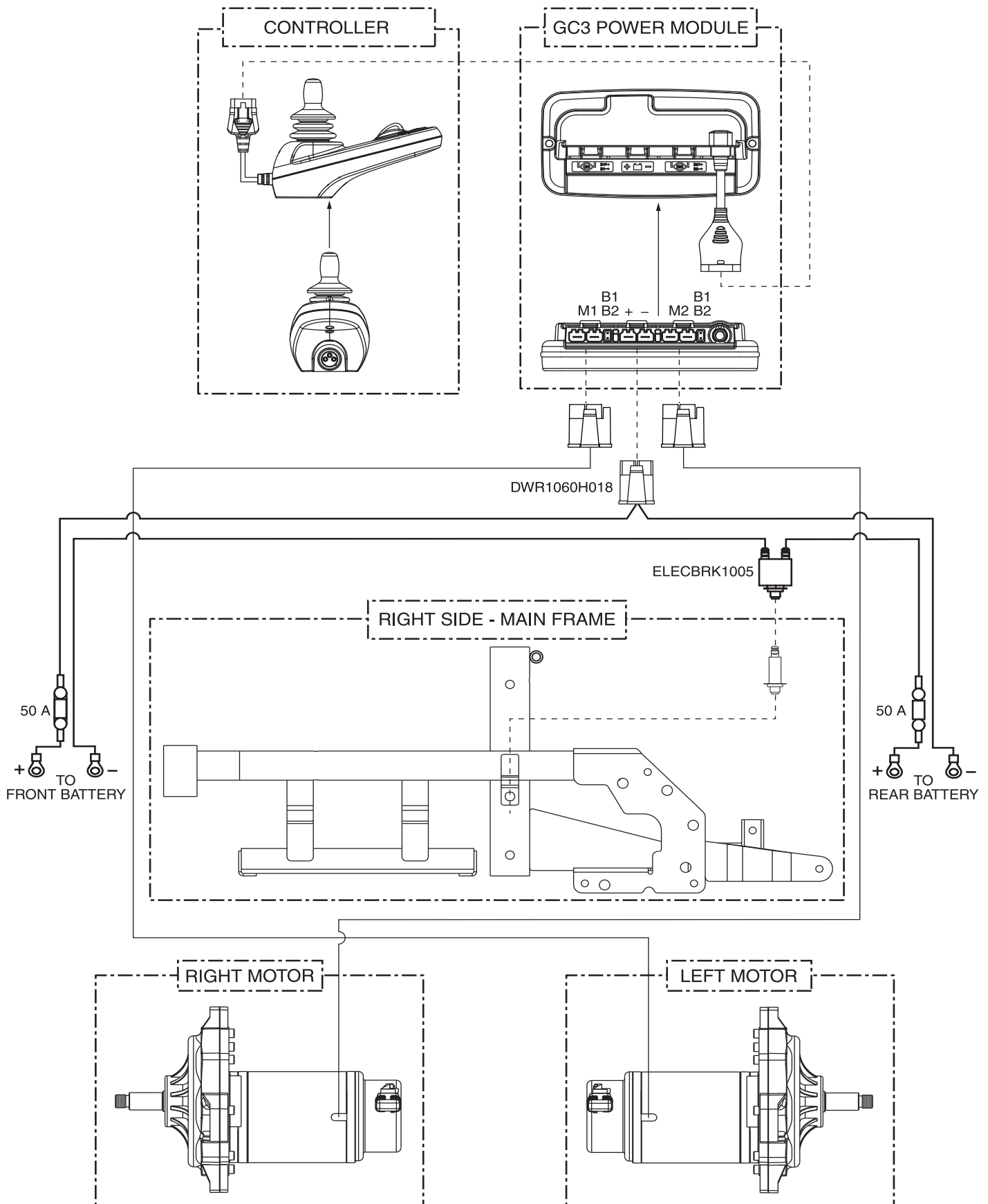
# XI. Decal Packages

## Jazzy Elite ES-1

REF #	PART #	DESCRIPTION	QTY	Dealer \$	MSRP	11i
*N/A	DECASMB7120009	DECAL,ASSY,JAZZY ELITE ES	1	N/A	N/A	
*N/A	DECSERN1035	DECAL,SERIAL NUMBER,2" X 1.25",BARCODE,MADE IN CHINA,W/PRIDE LOGO	1	N/A	N/A	
*N/A	DWR1234L004	DECAL,ICON,MAXIMUM WEIGHT CAPACITY,300LBS/135 KG,L-1234-004	1	\$1.28	\$3.26	
*N/A	DWR1234L799	DECAL,ICON,1" X 2.5",WEATHER/MANUAL/LOOSE GARMENT,L-1234-799	1	\$1.18	\$3.02	
*N/A	DWR1234L810	DECAL,ICON,ELECTRONIC COMPONENTS DISPOSAL,L-1234-810	2	\$1.13	\$2.87	
*N/A	DWR1234L811	DECAL,ICON,DO NOT ADJUST ANTI-TIP,1.25" X 0.75",JAZZYSELECT,L-1234-811	2	\$1.1	\$2.81	
*N/A	DWR1235L308	DECAL,BATTERY CONNECTION,JAZZY SELECT GT,L-1235-308	1	\$1.75	\$4.45	
*N/A	DWR1235L468	DECAL,ICON,FREEWHEEL,UP-NEUTRAL/DOWN-DRIVE,L-1235-468	1	\$1.18	\$3.01	
*N/A	DWR1235L900	DECAL,CONTROLLER,WIRING DIAGRAM,GEN 2,L-1235-900	1	N/A	N/A	
*N/A	DWR1235L515	DECAL,WARNING,BATTERY WARNINGS,L-1235-515	1	\$1.4	\$3.58	
*N/A	DWR1235L520	DECAL,CAUTION,EXTENSION CORD/GROUNDING PRONG,L-1235-520	1	\$1.4	\$3.58	
*N/A	DWR1235L521	DECAL,WARNING,CONTROLLER CORD PLACEMENT,L-1235-521	1	\$1.29	\$3.3	
*N/A	DWR1235L677	DECAL,PROGRAM REVISION,ELEASMB7082,PROGRAM# DWR1111H524,L-1235-677	1	N/A	N/A	
*N/A	DWR1235L841	DECAL,JAZZY LOGO,L-1235-841	1	\$1.35	\$3.44	
*N/A	DEC8110015	DECAL,NAME,JAZZY ELITE ES,DEC8110015	2	N/A	N/A	
*N/A	DEC8110020	DECAL,DATA PLATE,JAZZY ELITE ES	1	N/A	N/A	
*N/A	DEC8120003	DECAL,DATA PLATE,JAZZY ELITE ES,FRENCH,DEC8120003	1	N/A	N/A	

### Notes :

\*N/A Not applicable.





# Pride<sup>®</sup>

*Mobility Products Corp.*

*www.pridemobility.com*

**Pride<sup>®</sup> Mobility Products Corporation**

182 Susquehanna Avenue  
Exeter, PA 18643  
USA

**Pride<sup>®</sup> Mobility Products Company**

5095 South Service Road  
Beamsville, ON L0R 1B3  
Canada

**Pride<sup>®</sup> Mobility Products Ltd.**

32 Wedgwood Road  
Bicester, Oxfordshire OX26 4UL  
UK

**Pride<sup>®</sup> Mobility Products Australia Pty. Ltd.**

20-24 Apollo Drive  
Hallam, Victoria 3803  
Australia

**Pride<sup>®</sup> Mobility Products New Zealand Ltd.**

38 Lansford Crescent  
Avondale  
Auckland, New Zealand 1007

**Pride<sup>®</sup> Mobility Products Italia S.r.l.**

Via del Progrosso - ang. Via del Lavoro  
Loc. Prato della Corte  
00065 - Fiano Romano (RM)

**Pride<sup>®</sup> Mobility Products Europe B.V.  
(Authorised EU Representative)**

De Zwaan 3  
1601 MS Enkhuizen  
The Netherlands

**Pride<sup>®</sup> Mobility Products Spain**

Calle Velazquez 80 6D  
28001 Madrid  
Spain

**Pride<sup>®</sup> Mobility Products France**

26 rue Monseigneur Ancel  
69 800 Saint-Priest