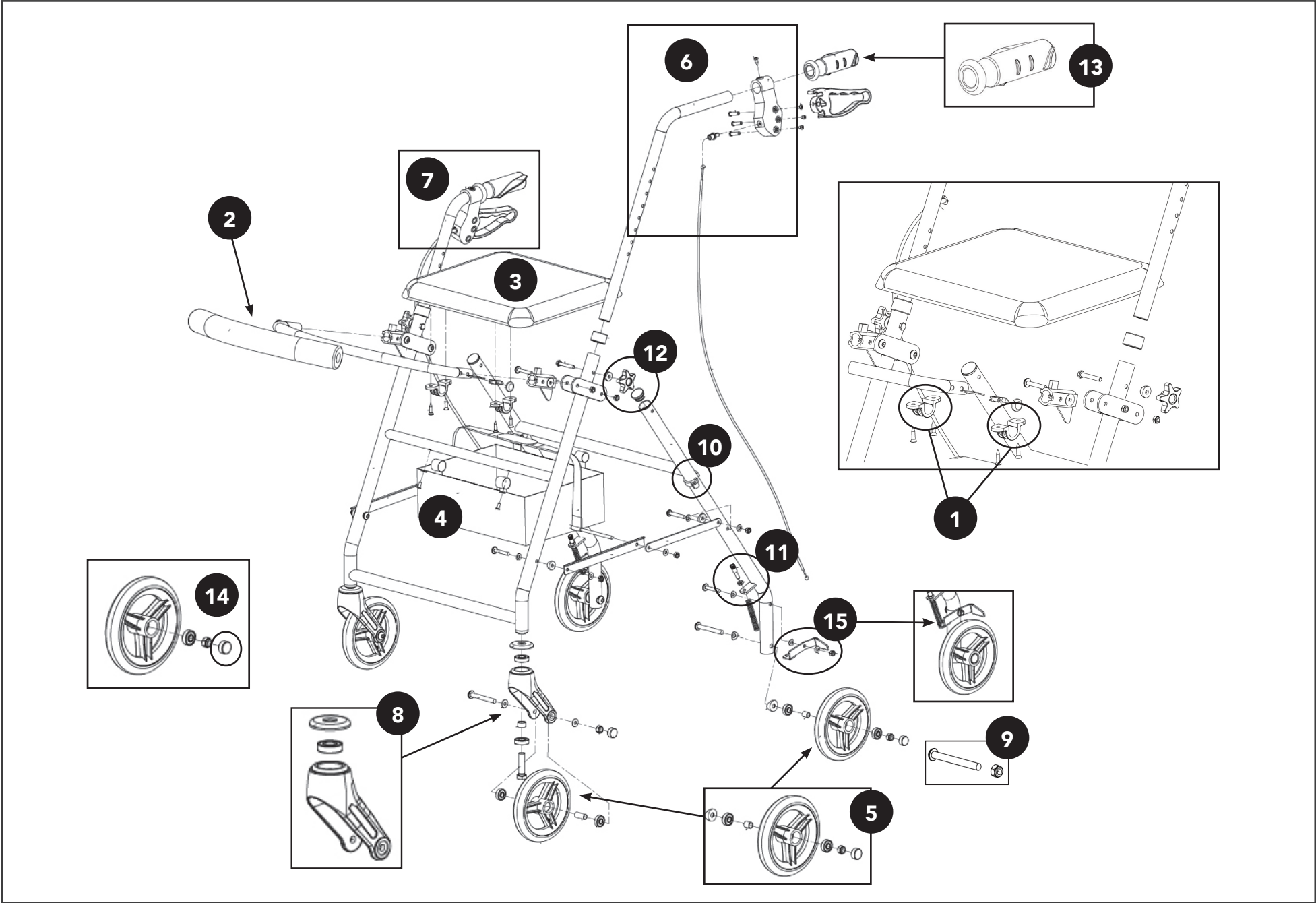


# 8" BARIATRIC ROLLATOR



# 8" BARIATRIC ROLLATOR

| Fig. | Description   | MH Part No. |
|------|---|-------------|
| 1    | ProBasics 8" Alum HD Rollator Seat Clips and Screws   | X1RLAB8MH01 |
| 2    | ProBasics 8" Alum HD Rollator Backrest, Black (Hardware Not Included)                           | X1RLAB8MH02 |
| 3    | ProBasics 8" Alum HD Rollator Replacement Seat  | X1RLAB8MH03 |
| 4    | ProBasics 8" Alum HD Rollator Replacement Pouch   | X1RLAB8MH04 |
| 5    | ProBasics 8" Alum HD Rollator Caster w/Bearing (Front or Rear)                                  | X1RLAB8MH05 |
| 6    | ProBasics 8" Alum HD Rollator Left Hand Brake Assembly (Includes brake spring & wheel contact)  | X1RLAB8MH06 |
| 7    | ProBasics 8" Alum HD Rollator Right Hand Brake Assembly (Includes brake spring & wheel contact) | X1RLAB8MH07 |
|      |   |             |
| 9    | ProBasics 8" Alum HD Rollator Caster Axle Bolt w/Nut (Front or Rear)                            | X1RLAB8MH09 |
| 10   | Probasics Brake Cable Ring  | X1RLMH01    |
| 11   | Probasics Rollator Brake Spring   | X1RLMH02-3  |
| 12   | Probasics Rollator Handle Height Adjustment Knob  | X1RLMH03    |
| 13   | Probasics Rollator Handle Grips, Pair   | X1RLMH04    |
| 14   | Probasics Rollator Caster Cap   | X1RLMH05    |
| 15   | Probasics Rollator Brake Wheel Contact  | X1RLMH06-4  |
| 16   | ProBasics Pivot Bracket/Holder (Detachable Plastic Piece On end of Backrest)                    | X1RLABB01   |
|      |   |             |
|      |   |             |
|      |   |             |
|      |   |             |
|      |   |             |
|      |   |             |
|      |   |             |
|      |   |             |
|      |   |             |
|      |   |             |
|      |   |             |
|      |   |             |
|      |   |             |
|      |   |             |
|      |   |             |
|      |   |             |