

# Wireless 3-in-1 Pain Relief Device

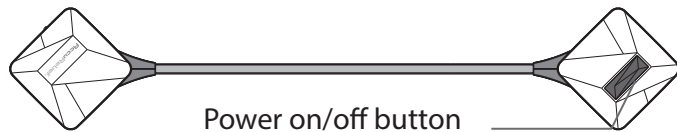
Model ACRL-9100



Ensure that the Bluetooth (4.0) connection is activated on your smartphone or tablet.

Apply pads to normal, healthy, clean and dry skin of adult patients because it may otherwise disrupt the healing process. If you experience any skin irritation or redness after a session, do not continue stimulation in that area of the skin.

## KNOW YOUR DEVICE



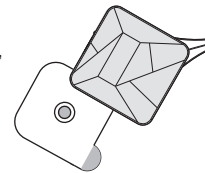
### 1 TURN ON THE BLUETOOTH

When you open the Wireless 3-in-1 app in your mobile phone, the app asks you to turn on Bluetooth. Please accept.

- For iOS: Press settings to turn on Bluetooth.
- For Android: Press "allow" to turn on Bluetooth.

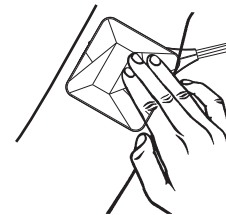
### 2 CONNECT THE GEL PADS TO THE DEVICE

Each gel pad is pre-fixed with a stud to connect to the back of the device, and is protected by a transparent film. Attach the gel pads to the back of the device, pressing them in place.



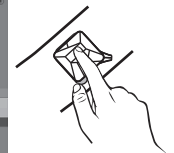
### 3 PLACE THE GEL PADS ON THE SKIN

Clip excess hair from the area to be treated. Wash with soap and water, and dry completely. Remove the protective film layer and apply the gel pad to the skin. Press firmly to ensure adhesion. See the Recommended Gel Pad Positions on reverse page.



### 4 TURN ON THE ACRL-9100 UNIT AND START A SESSION THROUGH THE USE OF THE DEVICE APPLICATION

Press the on/off button so that the appliance is put on standby mode (Continuous green light : Standby mode, ready for the session). The App will detect the device when it is switched on. In case of inactivity for more than 5 min, the device switches off. Simply press the on/off button again to reenter standby mode. Press the name of the device on your app screen to enter main menu.



### 5 SELECT THE AREA TO BE TREATED

To start a new session, select a program (TENS, EMS or Massage) and using the labels on the front and back of the body image select the area you wish to treat.



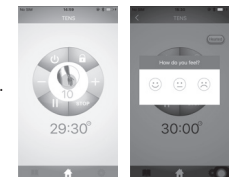
### 6 ESTIMATE THE INTENSITY OF PAIN (IN TENS MODE)

On a scale of 1 to 10, evaluate the intensity of the pain. For no pain press 0, for extremely intense pain press 10.



### 7 SELECT AND START A SESSION.

Starting a session : Click on "+" button to begin increasing intensity. When your session is complete, estimate your satisfaction level. The session will be recorded in the History folder of the app. To turn off, press the power button on the app or device. Remove the electrodes from the skin. Remove the device from the electrodes. If the device is idle for more than 5 minutes, it will turn off. Make sure the device is turned off before removing the electrodes.



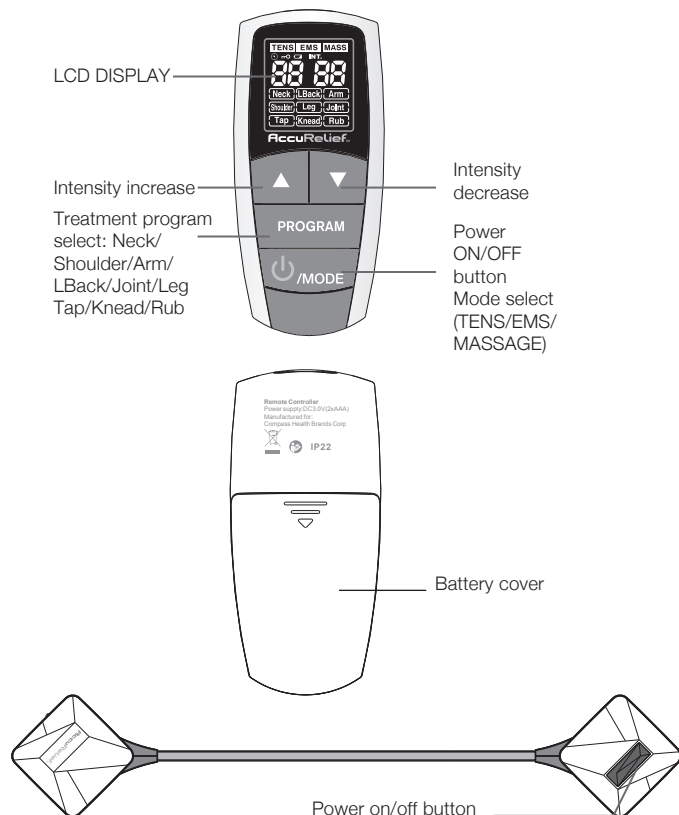
# Wireless 3-in-1 Pain Relief Device

Model ACRL-9100



Apply pads to normal, healthy, clean and dry skin of adult patients because it may otherwise disrupt the healing process. If you experience any skin irritation or redness after a session, do not continue stimulation in that area of the skin.

## KNOW YOUR DEVICE



### 1 INSERT BATTERIES

Two AAA batteries are included. Remove the back cover of remote control by pressing and sliding the cover in the direction of the arrow. Insert batteries as marked in unit. Slide cover back into position.



### 2 CONNECT THE GEL PADS TO THE DEVICE

Each gel pad is pre-fixed with a stud to connect to the back of the device, and is protected by a transparent film. Attach the gel pads to the back of the device, pressing them in place.



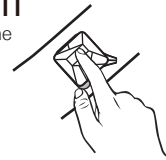
### 3 PLACE THE GEL PADS ON THE SKIN

Clip excess hair from the area to be treated. Wash with soap and water, and dry completely. Remove the protective film layer and apply the gel pad to the skin. Press firmly to ensure adhesion.



### 4 TURN ON THE ACRL-9100 UNIT

Press the power button on the ACRL-9100 unit to turn on. A steady green indicator light will turn on to let you know the unit is powered on and in standby mode.



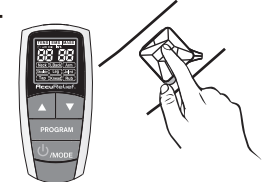
### 5 OPERATING THE ACRL-9100 UNIT

Press the Power/Mode button on the remote to connect to the electrode unit. Press Mode again to switch between TENS, EMS and Massage. Press Program to select treatment area for TENS & EMS or select Massage program. Use the ▲ and ▼ buttons to increase and decrease the intensity of each treatment.



### 6 TURN OFF THE ACRL-9100 UNIT

Hold down the power button on the remote until it turns off. Press the power button on the electrode unit to turn off. Make sure the device is turned off before removing the electrodes.



## Recommended Gel Pad Positions

