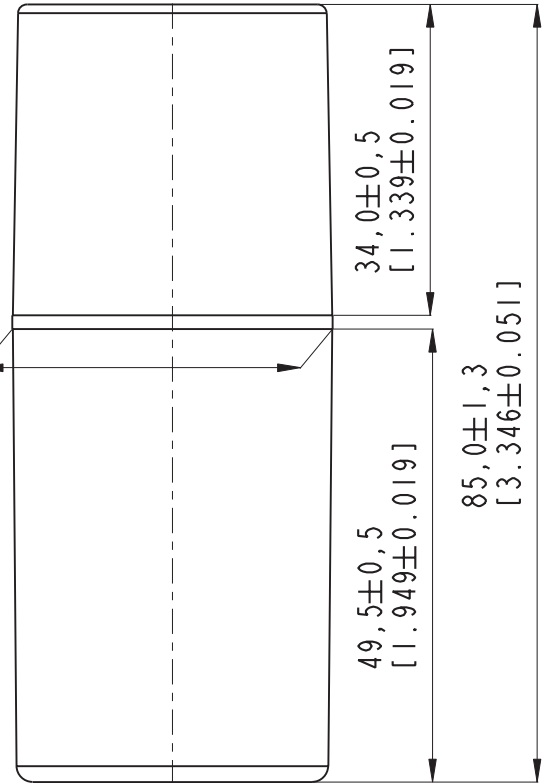
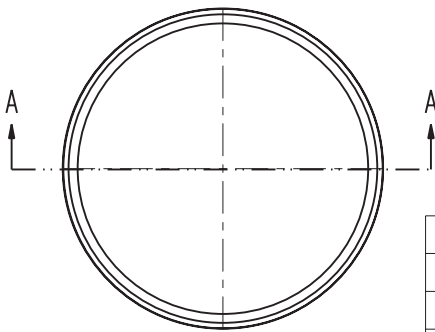


截面 A-A

$\varnothing 35,0 \pm 0,5$
[1.378 ± 0.019]



NOT DRAWN TO SCALE



12	Piston	PE	Natural	300021703001	1
11	Outer Bottle	PP	Color for order form	300021724003	1
10	Anti-siphon Valve	LDPE	Blue	300020118001	1
9	Pump Housing	PP	Color for order form	300020101002	1
8	Pump Rod	POM	Natural	300020117001	1
7	Pump Piston	LDPE	Natural	300020103002	1
6	Collar	PP	Color for order form	300021705001	1
5	Pump Collar	PP	Color for order form	300020106002	1
4	Spring	304	$\varnothing 7.8 * 18.5 * \varnothing 0.7 \text{mm} * 6.5 \text{Circle}$	300020196002	1
3	Retainer	PP	White	300020104001	1
2	Actuator	PP	Color for order form	300021708001	1
1	Overcap	PP	Color for order form	300021707001	1
No.	Component	Material	Specification	Part No.	QTY

	TOLERANCE
0mm - 15mm	± 0.50
15mm - 30mm	± 1.00
30mm - 50mm	± 1.50
50mm - 99mm	± 2.00
ABOVE 99mm	± 2.50
CENTER	± 1.50
ANGLER	± 5.00°

Vision Packaging (Aust.) Pty Limited 16 075 725 576

NAME: 15mL Airless Bottle AVA Snow + APZ Airless Lotion Pump + Overcap

DRAWING ID: 157avasnowbot0015-ZK217 + 157avasnowpump-ZK217

DOSAGE RATE: 0.23 ± 0.03mL

BRIMFUL CAPACITY: 21.2 ± 1.0mL

PART NO.

UNIT:
mm

VISUAL ANGLE



DATE: 15-12-18