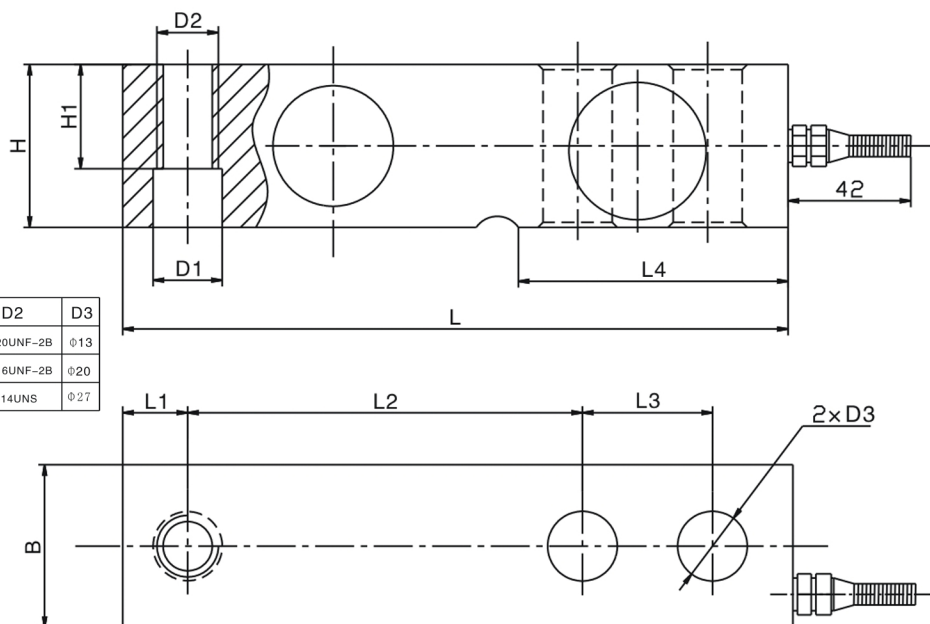
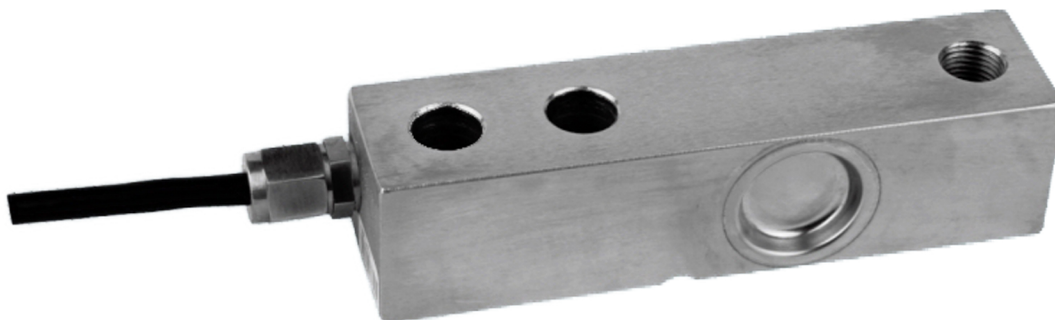
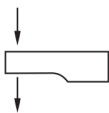


**SB-A Load Cell**
**SB-A**


Rated load (klb)	L	L1	L2	L3	L4	H/B	H1	D1	D2	D3
1, 1.5, 2, 2.5, 4	130	12.7	76.2	25.4	53.5	31.8	15.7	Φ13.5	1/2-20UNF-2B	Φ13
5, 7.5, 10	171.5	19	95.3	38.1	72.5	38.1	26	Φ20	3/4-16UNF-2B	Φ20
15, 20	225.5	25.3	124	50.8	102	50.8	25.4	Φ27	1-14UNS	Φ27



Floor scale, blending scale, platform scale

## TECHNICAL PARAMETER

OAP version 4Wires:Exc+(Blue);Exc-(Black);Sig+(White);Sig-(Red)

Rated capacities(Emax)	250, 500lb 1,1.5,2,2.5,4,5,7.5,10,15,20Klb	Temperature range, compensated	-10°C~+40°C
Sensitivity	3.0±0.003mV/V	Temperature range, operating	-30~+70°C
Accuracy class	III L 5000	Maximum safe overload	150%F.S
		Ultimate overload	200%F.S
Zero balance	± 1%F.S	Excitation,recommended	10~12V DC
TC ZERO	± 0.02%F.S/10°C	Excitation,maximum	15V DC
TC SPAN	± 0.02%F.S/10°C	Protection class	IP67(1klb);IP68(2~4klb)
Input resistance	400±20Ω	Construction	Alloy Steel, Stainless Steel
Output resistance	352±3Ω	Cable	Length: 3m
Insulation resistance	≥5000MΩ		Diameter: Φ 6mm