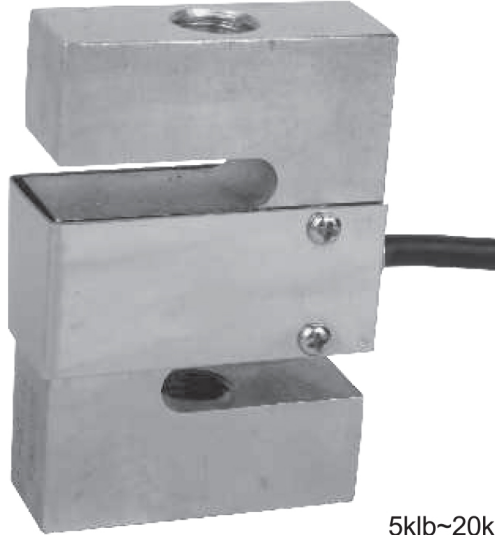




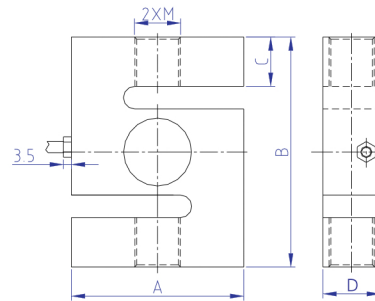
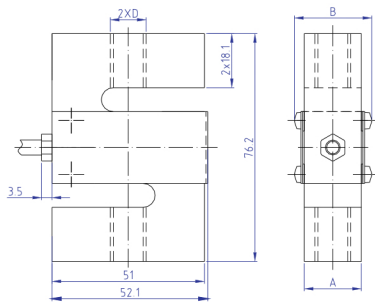
DEF-A Load Cell

DEF-A



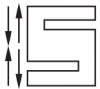
250lb~3klb

5klb~20klb



	A	B	D
250lb~300lb	12.4	19.5	3/8-24 UNF-2B
500lb~1.5klb	19.1	26	1/2-20 UNF-2B
2~3klb	25.4	32.5	1/2-20 UNF-2B

(klb)	A	B	C	D	M
5~7.5	76.2	107.9	25	25.4	3/4-16 UNF-2B
10	88.9	120.7	31	25.4	3/4-16 UNF-2B
20	127	178	38	51	1 1/4 -12UNF-2B



Crane scale, belt scale, blending system

TECHNICAL PARAMETER

OAP version 4Wires:Exc+(Blue);Exc-(Black);Sig+(White);Sig-(Red)

Rated capacities(Emax)	250,300,500,750lb;1,1.5,2,2.5,3,5,7.5,10,20klb	Temperature range, compensated	-10°C~+40°C
Sensitivity	3.0±0.003mV/V	Temperature range, operating	-30~+70°C
Total error	±0.03%F.S	Maximum safe overload	120%F.S
Creep error (30min)	±0.03%F.S	Ultimate overload	150%F.S
Zero balance	±1%F.S	Excitation, recommended	10~12V DC
TC ZERO	±0.03%F.S/10°C	Excitation, maximum	15V DC
TC SPAN	±0.03%F.S/10°C	Protection class	IP65(250lb~3klb);IP68(5~20klb)
Input resistance	400±20Ω	Construction	Alloy Steel Stainless Steel
Output resistance	352±3Ω	Cable	Length:5m
Insulation resistance	≥5000MΩ		Diameter: φ5mm