

# DREAM PING PONG

## INSTALLATION MANUAL

2023-07-05



**CANADA BILLIARD & BOWLING INC.**

4050 Industriel Blvd, Laval, QC, H7L 6C3

450-963-5060

**WWW.CANADABILLIARD.COM**

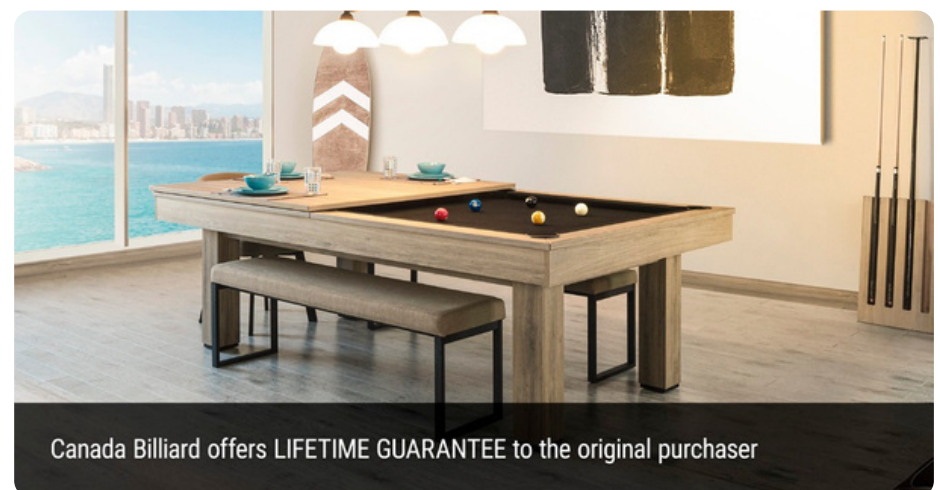


# LIFETIME GUARANTEE

CANADA BILLIARD is pleased to offer an unsurpassed LIFETIME GUARANTEE TO THE ORIGINAL PURCHASER against defects in material and workmanship, provided installation and/or service is performed by an Authorized Dealer or a factory-approved installer. Cloth, pockets and rail cushions are not covered under this guarantee. CANADA BILLIARD warrants that those specific parts are to be free from defects at date of installation.

ALL CLAIMS MUST BE MADE THROUGH AN AUTHORIZED DEALER OR REPRESENTATIVE. Parts returned for warranty service are to be shipped «prepaid». Those parts found to be defective will be repaired or replaced by CANADA BILLIARD at its sole discretion, and returned «prepaid» by conventional surface freight carrier. Any costs or charges required to disassemble, prepare for return and reassemble will be the sole responsibility of the owner. This guarantee does not imply the replacement of the entire pool table but does cover the replacement or repair of such parts that may prove to be defective.

Replacement or repair of defective parts shall constitute complete fulfillment of all obligations of CANADA BILLIARD with respect to product guarantee. CANADA BILLIARD shall under no circumstances incur liabilities for any consequential damages arising out of any condition of the pool table, including but not limited to, damages arising from the use or loss of use of the product.



There are no warranties which extend beyond the description on the face hereof. No other express or implied warranties of merchantability or fitness for particular use, whether oral or written, shall apply to the product. CANADA BILLIARD neither assumes nor authorizes, any person to assume on CANADA BILLIARD's behalf, any other obligation or liability in connection with the product.

This guarantee does not apply to damage resulting from transit, moving, abuse, misuse, accident, alteration, neglect, climatic conditions, normal wear and tear, fire, flood, earthquake or any other natural calamity. Billiard tables used in an institutional or commercial application are not covered by this guarantee.

CANADA BILLIARD reserves the right to improve any product through changes in design or materials without obligation to incorporate such changes in products of prior manufacture. This warranty is personal and non-transferable to subsequent owners of the table. CANADA BILLIARD's obligation hereunder is void if the table is not installed and serviced by an authorized CANADA BILLIARD's Dealer or Representative.

# DREAM PING PONG

BAG#	QTY	DESCRIPTION
<b>#1 Frame / Legs</b>		
	16	Threaded rods 3/8"-16 x 4 1/2"
	16	Écrous de bande 16-02
	20	Flat washers 7/16"
	16	Hexagon nuts 3/8"-16
	16	Dowel pins 5/8" x 2"
	44	Wood screws # 8 x 1 1/4" (round head washer)
	4	Hexagon bolts 3/8"-16 x 1 3/4"
<b>#2 Miscellaneous</b>		
	2	Chromes poles
	2	Net rods
	1	Ping pong net (26-NX2802 with 2 PREINSTALLED fixation rings 8mm gauge 23)
	2	Winged nut 3/8*16 x 1 1/2" (#SPA565028)
	1	Assembly guide (at packaging)

50-PPNTCH



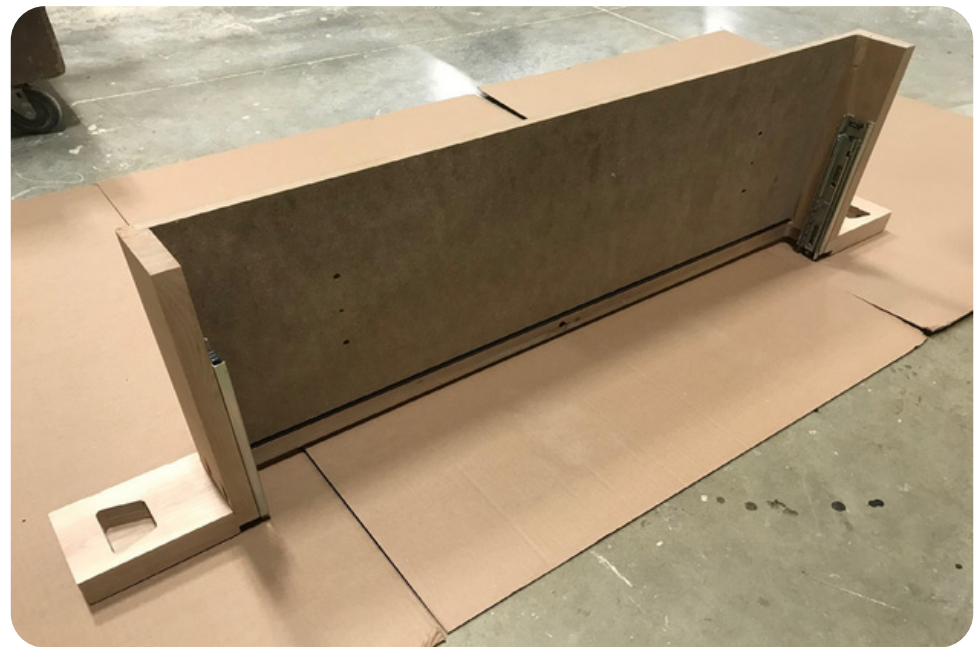
**1** According to the picture above, place the hardware on a clean surface.



**2** Unwrap legs and unscrews leg levellers for about 1/2".



**3** Arrange the parts of the frame on a clean surface.



**4** When installing a ping pong with a drawer, replace one short frame with this one made for receiving the drawer.



**5** Install the 3/8"-16 full threaded rods and 5/16" x 2" dowel pins into the legs.



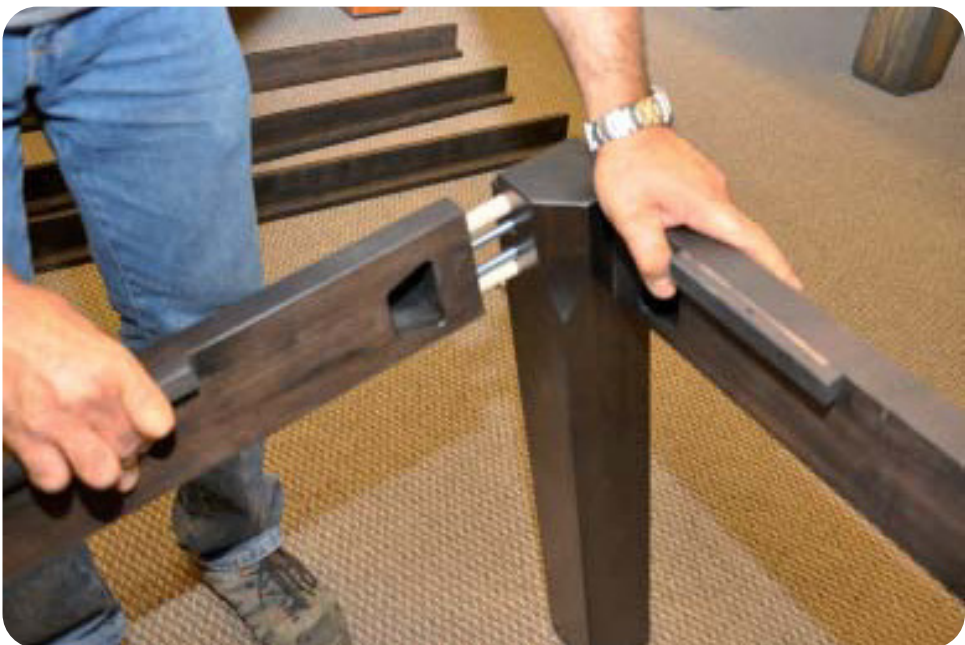
**6** Fasten the end sills to the legs with 7/16" flat washers, 3/8"-16 hexagon nuts. AND 16-02 "T" NUTS.



**7** Tighten all the nuts.



**8** Fasten the second end sill.



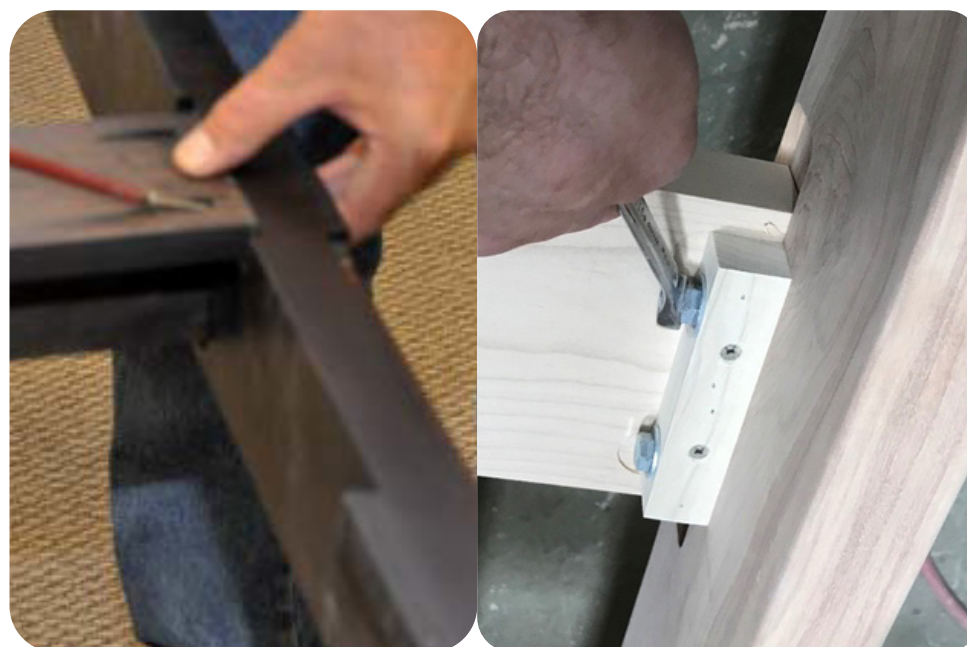
**9** Fasten the first side sill to the legs.



**10** Fasten the second side sill to the legs.



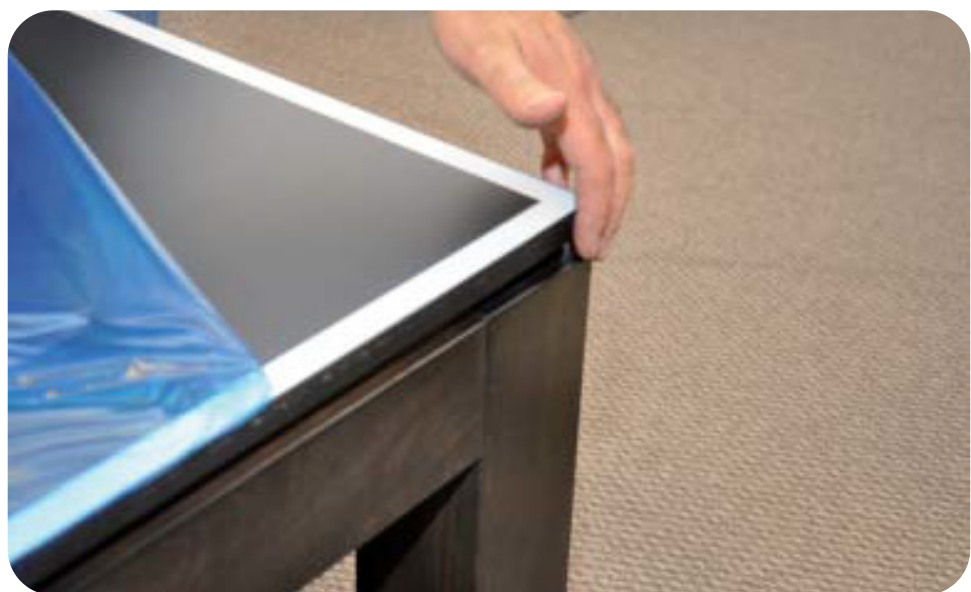
**11** Fasten the second assembling legs to the side sills.



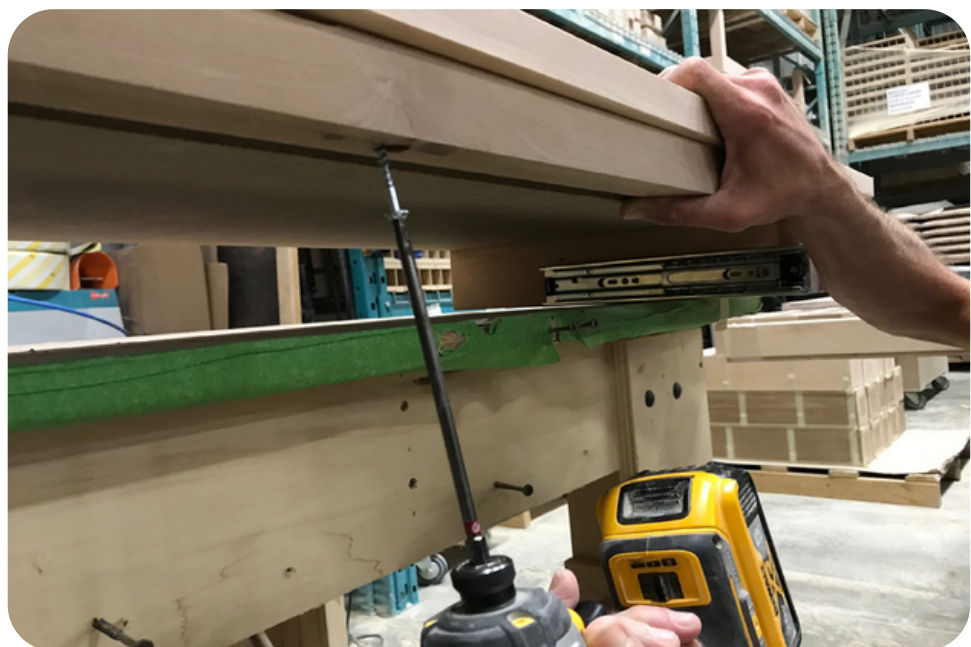
**12** Screw the "T" shaped crossmembers with #8 1 1/4" wood screws and with 3/8"-16 x 1 3/4" hexagonal bolts and 7/16" flat washers fix the net crossmember



**13** Slide both chrome poles in place into the net crossmember underneath the metal plate. **TO FACILITATE THE INSTALLATION OF THE CHROME POLES (OPERATION 13) BE SURE THAT THE POINTED SURFACES ARE LEVELED.**



**15** Place and center the playing surface on the frame.



**17** If you purchase a ping pong with a drawer, complete operation 16 by fixing the surface through the drawers frame with wood screws #8 x 1 1/4" round headed **WASHER**.



**14** Loosely screw the 3/8"-16 x 1 1/2" winged nut underneath the net crossmember. This nut will allow you to tighten the net or completely remove the chrome poles when using your table as a dining table.



**16** Attach the frame to the playing surface and cross members with wood screws #8 x 1 1/4" **ROUND HEAD WASHER. IT IS VERY IMPORTANT TO USE THOSE SCREWS TO PREVENT DAMAGE TO THE SURFACE TOP..**



**18** Put the drawer back in place.



**19** Slide the rods at each end of the net.

- 1) Into the ring.
- 2) Into the net itself.

for each of the following steps, it will be easier to proceed simultaneously on each end of the net with help.



**20** Insert the angular end of the rod into the holes on the bottom of the chrome poles.



**21** Insert the upper part of the rod into the upper part of the chrome pole,



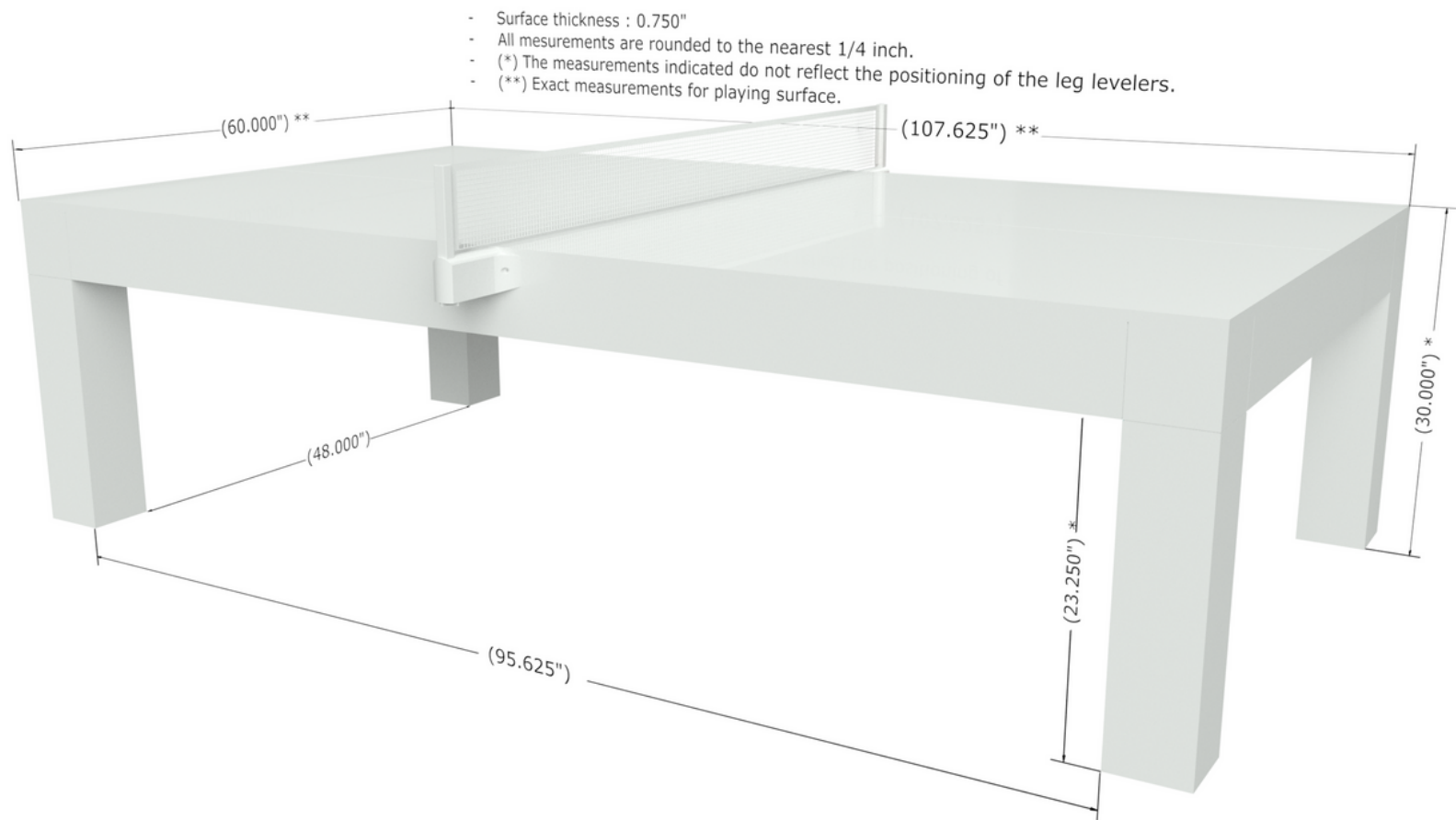
**22** Tighten the net by pulling the chrome pole from the pingpong table..



**23** Tighten the chrome pole with the winged nut underneath the net crossmember.



**24** Your installation is completed.



**YOU ARE NOW READY  
TO PLAY YOUR FIRST GAME OF PINGPONG  
ON YOUR MAGNIFICENT PING PONG TABLE  
FROM CANADA BILLIARD !**

**CONGRATULATIONS !**

**CANADA BILLIARD & BOWLING INC.**

4050 Industriel blvd, Laval, QC, H7L 6C3

450-963-5060

**WWW.CANADABILLIARD.COM**

