

# PRODUCT DATASHEET

## HE 14 W/840

LUMILUX T5 HE | Tubular fluorescent lamps 16 mm, high efficiency, with G5 base



---

### AREAS OF APPLICATION

- Public buildings
- Offices
- Shops
- Supermarkets and department stores
- Industry
- Outdoor applications only in suitable luminaires

---

### PRODUCT BENEFITS

- Good economy and efficiency
- Up to 20 % more economical than LUMILUX T8
- Up to 50 % smaller volume than comparable T8 lamps

---

### PRODUCT FEATURES

- Luminous efficacy: up to 104 lm/W
- Very good lumen maintenance: 90 % throughout the service lifetime of the lamp
- Long average lifetime: up to 24,000 h (with QUICKTRONIC ECG)
- Good color rendering group: 1B ( $R_a$ : 80...89)
- Dimmable



## TECHNICAL DATA

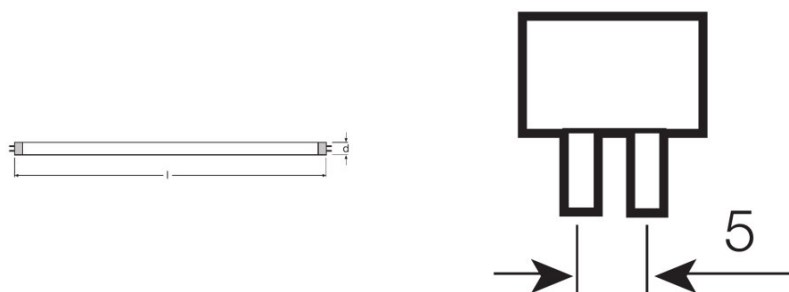
### Electrical data

Nominal voltage	220 V
Nominal wattage	14.00 W
Rated lamp efficacy (HF data 25 °C)	86 lm/W
Rated wattage	14.00 W

### Photometrical data

Color rendering index Ra	≥80
Rated luminous flux	1200 lm
Luminous flux at 25 °C	1200 lm
Luminous flux at 35 °C	1350 lm
Light color	4000
Rated color temperature	4000 K
Nominal luminous flux	1200 lm
Light color (designation)	LUMILUX Cool White
Rated LLMF at 2,000 h	0.95
Rated LLMF at 4,000 h	0.93
Rated LLMF at 6,000 h	0.92
Rated LLMF at 8,000 h	0.90
Rated LLMF at 12,000 h	0.90
Rated LLMF at 16,000 h	0.90
Rated LLMF at 20,000 h	0.89
Color temperature	4000 K
Luminous flux	1200 lm
Color rendering index Ra	≥80

### Dimensions & weight



Tube diameter	16 mm
---------------	-------

<b>Length</b>	549.0 mm
<b>Length with base excl. base pins/connection</b>	549.00 mm
<b>Diameter</b>	16.0 mm
<b>Maximum diameter</b>	16.0 mm

Temperatures & operating conditions

<b>Rated ambient temp.w.max.luminous flux</b>	35.0 °C
---	---------

Lifespan

<b>Service life</b>	19000 h <sup>1)</sup>
<b>Lifespan</b>	24000 h <sup>1)</sup>
<b>Rated lamp survival factor at 2,000 h</b>	0.99
<b>Rated lamp survival factor at 4,000 h</b>	0.99
<b>Rated lamp survival factor at 6,000 h</b>	0.99
<b>Rated lamp survival factor at 8,000 h</b>	0.99
<b>Rated lamp survival factor at 12,000 h</b>	0.99
<b>Rated lamp survival factor at 16,000 h</b>	0.97
<b>Rated lamp survival factor at 20,000 h</b>	0.85
<b>Operation mode LLMF/LSF</b>	HF
<b>Rated lamp life time</b>	24000 h
<b>Nominal lamp life time</b>	24000 h

<sup>1)</sup> With preheat ECG

Additional product data

<b>Base (standard designation)</b>	G5
<b>Mercury content</b>	1.9 mg
<b>Show WEEE picto</b>	Yes
<b>Product remark</b>	Suitable for ECG operation only/Lamp designed for internal luminaire temperatures of 30...40 °C; optimum luminous flux achieved at 35 °C

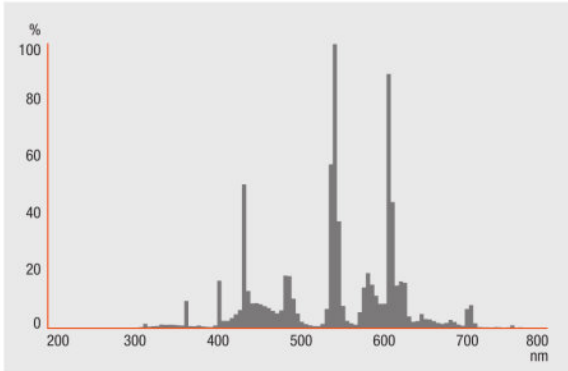
Capabilities

<b>Dimmable</b>	Yes
<b>Suitable for indoor</b>	Yes

Certificates & standards

<b>Energy efficiency class</b>	A+
<b>Energy efficiency class</b>	A+
<b>Energy consumption</b>	16 kWh/1000h

Light Distribution



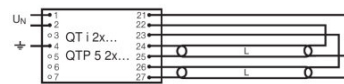
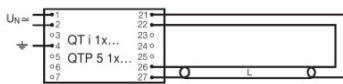
Spectral power distribution

SYSTEM GUARANTEE

- OSRAM System+ Guarantee in combination with OSRAM ECGs

SAFETY ADVICE

In case of lamp breakage: [www.ledvance.com/brokenlamp](http://www.ledvance.com/brokenlamp)



Circuit diagram

Circuit diagram

LOGISTICAL DATA

Product code	Product description	Packaging unit (Pieces/Unit)	Dimensions (length x width x height)	Volume	Gross weight
4050300464688	HE 14 W/840	Shipping carton box 40	598 mm x 95 mm x 198 mm	11.25 dm <sup>3</sup>	2580.00 g
4050300591384	HE 14 W/840	Shipping carton box 20	587 mm x 90 mm x 129 mm	6.82 dm <sup>3</sup>	1503.00 g

The mentioned product code describes the smallest quantity unit which can be ordered. One shipping unit can contain one or more single products. When placing an order, for the quantity please enter single or multiples of a shipping unit.

---

#### REFERENCES / LINKS

For more information on the system guarantee and the terms and conditions of the guarantee visit

▶ [www.ledvance.com/system-guarantee](http://www.ledvance.com/system-guarantee)

---

#### DISCLAIMER

Subject to change without notice. Errors and omission excepted. Always make sure to use the most recent release.

## LUMILUX T5 HE | Tubular fluorescent lamps 16 mm, high efficiency, with G5 base

Product name	Product name ECG	EAN	Nominal current	Nominal wattage + Power loss	Luminous flux at 35 °C	Number of lighting outlets	EEL – Energy Label
HE 14 W/840	QT-ECO 1x4-16/220-240 L		0.10 A	15.00 W	1150 lm	1	A2
	QT-ECO 1x4-16/220-240 S		0.10 A	15.00 W	1150 lm	1	A2
	QT-FIT 5 1x14-35		0.08 A	16.00 W	1200 lm	1	
	QT-FIT 5 2x14-35		0.14 A	32.00 W	1200 lm	2	
	QT-FIT 5 3x14, 4x14		0.28 A	63.00 W	1200 lm	4	
	QTi 1x14/24/21/39 GII		0.08 A	16.00 W	1200 lm	1	
	QTi 1x14/24 DIM		0.07 A	15.40 W	1200 lm	1	
	QTi 1x28/54/35/49 GII		0.08 A	16.00 W	1275 lm	1	
	QTi 1x35/49/80 GII		0.08 A	16.00 W	1275 lm	1	
	QTi 2x14/24/21/39 GII		0.15 A	31.00 W	1200 lm	2	
	QTi 2x14/24 DIM		0.14 A	30.60 W	1200 lm	2	
	QTi 2x28/54/35/49 GII		0.15 A	32.00 W	1275 lm	2	
	QTi 2x35/49/80 GII		0.18 A	34.00 W	1250 lm	2	
	QTi 3x14/24 DIM		0.20 A	45.30 W	1200 lm	3	
	QTi 4x14/24 DIM		0.27 A	60.40 W	1200 lm	4	
	QTi DALI 1x14/24 DIM		0.07 A	15.40 W	1200 lm	1	
	QTi DALI 2x14/24 DIM		0.14 A	30.60 W	1200 lm	2	
	QTi DALI 3x14/24 DIM		0.20 A	45.30 W	1200 lm	3	
	QTi DALI 4x14/24 DIM		0.27 A	60.40 W	1200 lm	4	
	QTP5 1x14-35		0.08 A	16.00 W	1200 lm	1	
	QTP5 2x14-35		0.14 A	30.00 W	1200 lm	2	
	QTP5 3x14, 4x14		0.28 A	48.00 W	1350 lm	3	
	QTP5 3x14, 4x14		0.22 A	63.00 W	1350 lm	4	

Product name	Product name ECG	EAN	Luminous flux at 25 °C
HE 14 W/840	QT-ECO 1x4-16/220-240 L		
	QT-ECO 1x4-16/220-240 S		
	QT-FIT 5 1x14-35		
	QT-FIT 5 2x14-35		
	QT-FIT 5 3x14, 4x14		
	QTi 1x14/24/21/39 GII		
	QTi 1x14/24 DIM		
	QTi 1x28/54/35/49 GII		
	QTi 1x35/49/80 GII		
	QTi 2x14/24/21/39 GII		
	QTi 2x14/24 DIM		
	QTi 2x28/54/35/49 GII		
	QTi 2x35/49/80 GII		
	QTi 3x14/24 DIM		
	QTi 4x14/24 DIM		
	QTi DALI 1x14/24 DIM		
	QTi DALI 2x14/24 DIM		
	QTi DALI 3x14/24 DIM		
	QTi DALI 4x14/24 DIM		
	QTP5 1x14-35		
	QTP5 2x14-35		
	QTP5 3x14, 4x14		1200 lm
	QTP5 3x14, 4x14		1200 lm