

TESTED

## PURE MAGIC



Deluxe Materials has long been at the forefront of model adhesives, yet it still continues to devise innovative new products. **GEORGE DENT** puts its latest offerings to the test.

**D**eluxe Materials' Plastic Magic and Rokat brands of glue will be familiar to most *Model Rail* readers, as will its many scenic products, such as Scenic Snow and Scenic Rust. Never one to rest on his laurels, DM's John Bristow is constantly looking at ways to improve the existing products and to identify areas of the hobby where modellers may need assistance.

As a result, a number of exciting new products are being launched in 2012, along with a tweak to the formula of DM's Plastic Magic - one of the leading liquid

plastic cements. Each of these products has been trialled in a number of ways for this issue's Workbench Test, with each being used as per the supplied instructions as well as operating outside the 'comfort zone'. The results are described below, along with some hints and tips on how to get the best out of the products.

The Deluxe range is available from all good model shops, including Gaugemaster and Hatton's - and for this month only, we're happy to offer a number of DM glues and scenics as part of a great-value subscription offer (see page 30 for more details).

**PRODUCT**  
Plastic Magic, 50ml jar, £4.20; Rokat Plastic Glue, 30ml jar, £4.95; Perfect Plastic Putty, 40ml tube, £4.50; Track Magic, 50ml bottle, £7.25

**AVAILABILITY**  
Gaugemaster.  
• Tel: 01903 884488  
• Web: [www.gaugemaster.com](http://www.gaugemaster.com)

**DIFFICULTY**

**TOOLS NEEDED**  
• Knife  
• Files  
• Paintbrush  
• Tweezers

### TRACK MAGIC

This specially formulated cleaning fluid is designed for use on rails, wheels, power contacts, switches and any other metal surface used to conduct electrical current. By dissolving areas of dirt and oil contamination, the surface is left spotlessly clean - and as the fluid evaporates, it leaves behind a conductive film that offers invisible protection from corrosion and mechanical wear.

Each pack contains a 50ml bottle of Track Magic along with a handful of accessories: a microbrush for wheel and contact cleaning, a sponge-tipped spatula for rail application and plastic cup for decanting fluid, a pad to apply to rail surfaces, and a dispensing pipette and beaker.

Although Track Magic won't shift thick deposits of dirt, it's ideal for use as a regular maintenance tool, following an occasional deep clean with a track rubber. Indeed, running a regular trip around my layout with a track-cleaning car, with the sponge impregnated with Track Magic, kept the rails visibly clean and performance optimal.

Under test, it was also found to be excellent for cleaning wheel rims of freshly applied paint during weathering, and for renovating old switches, point blades (and contacts) and motors. The fluid is also completely safe for use on painted surfaces, so long as the paint is fully dry, and it's compatible with all plastic and foam materials. It is equally suited to both digital and analogue control systems.

Supplied with a microbrush and sponge applicator, Track Magic promises to keep your track and wheels in tip-top condition.

### PLASTIC MAGIC

Plastic Magic has been on the market for some time, but it's now been re-launched with a new and improved formula, making it even more effective and versatile. Designed for use solely on plastics, the aggressive liquid solvent works to chemically weld the parts together. Accordingly, it must be used with care, preferably in a well-ventilated area and away from any sources of ignition.

Used sparingly, the liquid is powerful enough to bond virtually all types of plastics found in kits (including styrene, butyrate and ABS) and building accessories, such as plastic card and strip and section from the likes of Slater's, Evergreen and Plastruct. What's more, even the notoriously tough plastics employed on ready-to-run locomotive and carriage underframes can be bonded with Plastic Magic. Curing times vary according to the materials and temperature, but we found that parts can be handled after only a few minutes, with an overnight rest (or about six hours) to

reach full strength.

The clear liquid is thin, and it's easy to carelessly apply too much - especially with small or thin plastic components that will be at risk of damage if excess solvent is used. For best results, use a fine paintbrush or a Pin Flow precision applicator tool (available separately from DM stockists) to regulate the amount of liquid applied and to get the glue exactly where it's needed.

Used carefully, a 50ml jar will last for ages, but remember to replace the lid to prevent the solvent from evaporating. Just remember to keep the open jar on part of the workbench where it's not likely to be knocked over, particularly if you have the Pin Flow applicator or brush standing in it - I speak from experience!

Plastic Magic liquid cement has now been refined and re-launched, offering improved performance, whilst the Pin Flow applicator offers precise and clean joints.

### ROKET PLASTIC GLUE

This innovative new plastic glue formula is a non-toxic, non-flammable, low-odour alternative to Plastic Magic and other mainstream poly cements and liquids. Supplied in a 30ml plastic jar, a needlepoint applicator is supplied for precision application, as well as the jar's standard nozzle. It's formulated for use on styrene, butyrate and ABS (as found in plastic kits) as well as sheet, strip, rod and tube from the ranges of Evergreen, Slater's and Plastruct.

The adhesive has a low viscosity and can be applied using either of the supplied tips or by decanting and using a small paintbrush to coat the joint faces. The parts need to be held or clamped together for a short time (about ten seconds), and once the initial 'grab' occurs the parts are bonded securely.

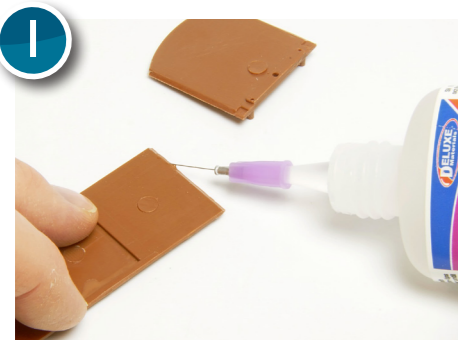
During the test, it was found that applying a small bead of

adhesive to both sides of the joint produced a quicker and stronger bond. The resultant slightly longer working time also allows for the leisurely adjustment of the parts. Depending on the material, ambient temperature and size of the joint, full curing requires about six hours, but the parts can be handled after about 20 minutes.

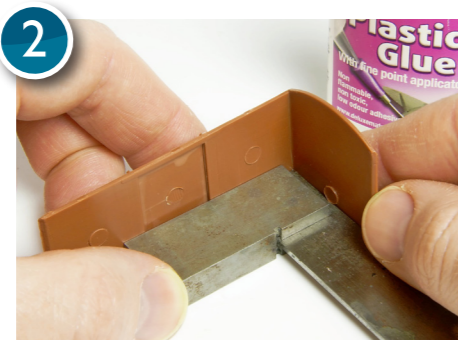
This glue is great for younger modellers, those who find the smell of strong solvents intolerable, or simply those working in spaces without adequate ventilation. The less aggressive nature also lends it well to use around painted surfaces, such as pre-painted kits or plastic detailing components supplied with RTR locomotives.

Another innovation from Deluxe is Rokat Plastic Glue, a solvent-free liquid cement that's perfect for kit-building. A pin-point needle applicator is supplied to keep your joints tidy.

## HOW TO DO IT: USING DELUXE GLUE, PUTTY AND TRACK MAGIC



1 After fettling the parts and undergoing a dry run to ensure that everything fits together cleanly, Rokat Plastic Glue is best applied with the supplied needle tip to both parts. Run a thin bead of glue along the joint faces.



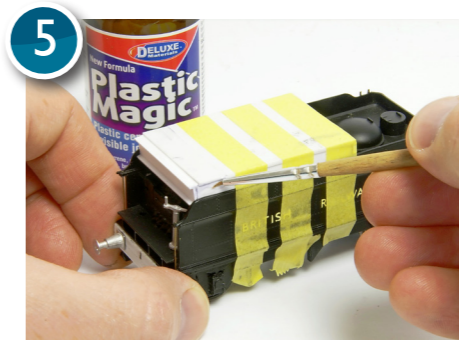
2 Gently press the two parts together, ensuring that they're correctly aligned, using a setsquare if necessary. The glue takes a few seconds to 'grab', so make any necessary adjustments and set aside to cure.



3 One benefit of the non-toxic Rokat Plastic Glue is its milder formula, making it perfect for use on and around painted surfaces, such as this Walther's pre-painted kit. Stronger glues, such as Plastic Magic, would strip the paint.



4 The new formula of Plastic Magic works quicker and more effectively than its predecessor and is best applied by fine brush or Pin Flow applicator, added sparingly into the joint while the parts are pressed together.



5 A good test of Plastic Magic's ability is to try and bond styrene to the tough plastic used on RTR models, such as this Bachmann tender. The powerful solvent formed an extremely strong bond.



6 Perfect Plastic Putty is best decanted onto a sheet of plastic or glass before applying to the model with a plastic spatula. It spreads easily and dries quickly. Build up the putty so that it's slightly above the seam.

See page 30 for a great offer on Deluxe products

An exciting medley of new products is being released this year by Deluxe Materials.

**Expert Tip**  
Avoid spills by fixing bottles to a block of wood. They'll be much harder to knock over when the lid is off.

## PERFECT PLASTIC PUTTY

This single-pack superfine filler is specially formulated for work with a variety of common plastics. The fast-drying soft white putty is easily spread and adheres well to a clean surface. Perfect for repairing small gaps, holes and blemishes, the putty also clings to painted surfaces, making it great for touching-up pre-painted models before applying the topcoats.

Once fully cured (in around an hour depending on depth of application), the putty can be filed or sanded to an ultra-smooth finish, and there seems to be very little in the way of shrinkage as it cures. Deeper cavities must be treated with a succession of thin applications, but the non-toxic formula is compatible with all types of paint.

The generous 40ml volume means that

you don't have to ration the putty's use as you might with other expensive brands, making it equally useful for small scenic tasks such as blending landscape elements, filling gaps beneath buildings or even creating platform surfaces - far less messy than using plaster-based fillers.

Excess putty can be cleaned up with water, and its safer, solvent-free nature makes it suitable for use in confined areas. Not intended for more rigorous duties such as blanking-off windows or carving and shaping, this putty is the ideal tool for tidying up joints in plastic kits or smoothing-out surfaces prior to painting. Its fast curing time and ultra-smooth finish after sanding puts it at the top of the plastic putty tree.



Perfect Plastic Putty is a non-toxic, high-performance filler. It's solvent-free so won't soften painted surfaces like others.

## RECOMMENDED READING

*Glues Supertest*, MR146 (Summer 2010)  
*Track cleaners*  
*Supertest*, MR156 (May 2011)  
*Fillers Supertest*, MR162 (November 2011)

**For**  
 Well packaged, great value and superb results. They do exactly what it says on the labels!

**Against**  
 Nothing of note.

7



Leave aside for an hour or two before sanding flush and smooth with sticks, files or wet 'n' dry paper. Using progressively finer abrasives will polish the surface to a high sheen. Check for remaining gaps and repeat if necessary.

8



Track Magic helps to keep your rails and wheels in optimum working condition. Remove heavy deposits with a track rubber and wipe the rails at regular intervals to prevent them from getting so dirty again.

9



I thought these rails were clean! Decanting a small amount of fluid into the beaker and using the supplied sponge pad makes cleaning the railheads easy. A little bit goes a long way, and the fluid evaporates in minutes.

10



Track Magic is perfectly formulated for use with mobile track cleaners, such as the Dapol motorised cleaner. Simply fill the reservoir using the pipette and fit the relevant cleaning pad to the underframe.

11



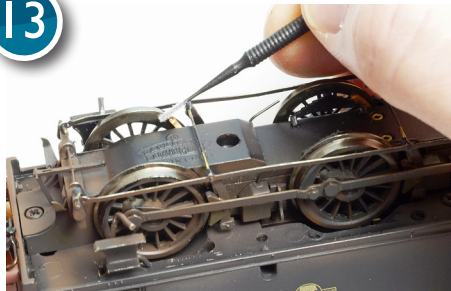
The pack also includes a handy microbrush designed for reaching between the point blades to clean power contacts and other moving parts. It's also great for cleaning the frogs and other hard-to-reach areas.

12



Cleaning locomotive and stock wheels with Track Magic also improves performance and helps keep the rails cleaner for longer. Either use the supplied microbrush or soak the bristles of a powered cleaner such as this unit from Trix.

13



The microbrush, soaked in Track Magic, will remove debris, dirt and oil deposits from the power contacts and the bearing faces of wheels and axles - an often-overlooked facet of locomotive maintenance.

## ALSO LOOK OUT FOR

Rocket Re-cap Extras consist of a pack of replacement tips and caps to suit a number of Deluxe Materials glues, including Rocket Cyano, Rocket Card and Glue 'n' Glaze. It's just the thing for those annoying moments when the glue stops flowing because you've left the lid off or forgotten to wipe the nozzle clean the last time you used it. Simply screw on the new tip and you're back in business.

