

A primitive folk chair

Using a new glue made this an easier build

BY AURALEA KRIEGER

This is a fun little chair to make for the little ones in the dollhouse. I will be using mine in a fantasy Christmas scene, but you can also make a few of these for the kiddie table in a Thanksgiving scene. Or a special one to place by the cozy fireplace or in the children's room.

You will notice I have not used wood glue here because I have compared it, as well as Super Glue, to Deluxe Materials Rokat Card Glue. I think I may have found a replacement for wood glue when working with card stock and mat board. It is as fast as Super Glue but cleans up with water and comes with a Rokat Glue tip—a fine applicator.

If you want your chair to

look heftier then make it with 2 layers of mat board. You may need to adjust some of the measurements.

1 Cut out all the patterns from mat board.

2 Use the finest sand paper you can find over all the edges. I used 3Ms P320A grit sand paper.

3 Put on the Rokat glue tip. (Clean with water after. I filled the thick part and blew the water out.)

4 Squeeze gently and run the glue along the back edge of the side piece.

5 Press the side piece against the back piece. Instantly it bonds. You can even pick up the unit instantly! It hasn't cured completely, but how amazing that you don't have to worry about it moving while it dries! I cleared the excess glue away with a scrap piece of mat board. (You can also wipe away the excess glue with a damp

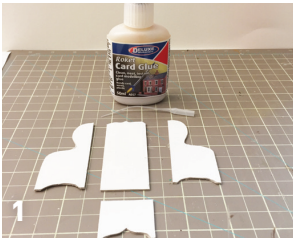
Materials:

Scale = 1:12

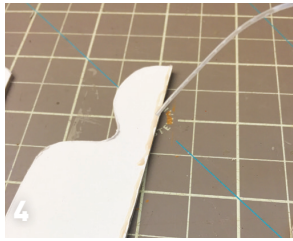
- Mat board
- Craft knife
- Fine sand paper
- Metal ruler
- Rokat Card Glue
- Paint
- Varnish
- Gold gel pen



PROJECT



1



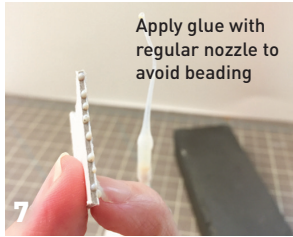
4



5

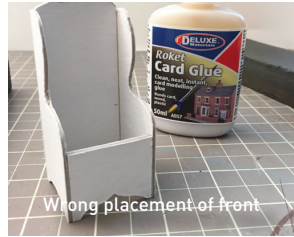


6



7

Apply glue with regular nozzle to avoid beading



Wrong placement of front



8



10

cloth, but test first on your paper product to be sure it doesn't ripple or bow.)

6 Glue on the other side and stand it up.

7 Glue on your front piece. I accidentally glued the front piece on flush forgetting that it needed it to be set back about 1/8". I was able to quickly pull it off and readjust it in the correct position with more glue. I ran a piece of mat board

over the leftover glue to flatten it out and sanded it once it was a bit more dry to cover up the mistake.

Something I didn't do, that I will do next time, is if there are small beads as the glue tip runs over a rougher surface I will run the glue tip over the small beads to spread them out. Or if you have a wider surface, apply the glue without the glue tip. Experiment to see what works best for your project. But note that less is more with this glue.

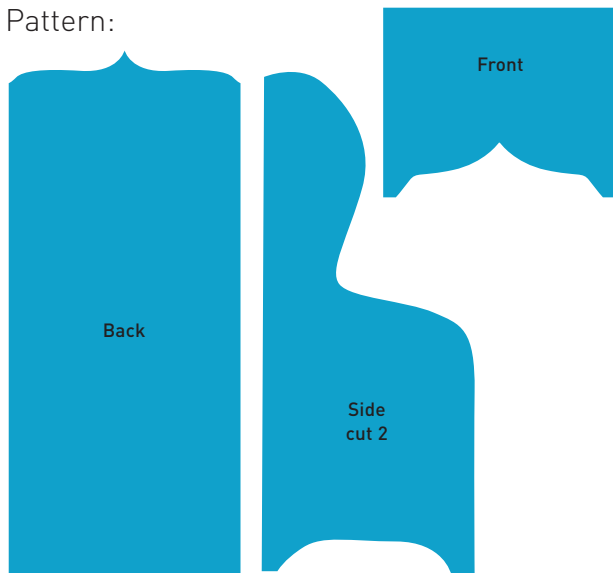
8 Measure and cut your seat width. Place it in the chair and mark it so it hangs over the front by 1/8".

9 Cut it to size and apply glue to the back of the seat piece on the top of the front piece.

10 I placed my sharpening stone as a brace and slid the piece in so it was flush and square. Immediately I can take away my brace and stand the piece up. No need to make

PROJECT

Pattern:



an inside back seat ledge like I would've had to do if using wood glue because of slippage while drying.

11 After about two minutes it is secure even when I tap it with my finger. Once completely dry it will be able to withstand pressing a small doll (or panda) onto the chair.

12 I painted my chair with a darker red/brown (2 coats) and then painted over with a bright red. This will decrease the number of bright red coats to cover a white surface.

13 Sew a little cushion for the seat using a fun

material and cotton balls. Paint yours in any style. Mine is in a fantasy scene for Christmas Pandas. They are busy getting ready for their favorite time of year!

You may prefer to stay with your faithful way of building and not stray from your usual products and building tools. I can be guilty of this myself, but we also need to remember to make time to explore new materials and methods so we can expand our creativity. The one area I am always open to growing is with new products that will save me time.

Overall I felt this glue did that for me and I spent more time being creative.

Deluxe Materials Rokat Card Glue is available in USA miniature stores and distributed by Aztec Imports. Or they can be purchased direct from: www.deluxematerialsus.com.

