



NEÄLWØLF

COLOUR

GLAZE

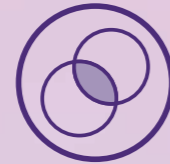
Demi-permanent liquid colour & toner

GLAZE TRUE DEMI

Neäl & Wølf GLAZE combines 21 intermixable shades with moisture locking technology. Specially designed to refresh, revive tone and enhance luminous vibrancy.



CREATIVE COLOURING



NEUTRALISES & TONES



REFRESHES COLOUR



AMMONIA FREE



LASTS 20-24 WASHES



5-20 MINUTES DEVELOPMENT



21 INTERMIXABLE SHADES



CRUELTY FREE & VEGAN FRIENDLY



LOCKS IN MOISTURE



Peachy Pink

9RV + 5G 056

LEANNE EAGLE

the_bleach_hut



Bronzed Peach

8CC

COURTNEY DENVER

courtneydenverhair



Coconut Blonde

9AV + 9GV

PRESTIGE SALON

courtneylambertxhair



Honey Biscuit

8AV + 5N + 7N

NIKITA WALTON HAIR

nikitawalton__hair

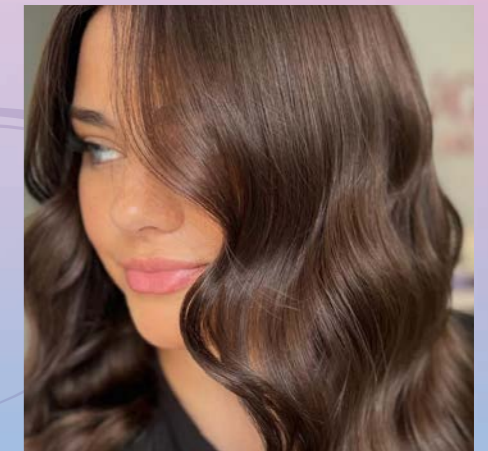


Golden Hour

9CG + 8BG + CLEAR

STEVEN AUSTIN

stevenaustinhairartist



Mocha Melt

8BG + 9CG + CLEAR. 5N + 7N

ROUGE HAIR & BEAUTY

rougesalon

Get amazing results with GLAZE



COLOUR REFRESH: GOLDEN BLONDE FORMULA

Root Melt: 40g 8BG + 10g 9GV + 10g 9CG
Gloss: 10g 9GV + 5g 9CG + CLEAR

NEÄL & WØLF GLAZE ACTIVATOR

1000ml

An innovative cream peroxide, designed to be used with all GLAZE True Demi Liquid Colour & Toners. This peroxide is formulated with Sugarcane-derived Squalene, to intensely hydrate and protect colour for longer lasting results with a high shine finish.

NEÄL & WØLF GLAZE CLEAR TONER

250ml

The final touch to in-salon services, GLAZE CLEAR Toner can be used alone with the GLAZE Activator, to enhance blow-dries and restore mirror-like shine.

Alternatively, you can add CLEAR to all GLAZE True Demi Liquid Colour & Toners to dilute the intensity.

NEÄL & WØLF GLAZE TRUE DEMI LIQUID COLOUR & TONER

75ml

Available in 21 intermixable shades for customisable results that suit all clients. This ammonia-free formula develops in as little as 5 minutes, perfect for busy stylists.


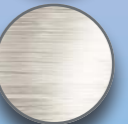


Different ways to use

- 1 **CREATIVE COLOURING**
Create and customise colour to fit each individual client.
- 2 **TONING**
Correct unwanted colours and neutralise unwanted tones.
- 3 **POST-LIGHTENING**
Keeps hair feeling stronger and healthier after in-salon lightening services.
- 4 **SUPER SHINE**
Achieve ultra glossy results time and time again.
- 5 **FAST-ACTING**
Transform hair in as little as 5 minutes with a liquid product that penetrates the hair fast.
- 6 **COLOUR REFRESHER**
Give colour-treated strands a refresh or use on first-time colour clients to enhance their natural tone.
- 7 **GLOSS SERVICE**
Use GLAZE CLEAR to dilute GLAZE True Demi Liquid Colour & Toners, or on its own to add multi-dimensional gloss to in-salon blow-dries.

Colour shades

GLAZE is available in 21 intermixable shades, designed for customisable results:

 3N 3 Natural	 5N 5 Natural	 7N 7 Natural
 9N 9 Natural	 9AA 9 Ash/Ash 9.11	 9AV 9 Ash/Violet 9.12
 9AR 9 Ash/Red 9.16	 9V 9 Violet 9.2	 8VA 8 Violet/Ash 8.21
 8VV 8 Violet/Violet 8.22	 7VR 7 Violet/Red 7.26	 9GV 9 Gold/Violet 9.32
 6G 6 Gold 6.3	 9CG 9 Copper/Gold 9.43	 8CC 8 Intense Copper 8.44
 4GM 4 Gold/Mahogany 4.35	 9RV 9 Red/Violet 9.62	 7RR 7 Intense Red 7.66
 8BG 8 Brunette/Gold 8.73	 NUDE Brunette/Gold/Ash 10.731	 CLEAR

Please note - sample swatches are based on the level relevant to the relevant base and there will be tonal differences depending on the hair it is applied to.

Application guide



SERVICE	RESULT	DEVELOPMENT TIME	MIXING RATIO
Creative Colouring	Maximum impact and full colour.	5-20 minutes, depending on the desired result and amount of neutralisation required.	Varies between 1:1.5 and 1:2, depending on the desired result and amount of neutralisation required.
Toning	Neutralise and blend unwanted tones.		
Post-lightening	Enhance tone and shine whilst locking in moisture.		
Super Shine	Achieve pure, clear gloss without compromising the base shade.		
Colour Refresher	Refresh and restore life to existing colour.		



Golden Blonde: The process



Colour processed for 15 minutes.
Remember to trust the process and don't rinse too soon, GLAZE oxidises and appears darker during the development time!

Full head of highlights using Neäl & Wølf Illumination Cream Bleach. Lifted to a level 9/10 with a natural level 6 in between.

Face Frame & Lighter Blonde Formula:
20g 9GV + 5g 9CG with equal parts CLEAR mixed 1:2 with GLAZE Activator.

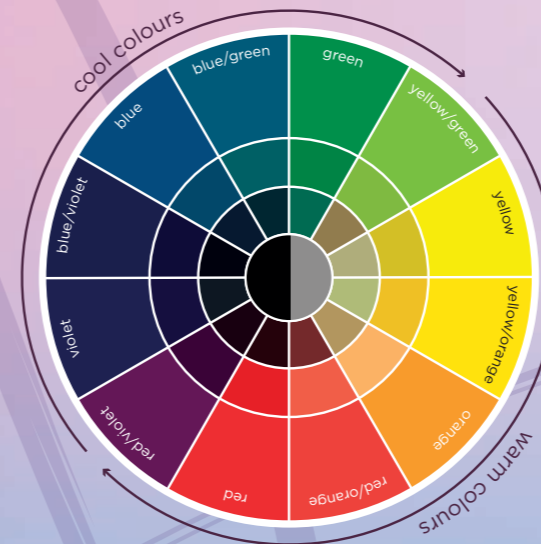
Darker Blonde Formula:
40g 8BG + 10g 9GV + 10g 9CG mixed 1:1.5 with GLAZE Activator.

Golden Blonde finished with the Neäl & Wølf styling range:

- MIRACLE Rapid Blow-dry Mist
- ENHANCE Volumising Mousse
- CONTROL Flexible Styling Hairspray

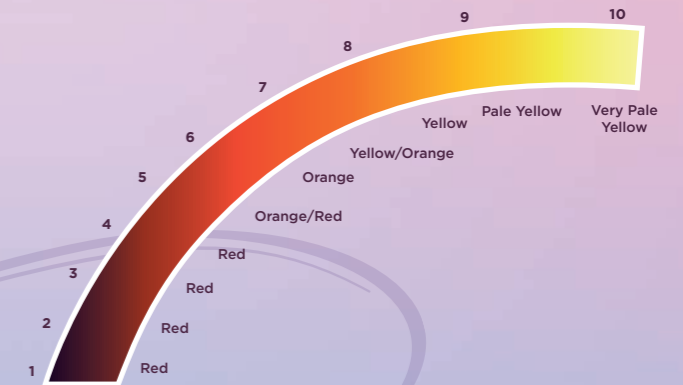
Colour wheel

Use this tool to identify what shade you need to neutralise existing and unwanted tones.



Lightening curve

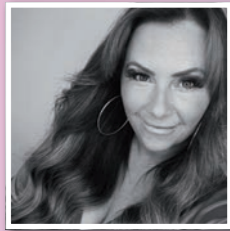
Use the Lightening Curve to understand the undertones of each level.



Meet the Education Team

When you meet our Education Team you know you're in expert hands; they live and breathe hairdressing, with a collective 100+ years of industry experience. We've also hand-picked an elite selection of exceptional guest stylists to bring you a diverse and exciting year of courses. Join us and take your skills to the next level!

TO BOOK, CONTACT US ON 01282 444 900 AND PRESS 2 FOR EDUCATION.



Laura Elliott

HEAD OF EDUCATION - LANCASHIRE

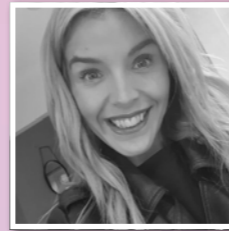
Laura joined Salon Promotions and Neäl & Wølf in 2017 with over 20 years' experience in both salons and as an educator. Laura helped create the Neäl & Wølf Colour range, Ultimate 9 and GLAZE, as well as helping to launch the Salon Promotions training academy. Over the years Laura has worked alongside hairdressing celebrities including Akin Konizi, Bruno Marc, Darren Ambrose and Josh Wood.



Chloe Whittle

EDUCATOR - LANCASHIRE & CHESHIRE

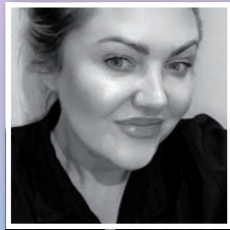
Chloe joined Salon Promotions in 2018 and has a wealth of experience including educating for Toni & Guy and also teaching stylists at an NVQ level to experienced salon owners. Chloe is one of the best we've seen when it comes to any dressing work and is very passionate about learning the fundamentals of hair preparation in order to get the most out of any style.



Lyndsey Slinger

EDUCATOR - YORKSHIRE

Lyndsey joined Salon Promotions in 2019, bringing with her over 20 years' industry experience. She has done everything from working on the salon floor to being a salon owner for 8 years, and working with Patrick Cameron. Having worked as a hair colour account manager, Lyndsey can not only talk colour but can also help you grow your business.



Kelly Hewitt

EDUCATOR - YORKSHIRE

Kelly joined Salon Promotions in 2022, bringing 25 years' experience from different sectors of the industry, from working on the salon floor to owning her own salon for over 15 years and teaching in academies. Kelly has a passion for hair and is continuously building on her skills and knowledge, having recently completed her Colour Masters with Salon Promotions. She loves being creative in colour and inspiring creativity in others.



Debra Nesbit

EDUCATOR - NORTHEAST & CUMBRIA

After completing her Colour Masters with Salon Promotions, Debra joined the Education Team in 2022. Debra has enjoyed 36 years within the industry, including 25 years as a salon owner and 10 years teaching in Further Education. Debra has a passion for vivids and all colour services. She also specialises in business development.



Katie Mason

EDUCATOR - CUMBRIA

Katie joined the Education Team in 2023 with over 20 years of experience, including owning her own salon for 14 years and completing her Colour Masters. Katie is creative and enthusiastic in all things hair. She loves to share her knowledge through teaching and helping to guide people through the world of hairdressing. She has a particular passion for sustainable beauty and specialises in all things colour.

Educator top tips

BLONDE MAINTENANCE

Clients who struggle with brassiness in-between lightening services can be offered GLAZE as a 'Blonde Refresher', this will help them feel brighter for longer. Simply mix your chosen shade with the activator at a ratio of 1:1.5 up to 1:2, apply to the hair and leave to develop for 5-20 minutes depending on the level of neutralisation required. Rinse and style as desired.

GLOSSING SERVICE

Hollywood Blow-dries are perfect for clients with hair that lacks shine, especially virgin haired clients that don't want to add colour but want to enhance their natural hair. Simply combine CLEAR and the GLAZE Activator at a ratio of 1:1.5 up to 1:2, apply to the hair and leave to develop for 5-20 minutes, rinse and style as desired.

REVERSE BALAYAGE

Head of Education Laura Elliott recommends using GLAZE for reverse Balayage services. Here's what she said "They give me a seamless blend and finish, I find them incredibly easy to use".

PRE-PIGMENTING

During the lightening process of hair the pigments are stripped out - this is what leaves a beautiful, pale blonde shade. When we take blondes back dark, it is crucial that the hair is pre-pigged before your desired colour is applied over the top, without this the hair can turn out with hues of green or look flat and dull. For rich colour full of vibrancy, we

recommend pre-pigmenting with a warm base such as 9CG Copper/Gold.

BRICKWORK TECHNIQUE

Head of Education Laura Elliott's favourite sectioning technique to use with GLAZE is the 'Brickwork Formation'. Laura does this by working ear to ear starting from the back and working towards the front of the head, applying this way gives the most even coverage possible and with the hair at the back of the head typically being thicker, it ensures the colour is processing longer and more evenly in that section - for better coverage all around.

GREY COVERAGE

Chloe Whittle from our Education Team explains why she loves using GLAZE to blend Grey hair 'I am a big fan of working with GLAZE for grey coverage, I find it's often easier to remove, provides a softer demarcation line, reduces the chance of colour fading warm and last but not least it's super quick!'

Did you know, you can achieve up to an 80% blend on grey hair with GLAZE?



Scan to see courses available



FAQ

CAN I APPLY GLAZE TRUE DEMI TONER TO DRY HAIR?

Yes. But because dry hair is more porous, this may result in a more intense colour.

CAN I APPLY GLAZE TRUE DEMI TONER WHILST THE PERMANENT ROOT COLOUR IS STILL DEVELOPING?

Yes. Simply spray the mid-lengths and ends with water, apply GLAZE and process for the desired time.

WHEN DO I CLEANSE THE HAIR?

We recommend cleansing the hair prior to application and applying to damp/towel-dried hair, this can help with evening out the hairs porosity.

CAN I USE CONDITIONER AFTER I REMOVE GLAZE TRUE DEMI TONER?

Yes. If you feel the hair needs an extra boost of hydration.

CAN GLAZE TRUE DEMI TONER BE USED ALONGSIDE ANY OTHER PEROXIDE?

For optimum results, we recommend using GLAZE Activator alongside GLAZE True Demi Toner, as this contains specially blended ingredients to enhance shine and maximise the performance of our product.

CAN I COMBINE GLAZE SHADES WITH MIX-TONES FROM THE PERMANENT EXTRAORDINARY COLOUR RANGE?

Yes! These can be added to intensify and enhance tone using the following ratios:

DEPTH/ SHADE	AMOUNT OF CORRECTOR	DEPTH/ SHADE	AMOUNT OF CORRECTOR
10	0.5g	5	3g
9	1g	4	3.5g
8	1.5g	3	4g
7	2g	2	4.5g
6	2.5g	1	5g

CAN I CREATE LEVEL 10 TONERS FROM THE LEVEL 9 TONERS WITHIN THE RANGE?

Yes! To create a level 10 toner, combine your chosen shade with CLEAR to dilute and soften the results.



Join the revolution

If you are already part of the Neäl & Wølf colour revolution and wish to place an order, just contact your local business development manager or call us on 01282 444 900.

If you would like more information about our products or wish to join us, please email info@nealandwolf.com.



Scan to download the Glaze Technical Brochure



NEÄL WOLF®

*Colouring with confidence
starts here...*

SHARE YOUR GLAZE RESULTS WITH US ON SOCIALS

#amazewithglaze
#nealandwolfcolour

