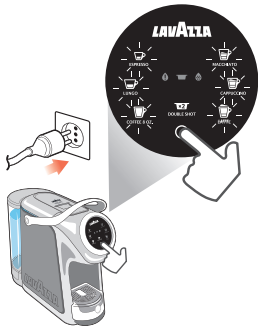


QUICK START GUIDE

COFFEE PREPARATIONS - Machine without glass vessel inserted



- 1 Make sure machine is plugged in prior to use and fill water tank. Press the ON/OFF button to turn on the machine. The button's lights will blink during warm up. Machine is ready once lights stop blinking.



ESPRESSO
or **LUNGO**.



DOUBLE SHOT*

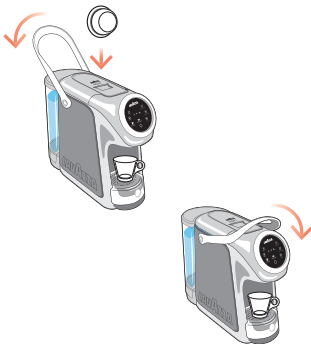
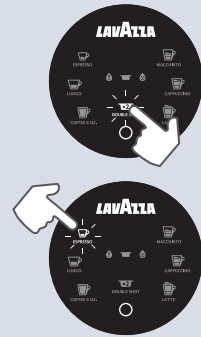


COFFEE 8 OZ.

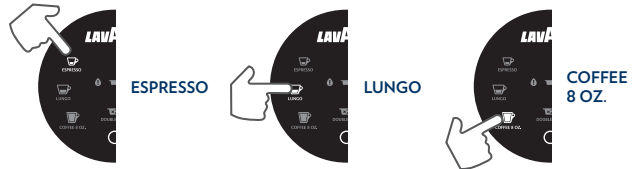
- 2 Insert the capsule according with the desired beverage.

*OPTIONAL FOR DOUBLE SHOT

DOUBLE SHOT is available on Espresso selection, pressing the Double Shot button, before the Espresso button and inserting the specific capsule labeled "Espresso2".



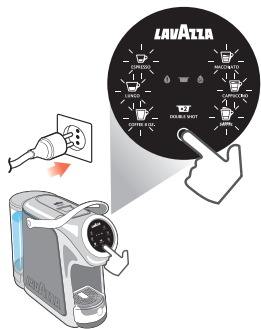
- 3 Raise the chrome lever, insert the capsule and lower the chrome lever.



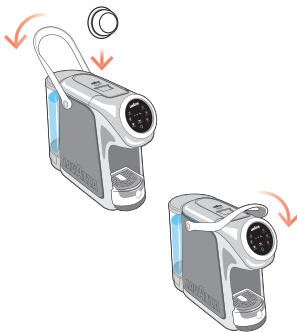
- 4 Press the ESPRESSO, LUNGO or COFFEE 8 OZ button to brew the desired coffee, brewing will stop automatically once the preset dose is reached, pressing a button again while brewing will stop the brewing process.

QUICK START GUIDE

MILK BASED RECIPE PREPARATIONS - Machine with glass vessel inserted



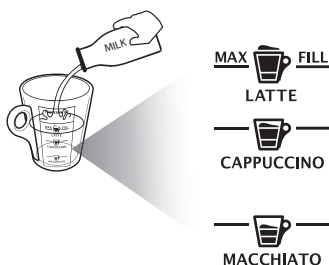
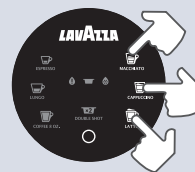
- 1 Make sure machine is plugged in prior to use and fill water tank. Press the ON/OFF button to turn on the machine. The button's lights will blink during warm up. Machine is ready once lights stop blinking.



- 2 Raise the chrome lever, insert the Espresso or Espresso2* capsules (to brew an Espresso Double Shot in the Milk recipe) and lower the chrome lever.

*OPTIONAL FOR DOUBLE SHOT

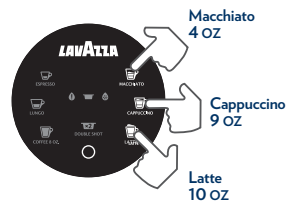
DOUBLE SHOT is available on all milk beverage selections, pressing the Double Shot button before the milk button recipe desired and inserting the specific capsule labeled "Espresso2".



- 3 Fill the appropriate amount of milk for the desired recipe, MACCHIATO, CAPPUCCINO or LATTE, in the glass vessel.



- 4 Cover the glass vessel with its cap and place it in the appropriate space.



- 5 Select desired beverage by pressing button. Machine will prepare beverage automatically, frothing the milk and brewing the coffee. Do not remove until brewing is complete (machine will beep).